

BART POLICE DEPARTMENT



May 2018

MONTHLY REPORT

BPD Monthly Reports

May 2018

Report	Responsible
01 – Industrial Leave*	SSD – J. Morgan
02 – Vacancy	SSD – F. Cheung
03 – Diversity	SSD – F. Cheung
04 – Training	PS&T – P. Kwon
05 – Use of Force	PS&T – K. Franklin
06 – Citizen Complaints	PS&T – K. Franklin
07 – Internal Affairs Log	PS&T – K. Franklin
08 – Performance Measures	SSD – K. Dam
09 – Enforcement Contacts	SSD – K. Dam
10 – Parking Enforcement	POD – J. DeVera
11 – Warrant Arrests	SSD – K. Dam
12 – Detectives Assignments	SSD – J. Power
13 – Detectives Closure Rate	SSD – J. Power
14 – Assembly Bill 716	POD – M. Williamson
15 – Absence Overview	SSD – C. Vogan
16 – Overtime	SSD – F. Cheung
17 – Communications Center	SSD – G. Hesson
18 – BART Watch	SSD – C. Vogan

*Not included in Year-End or Monthly BPCRB Reports

BART Police Department (07) Staffing Status

As of: 06/11/18
Vacancy Factor: 0.0

	Pos'n Code	Job Title	FY18 Adopted	Reclass	As of 06/11/18	Filled	On Leave or TMD	Vacant
NON-SWORN (Rep)	027	Community Service Officer	63		63	46	5	17
	045	Police Admin Specialist	12		12	10	-	2
	048	Police Dispatcher	16		16	15	1	1
	098	Revenue Protection Guard	19		19	16	1	3
	836	Police Sup./CAD/RMS Admin**	6		6	6	-	-
SWORN	778	Police Officer	63		63	60	6	3
		In Academy = 6						-
		Field Training = 2						-
	788	Senior Police Officer	104		104	82	5	22
	798	Master Police Officer	14		14	10	-	4
	838	Police Sergeant	34		34	29	4	5
	888	Police Lieutenant	10		10	10	1	-
	898	Police Deputy Chief	3		3	3		-
	980	Police Chief	1		1	1		-
Non-Sworn (Non-Rep)	SF100	Mgr of Security Programs**	1		1	-		1
	000065	Emergency Preparedness Mgr.	1		1	1	-	-
	000074	Crisis Outreach Coordinator	1		1	1		-
	000081	Accreditation Manager	1		1	1	-	-
	AF200	Sr. Administrative Analyst	1		1	1		-
DEPARTMENT TOTAL			350	-	350	292	23	58

Notes

Add people on TMD to the filled position

EBART - Ofc 5, CSO 4

Fare Evasion - 6 CSOs, 1 PAS

Note: BART Police Department has 17 Attrition Float positions, of which 10 are Police Officers (778), 5 are Community Service Officers (027) and 2 are Police Dispatchers (048).

- > "On Leave" category does not include personnel on Admin Leave.
- > Mgr of Security Programs position is currently filled by a Police Lieutenant**

BART PD DIVERSITY MONTHLY REPORT

As of 6/11/18

+

<u>ETHNICITY</u>		<u>S</u>		<u>C</u>	
White	37% 107	43%	77	31%	30
Black	21% 62	21%	40	23%	22
Asian	21% 62	16%	33	30%	29
Hispanic	19% 56	18%	42	14%	14
American/ Indian	0% 0	0%	0	0%	0
Native Hawaiian/Pac Island	1% 5	2%	3	2%	2
Total:	100% 292	100%	195	100%	97
<u>DEMOGRAPHIC</u>		<u>S</u>		<u>C</u>	
Female	22% 63	10%	20	46%	45
Male	78% 227	90%	175	54%	52
Total:	100% 290	100%	195	100%	97
<u>CLASSIFICATION</u>					
Sworn	67% 195				
Civilian	33% 97				
Total:	100% 292				

CRISIS INTERVENTION TRAINING AS OF: June 1, 2018

Personnel Positions	Total Positions	Filled Positions	Vacant Positions	(Not in Academy or Field Training) Eligible to Attend Training	Total of Filled Positions Trained	Percentage of Total Filled Positions Trained	Percentage of Eligible Filled Positions Trained
Chief	1	1	0	1	0	0%	0%
Deputy Chiefs	3	3	0	3	3	100%	100%
Lieutenants	10	9	1	9	9	100%	100%
Sergeants	34	28	6	28	28	100%	100%
Officers	181	148	33	136	135	91%	99%
Dispatchers	16	15	1	12	12	80%	100%
Dispatch Supervisors	2	2	0	2	2	100%	100%
CSOs	63	45	18	44	44	98%	100%
Crisis Outreach Coordinator	1	1	0	1	1	100%	100%
Total	311	252	59	236	234	93%	99%

Personnel Positions that are not designated to attend CIT Training

	Total	Filled	Vacant
Revenue Protection Guards	19	16	3
Police Administrative Specialists	12	10	2
Police Sup./CAD RMS Admin	4	4	0
Civilian Managers/Analyst	3	3	0
Sub Total	38	33	5
TOTAL PERSONNEL	349	285	64

FAIR AND IMPARTIAL / BIASED BASED TRAINING AS OF June 1, 2018

Personnel Positions	Total Positions	Filled Positions	Vacant Positions	Eligible to Attend (Not in Academy or Field Training)	Total of Filled Positions Trained	Percentage of Total Filled Positions Trained	Percentage of Eligible Filled Positions
Chief	1	1	0	1	0	0.0%	0.0%
Deputy Chiefs	3	3	0	3	3	100.0%	100.0%
Lieutenants	10	9	1	9	9	100.0%	100.0%
Sergeants	34	28	6	28	28	100.0%	100.0%
Officers	181	148	33	142	142	95.9%	100.0%
CSOs	63	45	18	43	40	88.9%	93.0%
Total	292	234	58	226	222	94.9%	98.2%

Personnel Positions that are not designated to attend FAIR AND IMPARTIAL Training

	Total	Filled	Vacant
Dispatchers	16	15	1
Dispatch Supervisors	2	2	0
Crisis Outreach Coordinator	1	1	0
Revenue Protection Guards	19	16	3
Police Administrative Specialists	12	10	2
Police Sup./CAD RMS Admin	4	4	0
Civilian Managers/Analyst	3	3	0
Sub Total	57	51	6
TOTAL PERSONNEL	349	285	64

POLICE ROADWAY PROTECTION TRAINING AS OF: June 1, 2018

Personnel Positions	Total Positions	Filled Positions	Vacant Positions	Eligible to Attend (Not in Academy, FTO, or IND/Leave)	Total of Filled Positions Trained	Percentage of Total Filled Positions Trained	Percentage of Eligible Filled Positions
Chief	1	1	0	1	0	0.0%	0.0%
Deputy Chiefs	3	3	0	3	3	100.0%	100.0%
Lieutenants	10	9	1	9	9	100.0%	100.0%
Sergeants	34	28	6	28	28	100%	100.0%
Officers	181	148	33	143	143	96.6%	100.0%
CSOs-Not Required	63	45	18	43	40	88.9%	93.0%
Total	292	234	58	227	223	95.3%	98.2%

Personnel Positions that are not REQUIRED to attend Police Roadway Protection Training

	Total	Filled	Vacant
CSOs	63	45	18
Dispatchers	16	15	1
Dispatch Supervisors	2	2	0
Crisis Outreach Coordinator	1	1	0
Revenue Protection Guards	19	16	3
Police Administrative Specialists	12	10	2
Police Sup./CAD RMS Admin	4	4	0
Civilian Managers/Analyst	3	3	0
Sub Total	120	96	24
TOTAL PERSONNEL	412	330	82

Use of Force Incidents - 2018

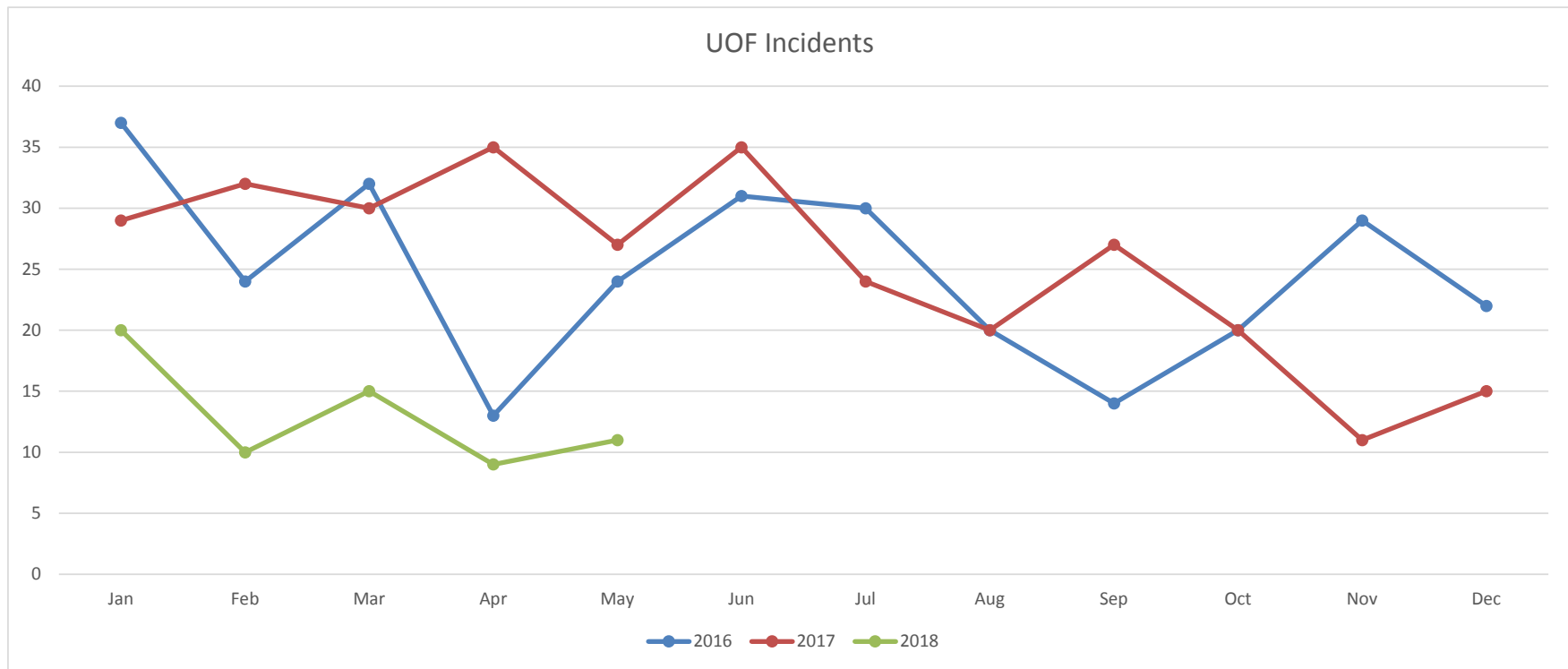
	Jan	Feb	Mar	Apr	May	Jun	Jul	Aug	Sep	Oct	Nov	Dec	Total
2018	20	10	15	9	11								65
YTD 2018	20	30	45	54	65								

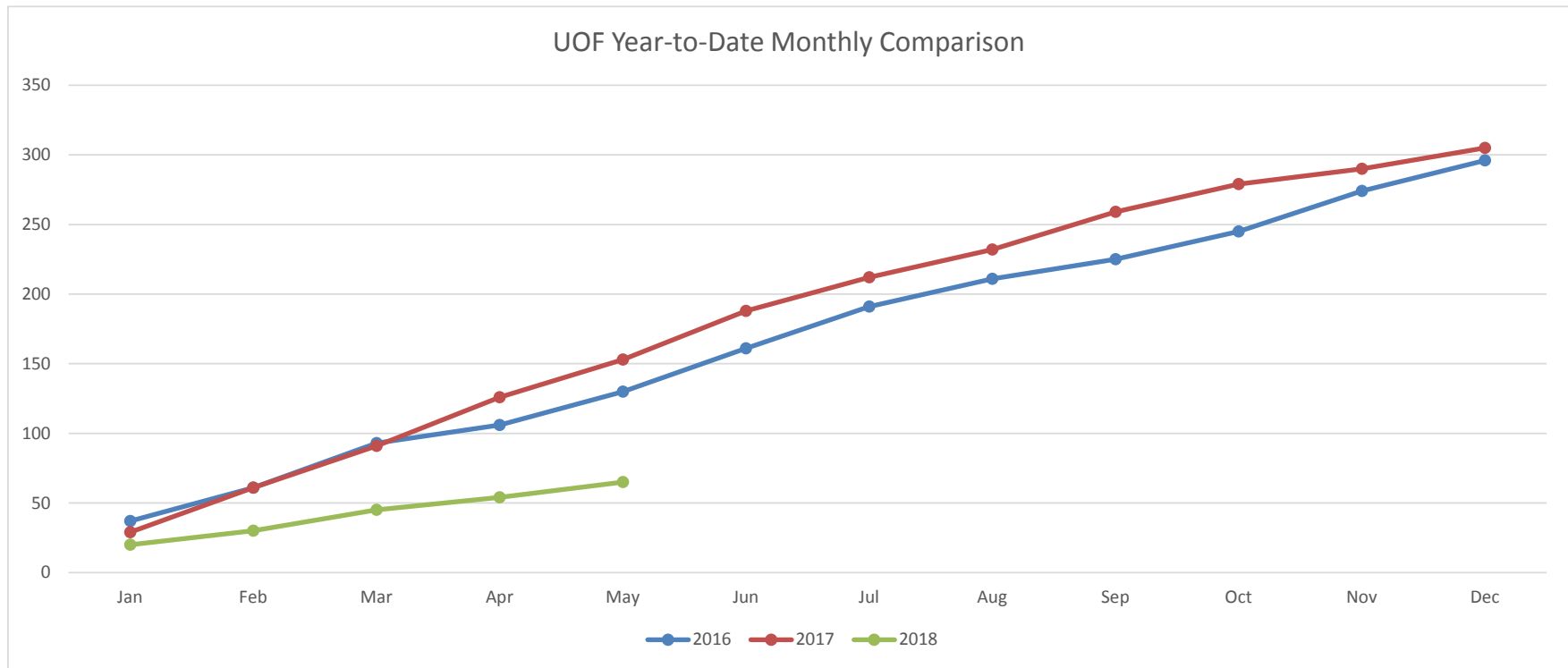
Use of Force Incidents - 2017

	Jan	Feb	Mar	Apr	May	Jun	Jul	Aug	Sep	Oct	Nov	Dec	Total
2017	29	32	30	35	27	35	24	20	27	20	11	15	305
YTD 2017	29	61	91	126	153	188	212	232	259	279	290	305	

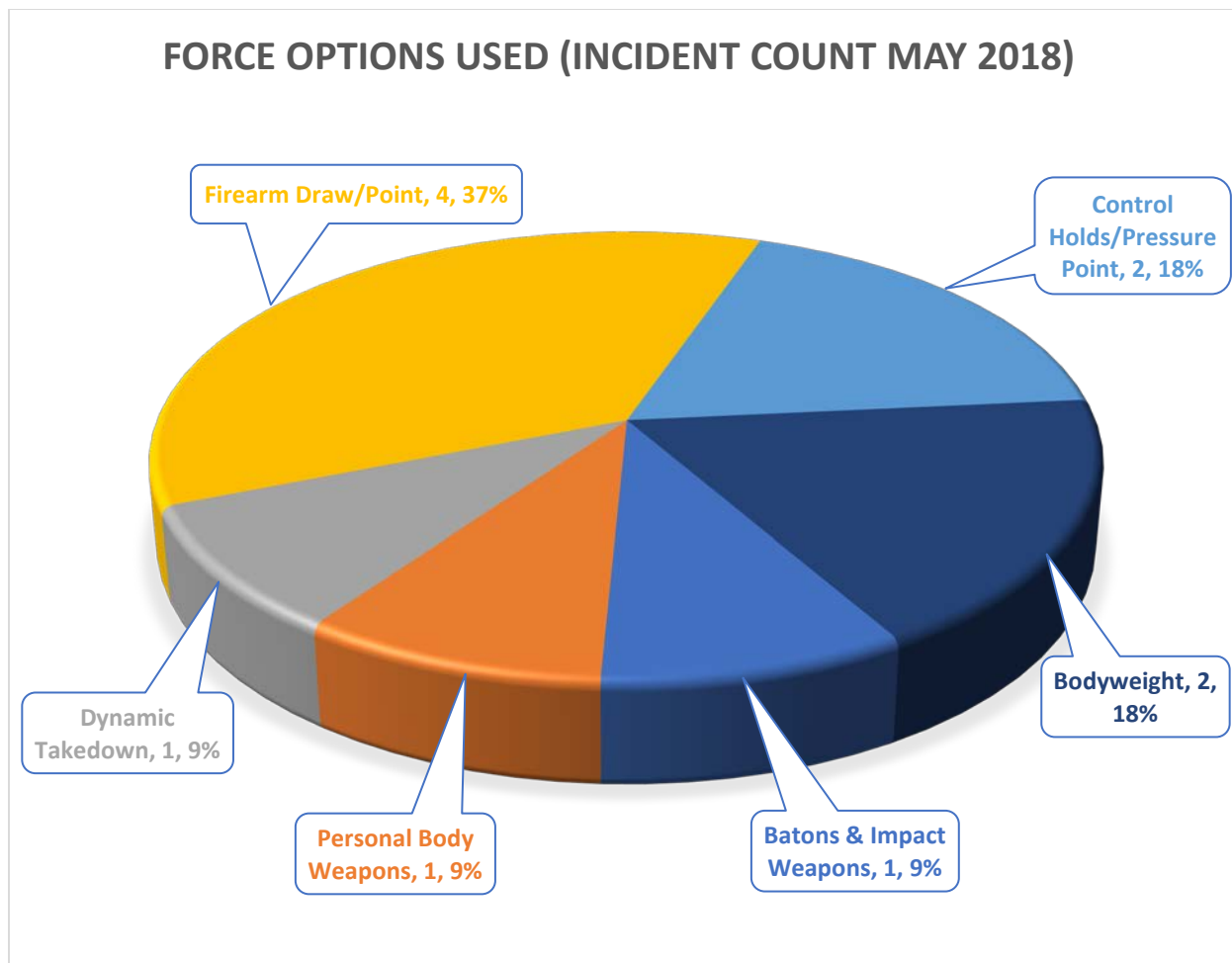
Use of Force Incidents - 2016

	Jan	Feb	Mar	Apr	May	Jun	Jul	Aug	Sep	Oct	Nov	Dec	Total
2016	37	24	32	13	24	31	30	20	14	20	29	22	296
YTD 2016	37	61	93	106	130	161	191	211	225	245	274	296	



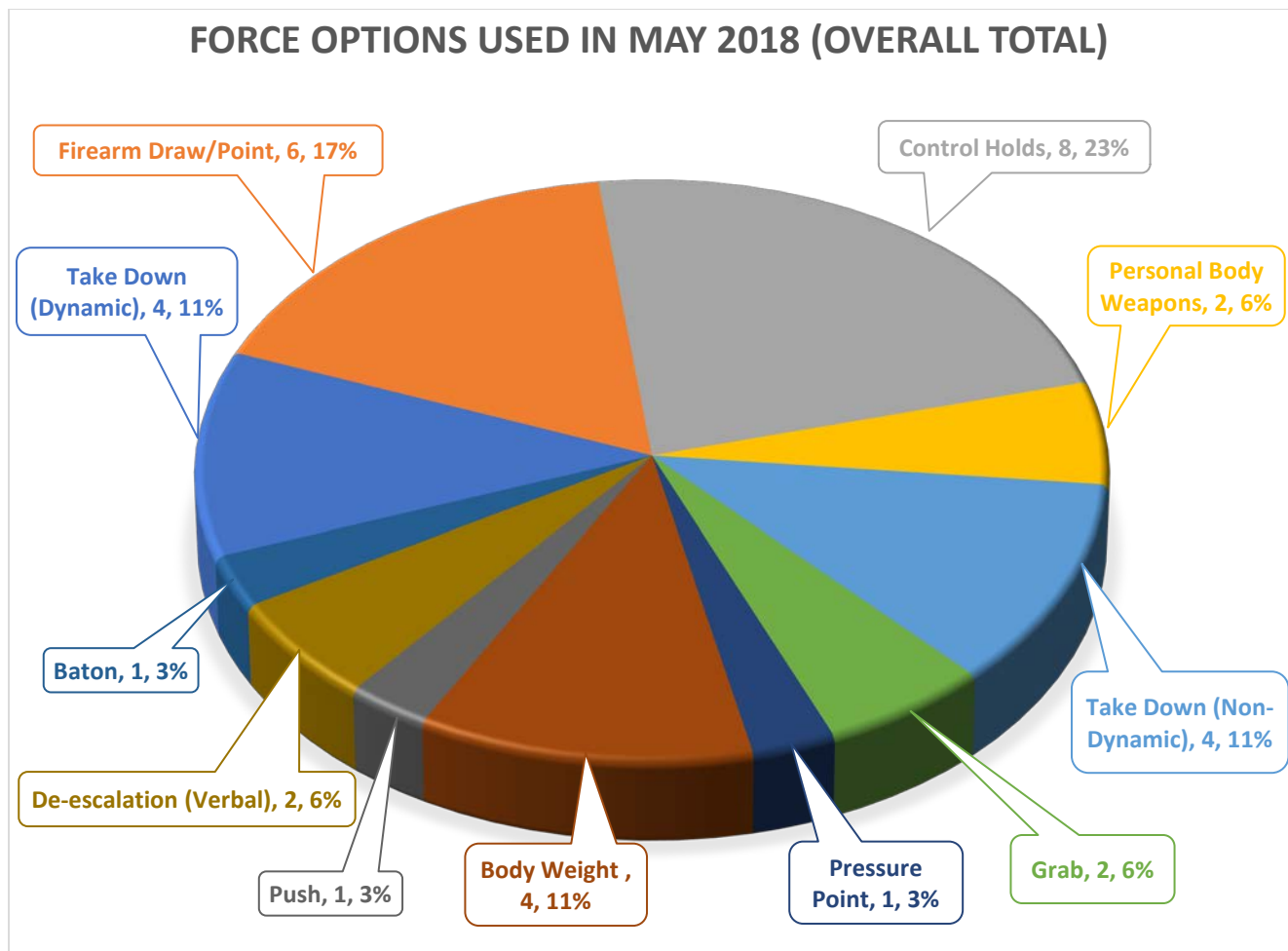


Force Options Used (Incident Count), May 2018



*Each incident could contain more than one force option used. This pie chart reflects the most significant force option used per incident.

Types of Force Used, May 2018 (Overall Total)



0

*Some incidents involved the use of multiple force options. If two officers involved in the same incident used the same force option, this data would reflect both officers. As an example, if two officers in the same incident used control holds, this data would reflect two separate control holds.

Citizen Complaints - 2018

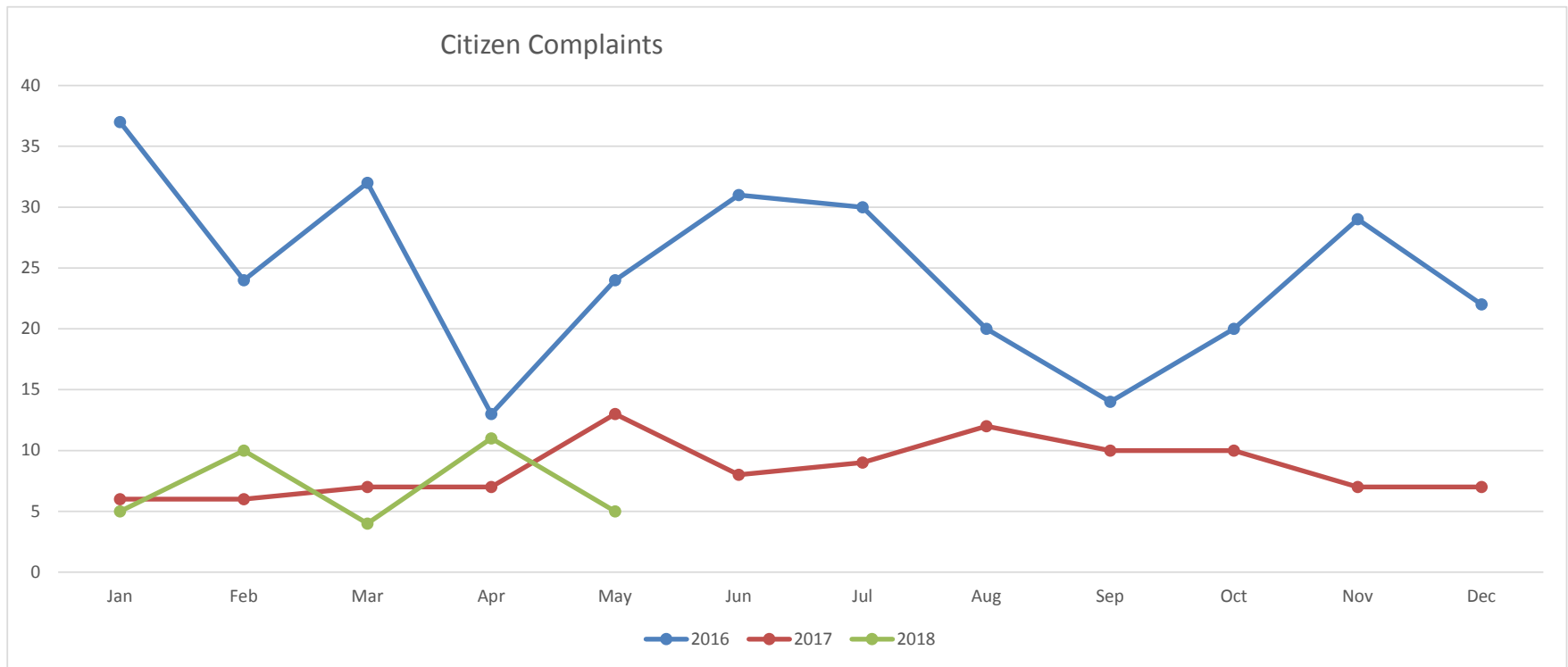
	Jan	Feb	Mar	Apr	May	Jun	Jul	Aug	Sep	Oct	Nov	Dec	Total
2018	5	10	4	11	5								35
YTD 2018	5	15	19	30	35								

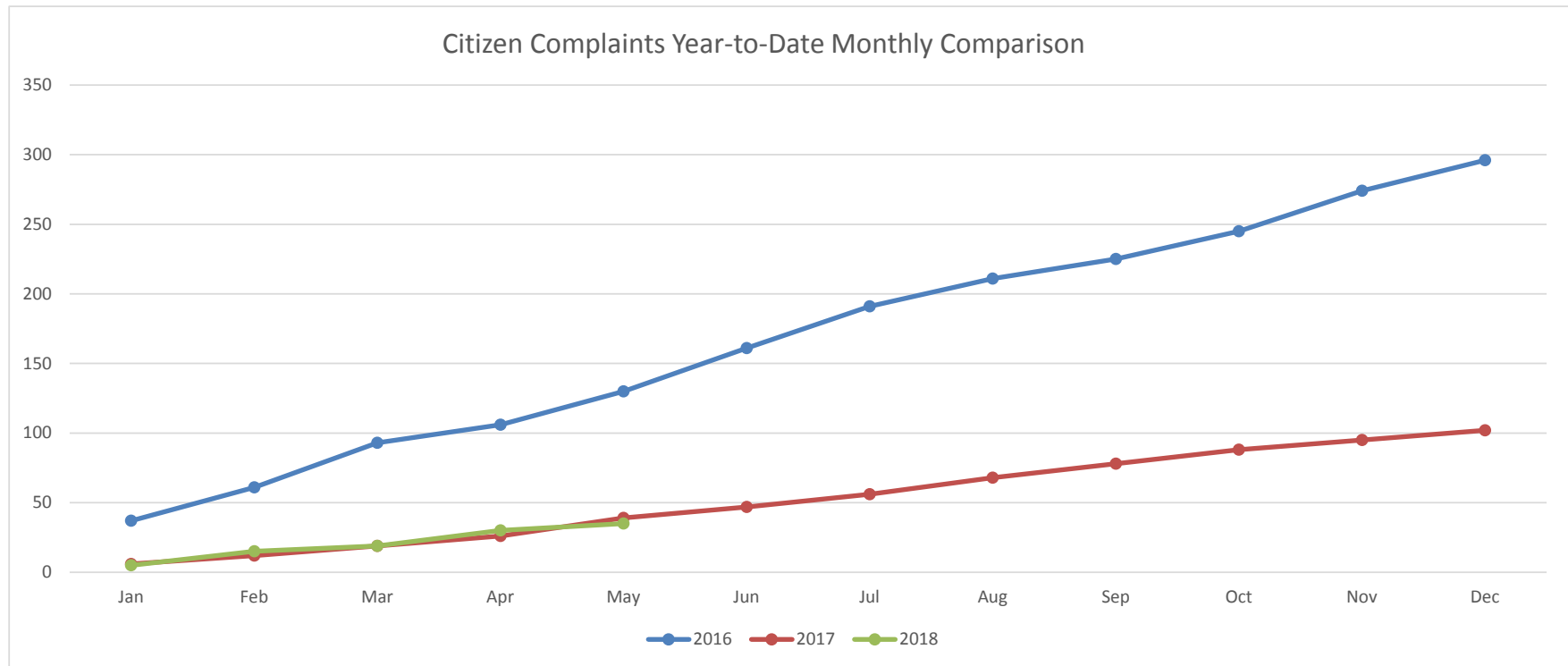
Citizen Complaints - 2017

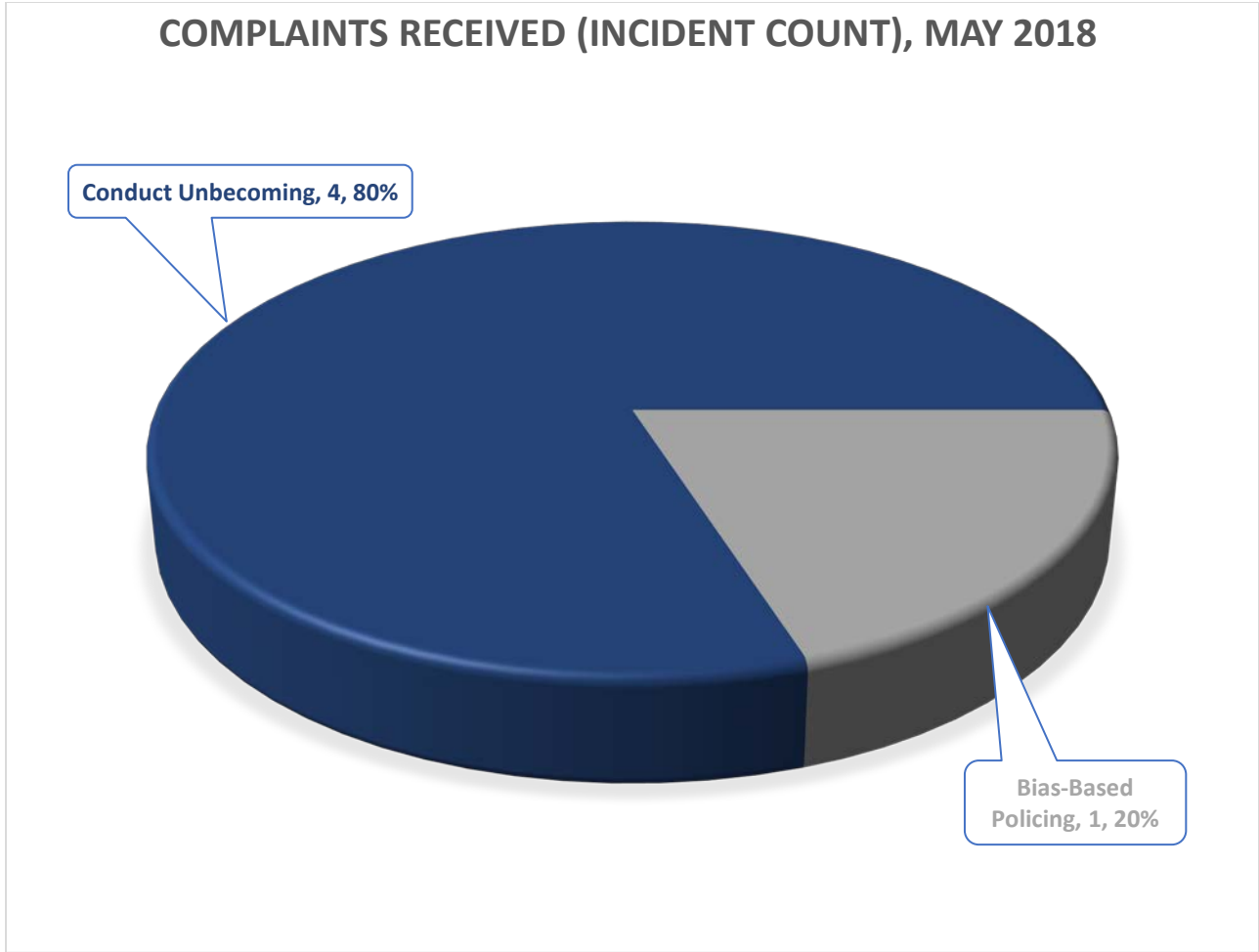
	Jan	Feb	Mar	Apr	May	Jun	Jul	Aug	Sep	Oct	Nov	Dec	Total
2017	6	6	7	7	13	8	9	12	10	10	7	7	102
YTD 2017	6	12	19	26	39	47	56	68	78	88	95	102	

Citizen Complaints - 2016

	Jan	Feb	Mar	Apr	May	Jun	Jul	Aug	Sep	Oct	Nov	Dec	Total
2016	10	3	13	7	7	10	6	9	8	7	8	6	94
YTD 2016	10	13	26	33	40	50	56	65	73	80	88	94	







Each incident could contain more than one allegation. This pie chart reflects the most significant allegation per incident.

BART Police Department - Office of Internal Affairs							
Investigation Log - May 2018							
IA	DATE		ALLEGATION	FINDING	INVESTIGATOR	DUE DATE	COMPLETED DATE
CASE #	OCC'D	REC'D					
IA2016-071	07/29/16	7/29/2016	Force, Bias, Arrest		Lt. Kwon	12/28/16	
			Force, Bias, Arrest		(Tolled)	01/27/17	
			Force, Bias, Arrest				
			Force, Bias, Arrest				
IA2017-040	1/31/2017	5/18/2017	Force		Sgt. Togonon	10/17/2017	
			Force		Tolled		
IA2017-081	8/31/2017	8/31/2017	CUBO		Sgt. T. Salas	1/30/2018	Submitted L21
			CUBO				
			CUBO				
IA2017-093	10/4/2017	10/4/2017	Force	Admin	Sgt. T. Salas	3/5/2018	Submitted L21
IA2017-095	10/13/2017	10/18/2017	Performance of duty		Sgt. T. Salas	4/10/2018	
			Force/Search				
IA2017-096	10/20/2017	10/23/2017	Bias Based Policing		Sgt. T. Salas	3/24/2018	
					Sgt. Fueng		
IA2017-097	10/13/2017	10/18/2017	CUBO	Deferred to OIPA #17-39	Sgt. Togonon	3/19/2018	
			Bias-Based Policing				
IA2017-101	10/30/2017	10/31/2017	Performance of Duty		Sgt. T. Salas	3/22/2018	Submitted L21
IA2017-105	11/15/2017	11/16/2017	Performance of Duty		T. Salas	5/8/2018	
			Bias-Based Policing				
			Policy (Axon)				
IA2017-110	11/28/2017	11/28/2017	Policy/Procedure	Service Review	Lt. Kwon		
IA2017-111	11/10/2017	11/10/2017	Force		Sgt. Salas	5/1/2018	
IA2017-114	12/12/2017	12/13/2017	Force, Bias, CUBO		Sgt. T. Salas	5/14/2018	
IA2017-115	12/20/2017	Unk	Force, CUBO		Sgt. McNack	5/21/2018	
			Policy/Procedure				
IA2017-117	12/17/2017	12/28/2017	Performance		Sgt. Togonon	5/29/2018	
			Arrest/ Detention				
IA2017-118	12/25/2017	1/2/2018	Force		Sgt. T. Salas	6/3/2018	
IA2018-001	1/3/2018	1/3/2018	Force (OIS)		Sgt. T. Salas	6/4/2018	
					Tolled		
IA2018-003	1/28/2018	1/8/2018	CUBO		Sgt. T. Salas	7/8/2018	
IA2018-005	1/12/2018	1/12/2018	Bias/CUBO		Sgt. McNack	6/13/2018	
IA2018-007	1/26/2018	1/26/2018	Force	Admin Closure	Sgt. McNack	7/4/2018	
IA2018-009	2/1/2018	2/8/2018	Bias		Sgt. McNack	7/10/2018	
IA2018-010	2/1 2/2 2018	2/12/2018	CUBO		Sgt. Togonon	7/14/2018	
			CUBO				
IA2018-011	2/12/2018	2/13/2018	Arrest/Detention, Force, Bias, CUBO	Deferred to OIPA #18-03	Sgt. T. Salas	7/16/2018	
IA2018-013	2/7/2018	2/10/2018	Force/Policy/Procedure		Sgt. McNack	7/22/2018	
			Policy/Procedure				
IA2018-015	2/18/2018	2/20/2018	Performance of Duty, CUBO		Sgt. T. Salas	7/22/2018	

PART 1 CRIMES	2013	2014	2015	2016	2017	YTD May		% change from '17
						2017	2018	
Homicide	1	0	1	1	0	0	0	#DIV/0!
Rape	0	2	3	4	8	7	2	-71%
Robbery	209	153	161	232	290	132	110	-17%
Aggravated Assault	57	71	73	93	121	44	58	32%
Violent Crime Subtotal	239	199	200	279	347	183	170	-7%
Burglary (Not Including Auto)	25	7	4	12	15	3	9	200%
Larceny	2524	2597	2325	2217	2593	991	1011	2%
Auto Theft	483	522	480	480	420	182	173	-5%
Arson	0	0	0	1	4	1	3	200%
Property Crime Subtotal	3032	3126	2809	2710	3032	1177	1196	2%
TOTAL	3271	3325	3009	2989	3372	1360	1366	0%

#DIV/0 - Not Calculable *Aggravated Assault table updated to conform to UCR totals *



BART Police Performance Measurements

May 2018

Disclaimer--**The data is drawn from the BART Police Department TriTech computer database, and they are unaudited. The numbers may not match the official monthly totals reported to the FBI through the Uniform Crime Reporting (UCR) program. Late reporting, the reclassification or unfounding of crimes, can affect crime statistics. The statistics contained in the on the Performance Measurements are **subject to change, updates, and corrections. ****

Top 5 Stations For Part 1 Crimes

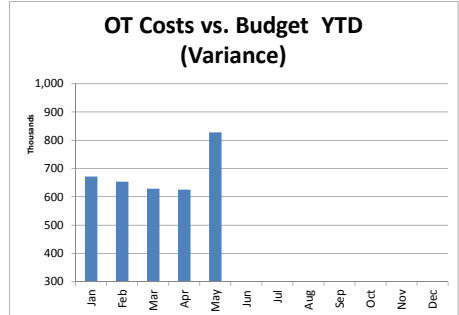
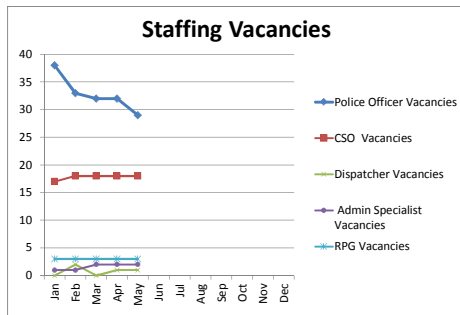
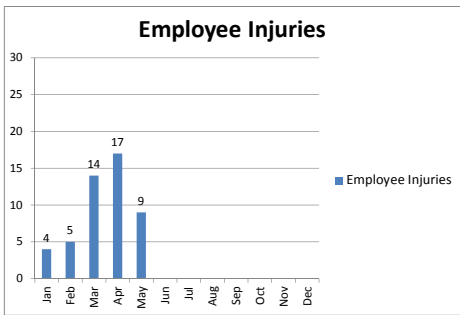
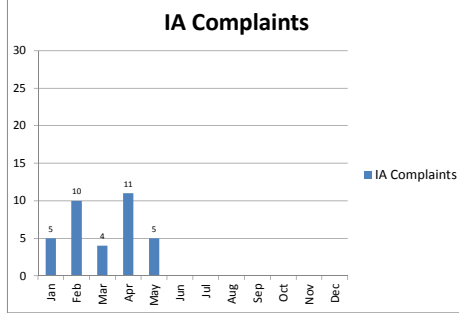
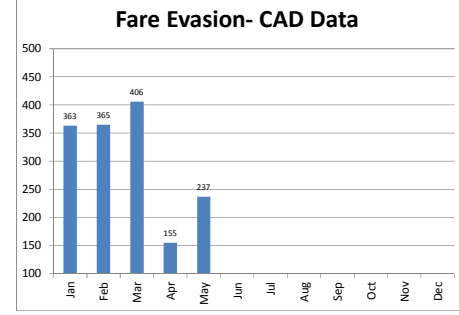
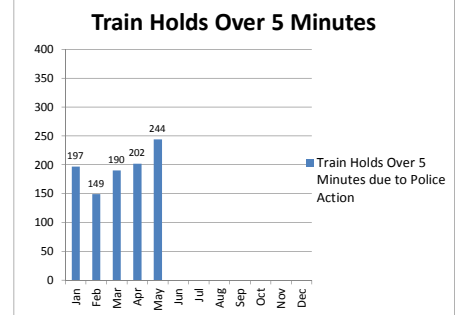
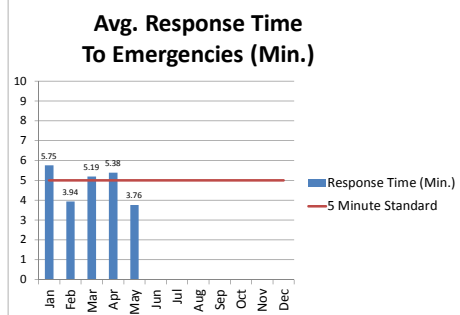
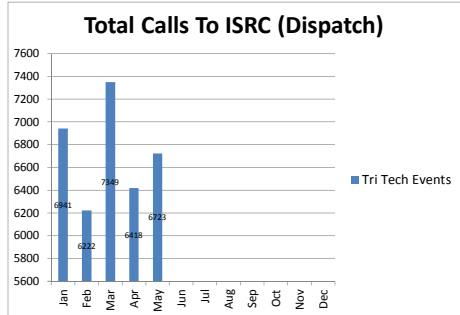
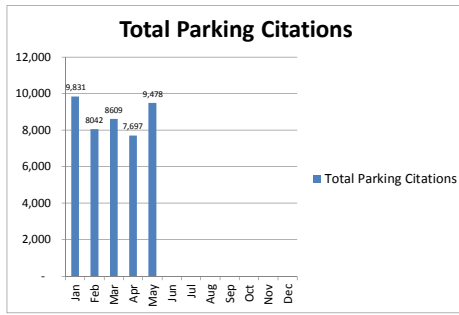
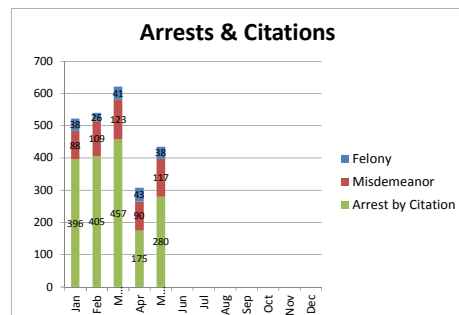
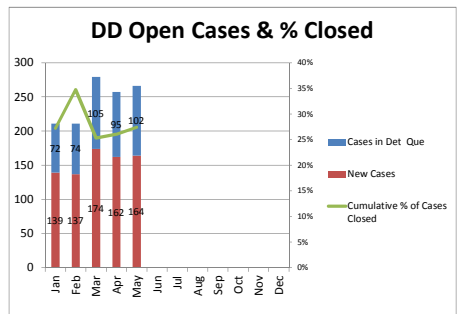
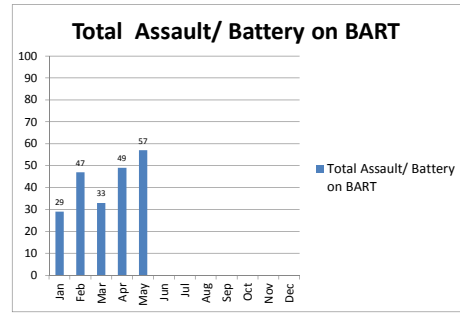
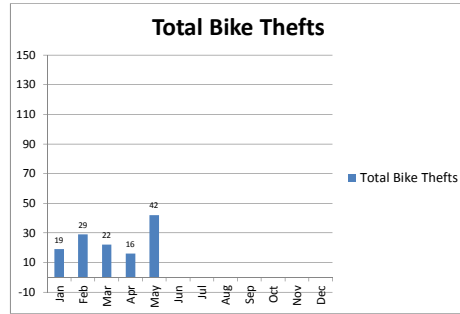
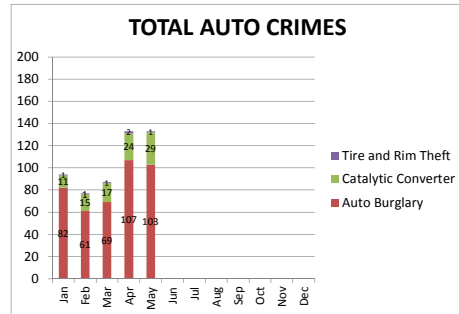
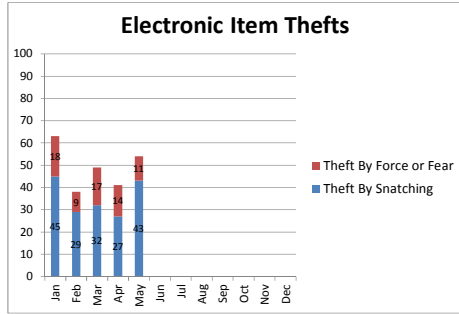
Most Frequent 2017
2018 Current Month

Most Frequent all of 2017
2017 YEAR

Richmond
MacArthur
Coliseum
San Leandro
West Oakland

Coliseum
Bay Fair
West Oakland
Fruitvale
East Dublin

This list was obtained by adding the highest totals listed in the Part 1 crimes data.



Enforcement Contacts - 2018

	Jan	Feb	Mar	Apr	May	Jun	Jul	Aug	Sep	Oct	Nov	Dec	YTD
Felony Arrest	38	26	41	43	38								186
YTD 2018	38	64	105	148	186								
Misd. Arrest	88	109	123	90	117								527
YTD 2018	88	197	320	410	527								
Cite & Release	396	405	457	175	280								1,713
YTD 2018	396	801	1,258	1,433	1,713								
Field Interview	512	581	581	476	527								2,677
YTD 2018	512	1,093	1,674	2,150	2,677								

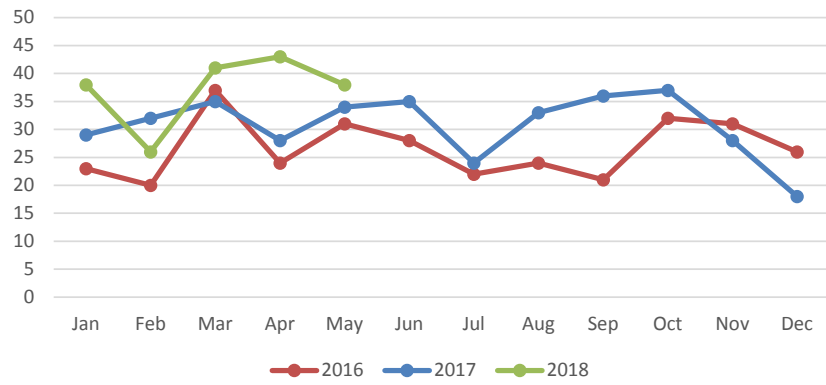
Enforcement Contacts - 2017

	Jan	Feb	Mar	Apr	May	Jun	Jul	Aug	Sep	Oct	Nov	Dec	YTD
Felony Arrest	29	32	35	28	34	35	24	33	36	37	28	18	369
YTD 2017	29	61	96	124	158	193	217	250	286	323	351	369	
Misd. Arrest	96	82	112	100	109	107	106	137	129	142	131	104	1,355
YTD 2017	96	178	290	390	499	606	712	849	978	1,120	1,251	1,355	
Cite & Release	356	578	355	252	222	155	261	654	385	730	287	200	4,435
YTD 2017	356	934	1,289	1,541	1,763	1,918	2,179	2,833	3,218	3,948	4,235	4,435	
Field Interview	175	336	322	349	418	336	348	545	749	646	508	466	5,198
YTD 2017	175	511	833	1,182	1,600	1,936	2,284	2,829	3,578	4,224	4,732	5,198	

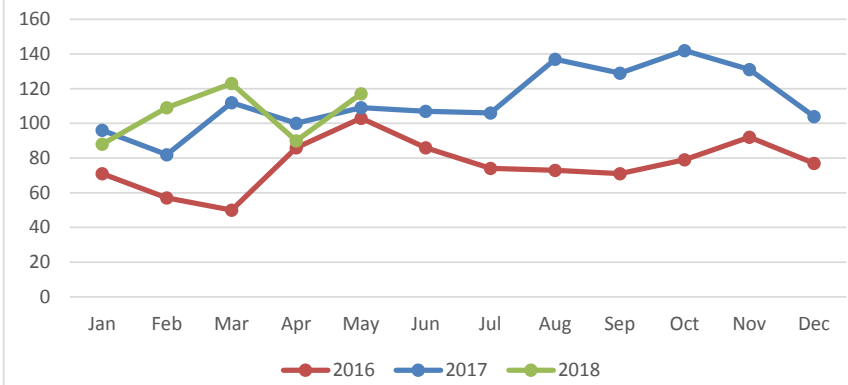
Enforcement Contacts - 2016

	Jan	Feb	Mar	Apr	May	Jun	Jul	Aug	Sep	Oct	Nov	Dec	YTD
Felony Arrest	23	20	37	24	31	28	22	24	21	32	31	26	319
YTD 2016	23	43	80	104	135	163	185	209	230	262	293	319	
Misd. Arrest	71	57	50	86	103	86	74	73	71	79	92	77	919
YTD 2016	71	128	178	264	367	453	527	600	671	750	842	919	
Cite & Release	424	538	443	195	591	195	314	162	239	229	229	246	3,805
YTD 2016	424	962	1,405	1,600	2,191	2,386	2,700	2,862	3,101	3,330	3,559	3,805	
Field Interview	175	501	219	469	482	422	350	490	372	425	444	355	4,704
YTD 2016	175	676	895	1,364	1,846	2,268	2,618	3,108	3,480	3,905	4,349	4,704	

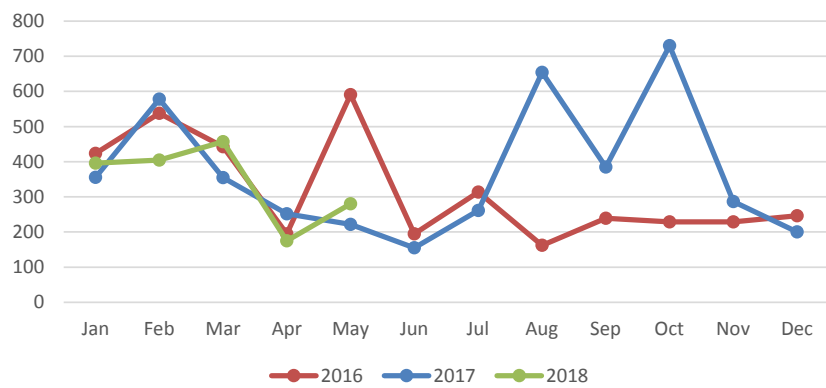
Felony Arrests



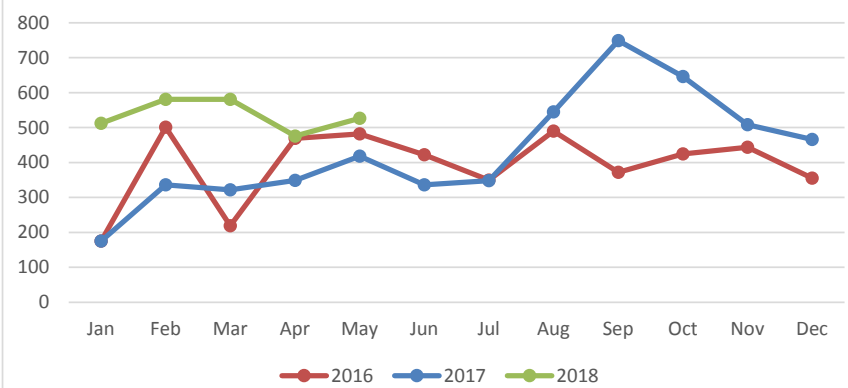
Misdemeanor Arrests



Cite & Release



Field Interviews



Parking Enforcement - 2018

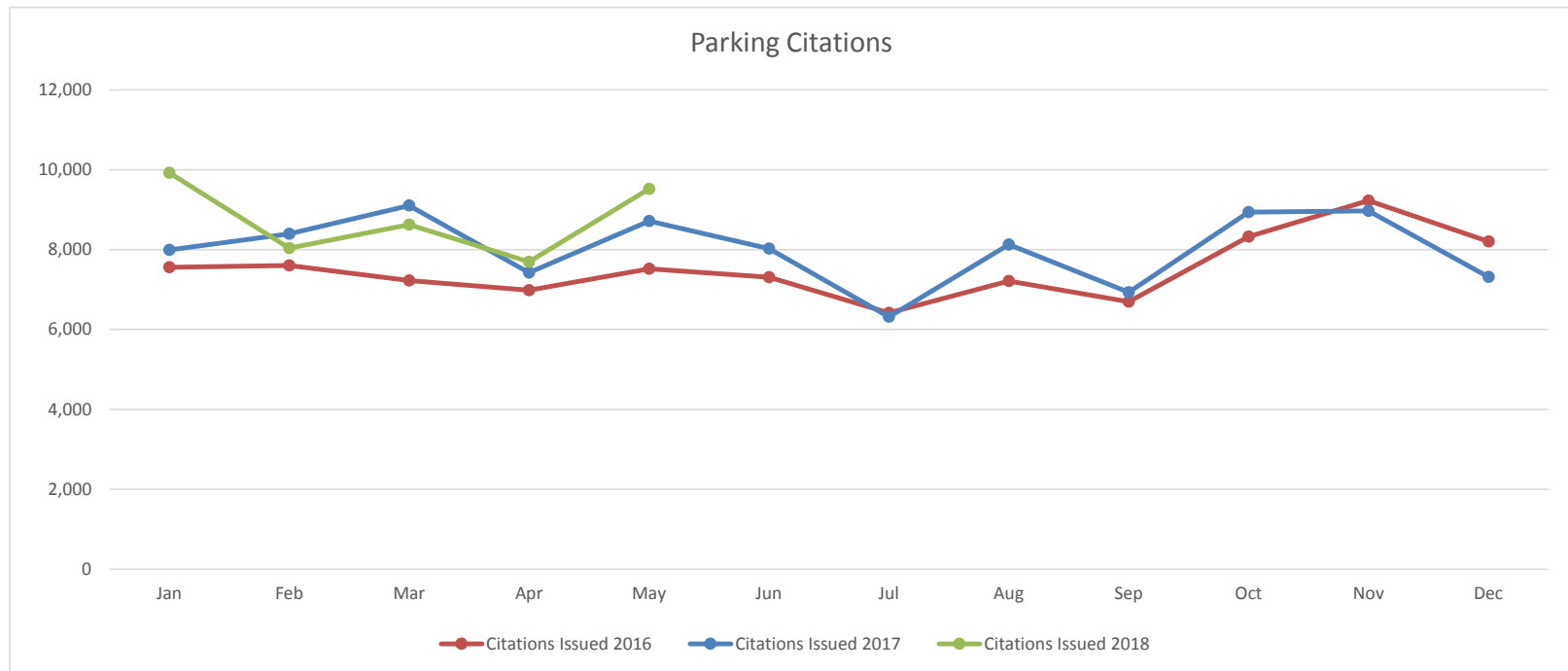
	Jan	Feb	Mar	Apr	May	Jun	Jul	Aug	Sep	Oct	Nov	Dec	YTD
Citations Issued	9,925	8,042	8,629	7,697	9,520								43,813
YTD 2018	9,925	17,967	26,596	34,293	43,813								
Contested	2,121	1,808	2,152	1,782	1,827								9,690
YTD 2018	2,121	3,929	6,081	7,863	9,690								
Dismissed	1,502	1,200	1,448	1,160	1,152								6,462
YTD 2018	1,502	2,702	4,150	5,310	6,462								

Parking Enforcement - 2017

	Jan	Feb	Mar	Apr	May	Jun	Jul	Aug	Sep	Oct	Nov	Dec	YTD
Citations Issued	7,997	8,400	9,104	7,424	8,716	8,028	6,318	8,131	6,933	8,939	8,973	7,316	96,279
YTD 2017	7,997	16,397	25,501	32,925	41,641	49,669	55,987	64,118	71,051	79,990	88,963	96,279	
Contested	1,324	1,673	1,761	1,796	1,912	1,681	1,587	1,734	1,578	1,793	1,556	2,116	20,511
YTD 2017	1,324	2,997	4,758	6,554	8,466	10,147	11,734	13,468	15,046	16,839	18,395	20,511	
Dismissed	821	1,000	1,136	1,223	1,288	1,070	998	1,115	937	1,107	940	1,375	13,010
YTD 2017	821	1,821	2,957	4,180	5,468	6,538	7,536	8,651	9,588	10,695	11,635	13,010	

Parking Enforcement - 2016

	Jan	Feb	Mar	Apr	May	Jun	Jul	Aug	Sep	Oct	Nov	Dec	YTD
Citations Issued	7,559	7,608	7,225	6,988	7,521	7,312	6,419	7,218	6,698	8,326	9,229	8,205	90,308
YTD 2016	7,559	15,167	22,392	29,380	36,901	44,213	50,632	57,850	64,548	72,874	82,103	90,308	
Contested	1,211	1,297	1,112	938	1,289	1,248	1,179	1,063	979	1,259	1,433	1,139	14,147
YTD 2016	1,211	2,508	3,620	4,558	5,847	7,095	8,274	9,337	10,316	11,575	13,008	14,147	
Dismissed	722	788	688	738	847	772	668	649	602	690	855	733	8,752
YTD 2016	722	1,510	2,198	2,936	3,783	4,555	5,223	5,872	6,474	7,164	8,019	8,752	



Warrant Arrests

	Jan	Feb	Mar	Apr	May	Jun	Jul	Aug	Sep	Oct	Nov	Dec
2018												
BART Felony Warrants	2	1	3	0	2							
BART Misdemeanor Warrants	3	3	2	2	6							
O/S Felony Warrants	12	10	16	29	29							
O/S Misdemeanor Warrants	40	37	68	55	60							
Monthly Total	57	51	89	86	97							
YTD Total	57	108	197	283	380							
2017												
BART Felony Warrants	1	2	1	1	2	3	1	5	1	1	1	0
BART Misdemeanor Warrants	6	4	3	5	9	2	6	17	10	3	8	3
O/S Felony Warrants	20	19	20	18	18	15	10	9	18	16	14	6
O/S Misdemeanor Warrants	39	40	53	53	54	44	52	53	48	74	60	36
Monthly Total	66	65	77	77	83	64	69	84	77	94	83	45
YTD Total	66	131	208	285	368	432	501	585	662	756	839	884
2016												
BART Felony Warrants	0	0	0	1	0	0	0	0	0	0	1	1
BART Misdemeanor Warrants	11	18	8	3	3	4	0	0	0	0	2	3
O/S Felony Warrants	16	28	23	12	6	9	15	12	8	20	17	11
O/S Misdemeanor Warrants	53	35	35	34	48	35	41	32	30	28	33	62
Monthly Total	80	81	66	50	57	48	56	44	38	48	53	77
YTD Total	80	161	227	277	334	382	438	482	520	568	621	698



San Francisco Bay Area Rapid Transit Police Department Criminal Investigations Section Monthly Summary Report May 2018

Detective Assignments

Total number of cases assigned to detectives during the month	Number of cases that are still being investigated by detectives	Number of cases that all current leads have been exhausted	Number of cases that were sent to the district attorney's offices for a review	Number of cases that the district attorney's offices has not made a final disposition	Number of cases that were charged/probation violation by the district attorney	Number of cases that were not charged by the district attorney's offices	Percentage of cases that the district attorney's offices filed charges	Total number of cases that are assigned to a detective as of June 6, 2018
164	102	4	58	24	20	14	34%	108

Submitted By: Sgt. J. Power S-49

Date: 06/06/2018

San Francisco Bay Area Rapid Transit Police Department Criminal Investigations Section May 2018

Detective Closure Rate

Total number of cases assigned to detectives previous 12 months (June 2017 - May 2018)	Number of cases that are still being investigated by detectives	Number of cases that all current leads have been suspended	Number of cases that were sent to the district attorney's offices for a review (suspect identified)	Percentage of cases closed by identification of suspect	Percentage of cases suspended	Percentage of cases Open
1894	220	380	1258	66%	20%	12%

Charles	D39	212	30	40	139	66%	19%	14%
Johnson	D51	263	68	28	166	63%	11%	26%
Lahanas	D75	149	9	11	119	80%	7%	6%
Plumley	D31	371	15	80	272	73%	22%	4%
Medeiros	D55	515	74	119	317	62%	23%	14%
Krehbiel	D27	247	7	83	145	59%	34%	3%
Davis	D54	137	17	19	100	73%	14%	12%

CASES IN DETECTIVE QUEUE

		<i>Total</i>	<i>Past 60 days</i>
Charles	D39	6	
Johnson	D51	23	2
Lahanas	D75	10	
Medeiros	D55	34	1
Plumley	D31	15	3
Krehbiel	D27	4	
Davis	D54	15	5

Submitted by: Sgt. John J. Power #S49
Date: June 6, 2018

D51 currently out on industrial leave. Cases to be re-assigned and cleared.

Assembly Bill 716 - 2018

	Jan	Feb	Mar	Apr	May	Jun	Jul	Aug	Sep	Oct	Nov	Dec	YTD
Prohibition Orders Issued	20	28	28	33	31								140
YTD 2018	20	48	76	109	140								

Assembly Bill 716 - 2017

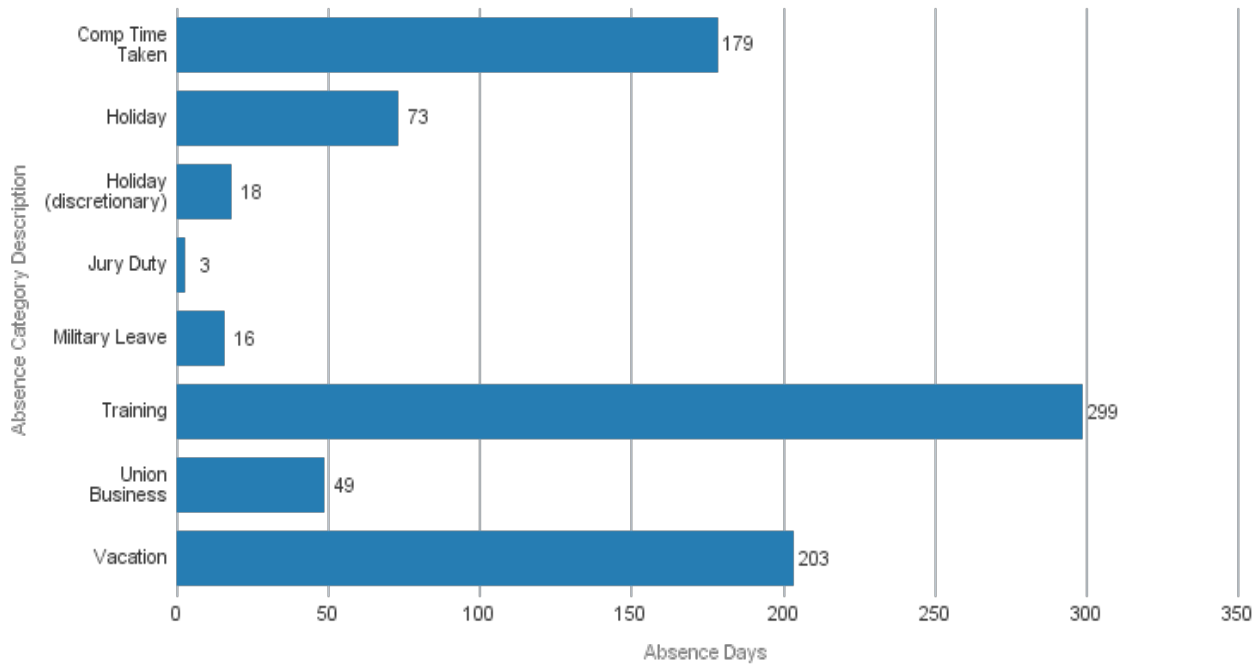
	Jan	Feb	Mar	Apr	May	Jun	Jul	Aug	Sep	Oct	Nov	Dec	YTD
Prohibition Orders Issued	18	18	30	27	37	30	24	21	27	31	38	14	315
YTD 2017	18	36	66	93	130	160	184	205	232	263	300	315	

Assembly Bill 716 - 2016

	Jan	Feb	Mar	Apr	May	Jun	Jul	Aug	Sep	Oct	Nov	Dec	YTD
Prohibition Orders Issued	21	16	22	17	39	23	20	25	19	31	24	19	276
YTD 2016	21	37	59	76	115	138	158	183	202	233	257	276	

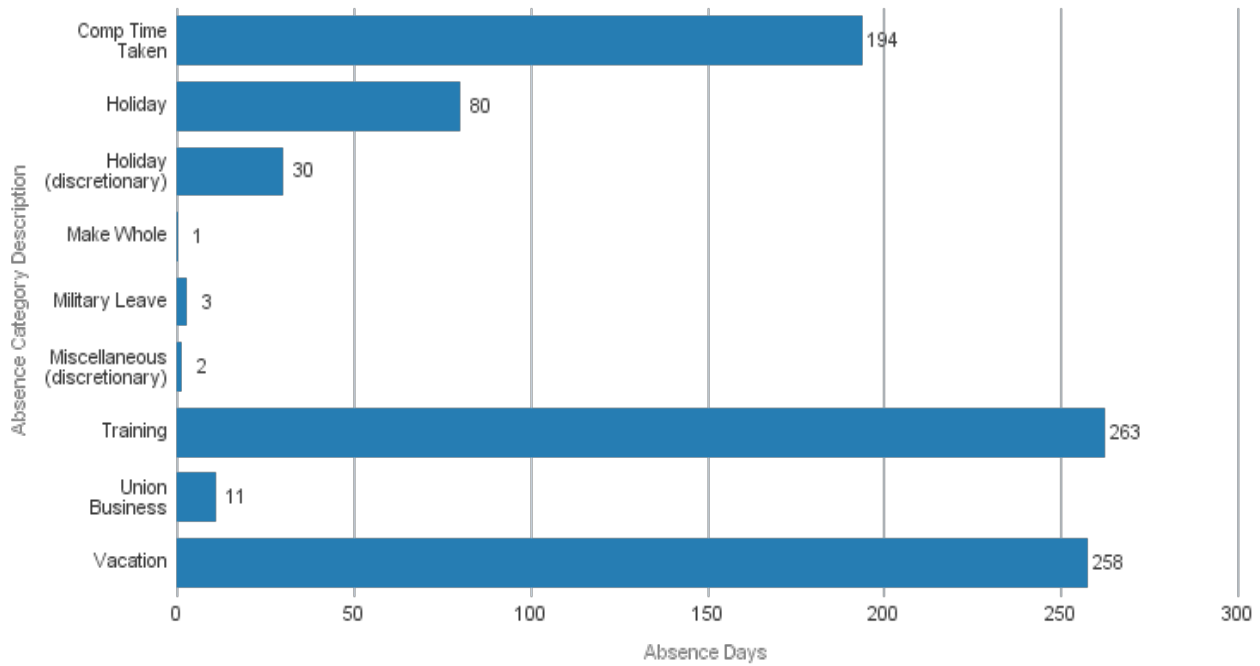


Scheduled Absence Overview - May 2018



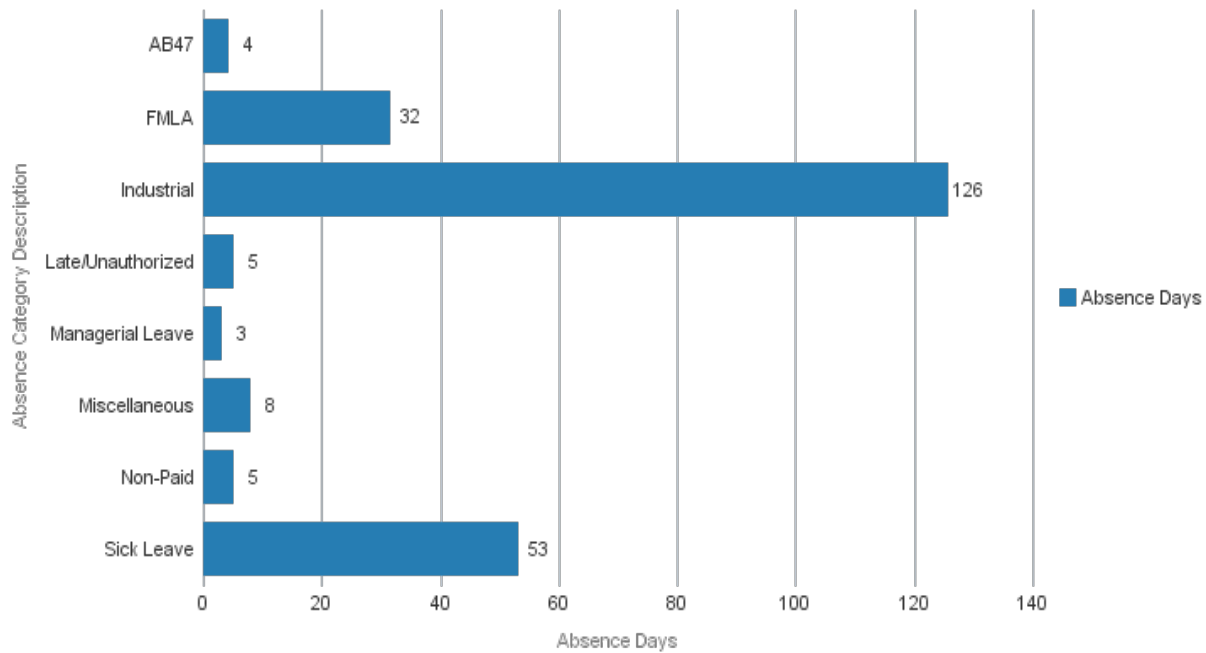
Absence Category Description	Absence Hours	Absence Days	% Total
Comp Time Taken	1,801	179	21%
Holiday	690	73	9%
Holiday (discretionary)	180	18	2%
Jury Duty	30	3	0%
Military Leave	188	16	2%
Training	2,775	299	36%
Union Business	527	49	6%
Vacation	2,046	203	24%
Grand Total	8,236	840	100%

Scheduled Absence Overview - May 2017



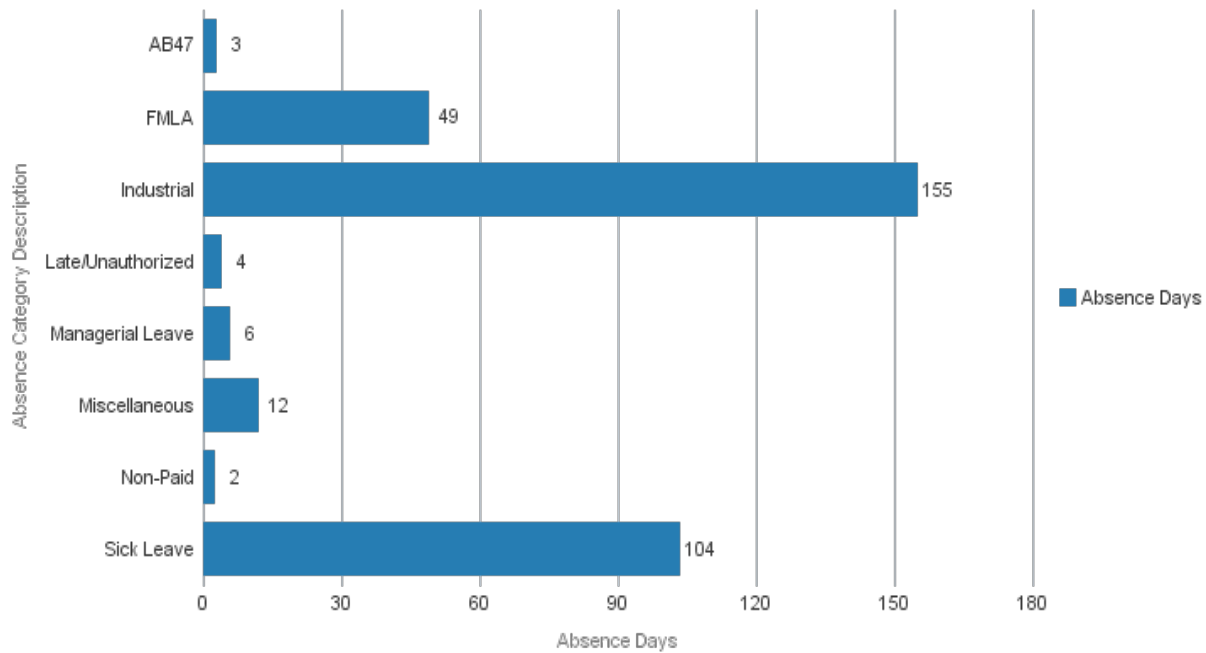
Absence Category Description	Absence Hours	Absence Days	% Total
Comp Time Taken	1,977	194	23%
Holiday	767	80	10%
Holiday (discretionary)	310	30	4%
Make Whole	8	1	0%
Military Leave	30	3	0%
Miscellaneous (discretionary)	16	2	0%
Training	2,405	263	31%
Union Business	118	11	1%
Vacation	2,627	258	31%
Grand Total	8,258	841	100%

Unscheduled Absence Overview - May 2018



Absence Category Description	Absence Hours	Absence Days	% Total
AB47	42	4	2%
FMLA	316	32	13%
Industrial	1,282	126	53%
Late/Unauthorized	54	5	2%
Managerial Leave	30	3	1%
Miscellaneous	92	8	3%
Non-Paid	57	5	2%
Sick Leave	546	53	23%
Grand Total	2,418	236	100%

Unscheduled Absence Overview - May 2017



Absence Category Description	Absence Hours	Absence Days	% Total
AB47	29	3	1%
FMLA	474	49	15%
Industrial	1,638	155	46%
Late/Unauthorized	41	4	1%
Managerial Leave	60	6	2%
Miscellaneous	120	12	4%
Non-Paid	24	2	1%
Sick Leave	1,010	104	31%
Grand Total	3,396	335	100%

BART PD OVERTIME MONTHLY REPORT

May 2018

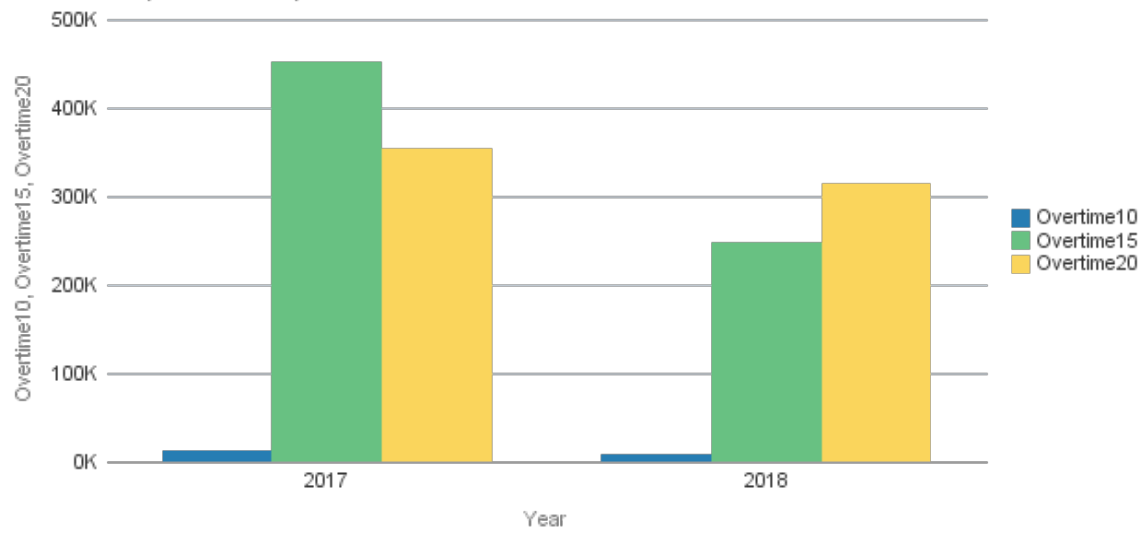
Activity Name	Activity ID	2017			2018		
		Overtime10	Overtime15	Overtime20	Overtime10	Overtime15	Overtime20
Administration	ADMIN	0	515	0	0	0	0
Adv Officer Training	ADVOF	200	4,236	10,333	579	15,629	12,534
BART Labor	BLABR	389	11,618	17,044	203	5,581	2,947
BF OT Discr Day BPD	BFDCS	0	256	1,838	230	1,224	2,071
BF OT Industrial Leave BPD	BFILV	0	11,568	22,777	0	1,038	964
BF OT Minimum Rest	BFRST	0	812	0	0	301	482
BF OT Patrol TRN	BFTRN	0	226	2,607	0	2,359	8,111
BF OT Recovery Day	BFRCV	0	986	6,148	611	12,647	26,657
BF OT Training BPD	BFTRN	0	226	2,607	0	2,359	8,111
BF OT Vacancy BPD	BFVCN	0	4,140	9,400	0	13,371	20,826
BF OT Vacation BPD	BFVAC	567	22,154	42,158	1,180	19,183	35,217
BF Sick/FMLA/Brvment	BFSLV	620	14,399	12,403	184	9,117	9,758
Boardroom Security	BRDRM	0	703	594	0	742	2,562
Bus Bridge Services	BUA15	333	0	3,489	0	0	0
COPPS Project/Event	COPPS	24	2,108	5,408	0	80	0
Civil Unrest	PRTST	1,522	12,408	0	0	3,408	988
Coliseum Events	CEOPS	0	4,468	7,251	1,299	13,732	20,679
Construction Management	CNMGT	0	0	0	748	8,749	23,805
Court Appearance	COURT	0	0	0	0	339	0
Crowd Ctrl for Spec	CROWD	0	0	0	0	2,355	4,976
Detectives Unit OT	INVST	0	7,618	226	0	1,744	0
E-BART SECURITY	EBSEC	0	0	0	248	5,674	7,843
EMS/OWS Pltfrm Detail	PLTFM	1,165	7,303	10,506	700	9,858	11,731
Evidence Collection	EVIDN	0	71	0	0	89	0
Explorer Advisors	EXPLR	0	0	1,928	0	2,092	0
Final Design	FDSGN	0	3,296	0	0	3,408	5,104
Held Over/Late Case	HLDOV	0	13,652	968	0	8,034	1,097
Honor Guard Detail	HONOR	0	4,786	3,702	0	3,243	509
IA Unit Overtime	IAUNT	0	3,331	5,243	0	2,145	0
Jnt Terrorism Tskfrce	JTTFO	0	1,347	798	0	0	1,038
K-9 Team Training	K9TTR	0	524	0	0	0	0

Labor Negotiations	LABNE	0	0	0	0	0	1,221
	LBRNG	0	0	0	0	0	921
MTC SECURITY	MTCSC	0	0	0	0	957	0
Meeting Attendance	MTNGS	0	2,166	0	0	3,252	646
Mgr of Sec Programs	SECPR	0	1,472	0	0	1,059	0
Operating	OPRTN	1	23,001	17,188	1,634	17,133	14,684
P&T Unit Overtime	PTUNT	0	10,855	7,906	119	11,305	13,301
Police Admin OT	PADMN	1,049	14,249	4,385	0	5,674	1,005
Ptrl Special Enforcement	SPECL	1,235	35,445	27,893	460	30,702	27,158
Raiders - Walkway	RAIDR	3,012	112,531	57,376	0	0	0
Raiders Game Cleanup	RAIDR	3,012	112,531	57,376	0	0	0
Range Staff Training	RANGE	0	0	0	482	0	0
Rev Protection Unit OT	RVPRT	0	135	0	0	95	0
SF STA CLN SEC	DSFCS	0	0	0	129	4,053	9,167
SWAT Team Expenses	SWATT	0	0	1,167	0	0	1,929
SWAT Team Training	SWATT	0	0	1,167	0	0	1,929
Special Events	SPEVN	0	2,098	4,711	0	3,542	8,186
Training	TRNGG	0	0	0	386	1,734	5,299
Training Other	TRNOT	0	3,930	6,265	287	12,852	7,185
Union Business	UNBUS	0	0	0	0	3,314	12,996
Walnut Creek Transit Village	C154A	0	0	0	0	2,511	0
Total		13,128	451,165	352,861	9,479	246,686	313,638

May 2018

817,154

569,803

Overtime10, Overtime15, Overtime20

Communications Center - 2018

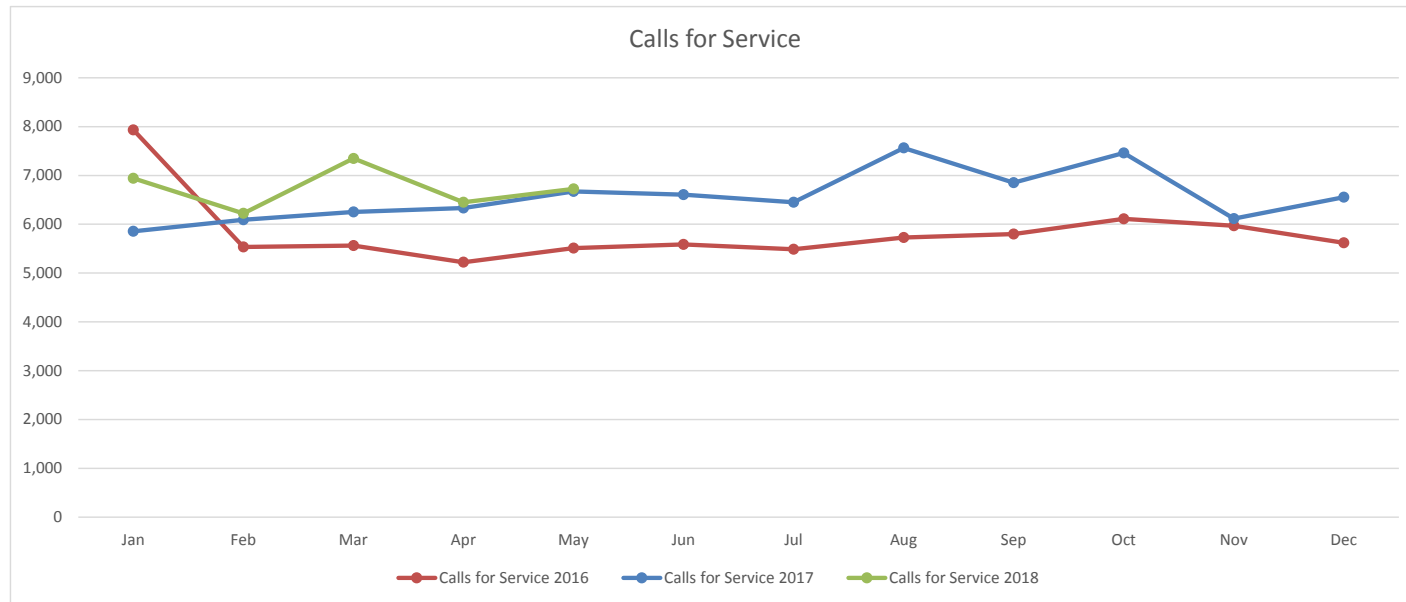
	Jan	Feb	Mar	Apr	May	Jun	Jul	Aug	Sep	Oct	Nov	Dec	YTD
Calls for Service	6,941	6,222	7,349	6,452	6,724								33,688
YTD 2018	6,941	13,163	20,512	26,964	33,688								
Priority 1 Calls	192	180	183	214	214								983
YTD 2018	192	372	555	769	983								
Medical Emergencies	414	310	344	373	386								1,827
YTD 2018	414	724	1,068	1,441	1,827								

Communications Center - 2017

	Jan	Feb	Mar	Apr	May	Jun	Jul	Aug	Sep	Oct	Nov	Dec	YTD
Calls for Service	5,855	6,093	6,250	6,331	6,670	6,605	6,448	7,562	6,850	7,460	6,117	6,553	78,794
YTD 2017	5,855	11,948	18,198	24,529	31,199	37,804	44,252	51,814	58,664	66,124	72,241	78,794	
Priority 1 Calls	214	192	194	182	209	234	210	185	174	204	154	176	2,328
YTD 2017	214	406	600	782	991	1,225	1,435	1,620	1,794	1,998	2,152	2,328	
Medical Emergencies	425	327	357	344	367	385	376	344	356	387	387	463	4,518
YTD 2017	425	752	1,109	1,453	1,820	2,205	2,581	2,925	3,281	3,668	4,055	4,518	

Communications Center - 2016

	Jan	Feb	Mar	Apr	May	Jun	Jul	Aug	Sep	Oct	Nov	Dec	YTD
Calls for Service	7,934	5,536	5,563	5,221	5,511	5,587	5,488	5,726	5,797	6,111	5,970	5,621	70,065
YTD 2016	7,934	13,470	19,033	24,254	29,765	35,352	40,840	46,566	52,363	58,474	64,444	70,065	
Priority 1 Calls	177	151	171	154	177	156	180	181	177	178	178	157	2,037
YTD 2016	177	328	499	653	830	986	1,166	1,347	1,524	1,702	1,880	2,037	
Medical Emergencies	305	277	334	315	305	304	281	278	334	313	307	389	3,742
YTD 2016	305	582	916	1,231	1,536	1,840	2,121	2,399	2,733	3,046	3,353	3,742	



BART Watch - 2018

	Jan	Feb	Mar	Apr	May	Jun	Jul	Aug	Sep	Oct	Nov	Dec	YTD
Suspicious Activity	235	212	213	262	202								1,124
Crime in Progress	177	151	194	257	226								1,005
Illegally Parked Vehicle	24	24	16	38	10								112
Vandalism	60	68	102	67	75								372
Unattended Bag or Package	44	50	44	42	32								212
Sexual Assault/Lewd Behavior	36	71	52	29	47								235
Report a Crime Tip	60	44	51	54	40								249
Robbery/Theft	28	22	21	35	30								136
Unsecure Door	19	7	14	9	10								59
Disruptive Behavior	1167	1111	1408	1314	1367								6,367
Panhandling	172	177	223	155	214								941
Total	2022	1937	2338	2262	2253								10,812

Total Downloads: 48,709

Total Reports Made

Anonymous: 39.88%

Non-Anonymous: 60.12%