

BART

Warm Springs Extension

Construction Details

Summary of Activity

Construction of the Fremont Central Park Subway will begin behind the Archstone Apartment and Business Complex in the rear parking lot.

Estimated Start Date

May 2010

Estimated Duration

Work in Parking lot area- 8 months

General Construction between Walnut Ave. and Stevenson Blvd. – 20 months

Impacts

- Approximately 40 parking spaces will be taken out of service from May to December.
- Expect increased dust, noise and inconvenience from construction equipment.

General Work Hours

7 am to 7 pm
Monday through Friday

Saturday work as necessary

Lake Elizabeth Work Hours

7 am to 10 pm
Monday through Friday

8 am to 6 pm – Saturday

Construction Notification # 16

Construction To Begin Behind the Archstone Apartment & Business Complex Temporary Parking Impacts Expected

April 28, 2010

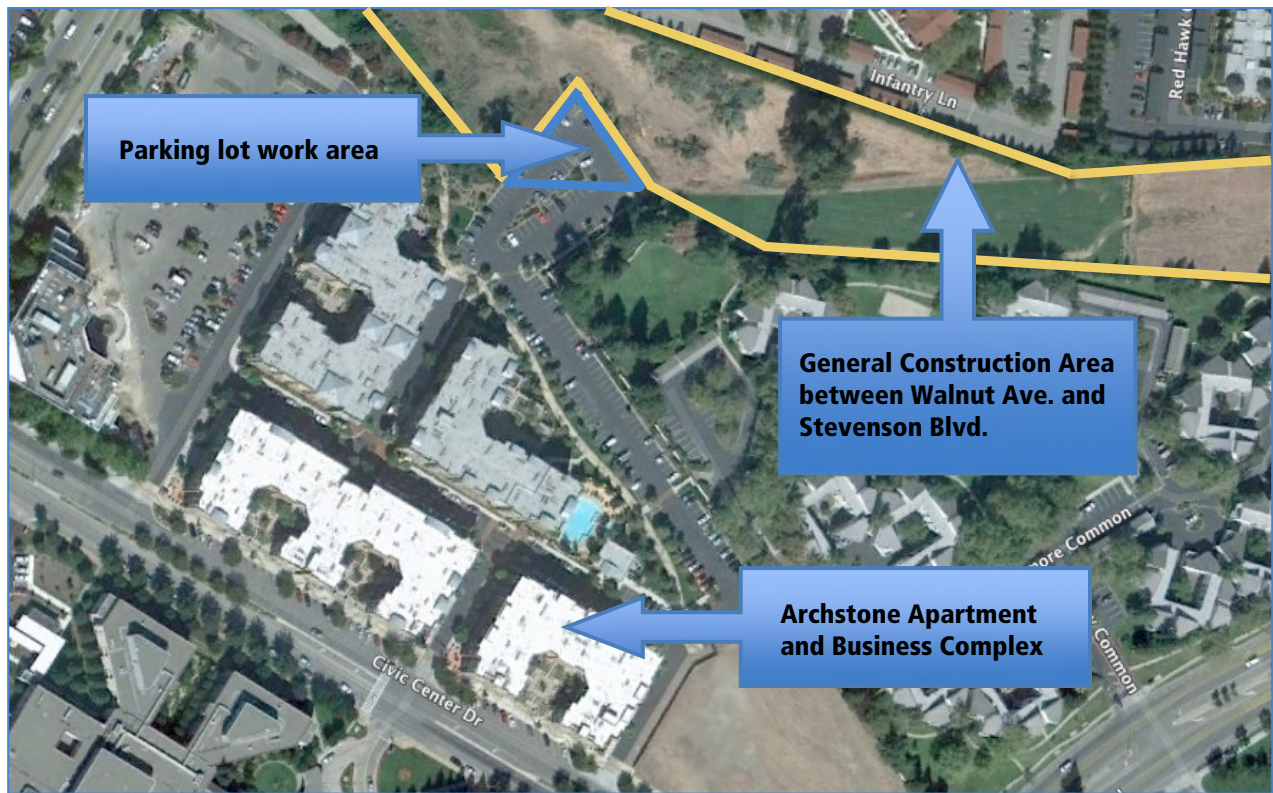
Construction of the Fremont Central Park Subway between Walnut Avenue and Stevenson Boulevard has begun. A portion of this construction will take place in the rear parking lot of the Archstone Apartment and Business Complex. A map showing the work area is on the opposite side of this notification. The work will include, but is not limited to:

- Setting up fencing to define the contractor's work area
- Removing a portion of the rear parking lot at the Archstone Apartment and Business Complex
- Reconfiguring the South Tule Pond storm water storage area at Walnut Avenue
- Constructing the embankment and retaining walls necessary for the underground trackway
- Upon completion restoring the parking lot to the prior configuration

During construction approximately 40 parking spaces will be temporarily taken out of service in the rear parking lot. The work in the parking lot will take approximately 8 months. The estimated duration of construction between Walnut Avenue and Stevenson Boulevard is 20 months.

We appreciate your continued patience during construction. If you have questions regarding these activities, please contact our project information line at (510) 476-3900 or e-mail bartwarmsspringsextension@bart.gov. You can also visit our Community Relations Field office located in Fremont Central Park off of Stevenson Boulevard Monday – Friday 8 am to 5 pm

Archstone Parking Lot Construction Area Work Limits



The area shown here represents a general configuration of the fence line.

BART Warm Springs Extension
ba Fremont Central Park Subway

1320 Stevenson Blvd.

Fremont, Ca 94537