

2022

BART Redistricting: Plan E2



GEOinovo Solutions Inc.

BART Redistricting

3/4/2022

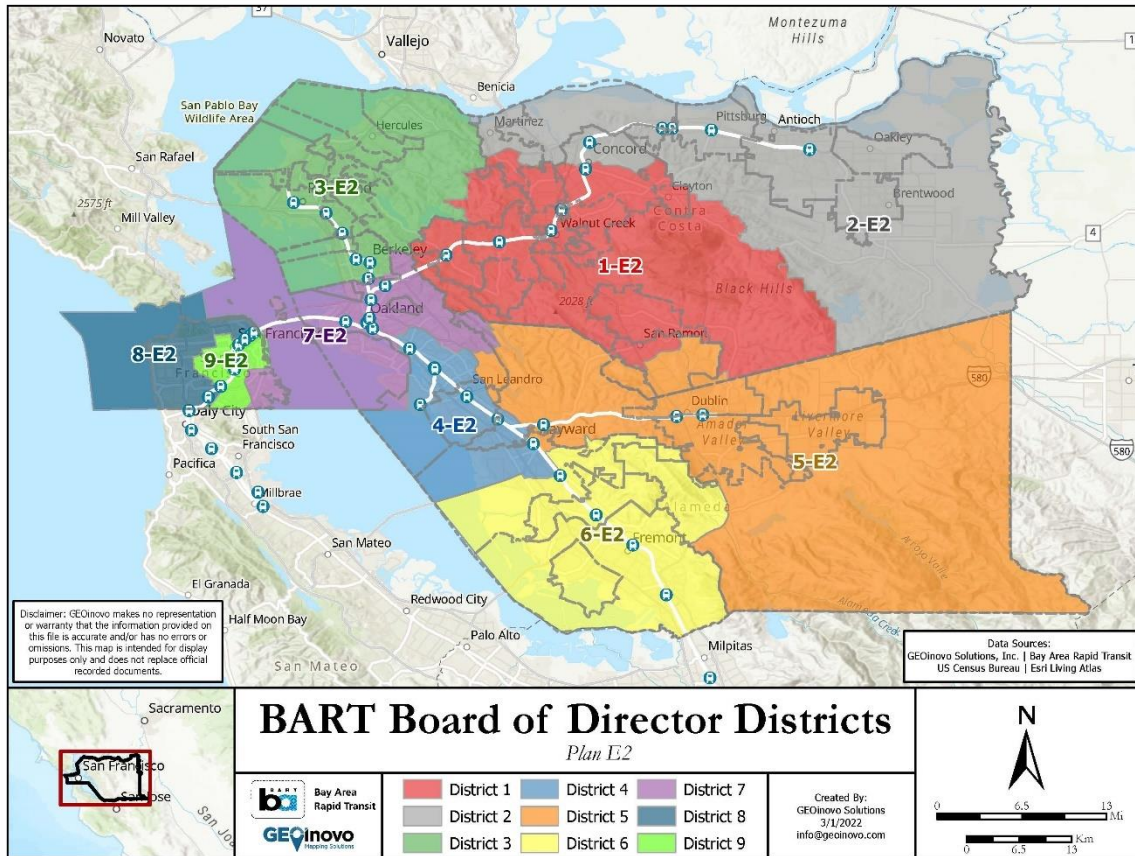
TABLE OF CONTENTS

1. Overview of Plan E2.....	1
1.1. Overview Map of Plan E2.....	1
2. Plan E2 by District.....	3
2.1. District 1.....	3
2.2. District 2.....	4
2.3. District 3.....	6
2.4. District 4.....	7
2.5. District 5.....	9
2.6. District 6.....	10
2.7. District 7.....	12
2.8. District 8.....	14
2.9. District 9.....	15

1. OVERVIEW OF PLAN E2

1.1. OVERVIEW MAP OF PLAN E2

Below shows the overview of Plan E2. The individual districts are described further in Section 2. Plan E2 by District.



Plan E2 was developed using comments from the BART Board of Directors and members of the public from the Board of Directors Meeting on February 24, 2022. The following table details actionable items provided during the meeting.

Comment	Director/Public	Plan E2
Pacific Heights	Director Li	✓
Marina District	Director Li	✓
Increased Latino influence, D9	Director Dufty	✓
W Oakland to D7	Director Simon, Dufty, McPartland, Li	✓
W Oakland, MacArthur in D7	Director Simon	✓
Oakland, African American pop	Director Simon	✓
District 4: Urban Core District	Director Raburn	✓

Changes to the Citizen Voting Age Population (CVAP) per District

Plan E2 proposes substantial changes to some of the districts to maintain balanced districts and incorporate feedback from the meetings. For example, District 7 only maintains 25.7% of CVAP when compared to the current district. By contrast, District 6 maintains 95.2% of CVAP when compared to the current district 6.

Detailed breakdowns for each District are provided in Section 2. Plan E2 by District.

Bay Area Rapid Transit (BART) Census Population Shifts for Proposed Board of Director Districts

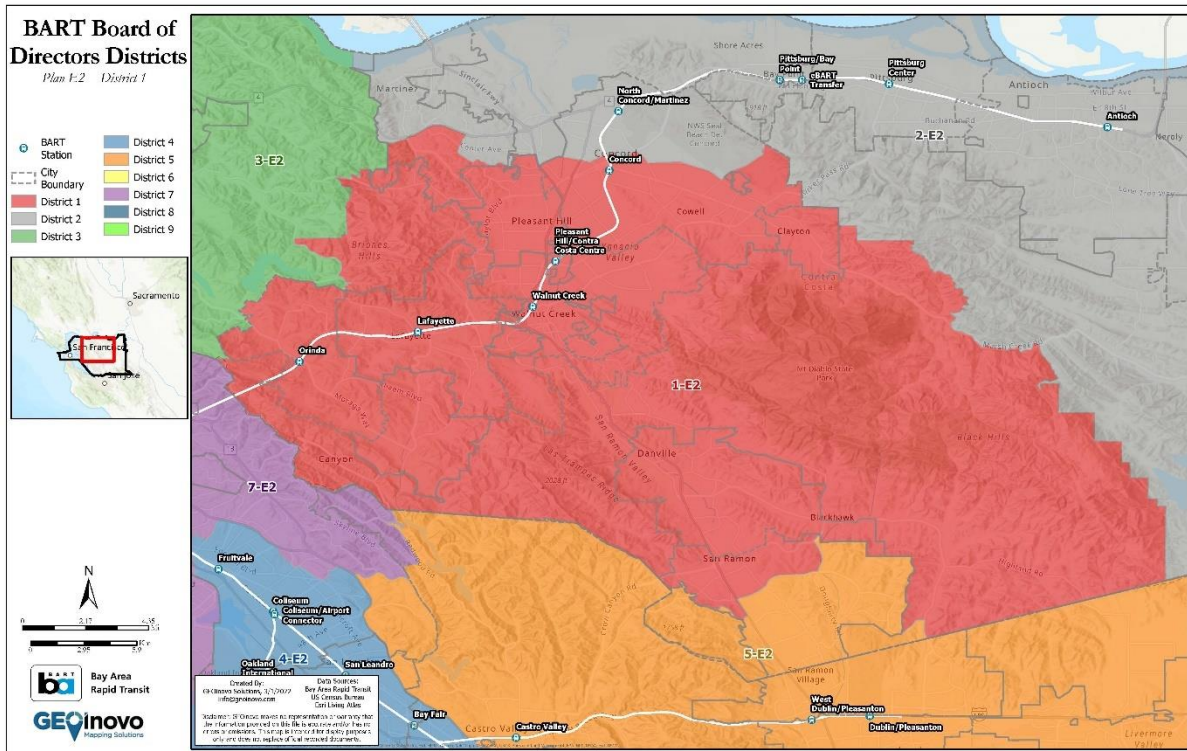
The population shifts for Plan E2 are similar to the CVAP population changes for each of the nine districts in Plan E2. Population shifts for each district and each proposed plan vary depending on changes between 2010 and 2020 U.S. Census Block geography, different rates of population growth throughout the BART service area and responding to feedback from the public meetings.

This plan presents districts with varying levels of similarity to the current BART districts. The greatest change is in District 7 with only 27.9% of its current population remaining in District 7. The next district to show major changes is District 3 with 31.3% of its current population remaining in the proposed Plan E2, District 3. District 4 maintains 48.8% of its current population. District 1 maintains greater than 75% of its current population. Districts 5, 8, and 9 maintain greater than 81% of their current populations. The districts most similar to the current boundaries are District 2 with 91.4% of its current population and District 6 with 95.6% of its current population.

Detailed breakdowns for each District are provided in Section 2. Plan E2 by District.

2. PLAN E2 BY DISTRICT

2.1. DISTRICT 1



District 1 is in Contra Costa County and includes the Southern portion of the City of Martinez, Pleasant Hill, Walnut Creek, the City of Danville, the Northern part of the City of San Ramon, the City of Lafayette, the Southern part of the City of Concord, including Cowell, Four Corners, and Meinert, the City of Moraga, the City of Orinda, and the City of Clayton.

BART Stations included in District 1:

- Orinda
- Lafayette
- Walnut Creek
- Pleasant Hill/Contra Costa Centre
- Concord (shared with District 2)

2.1.1. CVAP Population Changes to District 1

The following table was taken from file “BART_CVAPShift_PlanD-E2_20220301”.

Plan E2, District 1: Pop. from Current Districts	Total Population	Percent Population
Total	294,119	100.0%
District 1	226,505	77.0%

BART Stations included in District 2:

- Concord (shared with District 1)
- North Concord/Martinez
- Pittsburg/Bay Point
- Antioch
- Pittsburg Center
- eBART Transfer

2.2.1. CVAP Population Changes to District 2

The following table was taken from file “BART_CVAPShift_PlanD-E2_20220301”.

Plan E2, District 2: Pop. from Current Districts	Total Population	Percent Population
Total	264,301	100.0%
District 1	25,888	9.8%
District 2	238,413	90.2%

Figure 3 District 2 maintains 90.2% of the current CVAP population and takes 9.8% from the current District 1.

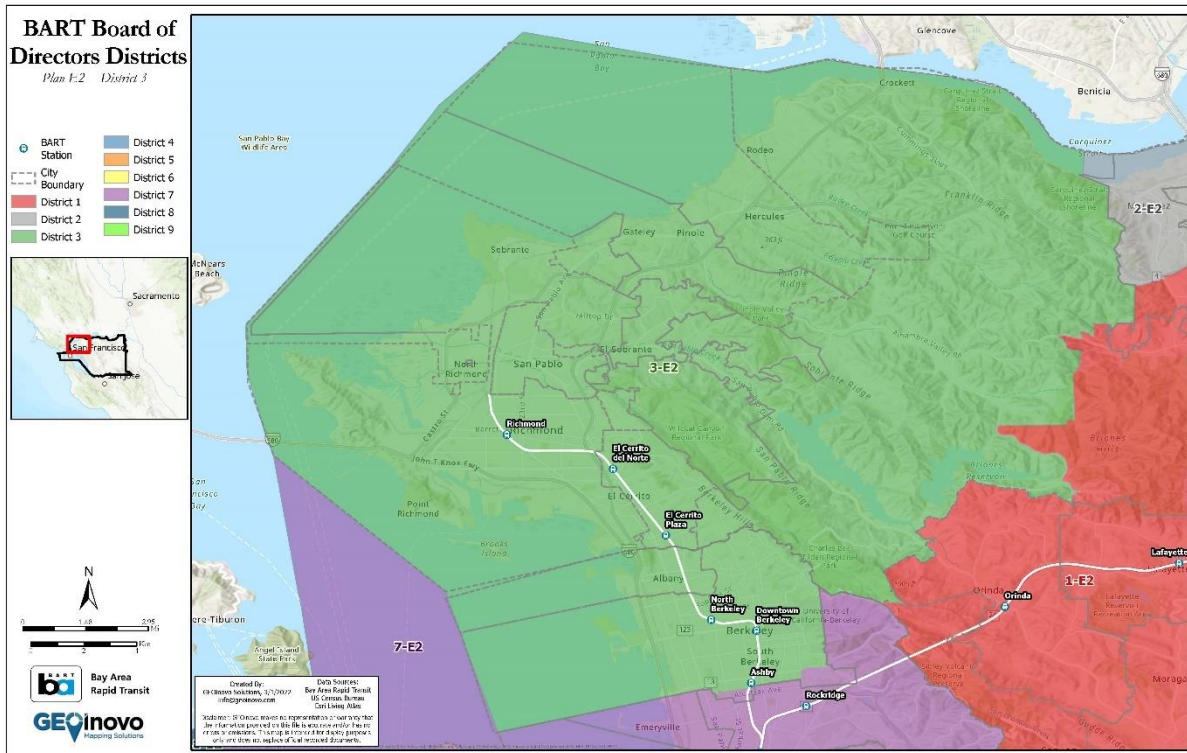
2.2.2. Population Changes to District 2

The following table was taken from file “BART_PopulationShift_PlanD-E2_20220302”.

Plan E2, District 2: Pop. from Current Districts	Total Population	Percent Population
Total	414,013	100.0%
District 1	35,491	8.6%
District 2	378,522	91.4%

Figure 4 District 2 maintains 91.4% of the current population and takes 8.6% from the current District 1.

2.3. DISTRICT 3



District 3 is in both Contra Costa and Alameda Counties and includes the City of Hercules, the City of Pinole, the City of San Pablo, the City of Richmond, the City of El Cerrito, the City of Albany, the majority of the City of Berkeley including the University of California Berkeley and excepting a few neighborhoods to the South of Ashby Ave, and unincorporated parts of Contra Costa County including North Richmond and El Sobrante.

BART Stations included in District 3:

- Richmond
- El Cerrito del Norte
- El Cerrito Plaza
- North Berkeley
- Downtown Berkeley
- Ashby (shared with District 7)

2.3.1. CVAP Population Changes to District 3

The following table was taken from file “BART_CVAPShift_PlanD-E2_20220301”.

Plan E2, District 3: Pop. from Current Districts	Total Population	Percent Population
Total	267,399	100.0%
District 1	622	0.2%

District 3	95,378	35.7%
District 7	171,399	64.1%

Figure 5 District 3 maintains 35.7% of the current CVAP population and takes 64.1% from the current District 7, and 0.2% from the current District 1.

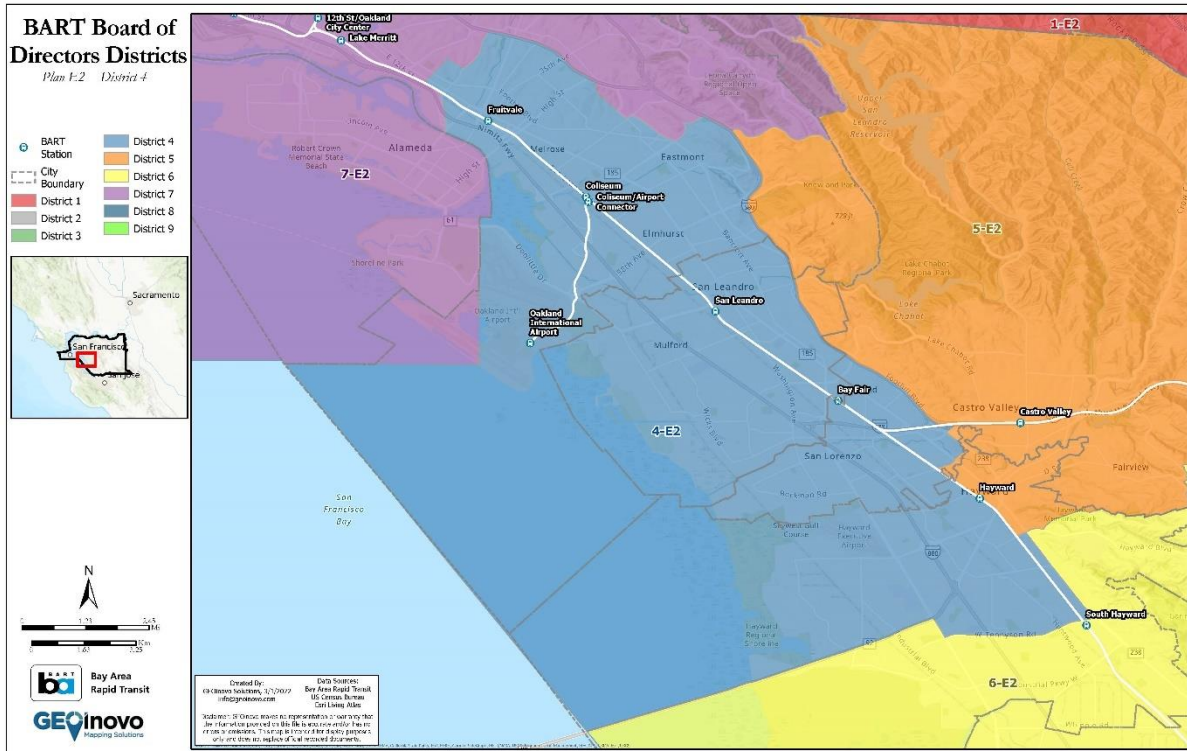
2.3.2. Population Changes to District 3

The following table was taken from file “BART_PopulationShift_PlanD-E2_20220302”.

Plan E2, District 3: Pop. from Current Districts	Total Population	Percent Population
Total	414,028	100.0%
District 1	718	0.2%
District 3	129,474	31.3%
District 7	283,836	68.6%

Figure 6 District 3 maintains 31.3% of the current population, takes 68.6% from the current District 7, and 0.2% from the current District 1.

2.4. DISTRICT 4



District 4 is in Alameda County and includes the Oakland neighborhoods of Melrose, Eastmont, Elmhurst, and Oakland International Airport, Northwest Hayward including Hayward Executive Airport, Hayward Regional Shoreline, and Mt Eden. Other points of interest in District 4 include Ashland, the Western part of San Leandro, and Monarch Bay Golf Club.

BART Stations included in District 4:

- Fruitvale
- Coliseum
- Coliseum/Airport Connector
- Oakland International Airport
- San Leandro
- Bay Fair
- Hayward (shared with District 5)
- South Hayward (shared with District 6)

2.4.1. CVAP Population Changes to District 4

The following table was taken from file “BART_CVAPShift_PlanD-E2_20220301”.

Plan E2, District 4: Pop. from Current Districts	Total Population	Percent Population
Total	238,108	100.0%
District 3	81,079	34.1%
District 4	111,483	46.8%
District 5	43,393	18.2%
District 6	2,153	0.9%

Figure 7 District 4 maintains 46.8% of the current CVAP population, takes 34.1% from the current District 3, 18.2% from District 5, and 0.9% from the current District 6.

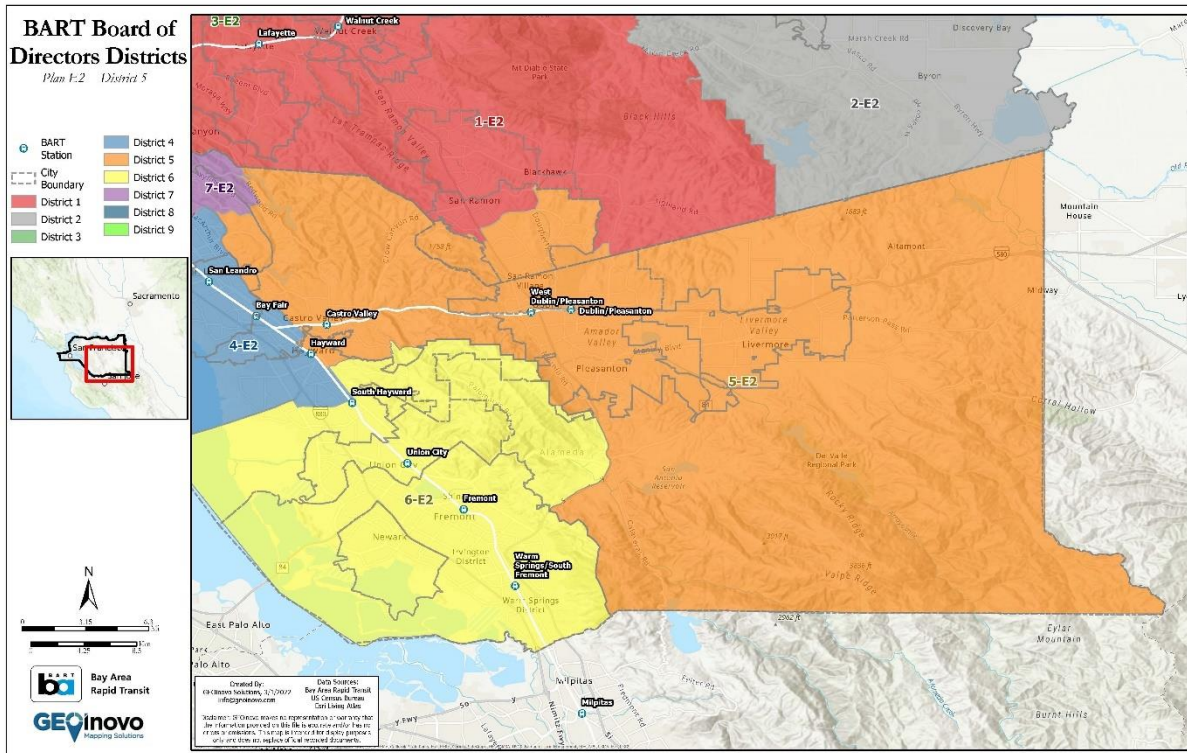
2.4.2. Population Changes to District 4

The following table was taken from file “BART_PopulationShift_PlanD-E2_20220302”.

Plan E2, District 4: Pop. from Current Districts	Total Population	Percent Population
Total	413,886	100.0%
District 3	129,272	31.2%
District 4	202,023	48.8%
District 5	79,228	19.1%
District 6	3,363	0.8%

Figure 8 District 4 maintains 48.8% of the current population, takes 31.2% from the current District 3, 19.1% from District 5, and 0.8% from District 6.

2.5. DISTRICT 5



District 5 is in Alameda and Contra Costa Counties and includes a portion of the City of Hayward ranging from the Castro Valley BART station in the North to the Hayward station in the South. Major places and landmarks in this area include the Bishop Ranch Regional Open Space, Lake Chabot Regional Park, Knowland Park, Fairview, Sunol Regional Wilderness, and San Antonio Reservoir. District 5 also includes the City of Pleasanton expect for a portion near Kilkare Woods, the City of Livermore, the City of Dublin, the Southeastern part of San Ramon, and rural areas of east Alameda County.

BART Stations included in District 5:

- Hayward (shared with District 4)
- Castro Valley
- West Dublin/Pleasanton
- Dublin/Pleasanton

2.5.1. CVAP Population Changes to District 5

The following table was taken from file “BART_CVAPShift_PlanD-E2_20220301”.

Plan E2, District 5: Pop. from Current Districts	Total Population	Percent Population
Total	255,178	100.0%
District 1	32,334	12.7%

District 3	8,453	3.3%
District 5	214,384	84.0%
District 6	7	0.0%

Figure 9 District 5 maintains 84.0% of the current CVAP population, takes 12.7% from the current District 1, 3.3% from District 3, and 0.0% from the current District 6 (7 persons).

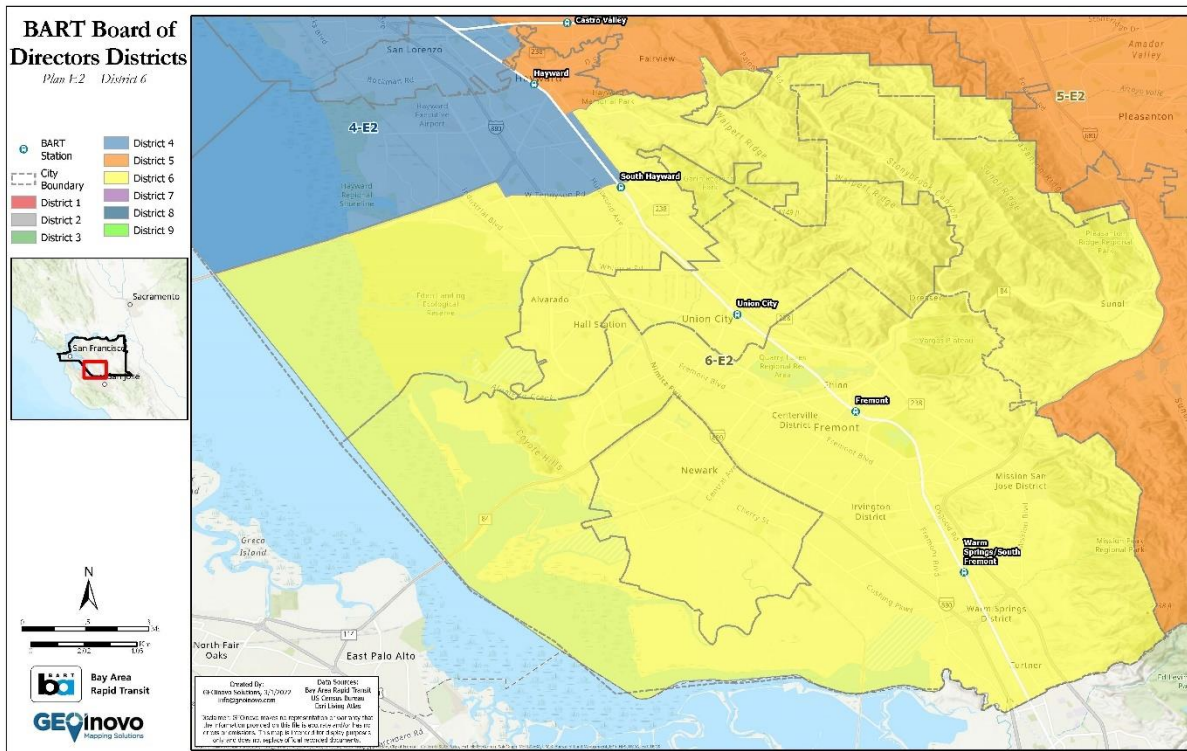
2.5.2. Population Changes to District 5

The following table was taken from file “BART_PopulationShift_PlanD-E2_20220302”.

Plan E2, District 5: Pop. from Current Districts	Total Population	Percent Population
Total	414,114	100.0%
District 1	64,071	15.5%
District 3	10,877	2.6%
District 5	339,153	81.9%
District 6	13	0.0%

Figure 10 District 5 maintains 81.9% of the current population, takes 15.5% from the current District 1, 2.6% from District 3, and 0.0% from the current District 6 (13 persons).

2.6. DISTRICT 6



District 6 is in Alameda County and includes the City of Fremont, Union City, the City of Newark, and the Southern part of the City of Hayward. Major landmarks include Ohlone

College, Mission San Jose District, the Vargas Plateau, Pleasanton Ridge Regional Park, California State University East Bay, TPC Stonebrae Country Club and surrounding neighborhoods, Garin Regional Park, and Eden Landing Ecological Reserve.

BART Stations included in District 6:

- Fremont
- South Hayward (shared with District 4)
- Union City
- Warm Springs/South Fremont

2.6.1. CVAP Population Changes to District 6

The following table was taken from file “BART_CVAPShift_PlanD-E2_20220301”.

Plan E2, District 6: Pop. from Current Districts	Total Population	Percent Population
Total	257,291	100.0%
District 5	12,336	4.8%
District 6	244,955	95.2%

Figure 11 District 6 maintains 95.2% of the current CVAP population and takes 4.8% from the current District 5.

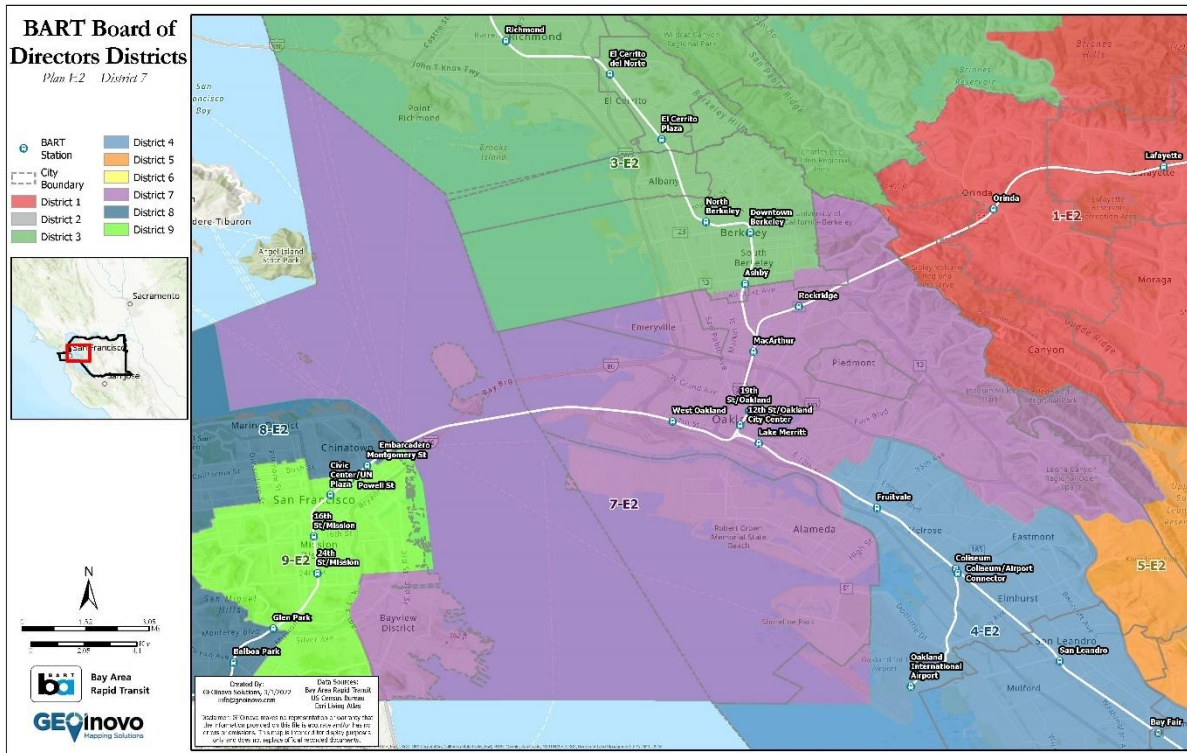
2.6.2. Population Changes to District 6

The following table was taken from file “BART_PopulationShift_PlanD-E2_20220302”.

Plan E2, District 6: Pop. from Current Districts	Total Population	Percent Population
Total	414,035	100.0%
District 5	18,363	4.4%
District 6	395,672	95.6%

Figure 12 District 6 maintains 95.6% of the current population and takes 4.4% from the current District 5.

2.7. DISTRICT 7



District 7 is in Alameda and San Francisco Counties and includes the Northern portion of Oakland including neighborhoods West Oakland, the City of Piedmont, the City of Emeryville, the City of Alameda, the Bayview District of San Francisco, and Treasure Island. Places of interest in District 7 include Shoreline Park, Robert Crown Memorial State Beach, Mills College, Leona Canyon Regional Open Space, Joaquin Miller Park, and Claremont Canyon Regional Preserve.

BART Stations included in District 7:

- Ashby (shared with District 3)
- Rockridge
- MacArthur
- 19th St/Oakland
- 12th St/Oakland City Center
- Lake Merritt
- West Oakland

2.7.1. CVAP Population Changes to District 7

The following table was taken from file “BART_CVAPShift_PlanD-E2_20220301”.

Plan E2, District 7: Pop. from Current Districts	Total Population	Percent Population
Total	290,887	100.0%
District 3	60,607	20.8%
District 4	153,403	52.7%
District 7	74,791	25.7%
District 8	1,563	0.5%
District 9	523	0.2%

Figure 13 District 7 maintains 25.7% of the current CVAP population, takes 52.7% from District 4, 20.8% from District 3, 0.5% from District 8, and 0.2% from District 9.

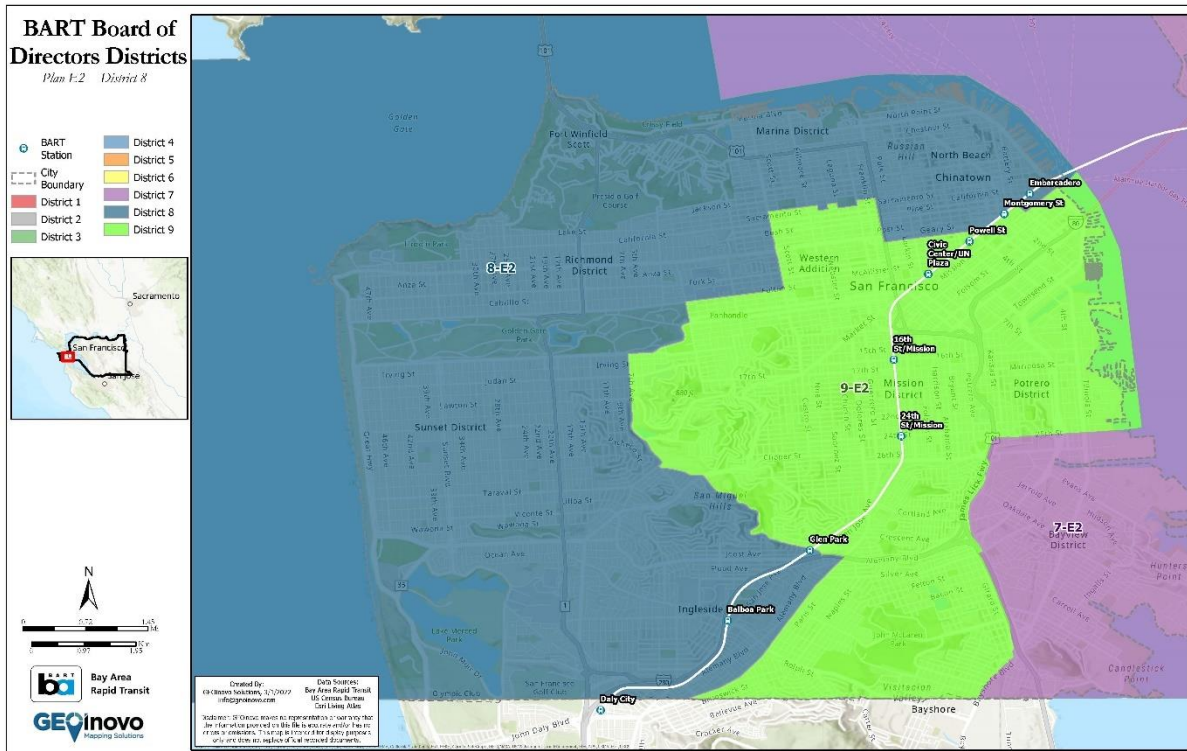
2.7.2. Population Changes to District 7

The following table was taken from file “BART_PopulationShift_PlanD-E2_20220302”.

Plan E2, District 7: Pop. from Current Districts	Total Population	Percent Population
Total	414,080	100.0%
District 3	79,480	19.2%
District 4	216,082	52.2%
District 7	115,372	27.9%
District 8	2,201	0.5%
District 9	945	0.2%

Figure 14 District 7 maintains 27.9% of the current population, takes 52.2% from District 4, 19.2% from District 3, 0.5% from District 8, and 0.2% from District 9.

2.8. DISTRICT 8



District 8 is in San Francisco County and includes the following neighborhoods and points of interest in San Francisco: North Beach, Chinatown, Marina District, Fort Winfield Scott, Richmond District, Sunset District, Ingleside, the Golden Gate Bridge, and the world-famous Lombard St.

BART Stations included in District 8:

- Montgomery St (shared with District 9)
- Embarcadero (shared with District 9)
- Powell St (shared with District 9)
- Glen Park (shared with District 9)
- Balboa Park

2.8.1. CVAP Population Changes to District 8

The following table was taken from file “BART_CVAPShift_PlanD-E2_20220301”.

Plan E2, District 8: Pop. from Current Districts	Total Population	Percent Population
Total	330,065	100.0%
District 7	17	0.0%
District 8	276,859	83.9%

District 9	53,189	16.1%
-------------------	---------------	--------------

Figure 15 District 8 maintains 83.9% of the current CVAP population, takes 16.1% from the current District 9, and 0.0% from District 7 (17 persons).

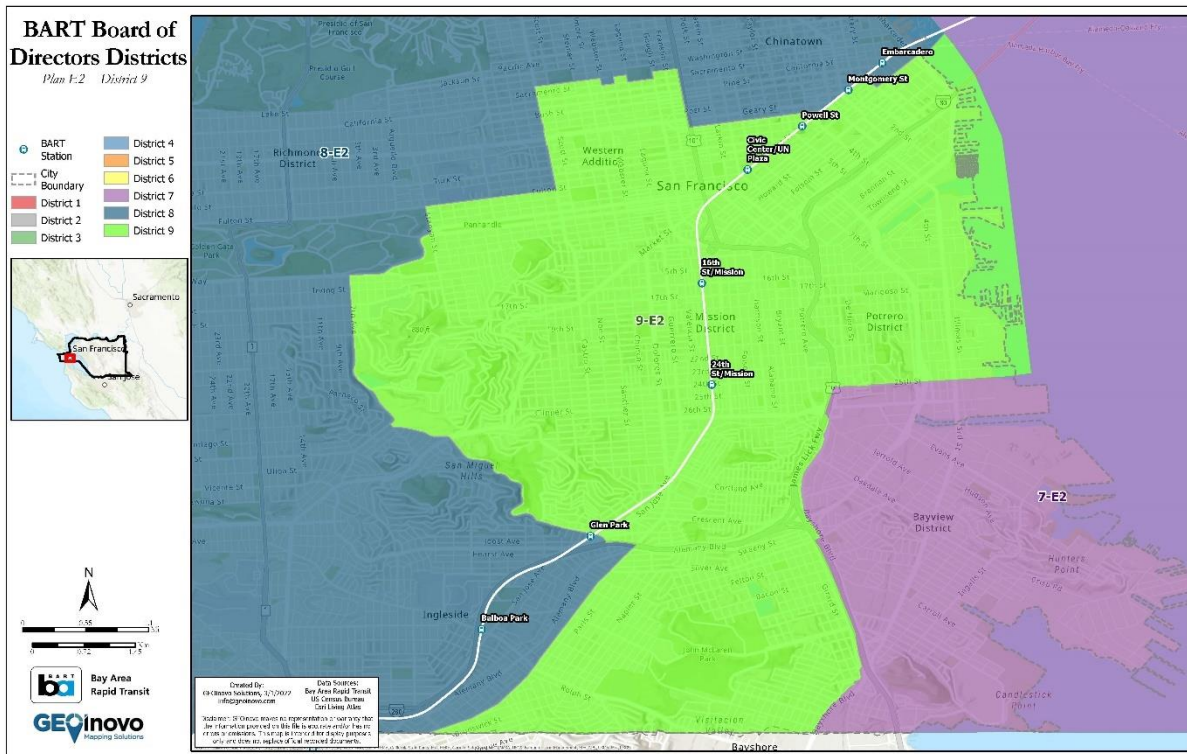
2.8.2. Population Changes to District 8

The following table was taken from file “BART_PopulationShift_PlanD-E2_20220302”.

Plan E2, District 8: Pop. from Current Districts	Total Population	Percent Population
Total	414,072	100.0%
District 7	59	0.0%
District 8	346,684	83.7%
District 9	67,329	16.3%

Figure 16 District 8 maintains 83.7% of the current population, takes 16.3% from the current District 9, and 0.0% from District 7 (59 persons).

2.9. DISTRICT 9



District 9 is in San Francisco County and includes the following neighborhoods and points of interest in San Francisco: Western Addition, Twin Peaks, Diamond Heights, Glen Canyon Park, St Mary’s Recreation Center, Bernal Heights Park, John McLaren Park and surrounding neighborhoods, Union Square, Mission District, Potrero Center, Pier 50, and the Salesforce Transit Center.

BART Stations included in District 9:

- Montgomery St (shared with District 8)
- Embarcadero (shared with District 8)
- Powell St (shared with District 8)
- Civic Center/UN Plaza
- 16th St/Mission
- 24th St/Mission
- Glen Park (shared with District 8)

2.9.1. CVAP Population Changes to District 9

The following table was taken from file “BART_CVAPShift_PlanD-E2_20220301”.

Plan E2, District 9: Pop. from Current Districts	Total Population	Percent Population
Total	294,383	100.0%
District 7	24,645	8.4%
District 8	25,156	8.5%
District 9	244,582	83.1%

Figure 17 District 9 maintains 83.1% of the current CVAP population, takes 8.5% from the current District 8, and 8.4% from the current District 7.

2.9.2. Population Changes to District 9

The following table was taken from file “BART_PopulationShift_PlanD-E2_20220302”.

Plan E2, District 9: Pop. from Current Districts	Total Population	Percent Population
Total	414,061	100.0%
District 7	43,373	10.5%
District 8	34,805	8.4%
District 9	335,883	81.1%

Figure 18 District 9 maintains 81.1% of the current population, takes 8.4% from the current District 8, and 10.5% from District 7.