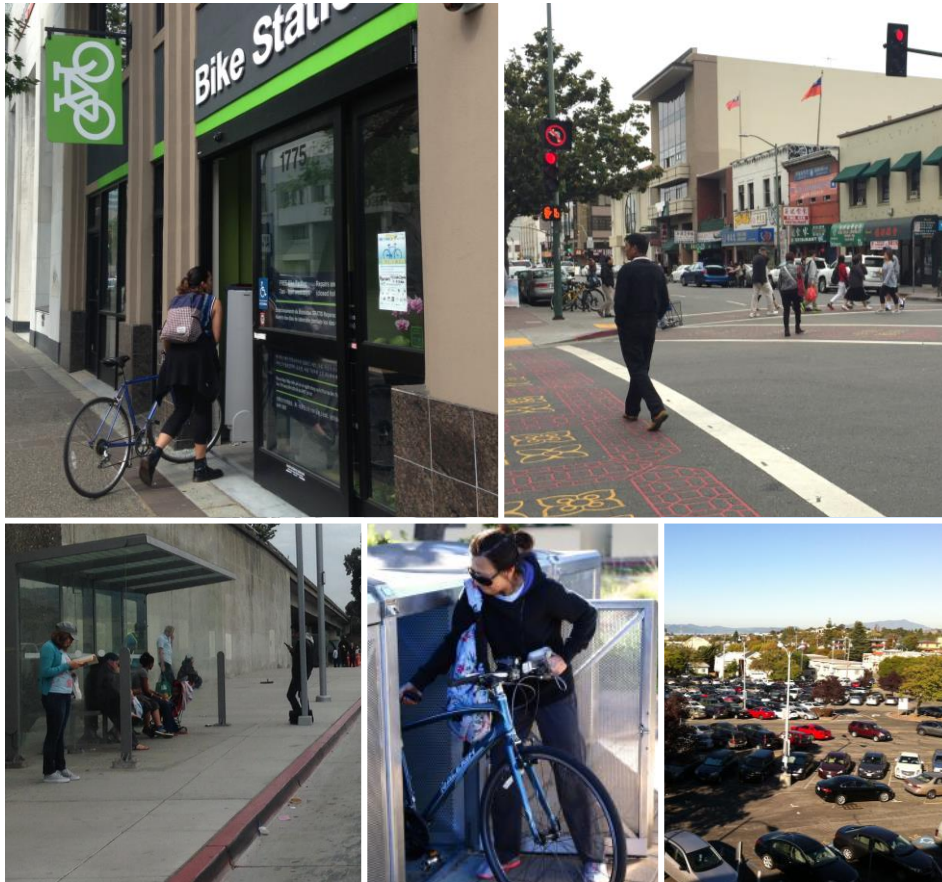




Station Access – \$135 Million



Expand Opportunities to Safely Access Stations



- **Scope:**
 - Achieve Station Access Policy Goals & Targets
 - Improve Active Transportation and enhance Access for Seniors & People with Disabilities
 - Renew Transit Transfer Facilities
 - Improve Parking Availability
- **Total Program: \$135 M**
 - Funds will leverage other sources
- **Happening Now:**
 - MacArthur Plaza and Under-Freeway Lighting
 - Bike Station Project Development
 - Ohlone Greenway at El Cerrito del Norte
 - Iron Horse Trail at Dublin/Pleasanton
 - Concord Plaza
 - eBART Corridor Access Study
 - Multimodal Access Design Guidelines
 - Districtwide Accessibility Improvement Plan
- **Next Steps:**
 - Advance design and implementation