

2022

BART Redistricting: Public Plan
104



GEOinovo Solutions Inc.

BART Redistricting

3/1/2022

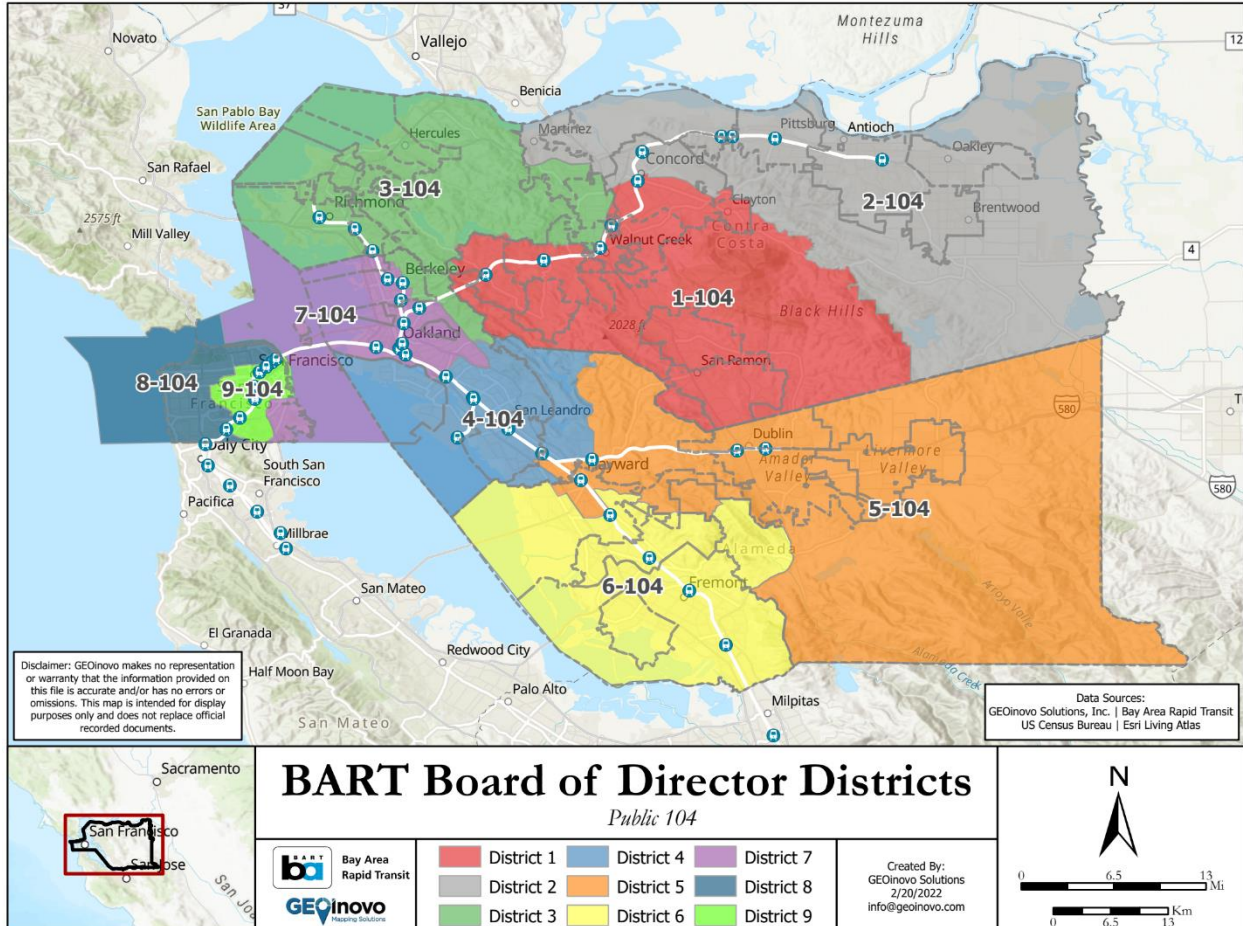
TABLE OF CONTENTS

- 1. Overview of Public Plan 104..... 1
 - 1.1. Overview Map of Public Plan 104..... 1
- 2. Public Plan 104 by District..... 2
 - 2.1. District 1..... 2
 - 2.2. District 2..... 4
 - 2.3. District 3..... 5
 - 2.4. District 4..... 7
 - 2.5. District 5..... 9
 - 2.6. District 6..... 11
 - 2.7. District 7..... 12
 - 2.8. District 8..... 14
 - 2.9. District 9..... 15

1. OVERVIEW OF PUBLIC PLAN 104

1.1. OVERVIEW MAP OF PUBLIC PLAN 104

Below shows the overview of Public Plan 104. The individual districts are described further in Section 2. Public Plan 104 by District.



Changes to the Citizen Voting Age Population (CVAP) per District

Public Plan 104 was submitted by David Pilpel. The primary goal was to follow city and county geography to the extent practicable while balancing total population. With this plan, some Districts remained similar while others changed. For example, District 5 maintains 94.9% of CVAP when compared to the current district. By contrast, District 3 only maintains 24.4% of CVAP.

Detailed breakdowns for each District are provided in Section 2. Public Plan 104 by District.

Bay Area Rapid Transit (BART) Census Population Shifts for Proposed Board of Director Districts

The population shifts for Public Plan 104 are similar to the CVAP population changes for each of the nine districts in Public Plan 104. Population shifts for each district and each proposed plan

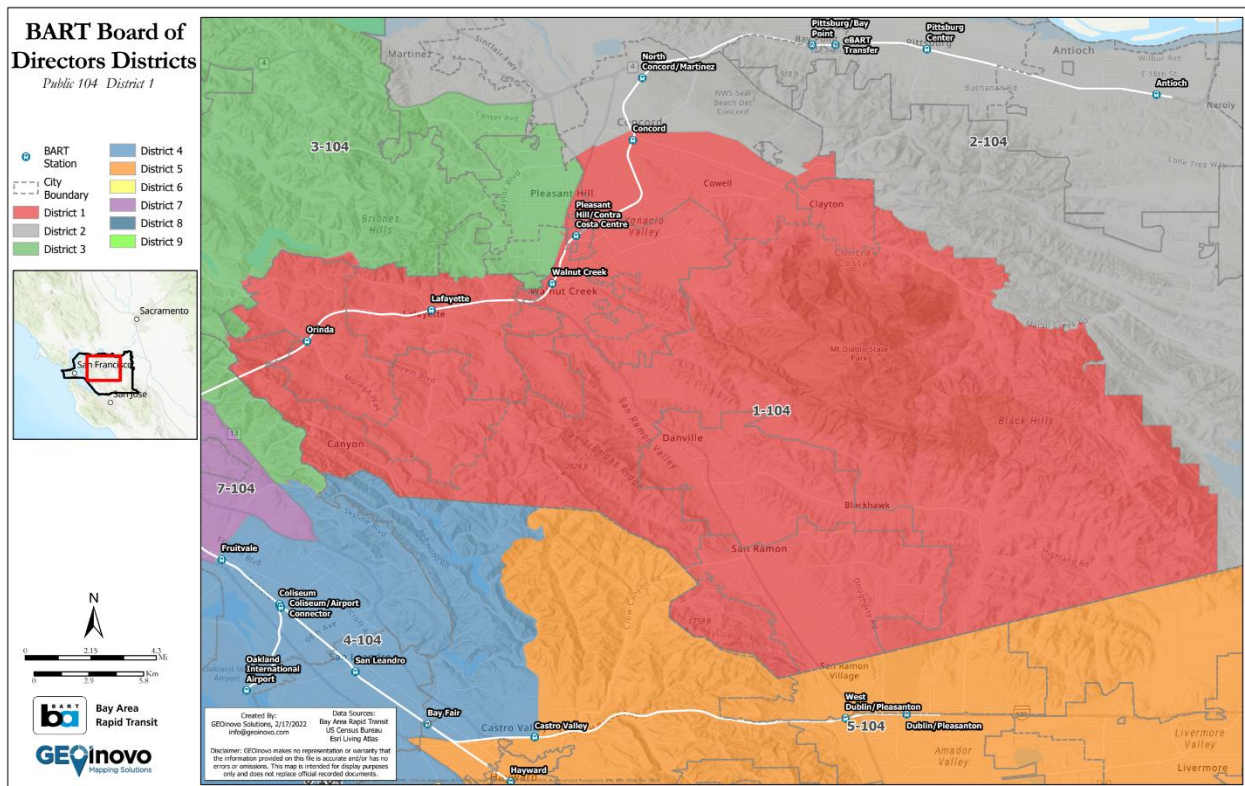
vary depending on changes between 2010 and 2020 U.S. Census Block geography and different rates of population growth throughout the BART service area.

In this plan, districts vary broadly from minimal change to more significant changes. Three districts (Districts 2, 5, and 6) maintain greater than 90% of their current populations. Districts 8 and 9 maintain greater than 85% of their current populations and District 1 maintains 75% of its current population. District 4 maintains just over 60% of its current population. Districts 3 and 7 have the greatest population changes with District 7 maintaining 36.6% of its current population and District 3 only maintaining 24.4% of its current population.

Detailed breakdowns for each District are provided in Section 2. Public Plan 104 by District.

2. PUBLIC PLAN 104 BY DISTRICT

2.1. DISTRICT 1



District 1 is in Contra Costa County and includes neighborhoods East of Route 680 in Pleasant Hill, Walnut Creek except for the communities West of Route 680, the City of Danville, the City of San Ramon, the City of Lafayette except for the area North of Springhill Rd., the Southern part of the City of Concord, including Cowell, Four Corners, and Meinert, the City of Moraga, the City of Orinda except for a rural portion to the West, and the City of Clayton.

BART Stations included in District 1:

- Orinda

- Lafayette
- Walnut Creek (shared with District 3)
- Pleasant Hill/Contra Costa Centre (shared with District 3)
- Concord (shared with District 2)

2.1.1. CVAP Population Changes to District 1

The following table was taken from file “BART_CVAPShift_Pub102-104_20220219”.

Pub 104, District 1: Pop. from Current Districts	Total Population	Percent Population
Total	277,206	100.0%
District 1	211,974	76.5%
District 2	25,795	9.3%
District 3	39,437	14.2%

Figure 1 District 1 maintains 76.5% of the current CVAP population, takes 9.3% from the current District 2, and 14.2% from District 3.

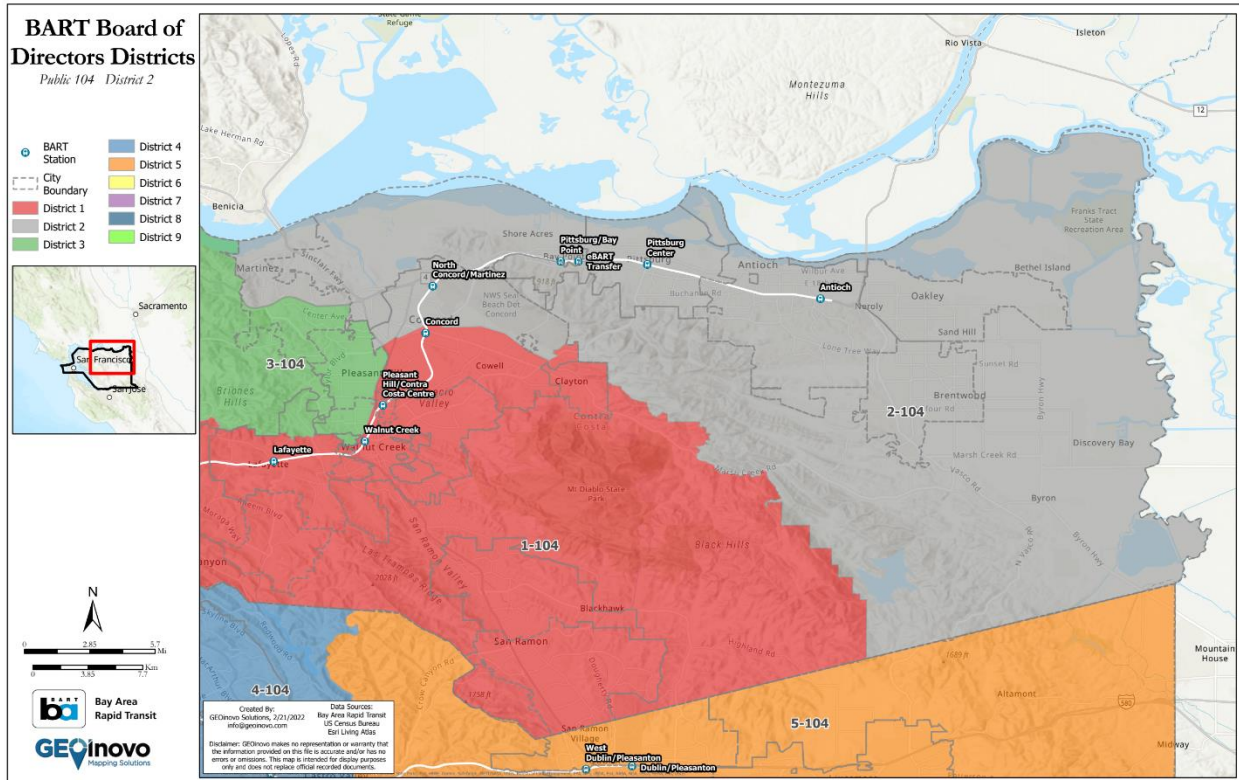
2.1.2. Population Changes to District 1

The following table was taken from file “BART_PopulationShift_Pub104-104_20220219”.

Pub 104, District 1: Pop. from Current Districts	Total Population	Percent Population
Total	412,671	100.0%
District 1	312,783	75.8%
District 2	46,393	11.2%
District 3	53,495	13.0%

Figure 2 District 1 maintains 75.8% of the current population, takes 11.2% from the current District 2, and 13.0% from District 3.

2.2. DISTRICT 2



District 2 is in Contra Costa County and includes the City of Pittsburg, the City of Antioch, the City of Brentwood, the City of Oakley, the Northeastern part of the City of Concord including NWS Seal Beach Det Concord, and the Northern part of the City of Martinez including the unincorporated neighborhoods of Mountain View and Vine Hill.

BART Stations included in District 2:

- Concord (shared with District 1)
- North Concord/Martinez
- Pittsburg/Bay Point
- Antioch
- Pittsburg Center
- eBART Transfer
- Walnut Creek (shared with District 3)

2.2.1. CVAP Population Changes to District 2

The following table was taken from file “BART_CVAPShift_Pub102-104_20220219”.

Pub 104, District 2: Pop. from Current Districts	Total Population	Percent Population
Total	263,970	100.0%
District 1	23,240	8.8%
District 2	240,730	91.2%

Figure 3 District 2 maintains 91.2% of the current CVAP population and takes 8.8% from the current District 1.

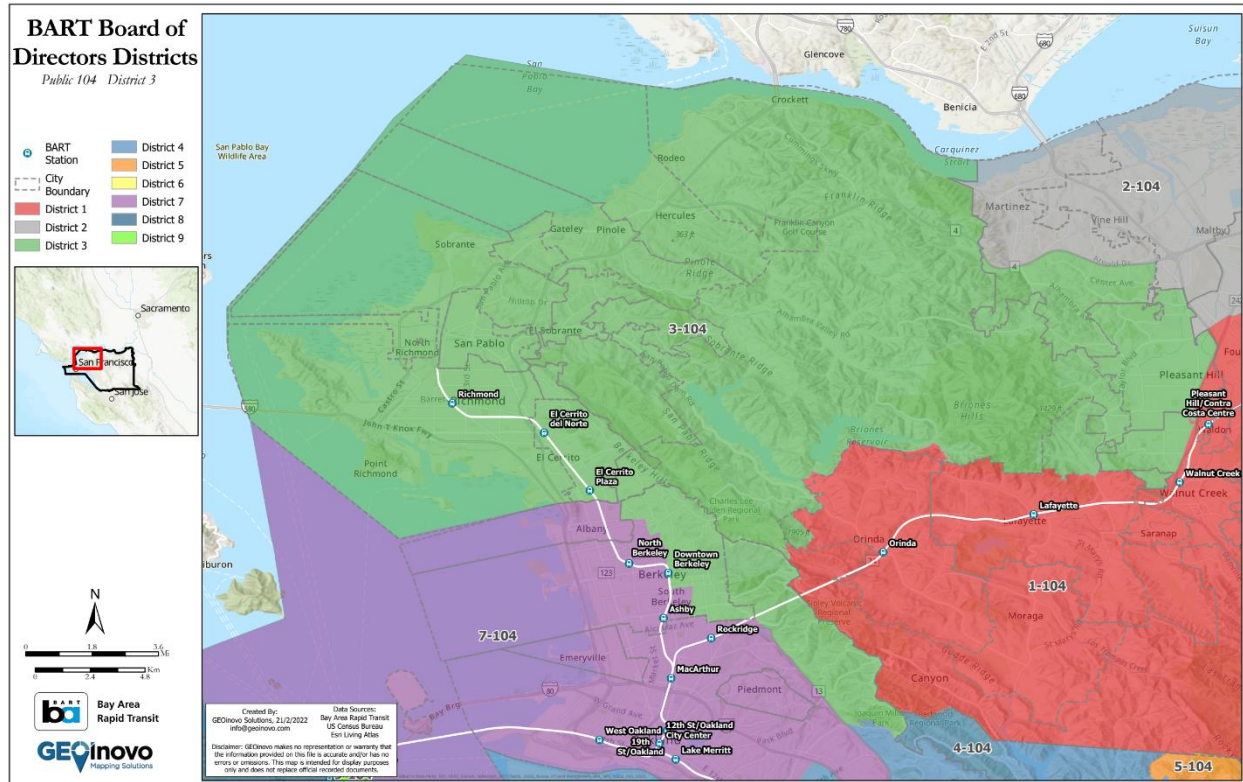
2.2.2. Population Changes to District 2

The following table was taken from file “BART_PopulationShift_Pub104-104_20220219”.

Pub 104, District 2: Pop. from Current Districts	Total Population	Percent Population
Total	413,568	100.0%
District 1	31,966	7.7%
District 2	381,602	92.3%

Figure 4 District 2 maintains 92.3% of the current population and takes 7.7% from the current District 1.

2.3. DISTRICT 3



District 3 is in both Contra Costa and Alameda Counties and includes the City of Hercules, the City of Pinole, the City of San Pablo, the City of Richmond, the City of El Cerrito, the Eastern part of the City of Berkeley including the University of California Berkeley, the City of Oakland East of Route 13, the Southern part of the City of Martinez, Pleasant Hill West of Route 680, the Reliez Valley, and unincorporated parts of Contra Costa County including North Richmond and El Sobrante.

BART Stations included in District 3:

- Richmond
- El Cerrito del Norte
- El Cerrito Plaza
- Downtown Berkeley (shared with District 7)
- Walnut Creek (shared with District 1)
- Pleasant Hill/Contra Costa Centre (shared with District 1)
- Rockridge (shared with District 7)

2.3.1. CVAP Population Changes to District 3

The following table was taken from file “BART_CVAPShift_Pub102-104_20220219”.

Pub 104, District 3: Pop. from Current Districts	Total Population	Percent Population
Total	275,861	100.0%
District 1	50,135	18.2%
District 3	75,323	27.3%
District 7	150,403	54.5%

Figure 5 District 3 maintains 27.3% of the current CVAP population and takes 54.5% from the current District 7, and 18.2% from the current District 1.

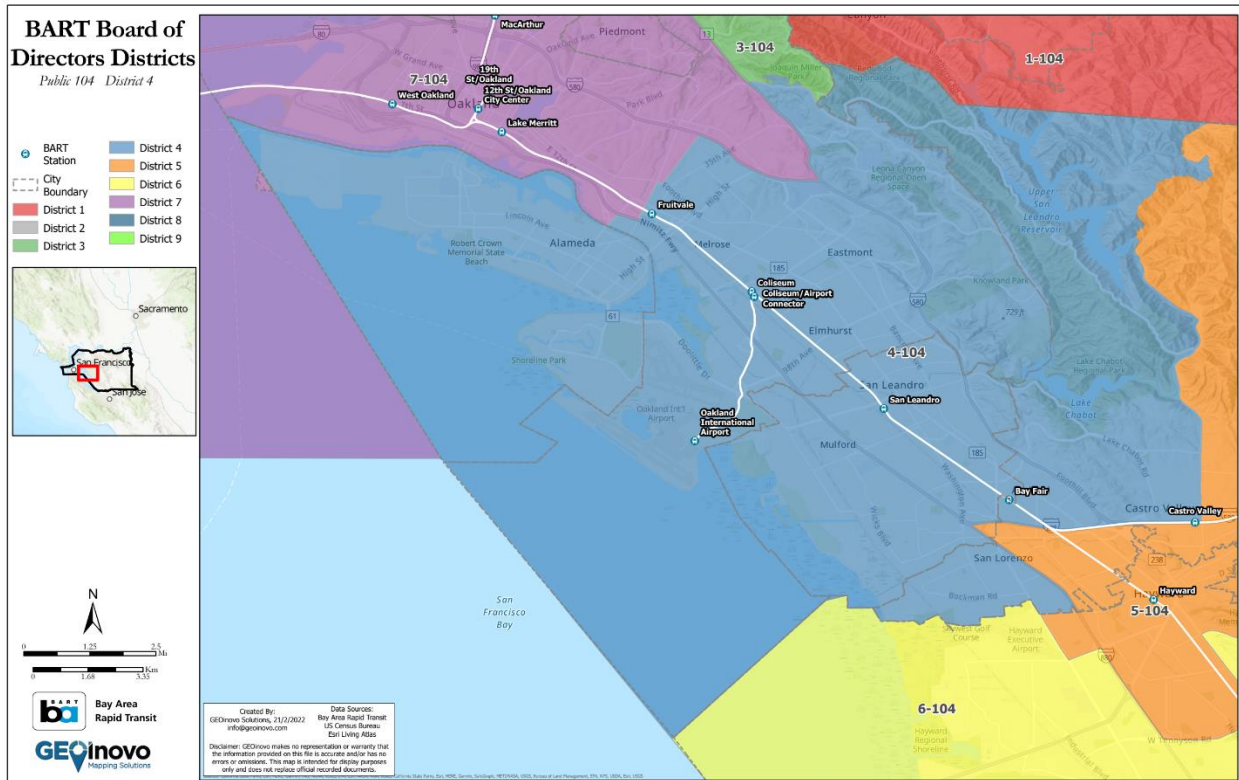
2.3.2. Population Changes to District 3

The following table was taken from file “BART_PopulationShift_Pub104-104_20220219”.

Pub 104, District 3: Pop. from Current Districts	Total Population	Percent Population
Total	419,356	100.0%
District 1	66,735	15.9%
District 3	102,417	24.4%
District 7	250,204	59.7%

Figure 6 District 3 maintains 24.4% of the current population and takes 59.7% from the current District 7, and 15.9% from the current District 1.

2.4. DISTRICT 4



District 4 is in Alameda County and includes the City of Alameda, the City of San Leandro except for a small portion by the Routes 880 and 238 interchange, Ashland, Castro Valley, Upper San Leandro Reservoir, and the Oakland neighborhoods of Elmhurst, Eastmont, and Melrose. Other points of interest in District 4 include Oakland International Airport, Monarch Bay Gold Club, and Mills College.

BART Stations included in District 4:

- Fruitvale (shared with District 7)
- Coliseum
- Coliseum/Airport Connector
- Oakland International Airport
- San Leandro
- Bay Fair (shared with District 5)
- Castro Valley (shared with District 5)

2.4.1. CVAP Population Changes to District 4

The following table was taken from file “BART_CVAPShift_Pub102-104_20220219”.

Pub 104, District 4: Pop. from Current Districts	Total Population	Percent Population
Total	263,984	100.0%
District 3	84,822	32.1%
District 4	158,306	60.0%
District 5	20,856	7.9%

Figure 7 District 4 maintains 60.0% of the current CVAP population, takes 32.1% from the current District 3 and 7.9% from the current District 5.

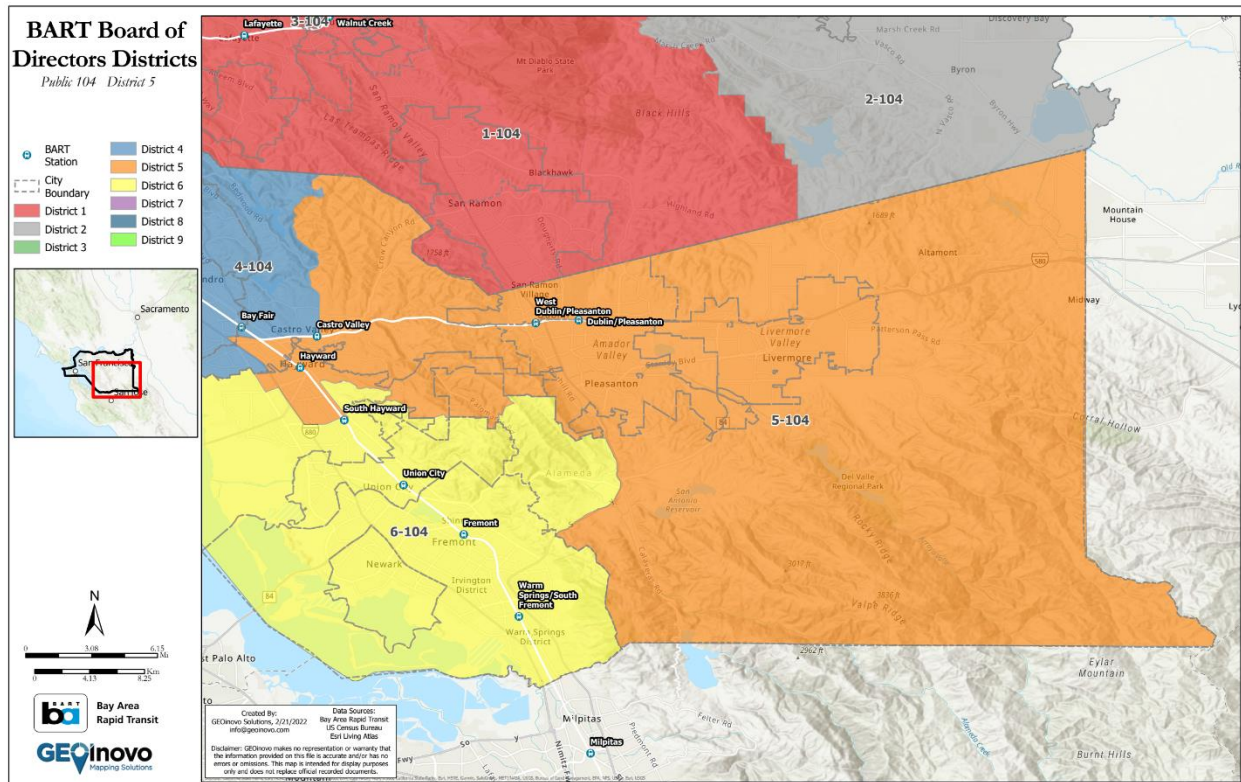
2.4.2. Population Changes to District 4

The following table was taken from file “BART_PopulationShift_Pub104-104_20220219”.

Pub 104, District 4: Pop. from Current Districts	Total Population	Percent Population
Total	419,262	100.0%
District 3	128,804	30.7%
District 4	259,702	61.9%
District 5	30,756	7.3%

Figure 8 District 4 maintains 61.9% of the current population, takes 30.7% from the current District 3, and 7.3% from District 5.

2.5. DISTRICT 5



District 5 is in Alameda County and includes the West of the City of Hayward including the populated areas bounded by Highway 880 to the west, Highway 238 to the east, and W Tennyson Rd to the south. Major places and landmarks in this area include Fairview, Sorensen, Don Castro Regional Recreation Area, and a residential development to the northwest of TPC Stonebrae Country Club. District 5 also includes the City of Pleasanton, the City of Livermore, the City of Dublin, and rural areas of east Alameda County.

BART Stations included in District 5:

- Hayward
- Bay Fair (shared with District 4)
- South Hayward (shared with District 6)
- Castro Valley (shared with District 4)
- West Dublin/Pleasanton
- Dublin/Pleasanton

2.5.1. CVAP Population Changes to District 5

The following table was taken from file “BART_CVAPShift_Pub102-104_20220219”.

Pub 104, District 5: Pop. from Current Districts	Total Population	Percent Population
Total	246,007	100.0%
District 3	12,164	4.9%
District 5	233,836	95.1%
District 6	7	0.0%

Figure 9 District 5 maintains 95.1% of the current CVAP population, takes 4.9% from the current District 3, and 0.0% from the current District 6 (7 people).

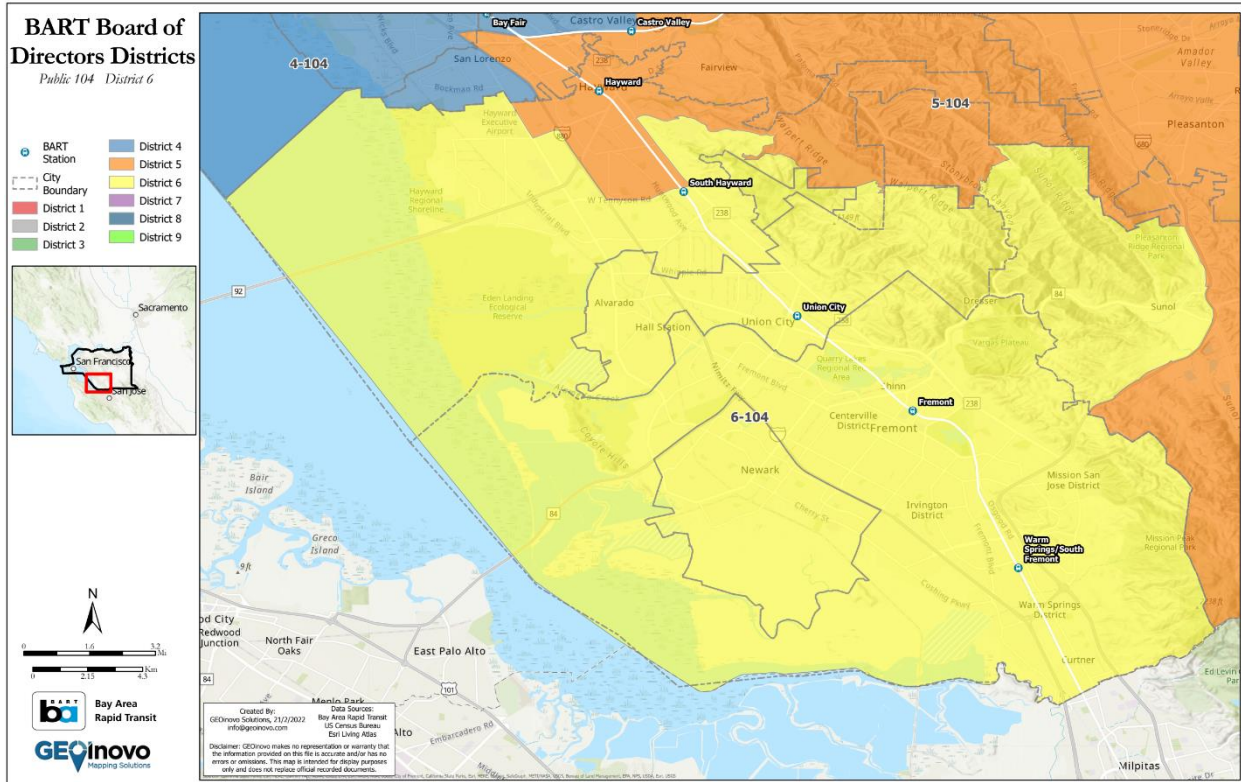
2.5.2. Population Changes to District 5

The following table was taken from file “BART_PopulationShift_Pub104-104_20220219”.

Pub 104, District 5: Pop. from Current Districts	Total Population	Percent Population
Total	402,898	100.0%
District 3	20,730	5.1%
District 5	382,155	94.9%
District 6	13	0.0%

Figure 10 District 5 maintains 94.9% of the current population, takes 5.1% from the current District 3, and 0.0% from the current District 6 (13 people).

2.6. DISTRICT 6



District 6 is in Alameda County and includes the City of Fremont, Union City, the City of Newark, and the Southwestern part of the City of Hayward including the Hayward Regional Shoreline and Hayward Executive Airport. Major landmarks include Eden Landing Ecological Reserve and the Northwest area of Mission Peak Regional Park.

BART Stations included in District 6:

- South Hayward (shared with District 5)
- Union City
- Fremont
- Warm Springs/South Fremont

2.6.1. CVAP Population Changes to District 6

The following table was taken from file “BART_CVAPShift_Pub102-104_20220219”.

Pub 104, District 6: Pop. from Current Districts	Total Population	Percent Population
Total	262,529	100.0%
District 5	15,421	5.9%
District 6	247,108	94.1%

Figure 11 District 6 maintains 94.1% of the current CVAP population and takes 5.9% from the current District 5.

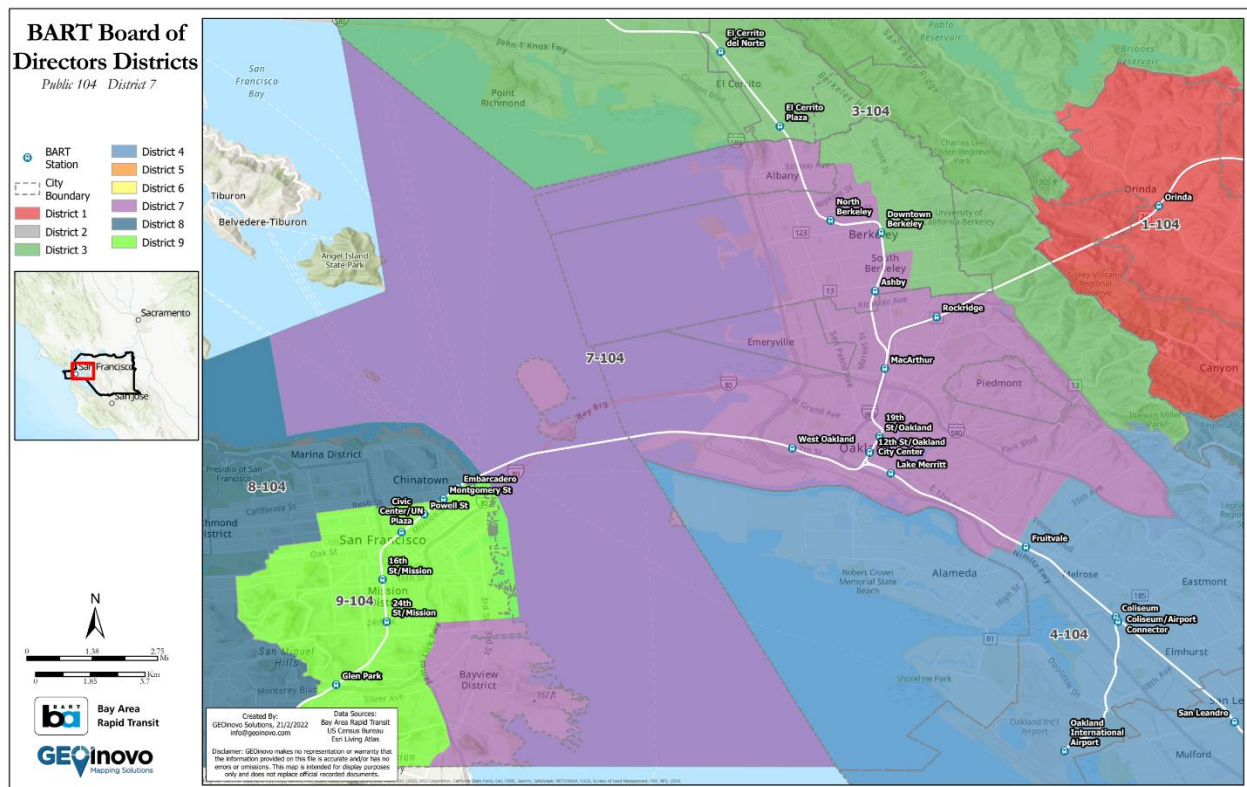
2.6.2. Population Changes to District 6

The following table was taken from file “BART_PopulationShift_Pub104-104_20220219”.

Pub 104, District 6: Pop. from Current Districts	Total Population	Percent Population
Total	422,868	100.0%
District 5	23,833	5.6%
District 6	399,035	94.4%

Figure 12 District 6 maintains 94.4% of the current population and takes 5.6% from the current District 5.

2.7. DISTRICT 7



District 7 is in Alameda and San Francisco Counties and includes the Northern portion of Oakland including Melrose, The City of Emeryville, and the City of Piedmont. This District includes Treasure Island and the Bayview District of San Francisco. Places of interest in District 7 include Joaquin Miller Park, Lakeside Park, and Claremont Canyon Regional Preserve.

BART Stations included in District 7:

- El Cerrito Plaza (shared with District 3)
- Downtown Berkeley (shared with District 3)
- North Berkeley
- West Oakland

- 12th St/Oakland City Center
- Lake Merritt
- MacArthur
- Rockridge (shared with District 3)
- 19th St/Oakland
- Ashby
- Fruitvale (shared with District 4)

2.7.1. CVAP Population Changes to District 7

The following table was taken from file “BART_CVAPShift_Pub102-104_20220219”.

Pub 104, District 7: Pop. from Current Districts	Total Population	Percent Population
Total	277,541	100.0%
District 3	73,273	26.4%
District 4	106,580	38.4%
District 7	95,787	34.5%
District 8	1,378	0.5%
District 9	523	0.2%

Figure 13 District 7 maintains 34.5% of the current CVAP population, takes 38.4% from the current District 4, 26.4% from District 3, 0.5% from District 8, and 0.2% from the current District 9.

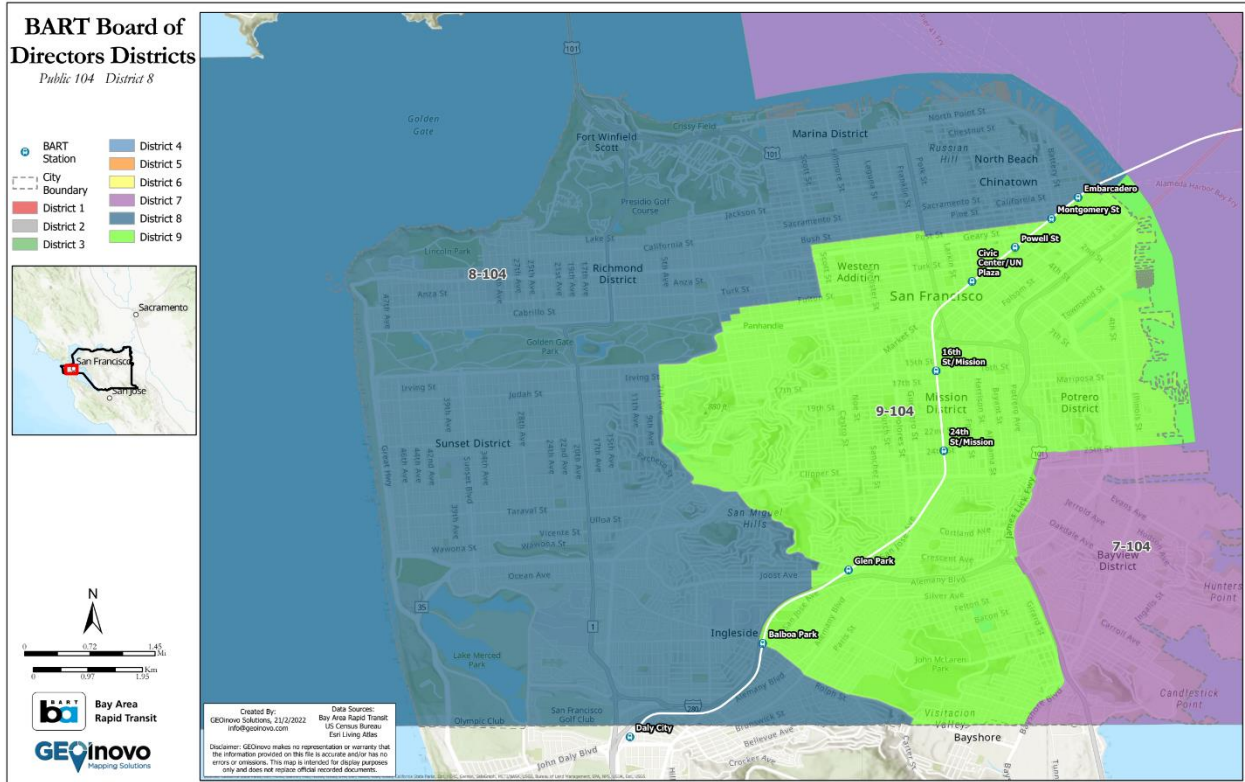
2.7.2. Population Changes to District 7

The following table was taken from file “BART_PopulationShift_Pub104-104_20220219”.

Pub 104, District 7: Pop. from Current Districts	Total Population	Percent Population
Total	407,461	100.0%
District 3	97,221	23.9%
District 4	158,403	38.9%
District 7	149,004	36.6%
District 8	1,888	0.5%
District 9	945	0.2%

Figure 14 District 7 maintains 36.6% of the current population, takes 38.9% from the current District 4, 23.9% from the current District 3, 0.5% from District 8, and 0.2% from the current District 9.

2.8. DISTRICT 8



District 8 in San Francisco County includes the following neighborhoods and points of interest in San Francisco: North Beach, Chinatown, Marina District, Fort Winfield Scott, Richmond District, Sunset District, Ingleside, the Golden Gate Bridge, and the world-famous Lombard St.

BART Stations included in District 8:

- Balboa Park (shared with District 9)
- Embarcadero (shared with District 9)
- Montgomery St (shared with District 9)
- Powell St (shared with District 9)
- Glen Park (shared with District 9)

2.8.1. CVAP Population Changes to District 8

The following table was taken from file “BART_CVAPShift_Pub102-104_20220219”.

Pub 104, District 8: Pop. from Current Districts	Total Population	Percent Population
Total	334,634	100.0%
District 8	290,176	86.7%
District 9	44,458	13.3%

Figure 15 District 8 maintains 86.7% of the current CVAP population and takes 13.3% from the current District 9.

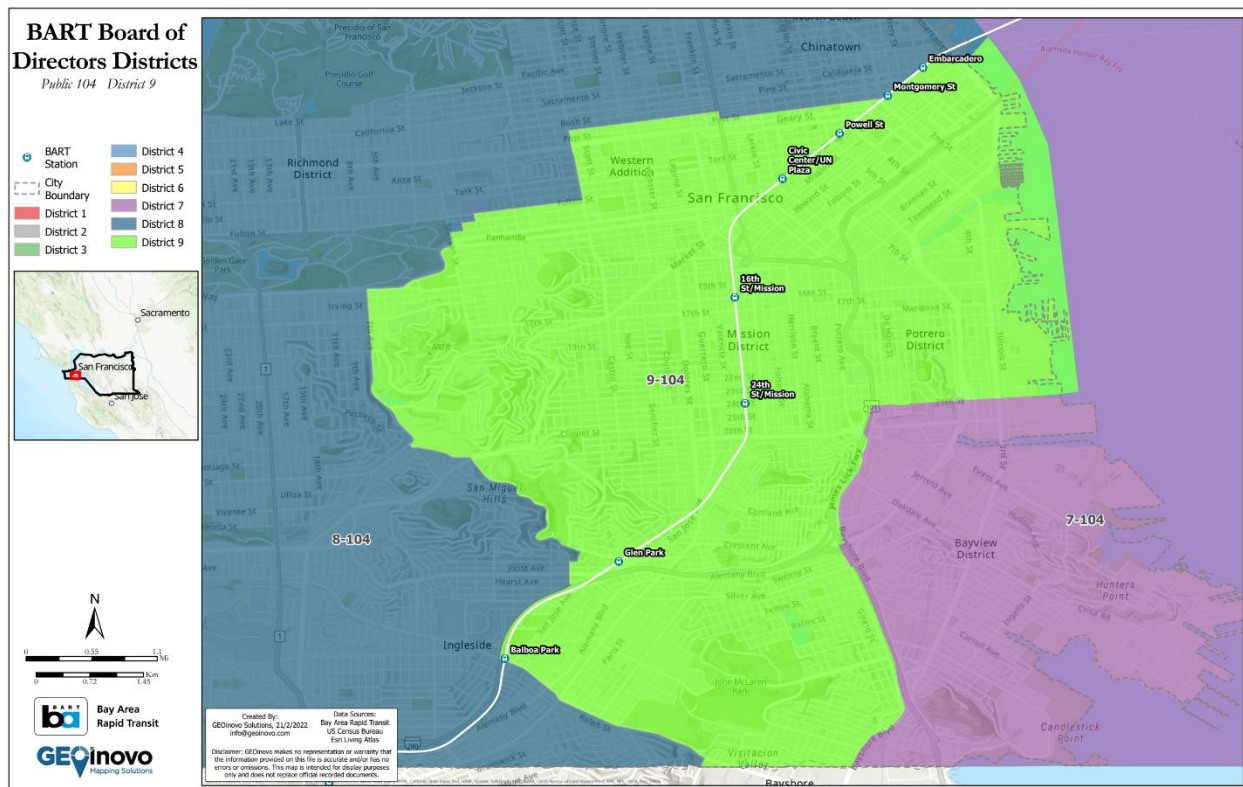
2.8.2. Population Changes to District 8

The following table was taken from file “BART_PopulationShift_Pub104-104_20220219”.

Pub 104, District 8: Pop. from Current Districts	Total Population	Percent Population
Total	419,871	100.0%
District 8	364,260	86.8%
District 9	55,611	13.2%

Figure 16 District 8 maintains 86.8% of the current population and takes 13.2% from the current District 9.

2.9. DISTRICT 9



District 9 is in San Francisco County includes the following neighborhoods and points of interest in San Francisco: Western Addition, Twin Peaks, Diamond Heights, Glen Canyon Park, St Mary’s Recreation Center, Bernal Heights Park, Union Square, Mission District, Potrero District, Pier 50, the Salesforce Transit Center, and John McLaren Park.

BART Stations included in District 9:

- Embarcadero (shared with District 8)
- Montgomery St (shared with District 8)
- Powell St (shared with District 8)
- Civic Center/UN Plaza
- 16th St/Mission

- 24th St/Mission
- Glen Park (shared with District 8)
- Balboa Park (shared with District 8)

2.9.1. CVAP Population Changes to District 9

The following table was taken from file “BART_CVAPShift_Pub102-104_20220219”.

Pub 104, District 9: Pop. from Current Districts	Total Population	Percent Population
Total	289,999	100.0%
District 7	24,662	8.5%
District 8	12,024	4.1%
District 9	253,313	87.3%

Figure 17 District 9 maintains 87.3% of the current CVAP population, takes 8.5%% from the current District 7, and 4.1% from the current District 8.

2.9.2. Population Changes to District 9

The following table was taken from file “BART_PopulationShift_Pub104-104_20220219”.

Pub 104, District 9: Pop. from Current Districts	Total Population	Percent Population
Total	408,575	100.0%
District 7	43,432	10.6%
District 8	17,542	4.3%
District 9	347,601	85.1%

Figure 18 District 9 maintains 85.1% of the current population, takes 10.6% from the current District 7, and 4.3% from District 8.