

Surveillance Impact Report

BART Closed Circuit Television (CCTV)

Balboa Park Station East Side
Improvement & Plaza

BART Office of Infrastructure Delivery

ME-BCCTV-SIR-05

21 Day BART Board Notice – February 21, 2024

15 Day Public Notice – February 28, 2024

BART Board Meeting – March 14, 2024



Anticipated Surveillance Impact Report – BART Closed Circuit Television (CCTV)

Introduction

BART project I I OG-140 Balboa Park Station Passenger Drop-Off + Plaza Upgrade was to complement the adjacent Kapuso Upper Yard Transit Oriented Development (TOD) project at the corner of San Jose and Geneva Avenues in San Francisco.

The new plaza area has a passenger loading zone and terraced planters that provide a transition between the BART station entrance and the housing development, which has an entrance at a lower elevation.

The original plaza design included the installation of one post with BART Closed Circuit Television (CCTV) cameras, which are the subject of this Impact Report.

A. Information describing the proposed surveillance technology and how it generally works.

CCTV is a TV system in which signals are not publicly distributed but are monitored, primarily for surveillance and security purposes. CCTV relies on strategic placement of cameras, and observation of the camera's input on monitors. Because the cameras communicate with monitors and/or video recorders across private communication links, they gain the designation "closed-circuit" to indicate that access to their content is limited by design only to those able to see it.

The various types of cameras that are employed for public surveillance purposes include visible and semi-visible, each having its own purpose. Visible cameras are intentionally designed to be visible to the public and for the most part, one can easily detect what is being recorded by the direction of the camera. Semi-visible cameras have become increasingly more common. These cameras have a dome-shaped covering that prevents the public from identifying the direction the camera is facing. For crime prevention efforts, this type of camera is more effective for deterrence purposes because would-be offenders are unable to determine whether they are being recorded and may therefore refrain from criminal activity due to fear of apprehension.

Sample Image of Semi-Visible CCTV camera



B. Information on the proposed purpose(s) for the surveillance technology.

The use of cameras based on CCTV technology has proven effective in increasing the confidence of the community in public transport and improving the protection of patrons, employees, railcars, and critical

Anticipated Surveillance Impact Report – BART Closed Circuit Television (CCTV)

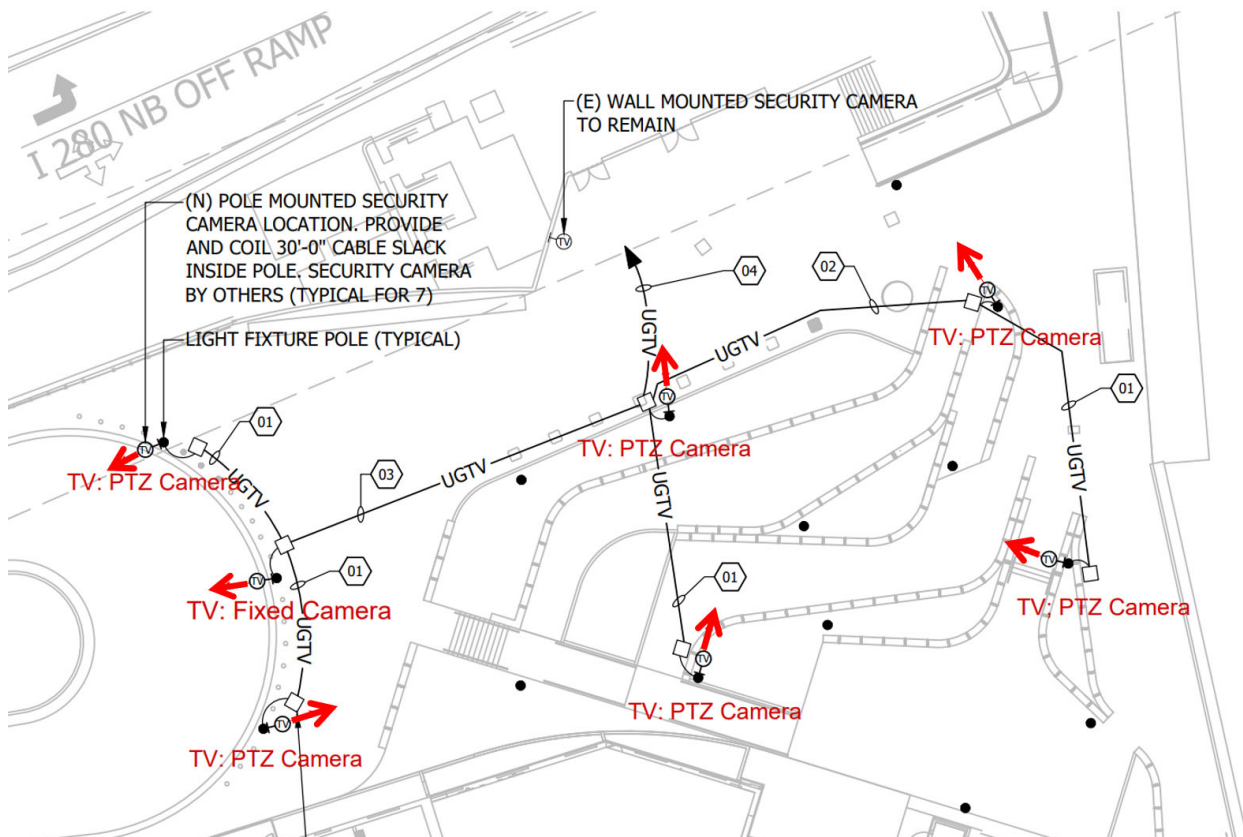
infrastructure. The CCTV system captures and records video images of Passengers. It serves the following key purposes:

- Reduces the fear of crime and reassures the public and employees.
- Prevents, deters and detects crime, damage of infrastructure and vehicles, public disorder, unlawful behavior and inappropriate conduct.
- Acts as a risk management tool against fare evasion and as a defense against fraudulent claims, particularly for individuals alleging injury during accidents.
- Aids in dispute mediation, complaint resolution, accident investigation, employee monitoring, etc.
- Used to monitor, identify, apprehend and prosecute offenders for criminal offences, criminal damage, public disorder, roadway accidents and harassment.
- Used to investigate complaints or offences and provide evidence upon which to take criminal, civil, and/or disciplinary actions.
- Collection of passenger and transportation data to monitor and support network planning objectives and initiatives.

This surveillance technology within the BART system is a vital resource for police criminal investigations. CCTV footage provides essential direct investigation evidence of crimes. This footage has led to the identification and capture of multiple perpetrators. BART Police detectives routinely use surveillance videos to solve a variety of crimes against persons and property.

C. If applicable, the general location(s), it may be deployed.

- M80 - Balboa Park



Anticipated Surveillance Impact Report – BART Closed Circuit Television (CCTV)

D. Crime statistics for any location(s), if the equipment is used to deter or detect crime.

Crime statistics for Balboa Park station in FY23 are as follows:

Type of Crime	Number of Incidents
Robbery	5
Aggravated Assault	3
All Theft	8
Vehicle Break In	1
Electronic Theft	2
Electronic Robbery	2
Bicycle Theft	2
Battery	6
Total	29

The CCTV System is intended as a District wide security system having amongst other functions the purpose of prevention, deterrence, and detection of crime. The system will target crimes as measured by the BART Police Performance Measurements monthly report and the reported data from the BART official monthly FBI Uniform Crime Reporting (UCR) program.

E. An assessment identifying any potential impact on privacy rights and discussing any plans to safeguard the rights of the public.

CCTV cameras will be used in strict compliance with their Use Policy adopted by the Board in 2018.

BART recognizes that all people have an inalienable right to privacy and is committed to protecting and safeguarding this right. Through the placement of these CCTV cameras, no still or video footage or audio of persons will be captured in areas where there is an expectation of privacy, such as restrooms; and will not be used to harass, intimidate, or discriminate against any individual or group. BART's use of CCTV cameras will not include facial recognition or other biometric data collection.

Authorized Use: The CCTV security cameras and the images/video/audio they capture will be used in a lawful manner for BART business purposes only, including the uses identified in Section I of the CCTV Surveillance Use Policy, and not for personal use or other non-BART uses.

Data Access: Access to images and video footage will be restricted to the designated BART departments and staff.

Data Protection: BART will maintain data collected by CCTV System in a secure location where physical access is limited to authorized individuals and includes physical access protections and/or firewall protections from external intrusion.

Data Retention: BART will retain/stored data collected from the CCTV system per BART Police Department Policy 707. Relatively short retention periods will avoid the unnecessary over-accumulation of data.

Public Access: BART will grant Public access to data collected from the CCTV system per BART Police Department Policy 707. All video images/data will be used for District operations, law enforcement or public safety purposes only;

Anticipated Surveillance Impact Report – BART Closed Circuit Television (CCTV)

except as required by law, subpoenas or other court process, such data will not otherwise be disclosed/released by the BART Police Department without the consent of the Chief of Police.

Third Party Data Sharing: BART will share data with third parties as follows:

- In response to subpoenas issued by a defendant
- Pursuant to a Court Order
- To assist criminal Investigations by Law Enforcement Agencies
- In adherence to the District's Safe Transit Policy.

Specifically for this project, BART will install 6 PTZ cameras and one fixed camera. Cameras will be aimed as indicated by the arrows in the figure in Section C. Cameras will not be aimed to capture footage of persons in the housing across the street.

F. The fiscal costs for the surveillance technology, including initial purchase, personnel and other ongoing costs, and any current or potential sources of funding.

Initial Purchase and Installation Cost

The estimated total for purchase and installation of 7 cameras is \$33,825.00.

Ongoing Costs

The ongoing costs associated with the deployment of the CCTV System are for normal preventative and corrective maintenance.

According to the Annual Surveillance Report, in FY23 BART spent \$1,838,400 operating and maintaining 3,281 cameras, or an average of \$560/camera. Since the cameras being installed as part of this project will be brand new, the cost to operate and maintain them should be lower than \$560 / camera, i.e. less than \$560 x 7 of cameras = \$3,920 / year.

The anticipated lifespan of the system is about Ten (10) years. However, with proper maintenance and absence of vandalism, staff anticipates the useful operational lifespan of the system could be extended.

Sources of Funding

- Affordable Housing and Sustainable Communities (AHSC) grant
- Infill Infrastructure Grant (IIG) Program
- Measure RR funds
- Prop K funds
- Operating Funds

G. Whether use or maintenance of the technology will require data gathered by the technology to be handled or stored by a third-party vendor on an ongoing basis

Third party vendor support requires the use of log files and sample image data to be collected for analysis of errors and system malfunctions. The data is not stored after maintenance is complete.

H. A summary of alternative methods (whether involving the use of a new technology or not) considered before deciding to use the proposed surveillance technology, including the costs and benefits associated with each alternative and an explanation of the reasons why each alternative is inadequate or undesirable.

BART examined two types of technology in the implementation of the Closed-Circuit Television System, legacy Analog and current Digital IP Based technology. The benefits and disadvantages are:

Benefits of Analog Cameras:

- Cost
- Larger pool of installers and vendors
- Simplicity
- Advancements in image quality

Disadvantages of Analog Cameras:

- Image quality is significant less than Digital IP Based Technology
- Less coverage
- More Cables
- No Encryption

Benefits of IP Cameras (PTZ and Fixed):

- Multiple image sensors in one unit.
- Decrease in cost
- Ease of Installation
- Image Resolution
- Intelligence and analytics
- Security -video is encrypted
- Less equipment
- Open Platforms

Disadvantages of Digital IP Based Technology (PTZ and Fixed):

- Cost of initial set-up
- Storage
- Training for new technologies

Anticipated Surveillance Impact Report – BART Closed Circuit Television (CCTV)

Disadvantages of No Camera Option

- BART's loss of the intended purpose and benefits of the surveillance technology.

I. A summary of the experience, if any is known, other law enforcement entities have had with the proposed technology, including information about the effectiveness, any known adverse information about the technology such as unanticipated costs, failures, civil rights or civil liberties issues.

BART's own prior experience with the existing technology is described in detail in BART's 2023 Annual Surveillance Report.

BART uses CCTV technology for the following:

- Situational awareness for Transportation, Planning, and Operations Control Center personnel for managing stations and special events.
- Allowing BART personnel to avoid train-holds in situations that can be resolved remotely by CCTV, reducing delays in revenue service.
- Accident/incident investigations, mechanical failure investigations, and for California Public Utilities Commission (CPUC) compliance checks.
- Essential direct investigation evidence of violent crimes.
- Identification and capture of criminal perpetrators.

Effectiveness

In FY23, BART Police detectives produced 310 wanted person bulletins using CCTV images to attempt to identify persons involved in criminal activity.

Establishing a causal relationship between the occurrence of crime and the presence, or absence, of CCTV is difficult, but CCTV is an essential part of the safety and security strategy that customers and employees expect the District to provide as part of running a Tier-I mass transit system.

Failures & Unanticipated Costs

There were no significant CCTV equipment failures in FY23, and no unanticipated costs related to the use of the equipment.

Civil Rights & Civil Liberties

Access to the CCTV network is highly controlled, and BART has in place a detailed process for fielding requests for CCTV video from both internal and external entities. Copies of CCTV video are provided only in strict accordance with the District's Safe Transit Policy and Surveillance Use Policy.

In FY23 there were a total of 4,892 (non-train car) CCTV video requests by 39 entities (mostly law enforcement), of which 85% were BART PD Investigations. The other 15% were comprised of internal BART requests (non-PD), court subpoenas, California Public Records Act requests, and outside law enforcement requests.

An audit of 57 randomly selected cases showed no violations of the Surveillance Use Policy for the CCTV

Anticipated Surveillance Impact Report – BART Closed Circuit Television (CCTV)

system by the BART Police Department video recovery unit or District Personnel requesting access to specific videos.

In relation to CCTV cameras, in FY23, BART Customer Service received no complaints pertaining to privacy or civil liberty concerns or harm.