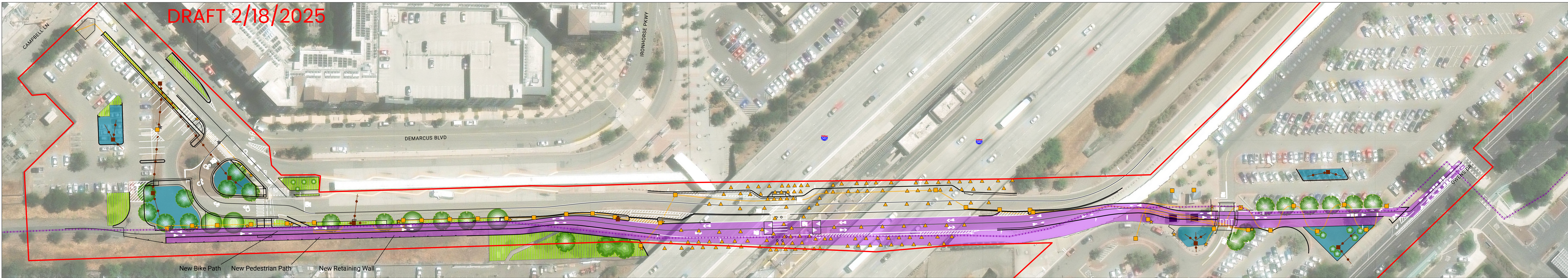


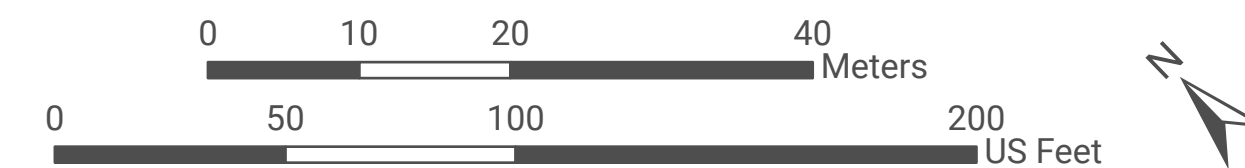
DRAFT 2/18/2025



New Bike Path
New Pedestrian Path
New Retaining Wall

- | | | | | |
|------------------|----------------------|-------------------------|----------------------|-------------------------------|
| — Curb | ■ Bioretention Basin | ▲ New Mounted Light | ■ Trees | ■ Footprint |
| ■ Drainage Inlet | ★ New Light | ■ New Light Box | ■ Landscaping | ■ City Boundary |
| — Storm Drain | ★ Remove Light | — New Underground Cable | ■ Demolition | ■ Iron Horse Trail (Existing) |
| | | | ■ New Retaining Wall | |

PROJECT FEATURES MAP
BART DUBLIN/PLEASANTON STATION ACCESS
IMPROVEMENTS - IRON HORSE TRAIL PROJECT
CITIES OF DUBLIN AND PLEASANTON
ALAMEDA COUNTY



Layer sources: HNTB 2025, Caltrans 2020, Maxar, Microsoft