

# Balboa Park

Appendix G

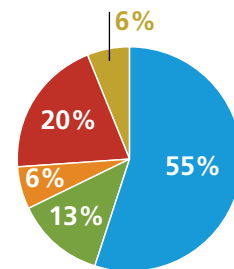
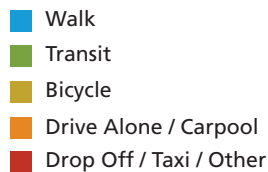


## Focus Station Area Action Plan

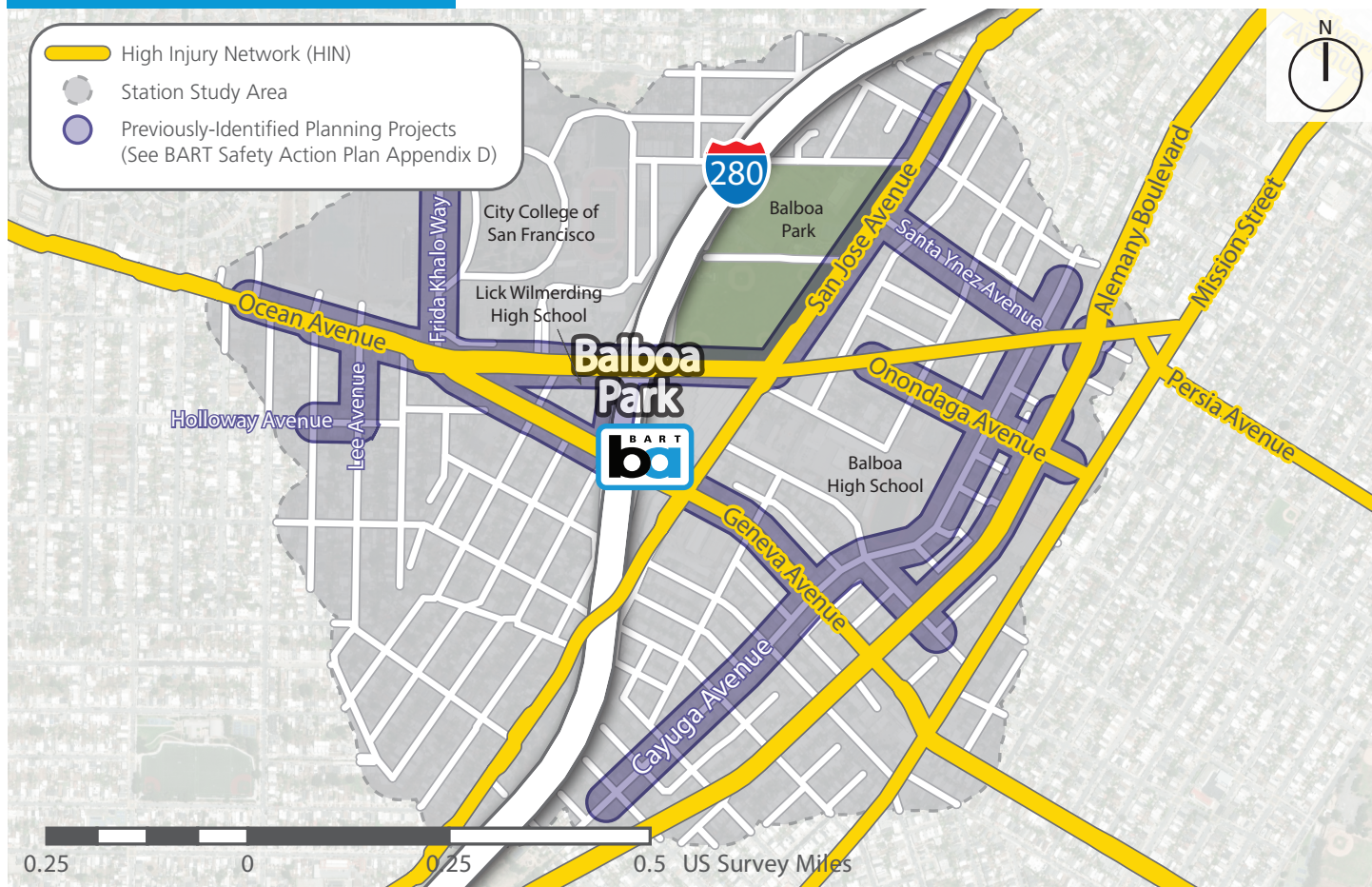
### Station at a Glance

**Station Access Type:** Urban

#### Access Mode Share



### Station Area Map



**Jurisdiction(s) with roads on HIN:** City and County of San Francisco, Caltrans

### Safety by the Numbers

5-year Collision Data: 2019-2023

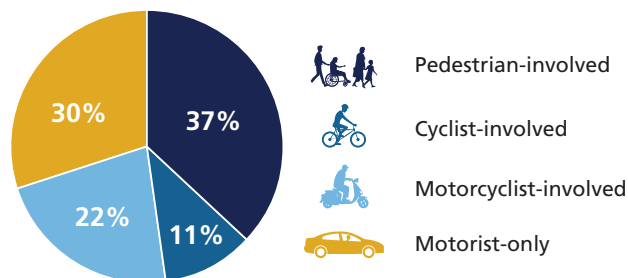
**30%** Percent of Station study area street miles on the HIN

**27** Number of people killed or severely injured (KSI)

**9%** Percent of crashes that resulted in KSI

### Killed/Severe Injury (KSI) Crashes

Total KSI: 27



## Focus Station Area Action Plan

### Key Corridors and Intersections



**Jurisdiction(s) with roads on HIN:** City and County of San Francisco, Caltrans

- 1** Ocean Avenue from I-280 to Cayuga Avenue
- 2** Geneva Avenue from Ocean Avenue to London Street
- 3** Ocean Avenue & Onondaga Avenue
- 4** Ocean Avenue & Cayuga Avenue
- 5** Geneva Avenue & Cayuga Avenue



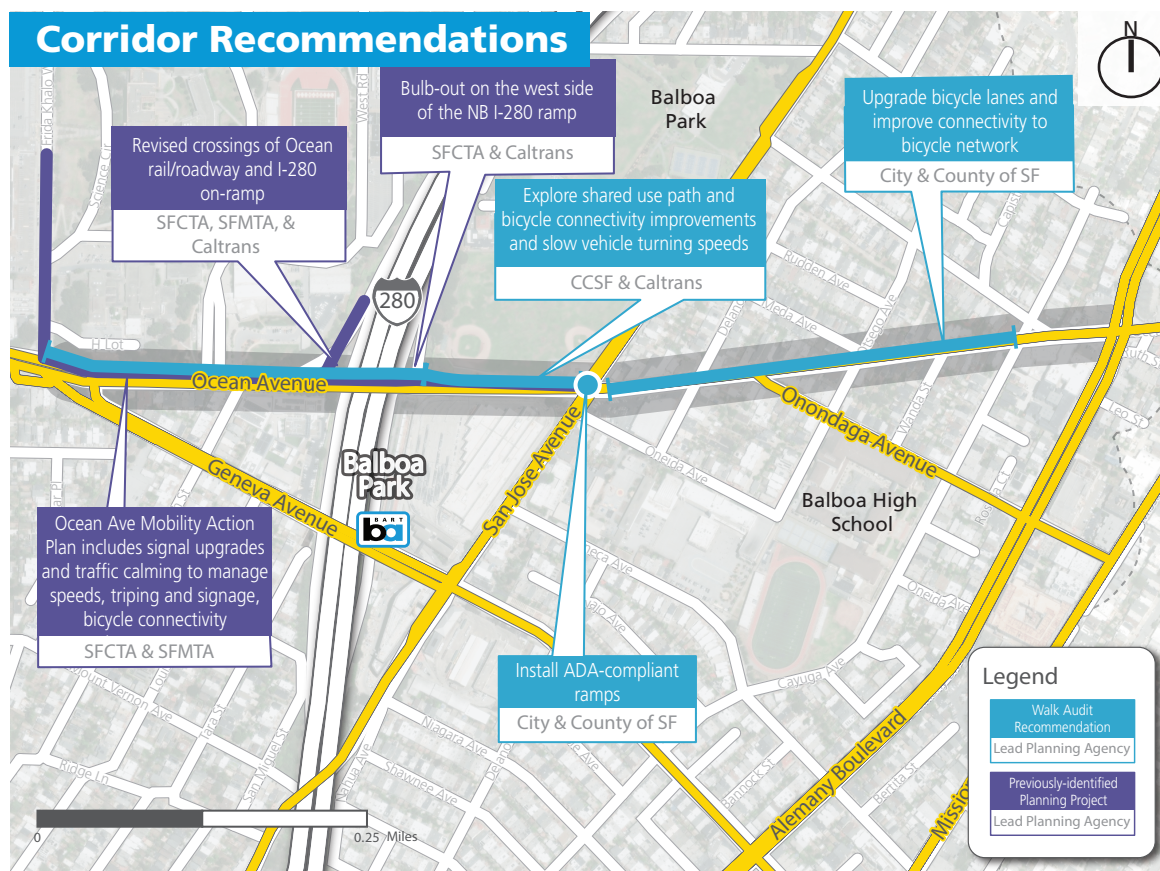
## Focus Station Area Action Plan

### 1 Ocean Avenue from I-280 to Cayuga Avenue

#### Corridor Context

- This east-west collector street has a high amount of multimodal activity: I-280 on- and off-ramps, BART station access, Muni routes K, 29 and 49, and a combination of shared/standard bikeways.
- Survey respondents reported safety concerns crossing on/off ramps on Ocean Ave and walking across Muni tracks to get to the BART station.
- There have been 60 collisions on this corridor from 2019 to 2023, with nearly half involving pedestrians and bicyclists. Risk factors on this corridor include lack of adequate lighting, uncontrolled intersection crossings, and proximity to bus stops on Ocean Ave.

#### Corridor Recommendations



#### Safety Benefits

##### FHWA Tier 1 Safety Countermeasures to Remove Severe Conflicts:

- Physically separated bicycle lanes provide more separation between bicyclists and vehicles to reduce chance for severe conflicts.
- ADA-compliant ramps provide access to separated walkways for all pedestrians.

##### FHWA Tier 2 Safety Countermeasures to Reduce Vehicle Speeds:

- Realigned roads and intersections reduce turn speeds and improve sightlines between vehicles, pedestrians, and bicyclists.

#### Estimated Cost

\$XXX,XXX - \$YYY,YYY

Estimate of capital costs

2025

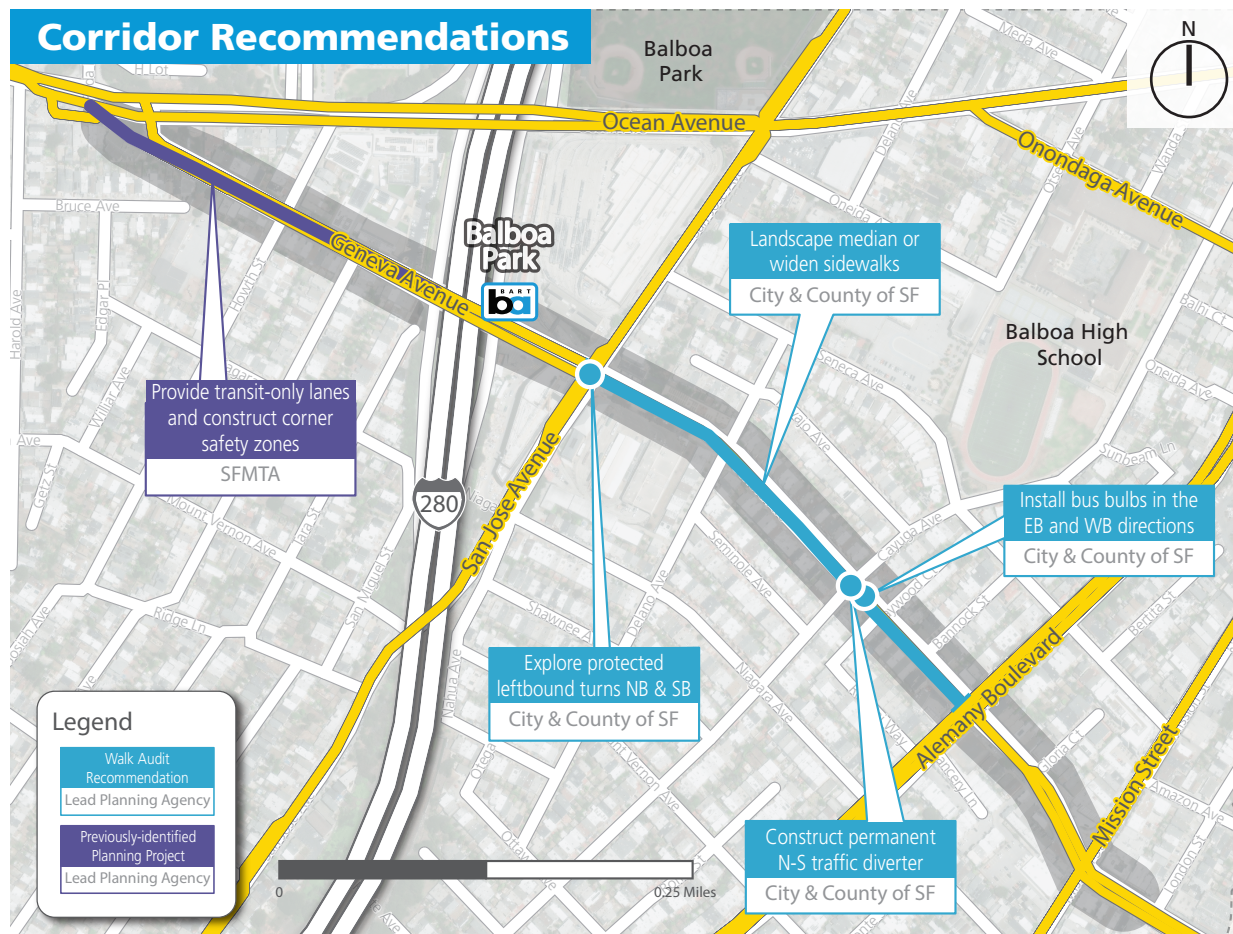
## Focus Station Area Action Plan

### 2 Geneva Avenue from Ocean Avenue to London Street

#### Corridor Context

- Geneva Ave connects the Excelsior and Crocker Amazon neighborhoods to Balboa Park Station. It serves as a major bus corridor (Muni routes 8, 9, and 54) and consists of four travel lanes, on-street parking, and shared-road bike markings near the station. It also provides on- and off-ramp access to I-280.
- Survey respondents reported near misses with cars crossing I-280 ramps on Geneva Ave when drivers are in a rush.
- This corridor segment recorded 81 collisions, of which 19 were pedestrian-related incidents, from 2019-2023. High-incident areas include the I-280 ramps, Cayuga Ave, and Mission St.

#### Corridor Recommendations



#### Safety Benefits

##### FHWA Tier 1 Safety Countermeasures to Remove Severe Conflicts:

- Bus bulbs reduce crossing distances and enable buses to service a stop without merging in and out of travel lanes.
- Medians reduce the risk of head-on collisions by physically separating opposing travel lanes.
- Traffic diverters reduce cut through traffic and conflict exposure.

##### FHWA Tier 2 Safety Countermeasures to Reduce Vehicle Speeds:

- Medians and bus bulbs reduce the width of the road, encouraging slower vehicle speeds.

##### FHWA Tier 3 Safety Countermeasures to Manage Conflicts in Time:

- Protected turns separate turning vehicle traffic from opposing movements of all modes.

#### Estimated Cost

\$XXX,XXX - \$YYY,YYY

Estimate of capital costs

2025



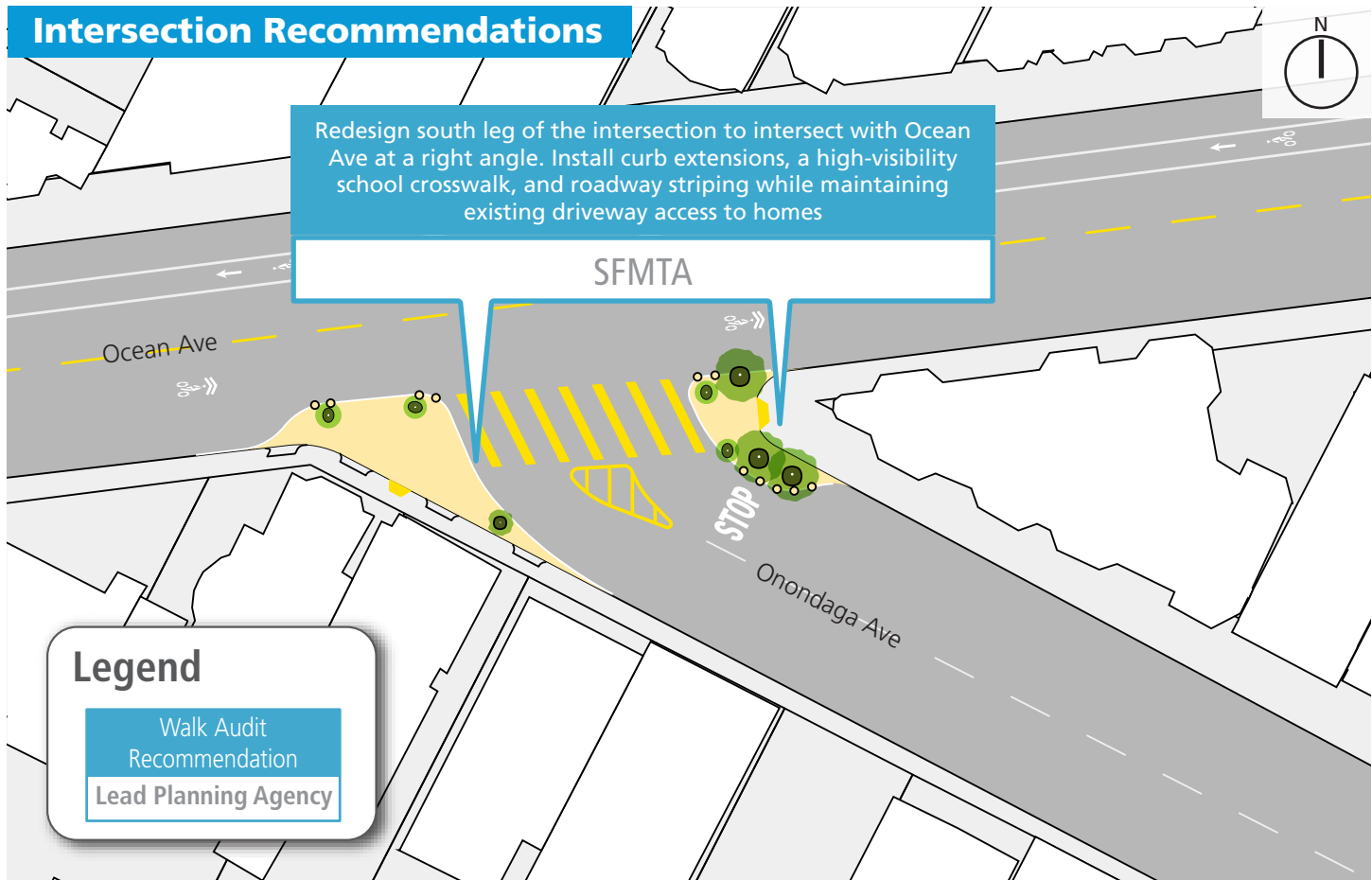
## Focus Station Area Action Plan

### 3 Ocean Avenue & Onondaga Avenue

#### Intersection Context

- Ocean Avenue and Onondaga Avenue is an intersection with a higher risk of collisions due to its geometry. The 45 degree angle encourages high speed turns from eastbound Ocean Ave, and visibility can be limited between motorists on both streets.
- Driveways located at the intersection and on-street parking also pose challenges to implementing improvements at this intersection.

#### Intersection Recommendations



#### Safety Benefits

##### FHWA Tier 1 Safety Countermeasures to Remove Severe Conflicts:

- Square up the intersection to reduce turn speeds and improve sightlines between vehicles, pedestrians, and bicyclists.

##### FHWA Tier 2 Safety Countermeasures to Reduce Vehicle Speeds:

- Bulb-outs reduce the width of the roadway and encourage drivers to reduce speed.

##### FHWA Tier 4 Safety Countermeasures to Increase Attentiveness and Awareness:

- High visibility crosswalks make crossing pedestrians more visible to drivers.

#### Estimated Cost

\$XXX,XXX - \$YYY,YYY

Estimate of capital costs

2025

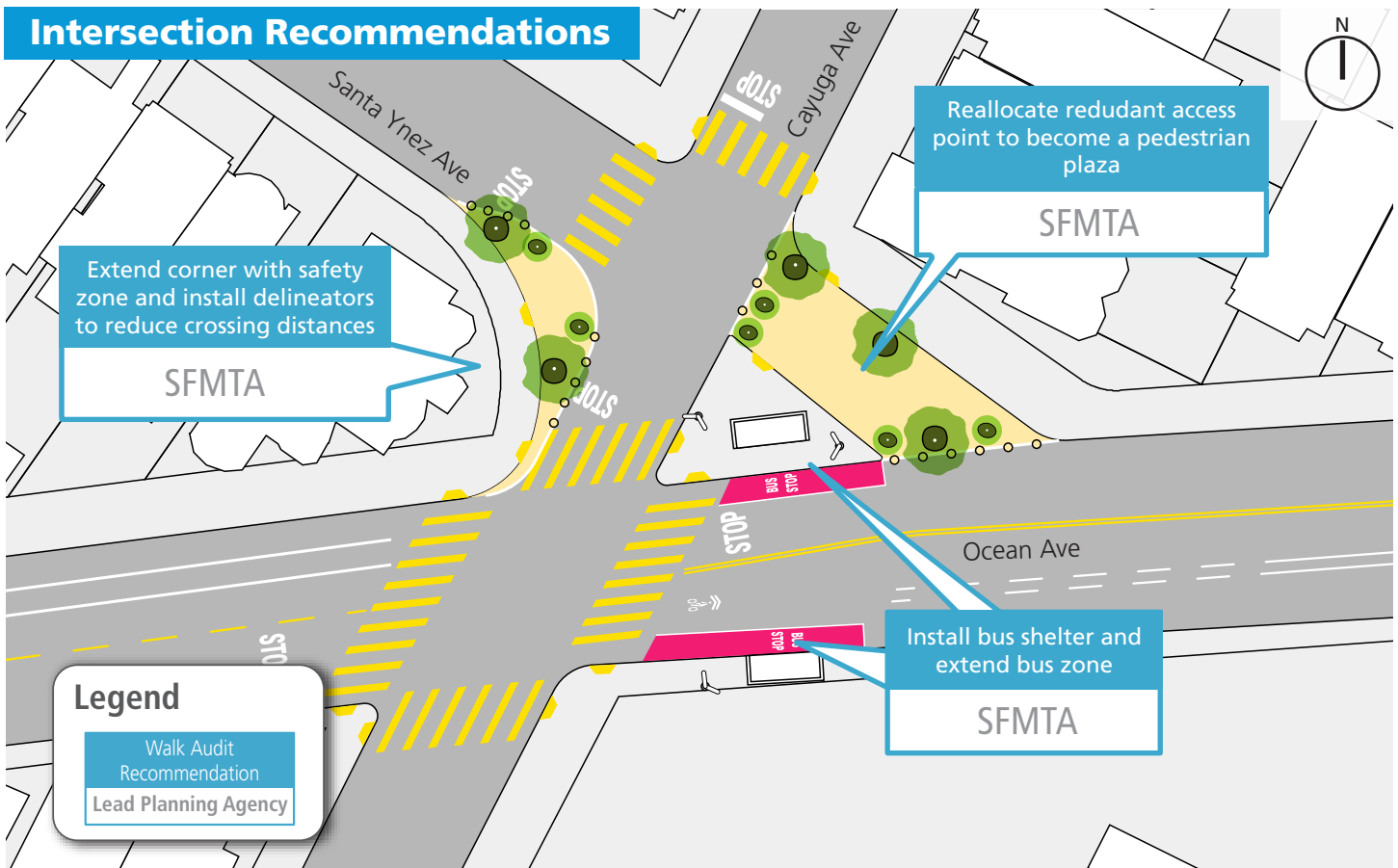
## Focus Station Area Action Plan

### 4 Ocean Avenue & Cayuga Avenue

#### Intersection Context

- The intersection of Santa Ynez Avenue / Cayuga Avenue / Ocean Avenue is currently designed to prioritize vehicle access. It features redundant access points and wide curb radii. These design elements create multiple conflict points and encourage high speeds, making pedestrian access less safe.
- Three crashes were recorded near this intersection from 2019 to 2023: two were vehicle-to-vehicle collisions, and one was a bike collision due to poor lighting.

#### Intersection Recommendations



#### Safety Benefits

##### FHWA Tier 1 Safety Countermeasures to Remove Severe Conflicts:

- Extending the curb reduces pedestrian crossing distance and exposure time.
- Closing a redundant access point to vehicles consolidates opposing movements to fewer locations and reduces the likelihood of a collision.

##### FHWA Tier 2 Safety Countermeasures to Reduce Vehicle Speeds:

- Bulb-outs reduce the width of the roadway, and encourage slower, tighter turns.

##### FHWA Tier 4 Safety Countermeasures to Increase Attentiveness and Awareness:

- Improving lighting increases visibility for pedestrians, bicyclists, and drivers, particularly at approaches to crossings.

#### Estimated Cost

\$XXX,XXX - \$YYY,YYY

Estimate of capital costs

2025



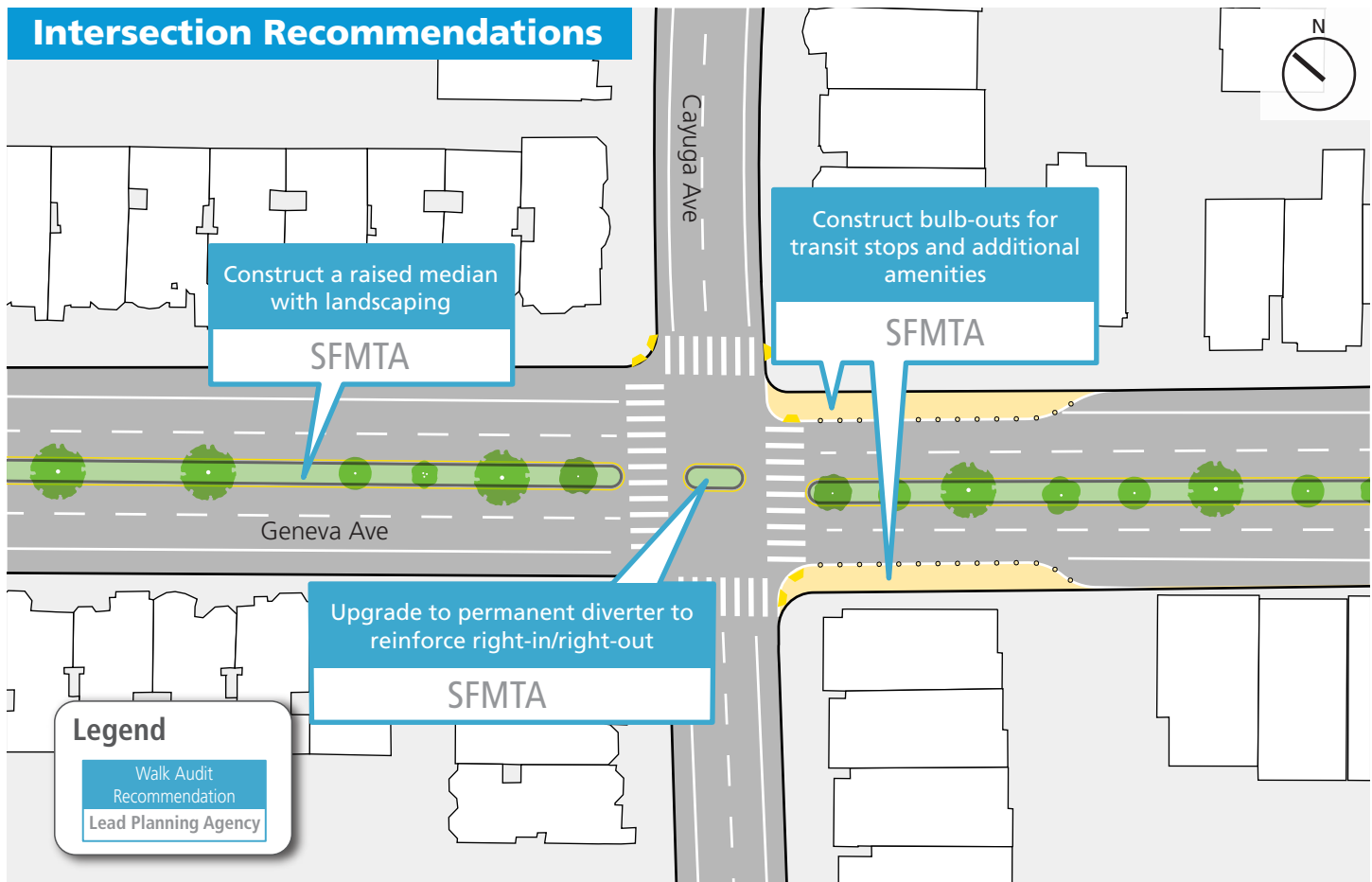
## Focus Station Area Action Plan

### 5 Geneva Avenue & Cayuga Avenue

#### Intersection Context

- Geneva Avenue and Cayuga Avenue is an intersection of a busy vehicle corridor and a “Slow Street” that serves as a community connection to parks, playgrounds, and schools.
- Two collisions resulted in severe injuries at this location, one due to a vehicle turning left from eastbound Geneva Avenue to northbound Cayuga Avenue.

#### Intersection Recommendations



#### Safety Benefits

##### FHWA Tier 1 Safety Countermeasures to Remove Severe Conflicts:

- Raised medians provide physical separation between opposing travel lanes and may serve as pedestrian refuges, allowing pedestrians to focus on crossing one direction of traffic at a time.
- Bus bulbs reduce pedestrian crossing distances and also enable buses to service a stop without merging in and out of travel lanes.
- Traffic diverters reduce cut through traffic and physically restrict left turns, reducing conflict exposure.

##### FHWA Tier 2 Safety Countermeasures to Reduce Vehicle Speeds:

- Bus bulbs and medians reduce the width of the roadway and encourage slower speeds.

#### Estimated Cost

\$XXX,XXX - \$YYY,YYY

Estimate of capital costs

2025