

Station at a Glance

Station Access Type: Balanced Intermodal

Station Area Map



Jurisdiction(s) with roads on HIN: City of Milpitas and Santa Clara County

Safety by the Numbers

5-year Collision Data: 2019-2023

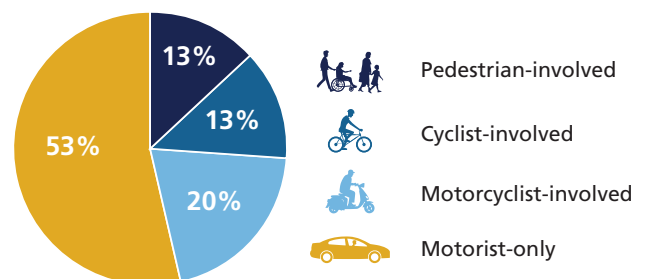
7% Percent of Station study area street miles on the HIN

15 Number of people killed or severely injured (KSI)

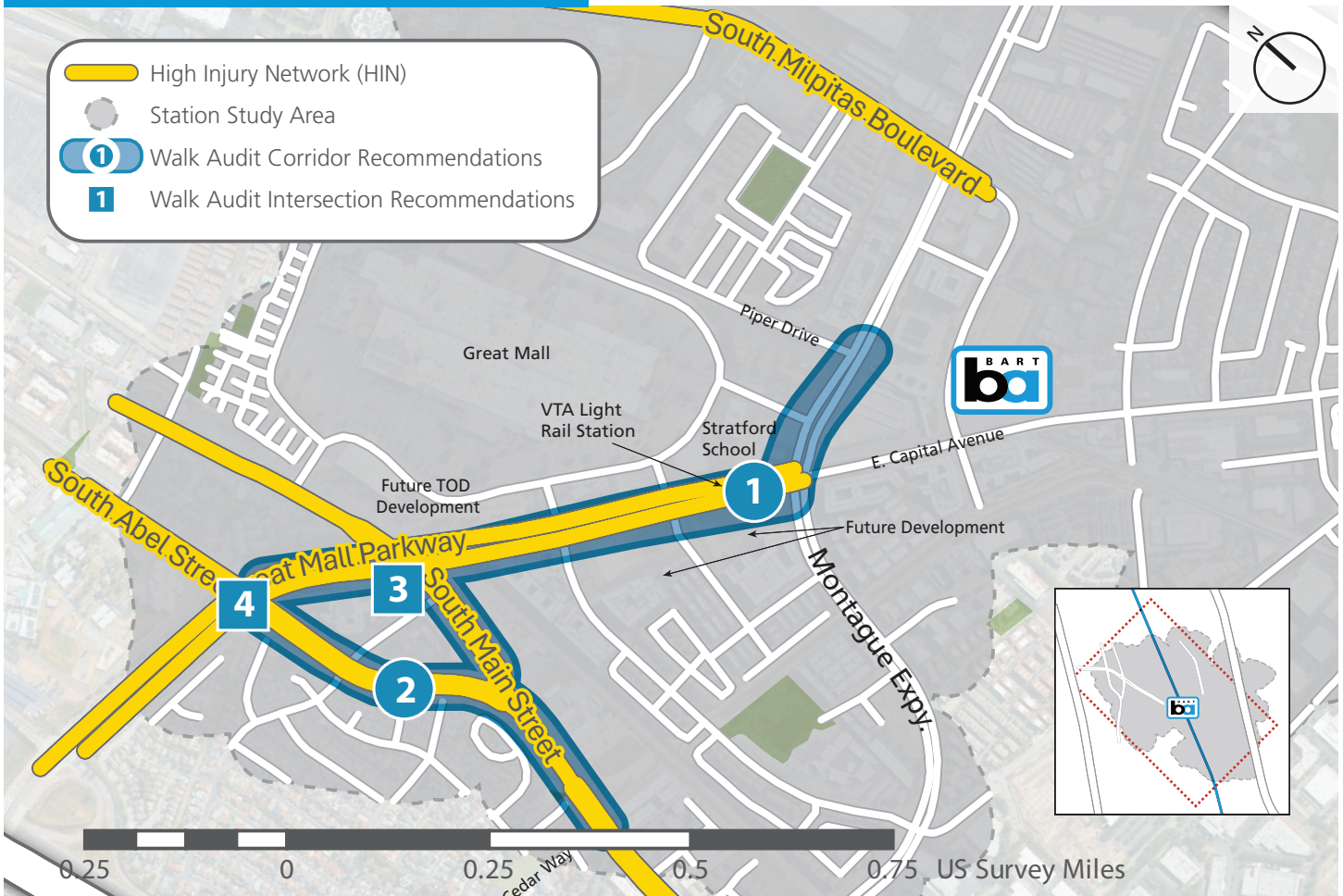
6% Percent of crashes that resulted in KSI

Killed/Severe Injury (KSI) Crashes

Total KSI: 15



Key Corridors and Intersections



Jurisdiction(s) with roads on HIN: City of Milpitas and Santa Clara County

- 1 Montague Expressway & Piper Drive to Great Mall Parkway & Main Street**
- 2 Main Street and Abel Street from Great Mall Parkway to Cedar Way**
- 3 Great Mall Parkway & Main Street**
- 4 Great Mall Parkway & Abel Street**

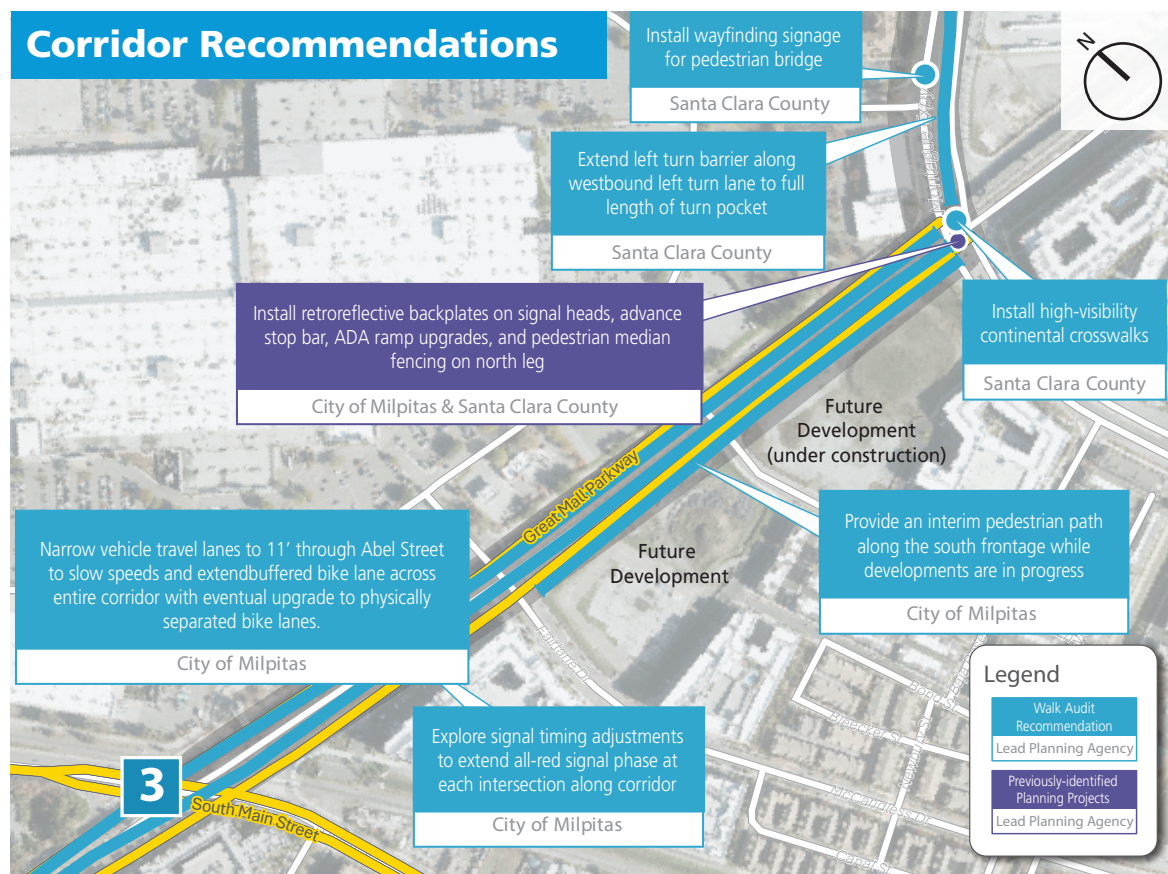
Focus Station Area Action Plan

1 Montague Expressway & Piper Drive to Great Mall Parkway & Main Street

Corridor Context

- This study corridor includes Montague Expressway by the BART Station and Great Mall Parkway from Montague Expressway to South Main Street. This is a high-activity corridor along the Great Mall with VTA bus and light rail service.
- Survey respondents reported that drivers tend to ignore traffic signals due to long cycle lengths.
- There have been 67 collisions on this corridor between 2019 and 2023, with nearly half of them being broadside collisions. The most common collision causes are unsafe speeds and traffic sign and signal violations. A major risk factor on this corridor is wide, multi-lane roads with minimal crossing opportunities and long cycle lengths.

Corridor Recommendations



Safety Benefits

FHWA Tier 1 Safety Countermeasures to Remove Severe Conflicts:

- Extending the raised left turn barrier along Montague Expressway will prevent drivers exiting Falcon Drive from making dangerous maneuvers across several lanes of traffic to enter the left turn lanes and head southbound on Great Mall Parkway.

FHWA Tier 2 Safety Countermeasures to Reduce Vehicle Speeds:

- Reducing travel lane width and coordinating signal timing reduces vehicle speeds.

FHWA Tier 3 Safety Countermeasures to Manage Conflicts in Time:

- Extending the all-red signal phase decreases the likelihood of a broadside collision by allowing more time for vehicles to clear the intersection.

FHWA Tier 4 Safety Countermeasures to Increase Attentiveness and Awareness:

- High-visibility crosswalks make crossing pedestrians more visible to drivers.

Estimated Cost

\$XXX,XXX - \$YYY,YYY

Estimate of capital costs

2025

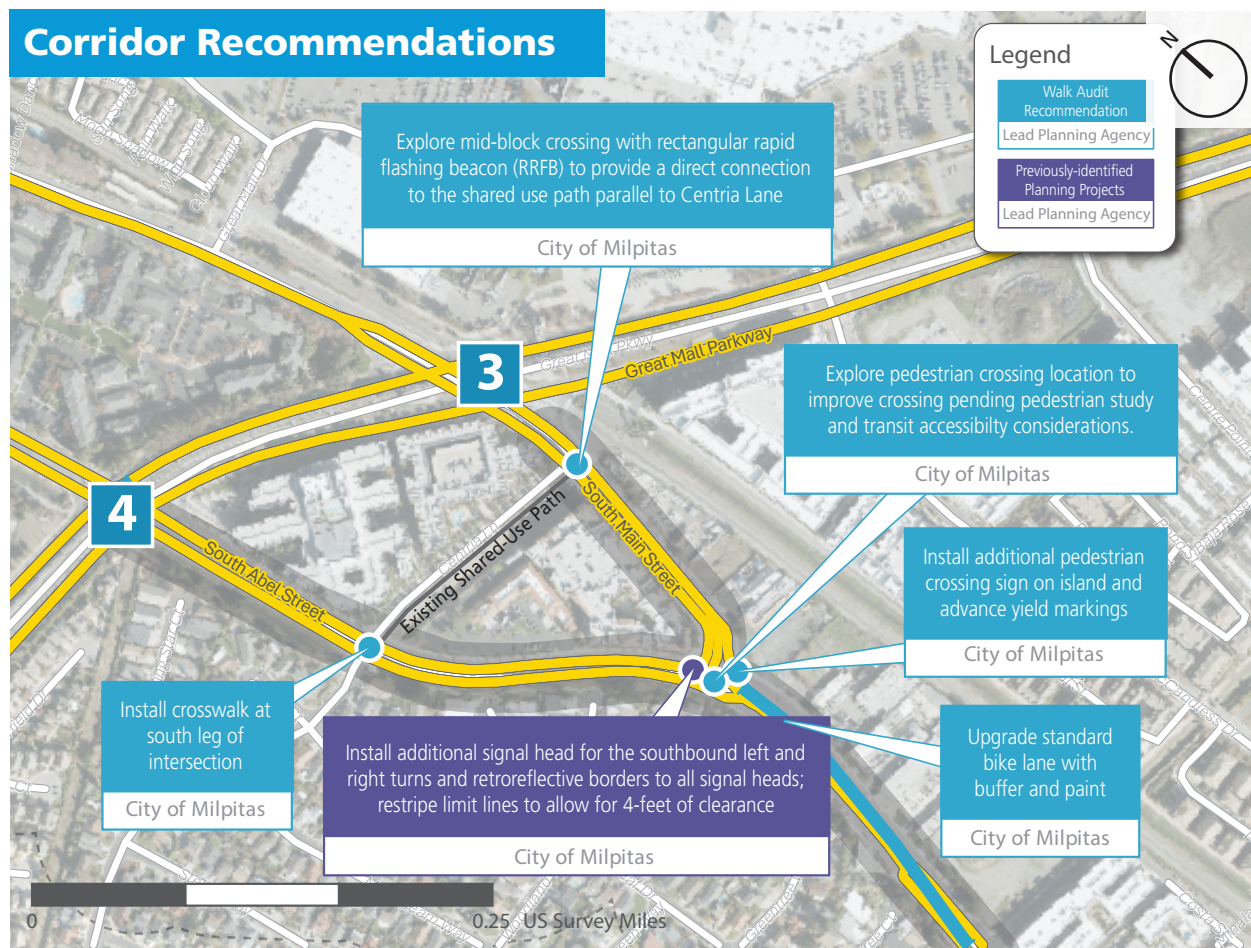
Focus Station Area Action Plan

2 Main Street and Abel Street from Great Mall Parkway to Cedar Way

Corridor Context

- Main Street is a north-south connector between Montague Expressway and Great Mall Parkway in Milpitas. Main Street splits into two parallel roads, Main Street and Abel Street, about a quarter of a mile south of Great Mall Parkway. Main Street provides access to the Great Mall VTA light rail station on Great Mall Parkway.
- The study corridor features long distances between marked or signalized crossings, which may encourage unsafe crossings.
- This corridor segment recorded 15 collisions between 2019-2023. Nearly half of these collisions were the result of unsafe speeds, and the next common violation was improper turning.

Corridor Recommendations



Safety Benefits

FHWA Tier 2 Safety Countermeasures to Reduce Vehicle Speeds:

- Upgrading the existing bike lanes (Class II) to be buffered will provide more physical separation between moving vehicles and bicyclists. It will also require a vehicle lane width reduction, which can help manage vehicle speeds along the corridor.

FHWA Tier 4 Safety Countermeasures to Manage Increase Attentiveness and Awareness:

- Providing additional crossing opportunities at locations with appropriate crossing facilities increases the likelihood that pedestrians will cross where they will be most visible to vehicles.
- Advance stop bars improve visibility to pedestrians by increasing the distance between the yielding motorist and crossing pedestrian.
- Retroreflective backplates enhances visibility of the signal in daytime and nighttime.

Safe Trips to BART: An Action Plan for Safer Roadways

Estimated Cost

\$XXX,XXX - \$YYY,YYY

Estimate of capital costs

2025

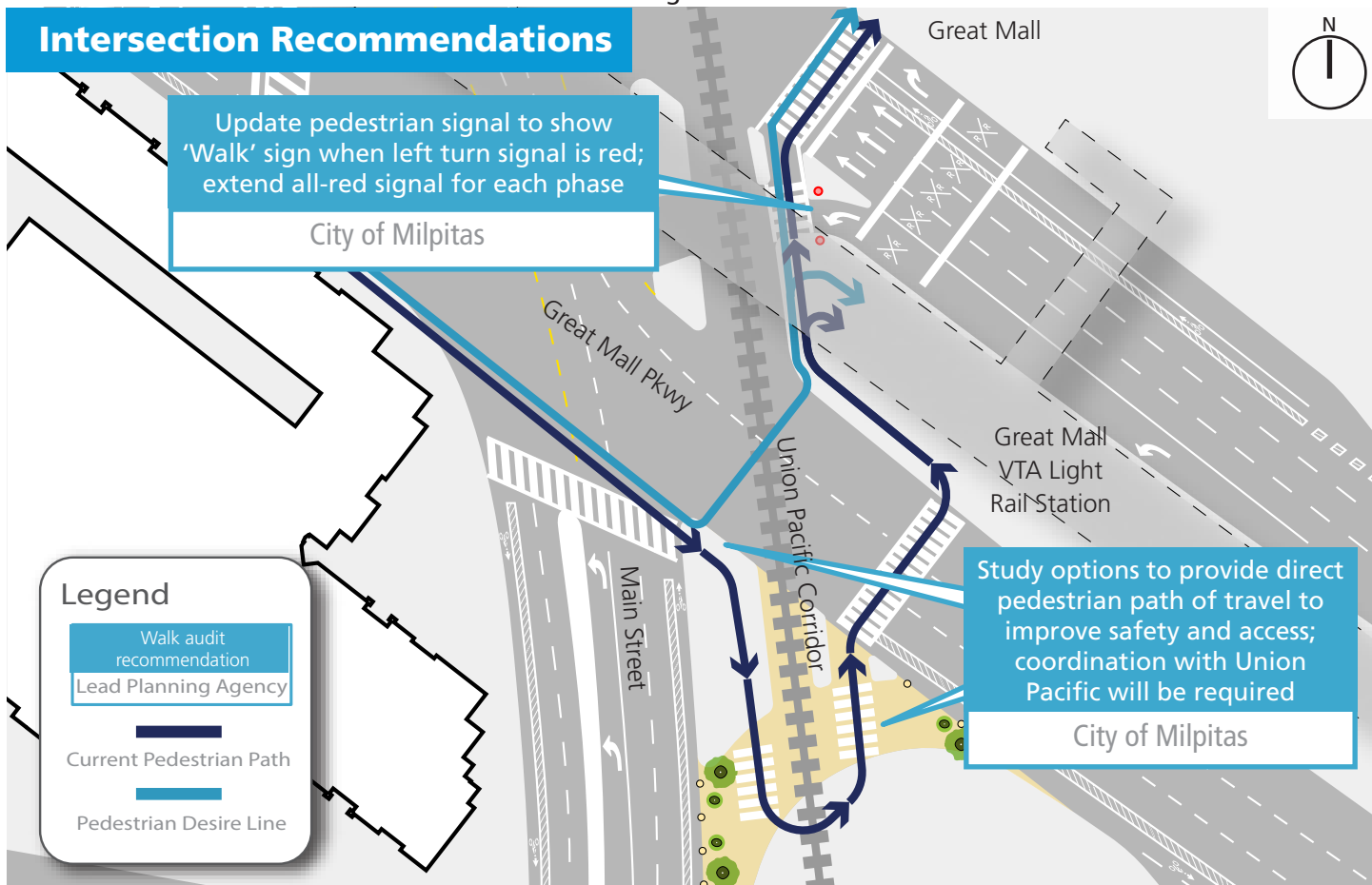
Focus Station Area Action Plan

3 Great Mall Parkway & Main Street

Intersection Context

- Great Mall Parkway is a six-lane arterial that intersects Main Street, a five-lane collector, near the Great Mall and the Great Mall VTA light rail station. The intersection has high volumes of vehicle traffic accessing Great Mall, I-880, and nearby businesses and residences.
- This intersection is complicated by a Union Pacific Rail line that runs parallel to Main Street, creating additional crossings for pedestrians trying to access the Great Mall or the light rail station. Pedestrians on the southwest corner have to cross traffic four times to access the light rail station located above the center median.

Intersection Recommendations



Safety Benefits

FHWA Tier 1 Safety Countermeasures to Remove Severe Conflicts:

- Closing the slip lane requires vehicles to stop at red lights.
- Simplifying the pedestrian crossing options increases the likelihood that pedestrians will cross where they are most visible to drivers and may reduce overall crossing distance.

FHWA Tier 2 Safety Countermeasures to Reduce Vehicle Speeds:

- Closing the slip lane reduces the turn radius and encourages vehicles to make slower turns.

FHWA Tier 3 Safety Countermeasures to Manage Conflicts in Time:

- Allowing pedestrians to cross when the left turn signal is red will increase the likelihood that pedestrians wait to cross at a safe opportunity.
- Increasing the all-red signal phase, as recommended along Great Mall Parkway, can reduce collision likelihood by allowing more time for vehicles to clear the intersection.

Estimated Cost

\$XXX,XXX - \$YYY,YYY

Estimate of capital costs

2025

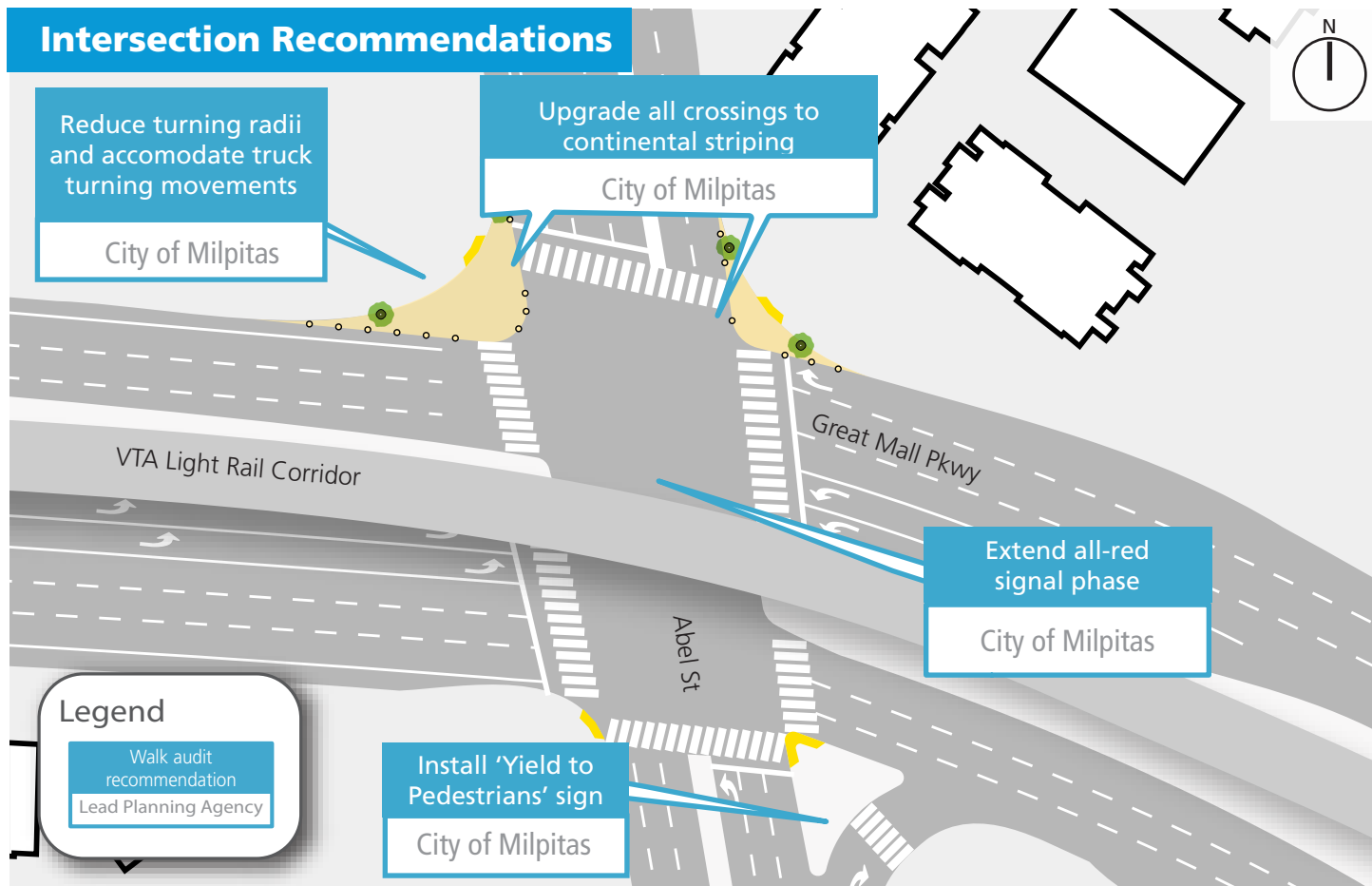
Focus Station Area Action Plan

4 Great Mall Parkway & Abel Street

Corridor Context

- Great Mall Parkway intersects with Abel Street just west of the Great Mall VTA light rail station and the Great Mall.
- Pedestrian crossings are approximately 185 feet long, exposing pedestrians to traffic for long periods of time.
- 13 collisions were recorded at this intersection between 2019-2023. A traffic signal or sign violation contributed to over half of these.

Intersection Recommendations



Safety Benefits

FHWA Tier 1 Safety Countermeasures to Remove Severe Conflicts:

- Bulb-outs reduce the crossing distance and exposure time for crossing pedestrians.

FHWA Tier 2 Safety Countermeasures to Reduce Vehicle Speeds:

- Bulb-outs reduce the turning radius and encourage drivers to reduce speed around turns.

FHWA Tier 3 Safety Countermeasures to Manage Conflicts in Time:

- Increasing the all-red signal phase, as recommended along Great Mall Parkway, can reduce collision likelihood by allowing more time for vehicles to clear the intersection.

FHWA Tier 4 Safety Countermeasures to Increase Attentiveness and Awareness:

- High-visibility continental crosswalks make crossing pedestrians more visible to drivers, and additional signage can alert drivers to pedestrian activity.

Estimated Cost

\$XXX,XXX - \$YYY,YYY

Estimate of capital costs

2025