



BART 16th St. Plaza Concepts



DESIGN GOALS & TOOLKIT

DESIGN GOALS RECAP

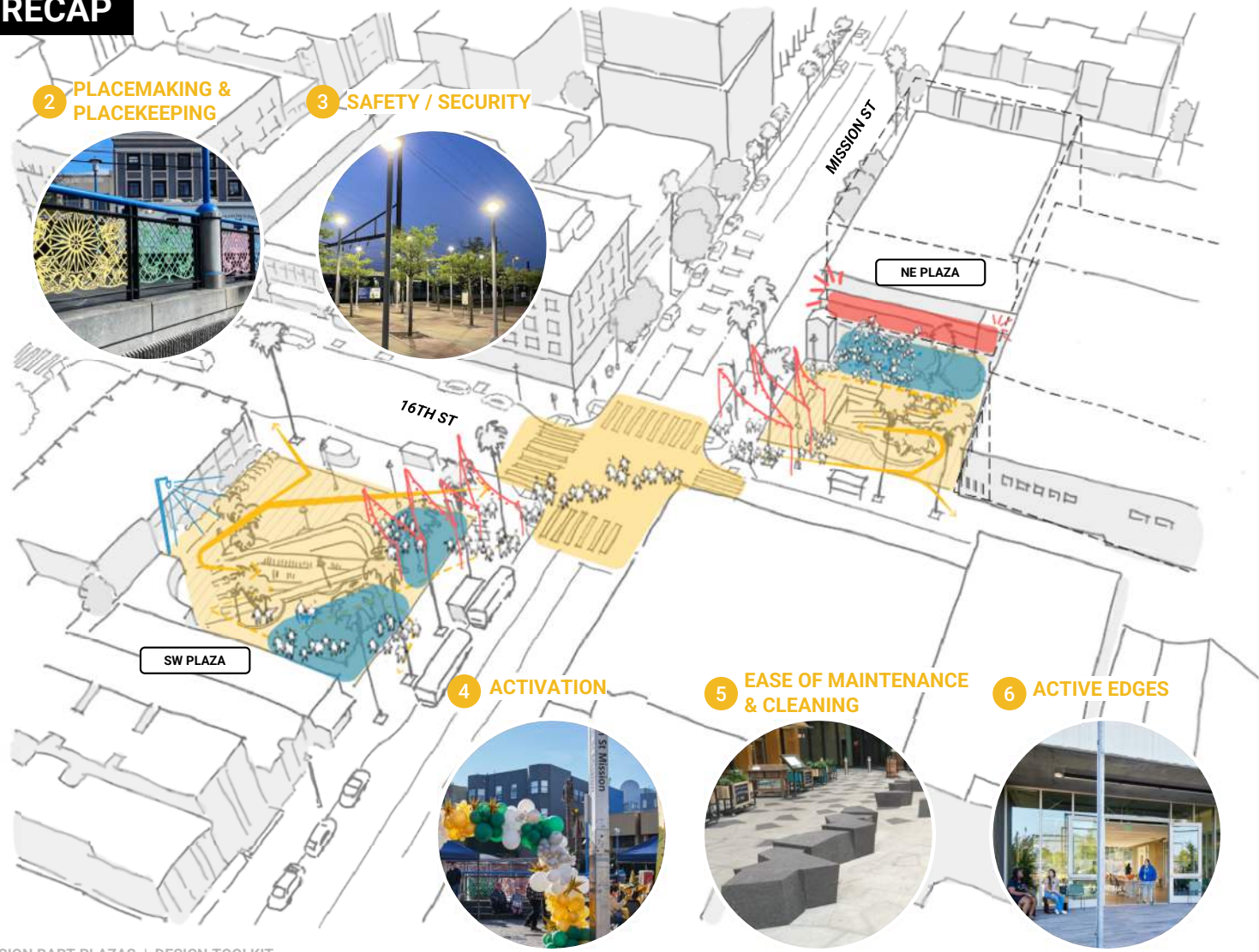
1 RIDER ACCESS & EMERGENCY EGRESS



2 PLACEMAKING & PLACEKEEPING



3 SAFETY / SECURITY



4 ACTIVATION



5 EASE OF MAINTENANCE & CLEANING

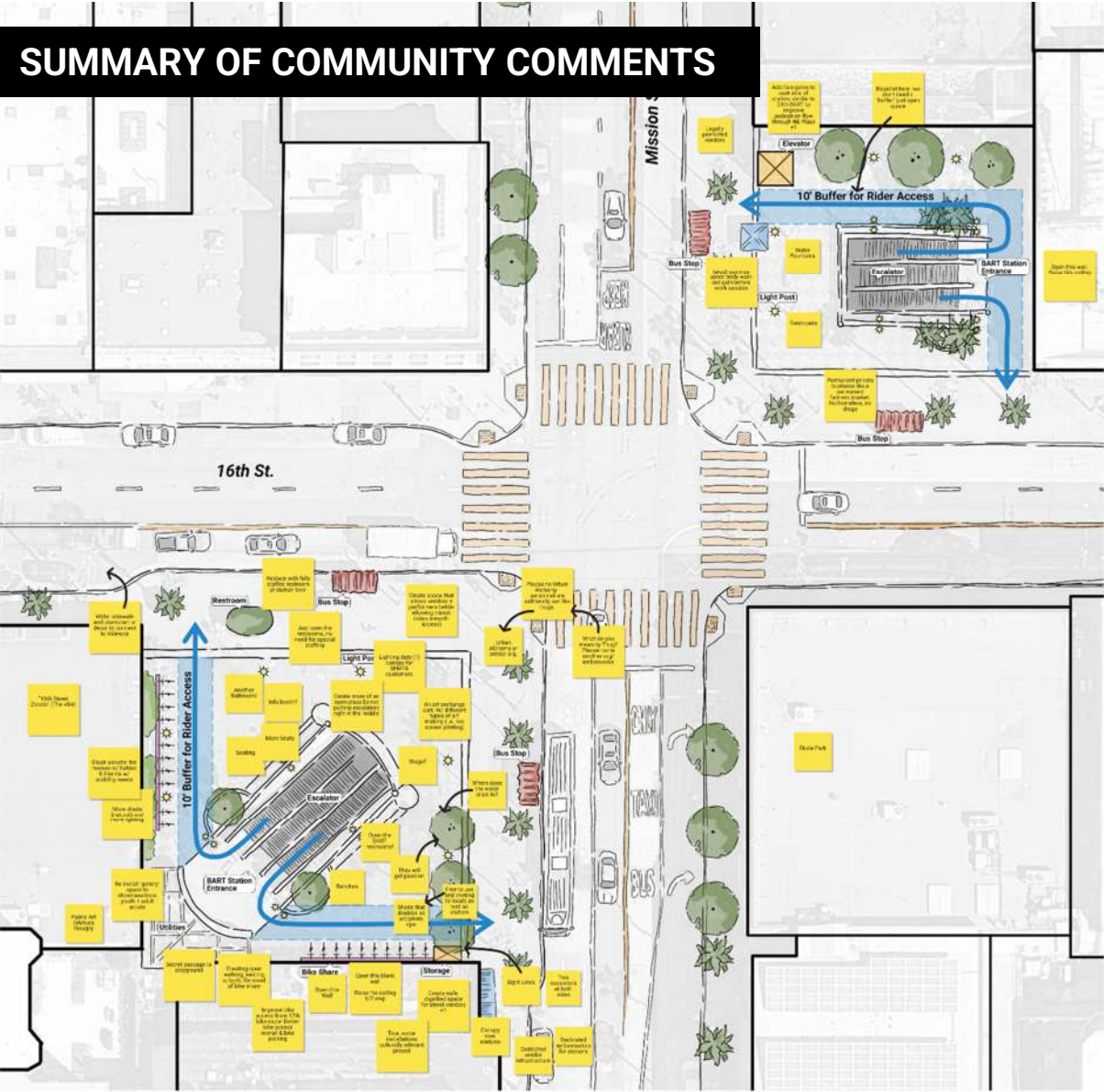


6 ACTIVE EDGES



7 UNIFYING DESIGN





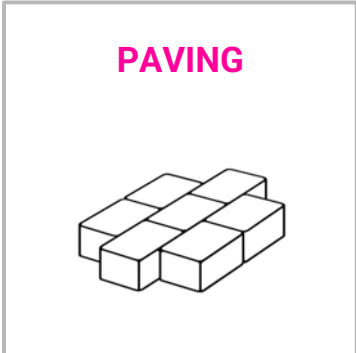
SUMMARY OF COMMUNITY COMMENTS

KEY TAKEAWAYS:

- Increase safety & security
- Promote positive activation (e.g. vending, games, music, community programming)
- Preserve & highlight inclusive cultural & community identity for AICD and other community groups.
- Improve maintenance & cleaning
- Explore active edges with adjacent buildings
- Consider seating
- Consider wayfinding
- Consider more colors
- Consider greening

DESIGN TOOLKIT

- Creating a menu of options for a **plug and play approach**.
- Intended to be **practical** and **deliverable**.
- Based on input from BART, City and community.
- Currently there is no funding for the next design phase. We will have to apply for **grant funding**.
- Art & design treatment will be part of the next design phase. More community consultation will occur during this phase.
- The more funding secured, the more that can be done.
- **Stewardship** and **maintenance plans** will inform the project design and are critical toward advancing project.



PAVING



AICD-LED CROSSWALK TREATMENT



**ACCENTUATE
GRID PATTERN**



**EMPHASIZE
GATHERING SPACES**



LITHOMOSAIC



LITHOCRETE

****NOTE: LITHO MATERIAL IS BEING USED FOR LAKE MERRITT TOD PROJECT**

MOVEABLE FURNITURE

GOALS:

- PORTABLE
- COLORFUL
- DURABLE
- SAFE
- STORAGE
- STEWARDSHIP



ALFRESCO DINING CHAIR & 18" ROUND END TABLE

MFR: LOLL

MATERIAL: RECYCLED HIGH-DENSITY PLASTIC (POLYETHYLENE)

COLOR OPTIONS: WIDE VARIETY

CHAIR DIMENSIONS: 32.5"H X 18.75"W X 15"D

TABLE DIMENSIONS (SQ): 28"SQ. X 29.1"H

STORAGE: STACKABLE

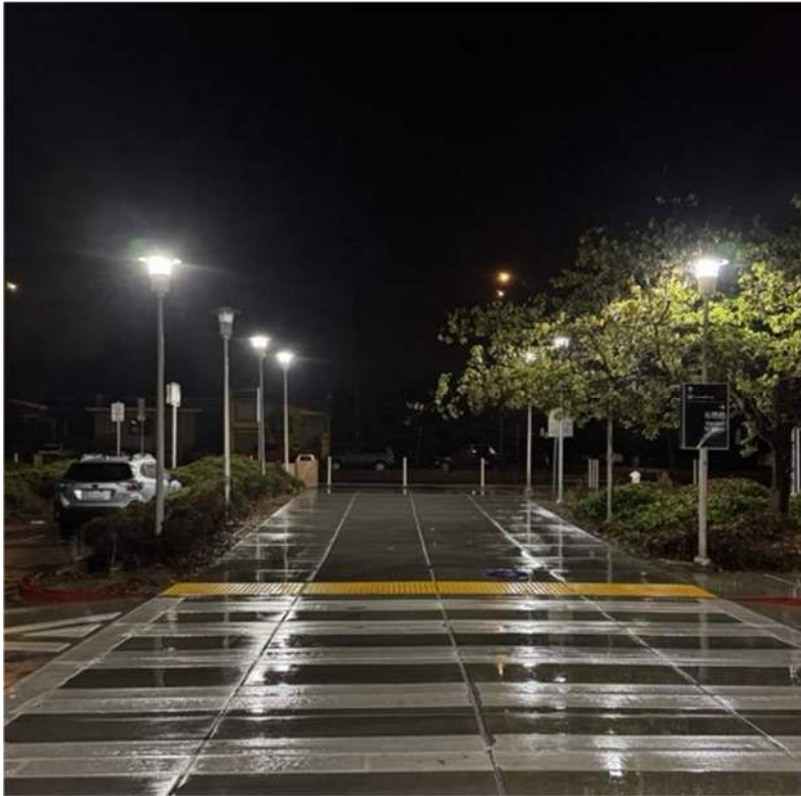


CONCRETE STORAGE CONTAINER

OTHER POTENTIAL STORAGE SOLUTIONS:

- 1979 MISSION (FORMER WALGREENS SITE)
- LOCAL BUSINESS STEWARDSHIP

SITE ELEMENTS + AMENITIES



BART APPROVED - NORTH BERKELEY BART STATION



HESS PLUG-AND-PLAY SYSTEM



OVERHEAD SHADE STRUCTURE



**CIVIC CENTER/UN PLAZA
CATENARY LIGHTING**

*NOTE: WILL DETERMINE FEASIBILITY
IN THE NEXT DESIGN PHASE*

WAYFINDING + SIGNAGE

ON THE BART PLAZAS



TRANSIT WAYFINDING SIGNAGE

Public Notice

Code of Conduct

No Smoking
No Vaping

No Eating
No Drinking

Proof of
Payment

24-hour
Surveillance

No Littering

Headphones
Only

No Bike
Riding

No Riding
Scooters

Prohibited Behavior:

- Bikes on first car of train
- Possessing hazardous or explosive materials
- Animals unless service animals or enclosed in carrying case
- Public urination or defecation
- Restroom access without ticket
- Sexual Harassment
- Sitting on stairs or exit path
- Skateboarding
- Spitting
- Tampering with equipment
- Carrying unlawful weapons
- Vending without a permit
- Aggressive panhandling

Violation to any rules mentioned above while on BART property is subject to one or more of the following: CA Public Utilities Code 599170; CA Penal Code Section 19.8, 171.7, 374.4, 369i, 594, 640 and 647; CA Vehicle Code Section 21113. Violations may result in up to one year imprisonment, fines of up to \$50,000, and/or community service; or the maximum penalty by law.

Public Safety

No Strollers
on Escalators

Watch the
Gap

Do not Text
and Walk

Hold onto
Escalator
Handrails

Wait behind
Platform Edge
Tiles

Report
Unattended
Items

Assisted Evacuation

- Make yourself known to Station Agent or Operations Control Center (OCC) by using Elevator Intercom or White Courtesy Phone or call 911
- Ask for assistance from other BART Riders
- During Station evacuation, Station will be checked and swept by Station Agent, OCC, BART Police Officers, and/or First Responders

BART Police: (510) 464-7000 For Emergency call 911

CODE OF CONDUCT

IN THE NEIGHBORHOOD ON CITY SIDEWALKS & STREETS

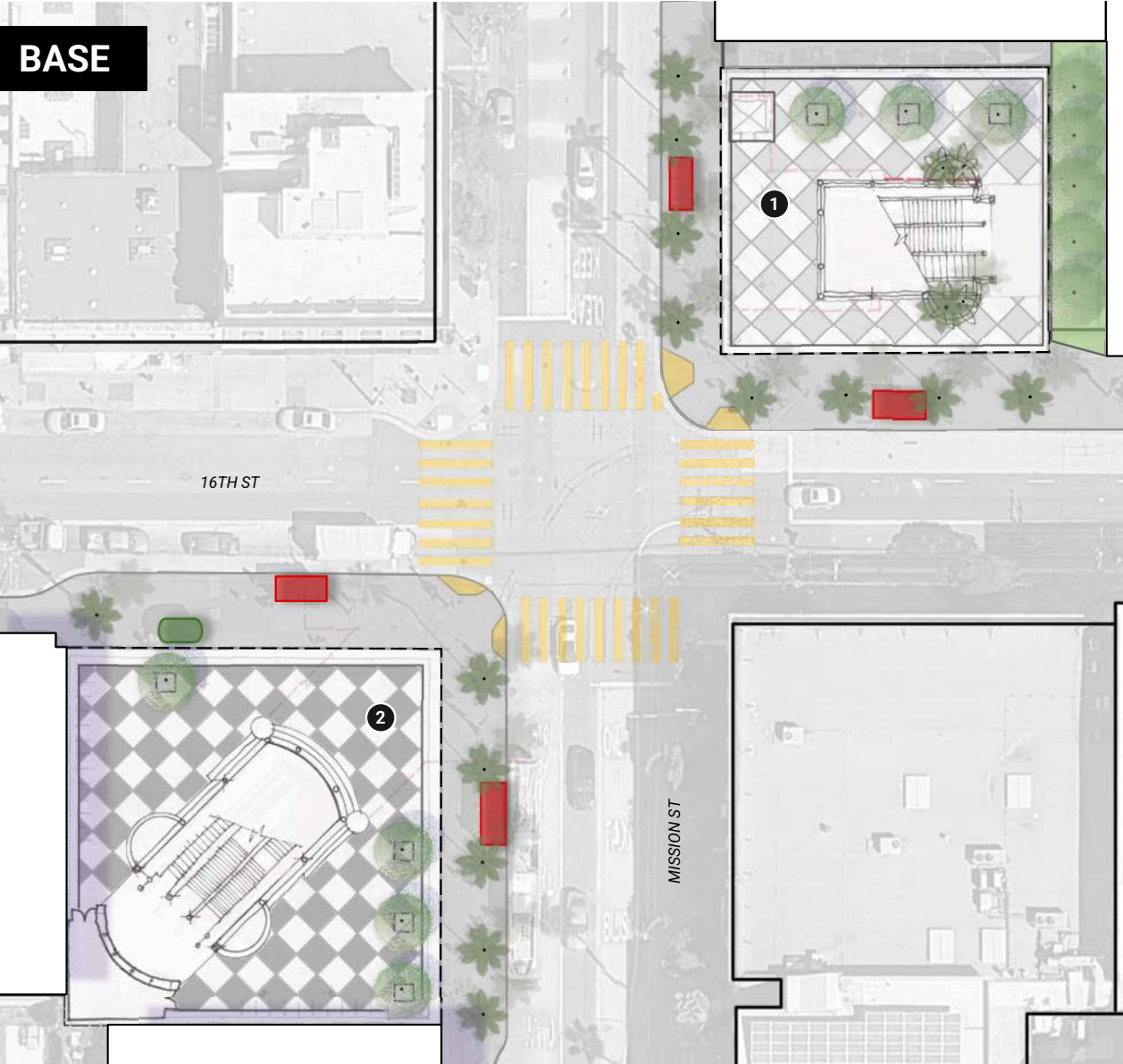


MAJOR MISSION FEATURE



DIRECTIONAL AND WHIMSICAL

CONCEPT DEVELOPMENT



DESIGN TOOLKIT

PAVING:

- 1 NO CHANGE TO THE NE PLAZA
- 2 *UPGRADE SW PLAZA TO ASPHALT OR CONCRETE (PRIORITY)*

SEATING:

NO CHANGE

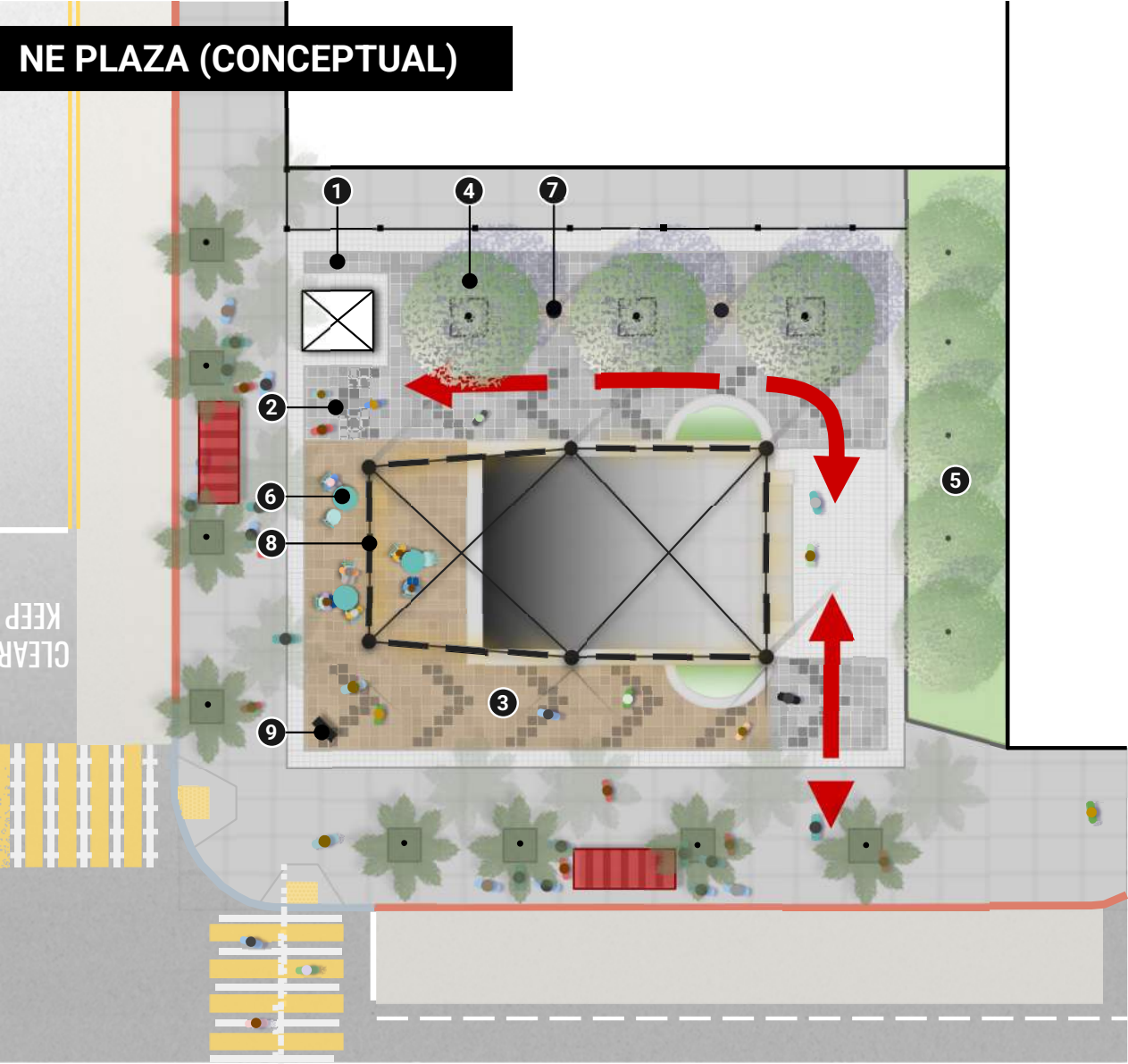
SITE AMENITIES:

NO CHANGE

WAYFINDING & SIGNAGE:

NO CHANGE

NE PLAZA (CONCEPTUAL)



DESIGN TOOLKIT

PAVING:

- 1 EXISTING GRANITE PAVERS
- 2 PAVING PATTERN TO ACCENTUATE PATH OF TRAVEL
- 3 FLEX ZONE DEFINED BY PAVING TO CREATE DESIGNATED SPACES FOR SEATING/VENDING

GREENING

- 4 EXISTING TREES
- 5 1979 MISSION PLANTER

SEATING:

- 6 MOVEABLE FURNITURE

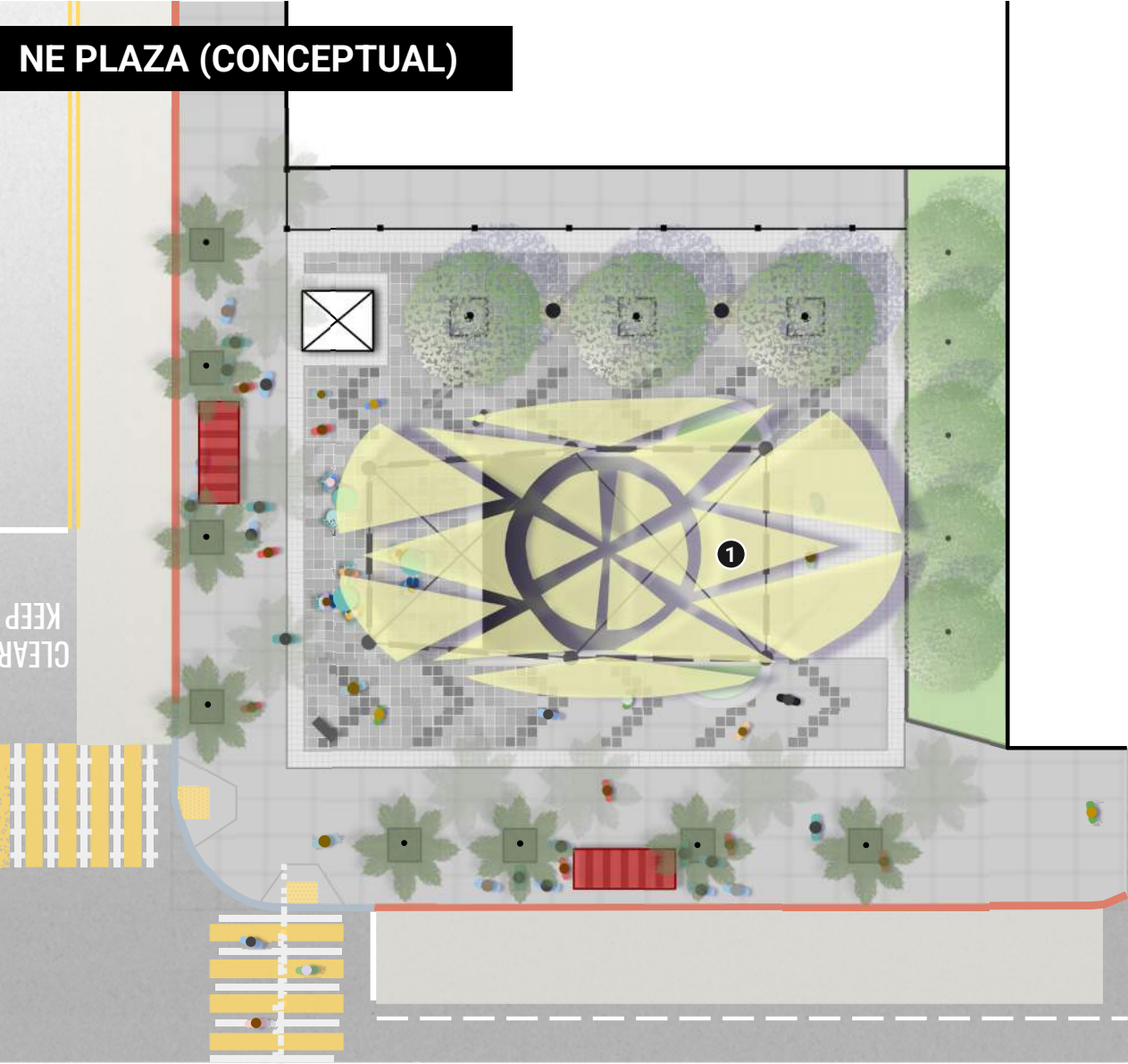
SITE AMENITIES:

- 7 BART LIGHT STANDARDS
- 8 OVERHEAD CATENARY LIGHTING STRUCTURES TO CREATE A GATEWAY WITH COLOR

WAYFINDING & SIGNAGE:

- 9 TRANSIT SIGNS
- REAL TIME DISPLAYS

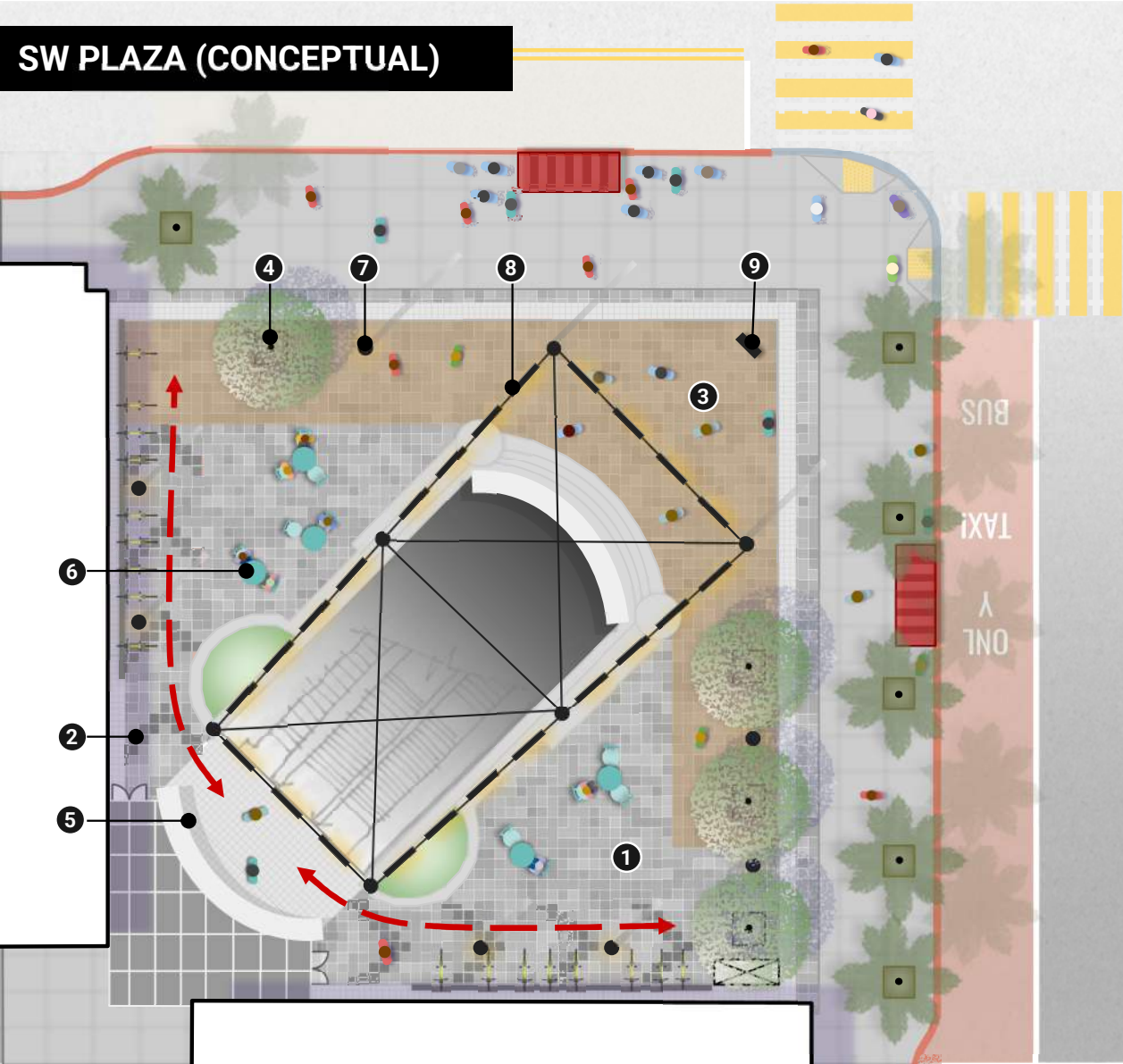
NE PLAZA (CONCEPTUAL)



DESIGN TOOLKIT

SITE AMENITIES:

- 1 OVERHEAD TENSILE FABRIC SHADE STRUCTURES TO CREATE A GATEWAY WITH COLOR



DESIGN TOOLKIT

PAVING:

- 1 EXISTING GRANITE PAVERS
- 2 PAVING PATTERN TO ACCENTUATE PATH OF TRAVEL
- 3 FLEX ZONE DEFINED BY PAVING TO CREATE DESIGNATED SPACES FOR SEATING/VENDING

GREENING:

- 4 EXISTING TREES

PLACEMAKING/PLACEKEEPING:

- 5 COMMUNITY ART WALL

SEATING:

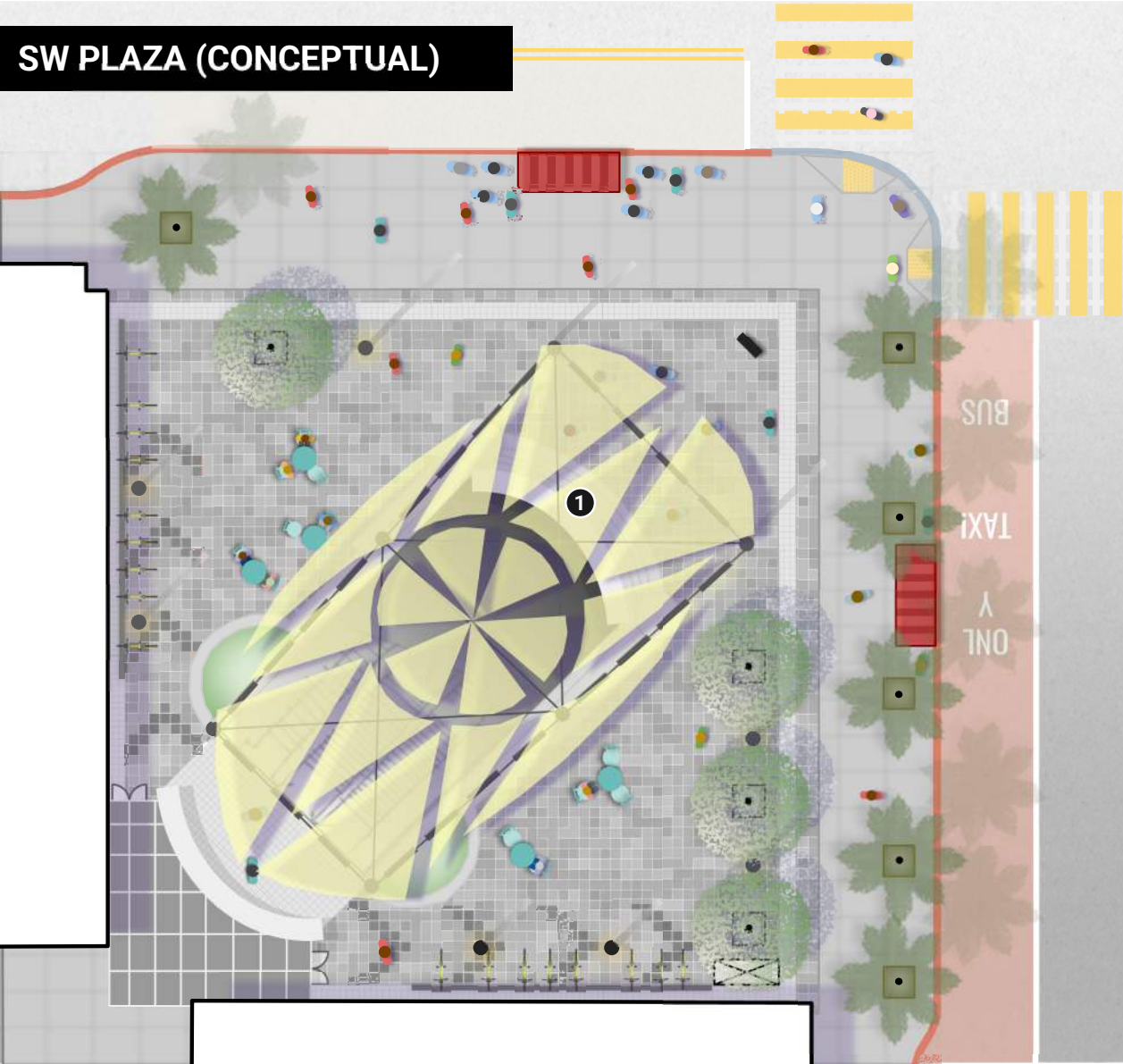
- 6 MOVEABLE FURNITURE

SITE AMENITIES:

- 7 BART LIGHT STANDARDS
- 8 OVERHEAD CATENARY LIGHTING STRUCTURES TO CREATE A GATEWAY WITH COLOR

WAYFINDING & SIGNAGE:

- TRANSIT SIGNS
- 9 REAL TIME DISPLAYS



DESIGN TOOLKIT

SITE AMENITIES:

- ① OVERHEAD TENSILE FABRIC SHADE STRUCTURES
TO CREATE A GATEWAY WITH COLOR



 **THANK YOU!**

Check us out at <https://www.bart.gov/about/planning/16th>
Contact us at 16MissionBART@bart.gov

