



Relieve crowding/system redundancy
– \$200 Million



Relieve crowding/system redundancy – Transbay Tube (TBT) Phase 2

Transbay Corridor

Existing Conditions
Westbound to SF Core
AM Peak Hour

10,000 People in Cars
29,000 Transit Trips

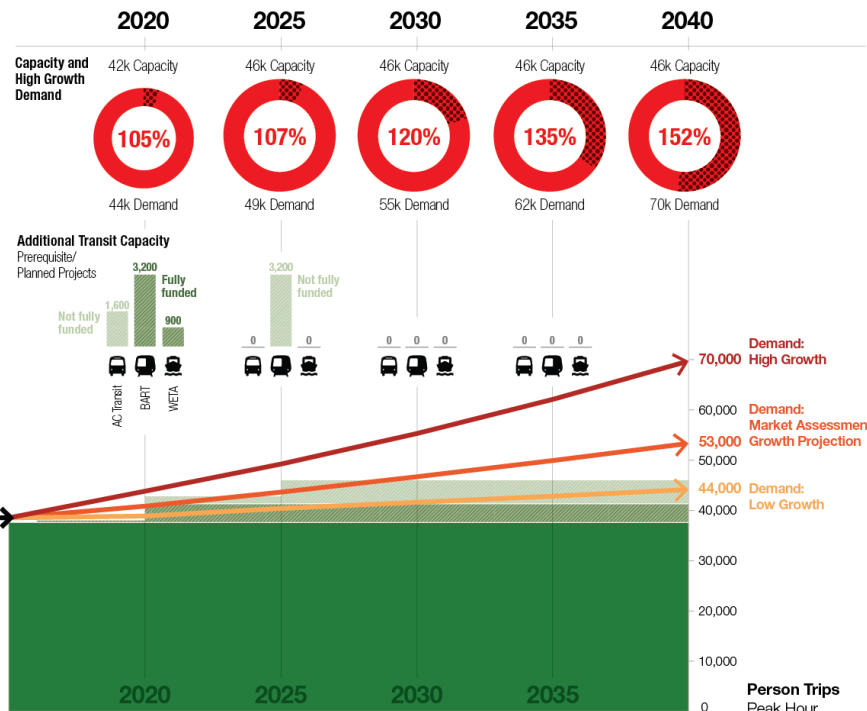
2,700 AC Transit & WestCAT bus
25,000 BART
1,300 WETA ferry

2015

37k Capacity

105%

39k Demand



- **Scope:**

- Partner with mainline rail agencies
- Examine governance and funding
- Conduct regional market analysis
- Develop service plan for rail networks
- Develop operations plan and detailed transportation model
- Initiate conceptual engineering

- **Initial Phase: \$10 M**

- **Happening Now:**

- Develop scope
- Preliminary work with MTC

- **Next Steps:**

- Initiate Project Advancement Plan in Fall 2017 and other activities in early 2018



Relieve crowding/system redundancy – BART Metro/Core Capacity



- **Scope:**
 - Design and construction of BART Metro infrastructure improvements, such as extended tail tracks, crossovers, station circulation improvements
- **Initial Phase: \$21 M**
- **Happening Now:**
 - Engineering tail track extensions identified in 2013 Study
 - Project development for FTA New Starts Core Capacity
- **Next Steps:**
 - Continue Tail Tracks design through Spring 2018
 - Tail Tracks Construction 2018-2019
 - Initiate Engineering on additional improvements
 - Advance to Engineering phase of FTA's program