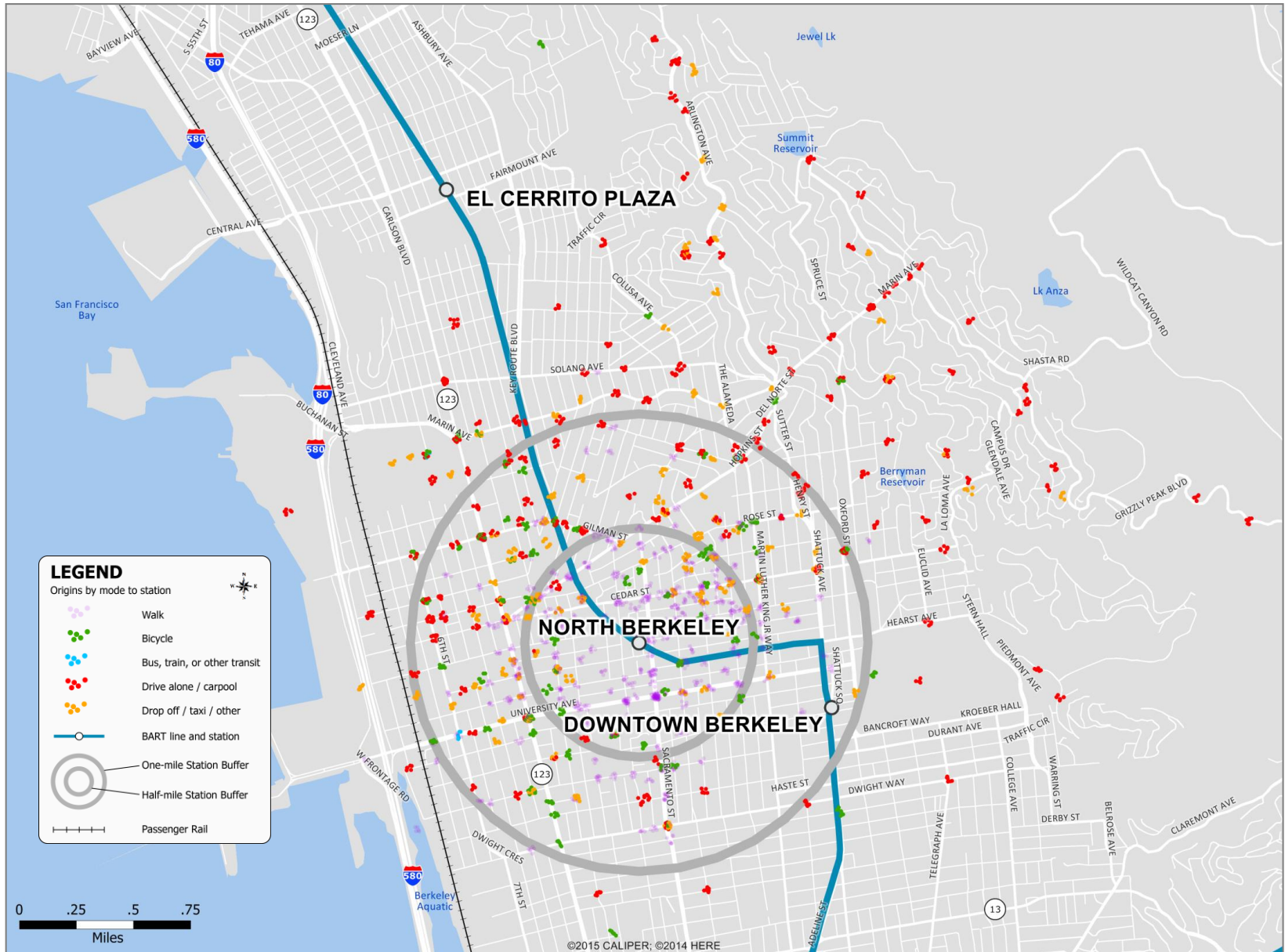
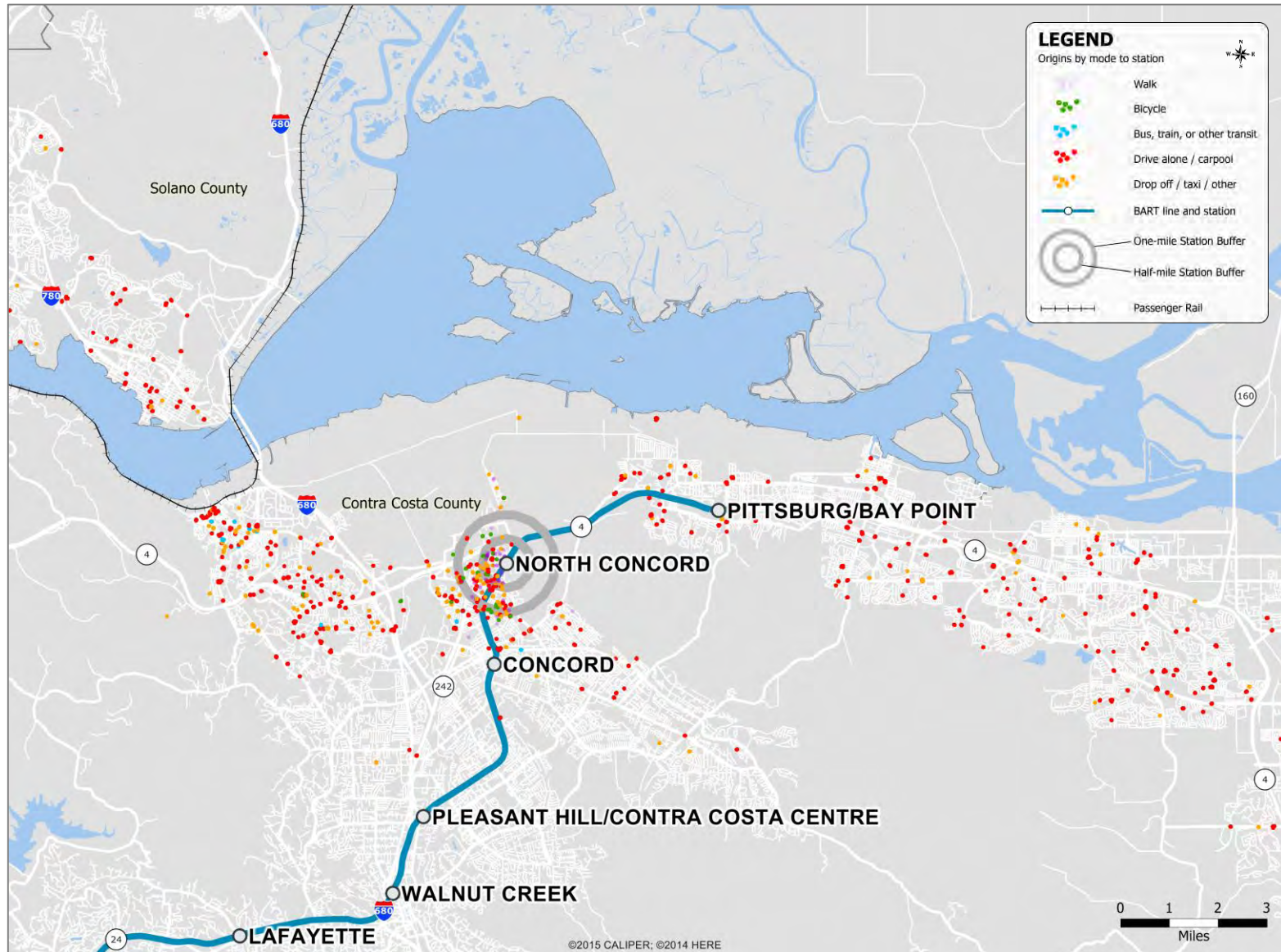


# North Berkeley Station: Home Locations of BART Riders by Mode



2015 BART Station Profile Study (weekday). Data are weighted to represent average weekday ridership. Weighted points are scattered around actual origin point. Scattering process may result in points appearing in bodies of water on some maps. The "Drive alone / carpool" category includes motorcycle, and "Drop off / taxi / other" includes app-based ridesharing services like Uber and Lyft.

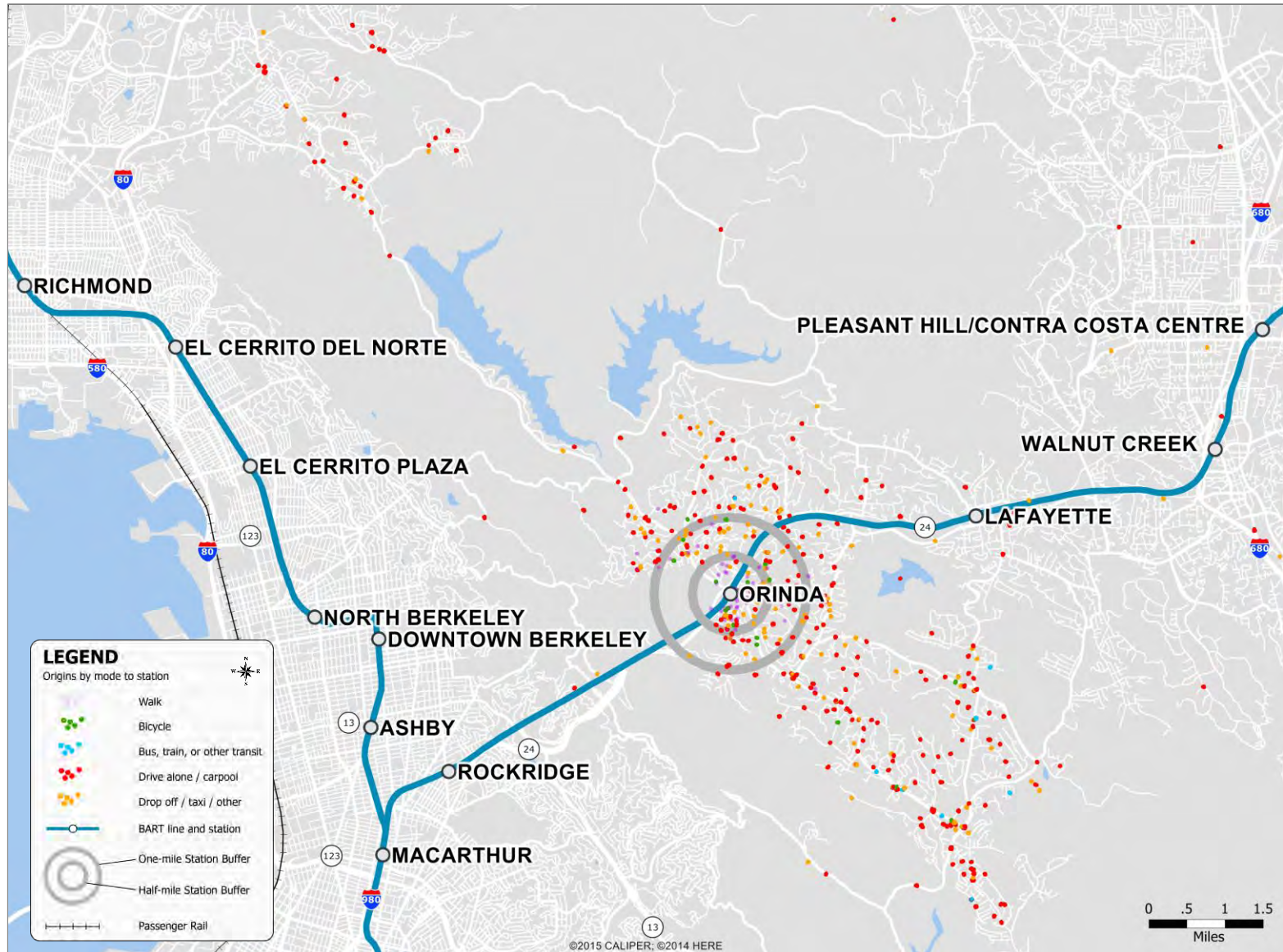
# North Concord Station: Home Locations of BART Riders by Mode



2015 BART Station Profile Study (weekday). Data are weighted to represent average weekday ridership. Weighted points are scattered around actual origin point. Scattering process may result in points appearing in bodies of water on some maps. The "Drive alone / carpool" category includes motorcycle, and "Drop off / taxi / other" includes app-based ridesharing services like Uber and Lyft.

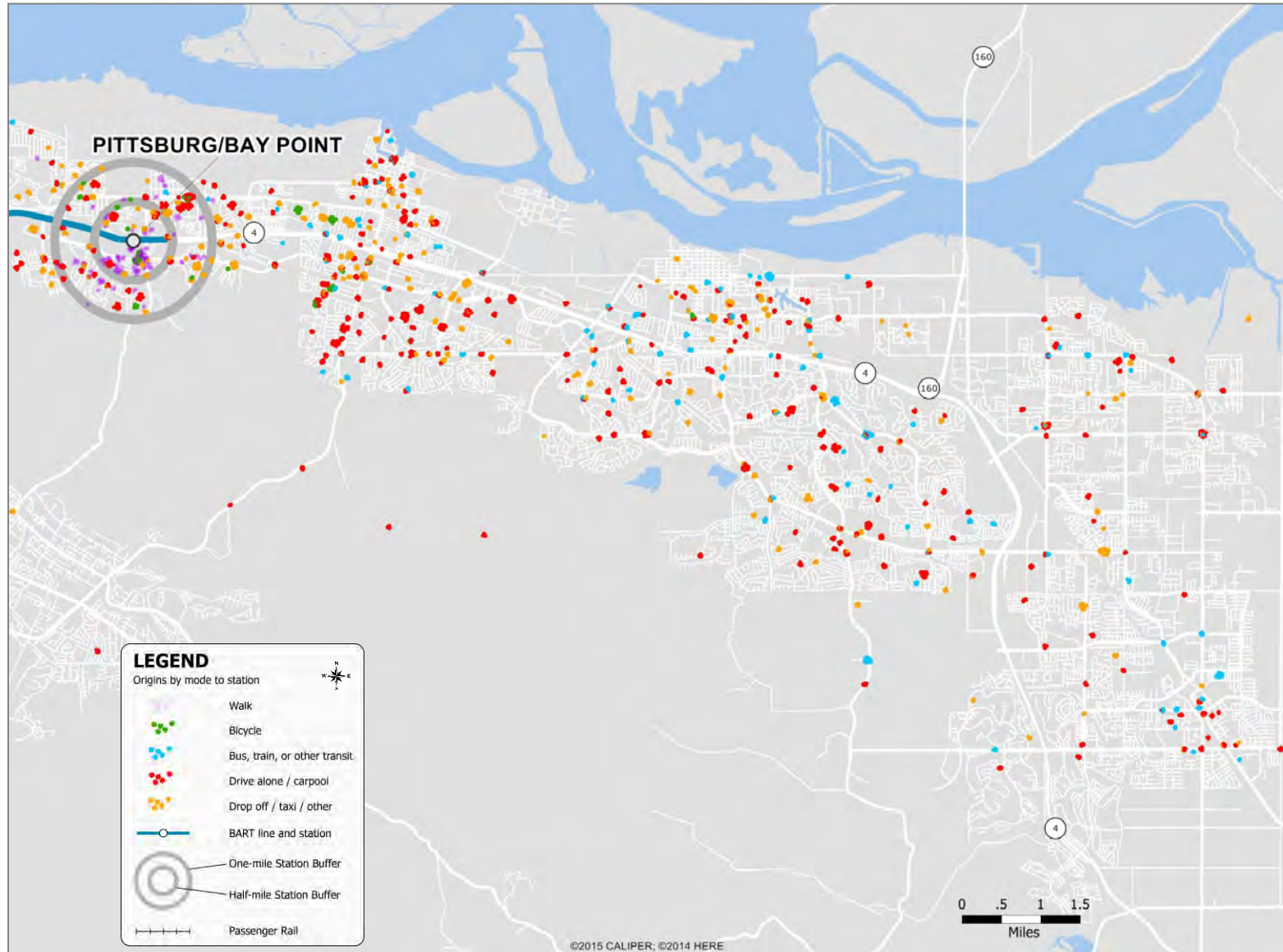


# Orinda Station: Home Locations of BART Riders by Mode



2015 BART Station Profile Study (weekday). Data are weighted to represent average weekday ridership. Weighted points are scattered around actual origin point. Scattering process may result in points appearing in bodies of water on some maps. The "Drive alone / carpool" category includes motorcycle, and "Drop off / taxi / other" includes app-based ridesharing services like Uber and Lyft.

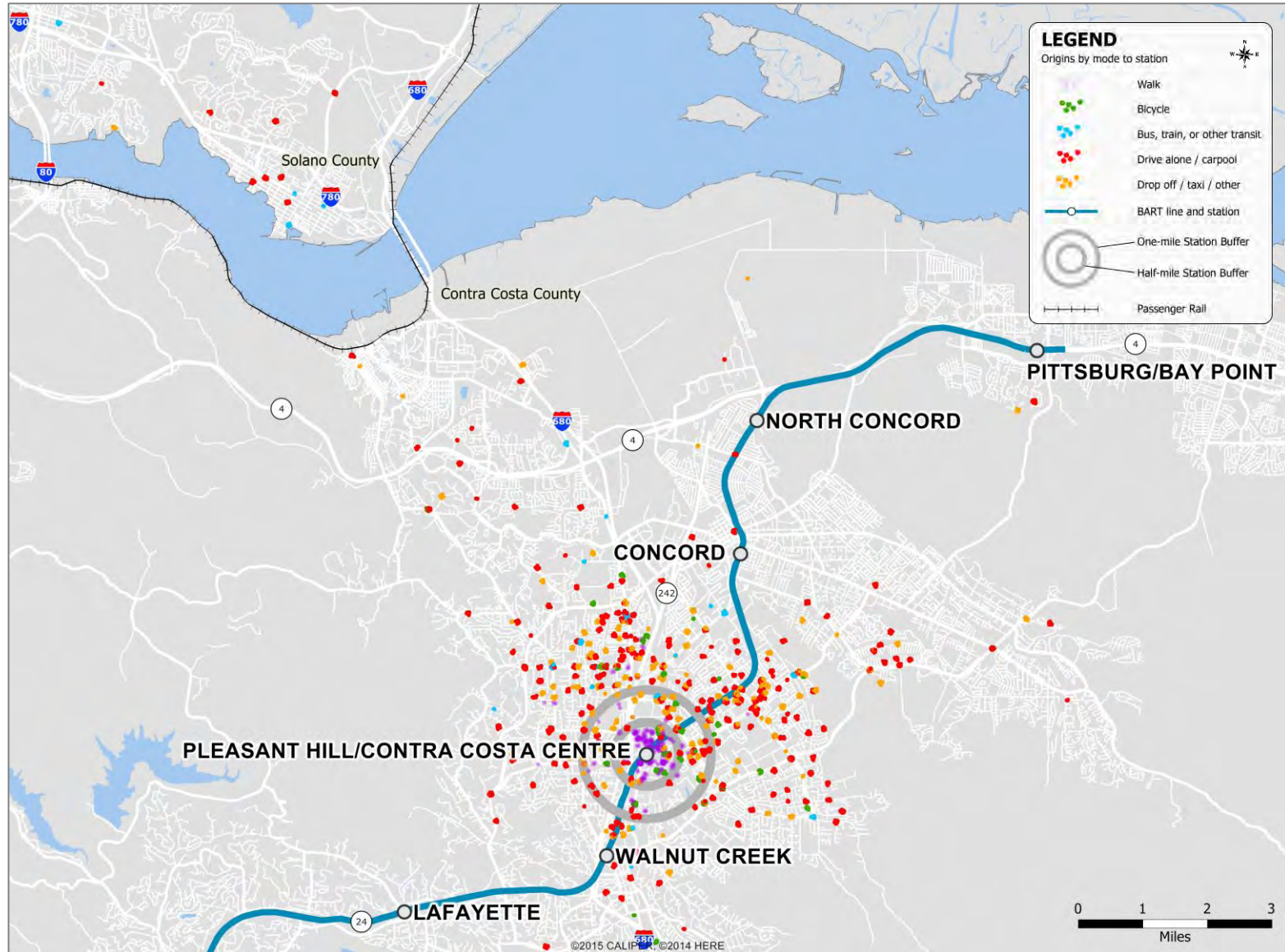
# Pittsburg / Bay Point Station: Home Locations of BART Riders by Mode



2015 BART Station Profile Study (weekday). Data are weighted to represent average weekday ridership. Weighted points are scattered around actual origin point. Scattering process may result in points appearing in bodies of water on some maps. The "Drive alone / carpool" category includes motorcycle, and "Drop off / taxi / other" includes app-based ridesharing services like Uber and Lyft.



# Pleasant Hill / Contra Costa Centre Station: Home Locations of BART Riders by Mode



2015 BART Station Profile Study (weekday). Data are weighted to represent average weekday ridership. Weighted points are scattered around actual origin point. Scattering process may result in points appearing in bodies of water on some maps. The "Drive alone / carpool" category includes motorcycle, and "Drop off / taxi / other" includes app-based ridesharing services like Uber and Lyft.

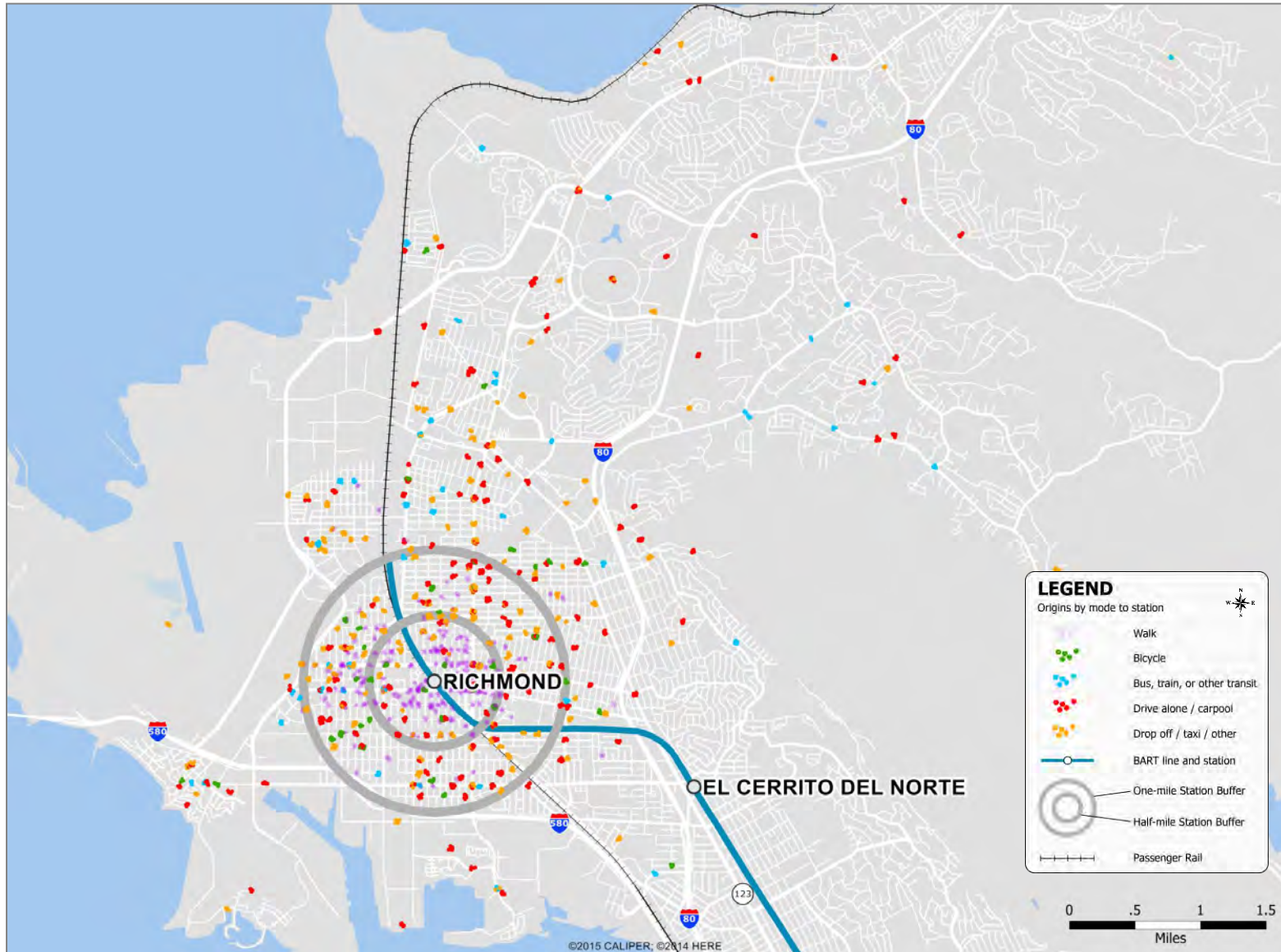
# Powell Station: Home Locations of BART Riders by Mode



2015 BART Station Profile Study (weekday). Data are weighted to represent average weekday ridership. Weighted points are scattered around actual origin point. Scattering process may result in points appearing in bodies of water on some maps. The "Drive alone / carpool" category includes motorcycle, and "Drop off / taxi / other" includes app-based ridesharing services like Uber and Lyft.

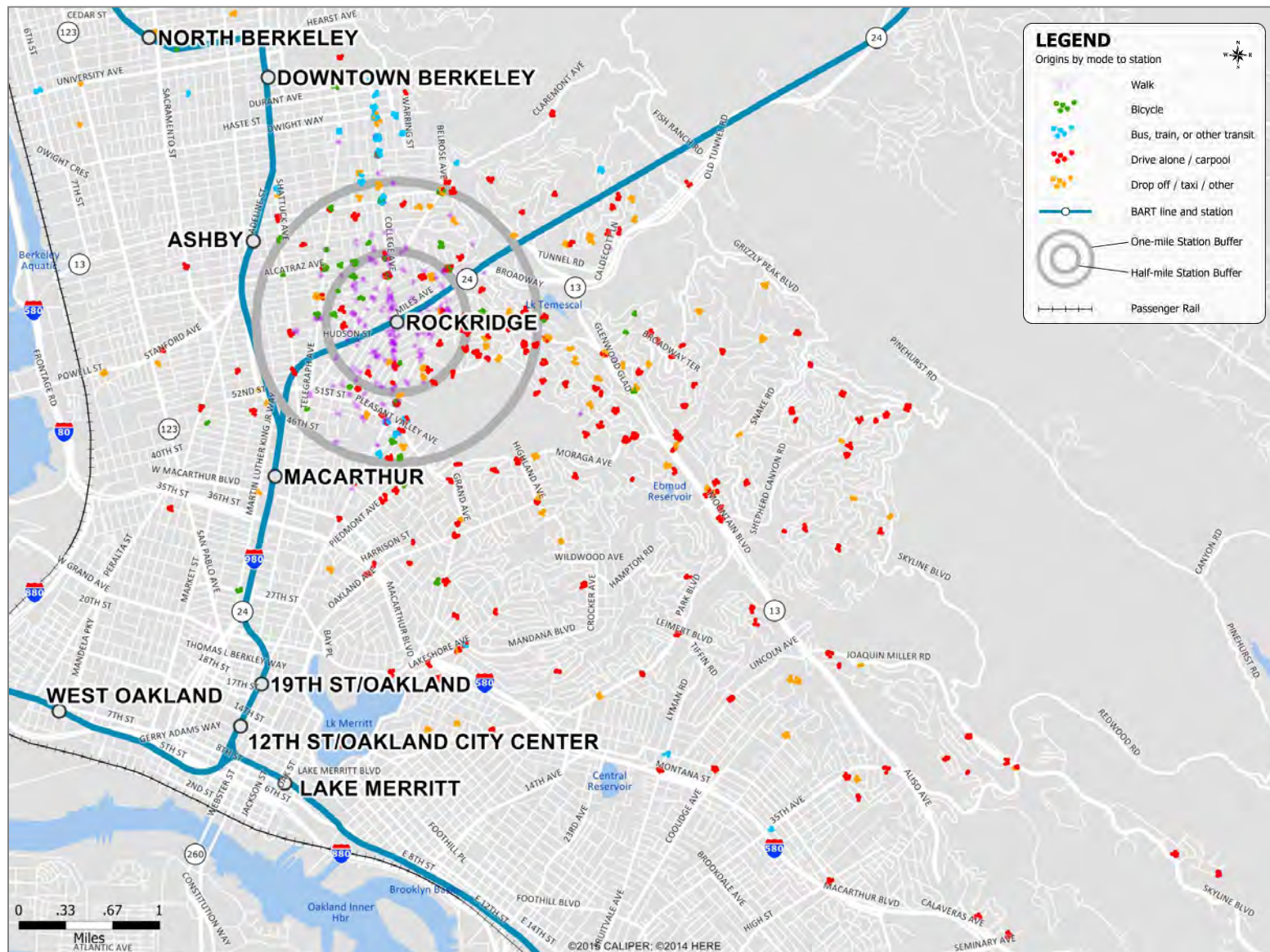


# Richmond Station: Home Locations of BART Riders by Mode



2015 BART Station Profile Study (weekday). Data are weighted to represent average weekday ridership. Weighted points are scattered around actual origin point. Scattering process may result in points appearing in bodies of water on some maps. The "Drive alone / carpool" category includes motorcycle, and "Drop off / taxi / other" includes app-based ridesharing services like Uber and Lyft.

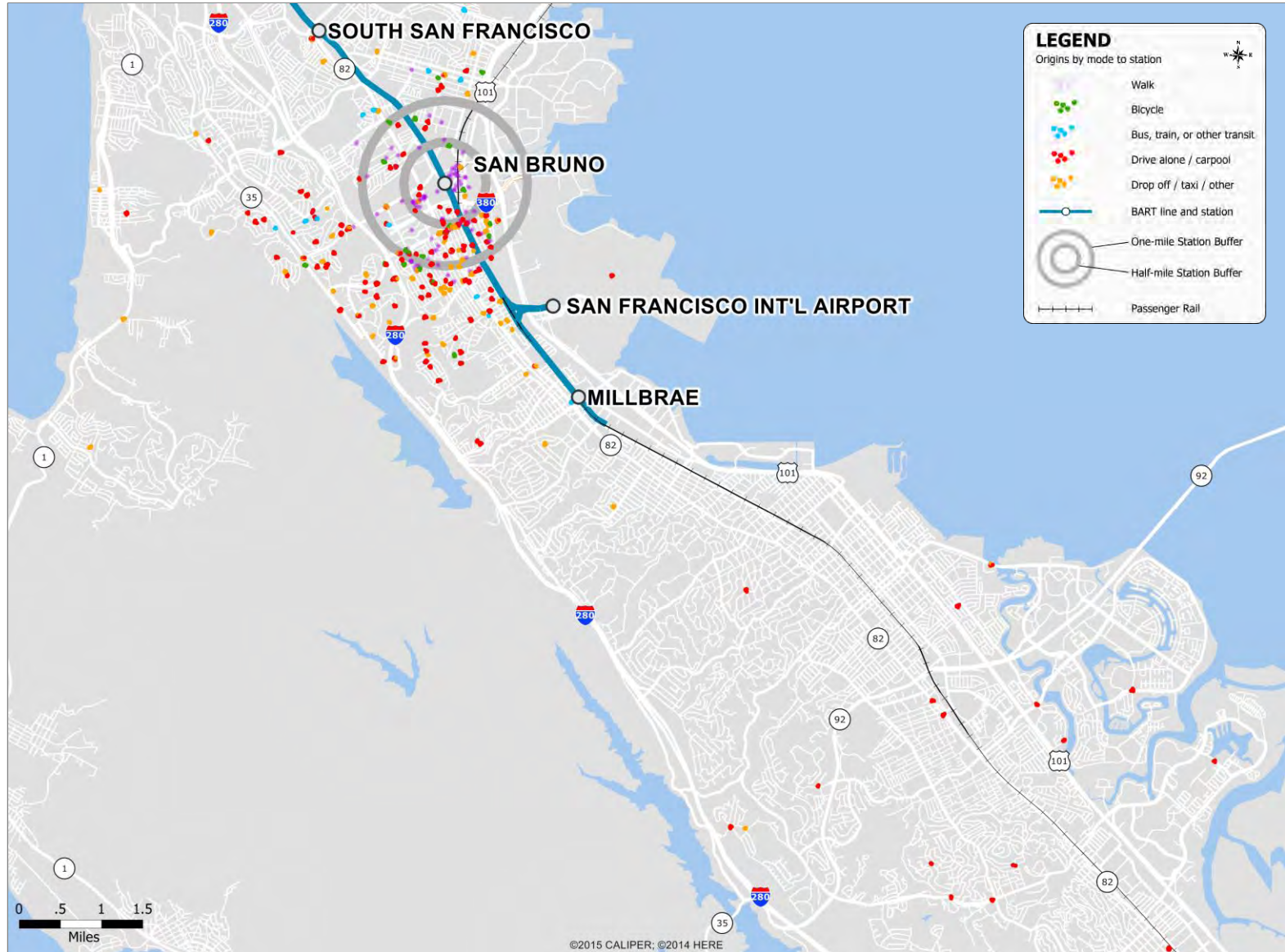
# Rockridge Station: Home Locations of BART Riders by Mode



2015 BART Station Profile Study (weekday). Data are weighted to represent average weekday ridership. Weighted points are scattered around actual origin point. Scattering process may result in points appearing in bodies of water on some maps. The "Drive alone / carpool" category includes motorcycle, and "Drop off / taxi / other" includes app-based ridesharing services like Uber and Lyft.

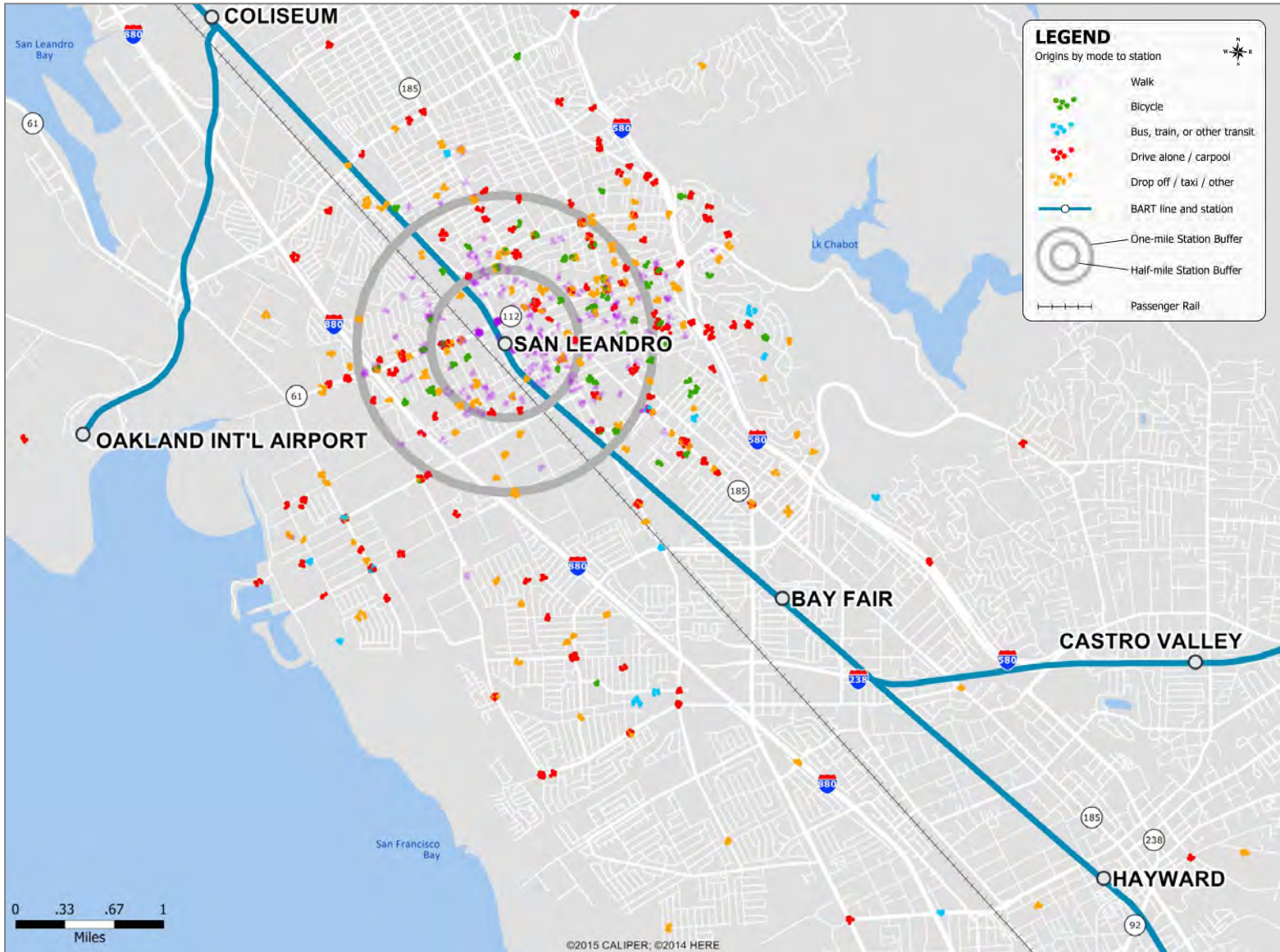


# San Bruno Station: Home Locations of BART Riders by Mode



2015 BART Station Profile Study (weekday). Data are weighted to represent average weekday ridership. Weighted points are scattered around actual origin point. Scattering process may result in points appearing in bodies of water on some maps. The "Drive alone / carpool" category includes motorcycle, and "Drop off / taxi / other" includes app-based ridesharing services like Uber and Lyft.

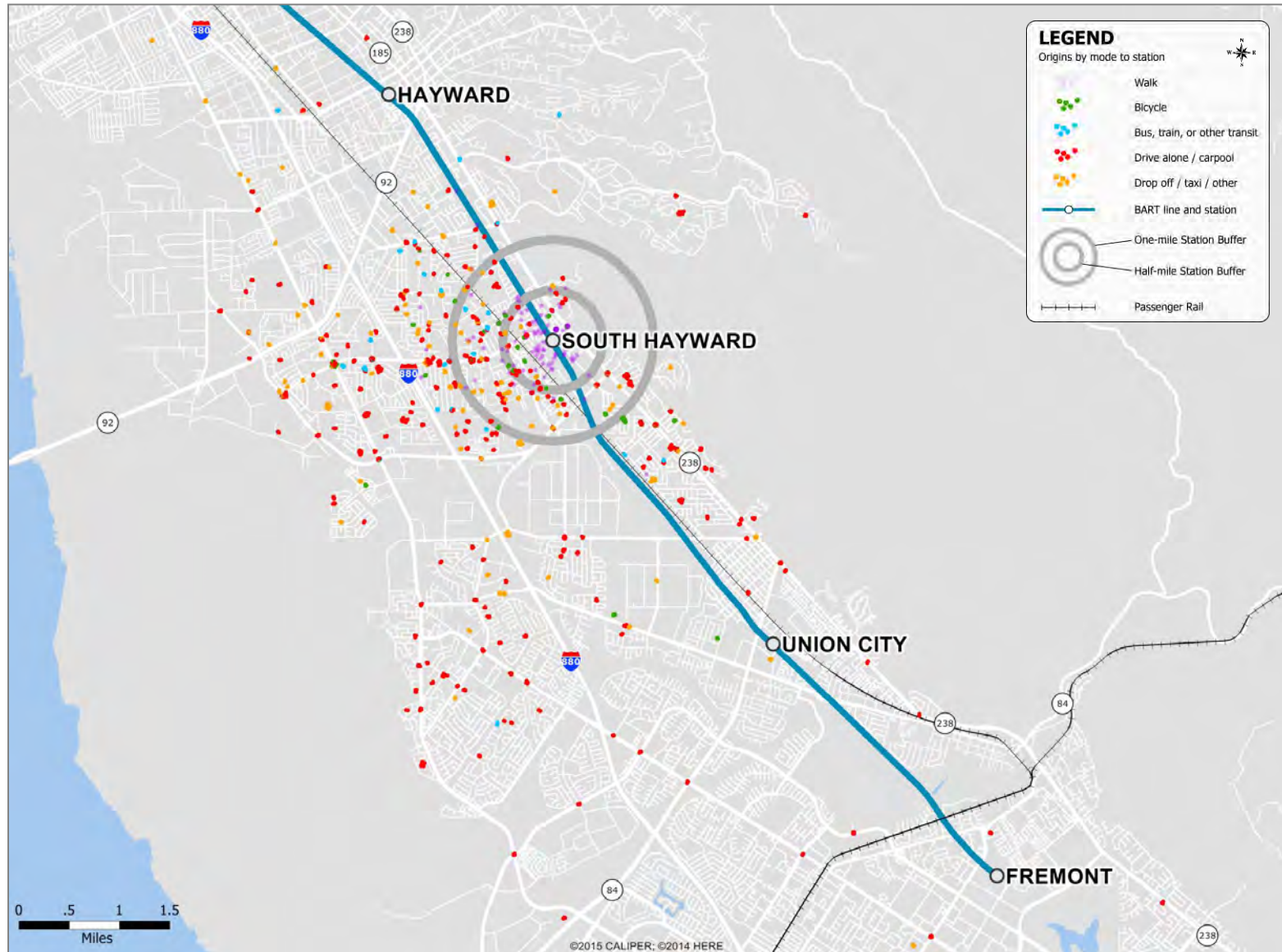
## San Leandro Station: Home Locations of BART Riders by Mode



2015 BART Station Profile Study (weekday). Data are weighted to represent average weekday ridership. Weighted points are scattered around actual origin point. Scattering process may result in points appearing in bodies of water on some maps. The "Drive alone / carpool" category includes motorcycle, and "Drop off / taxi / other" includes app-based ridesharing services like Uber and Lyft.

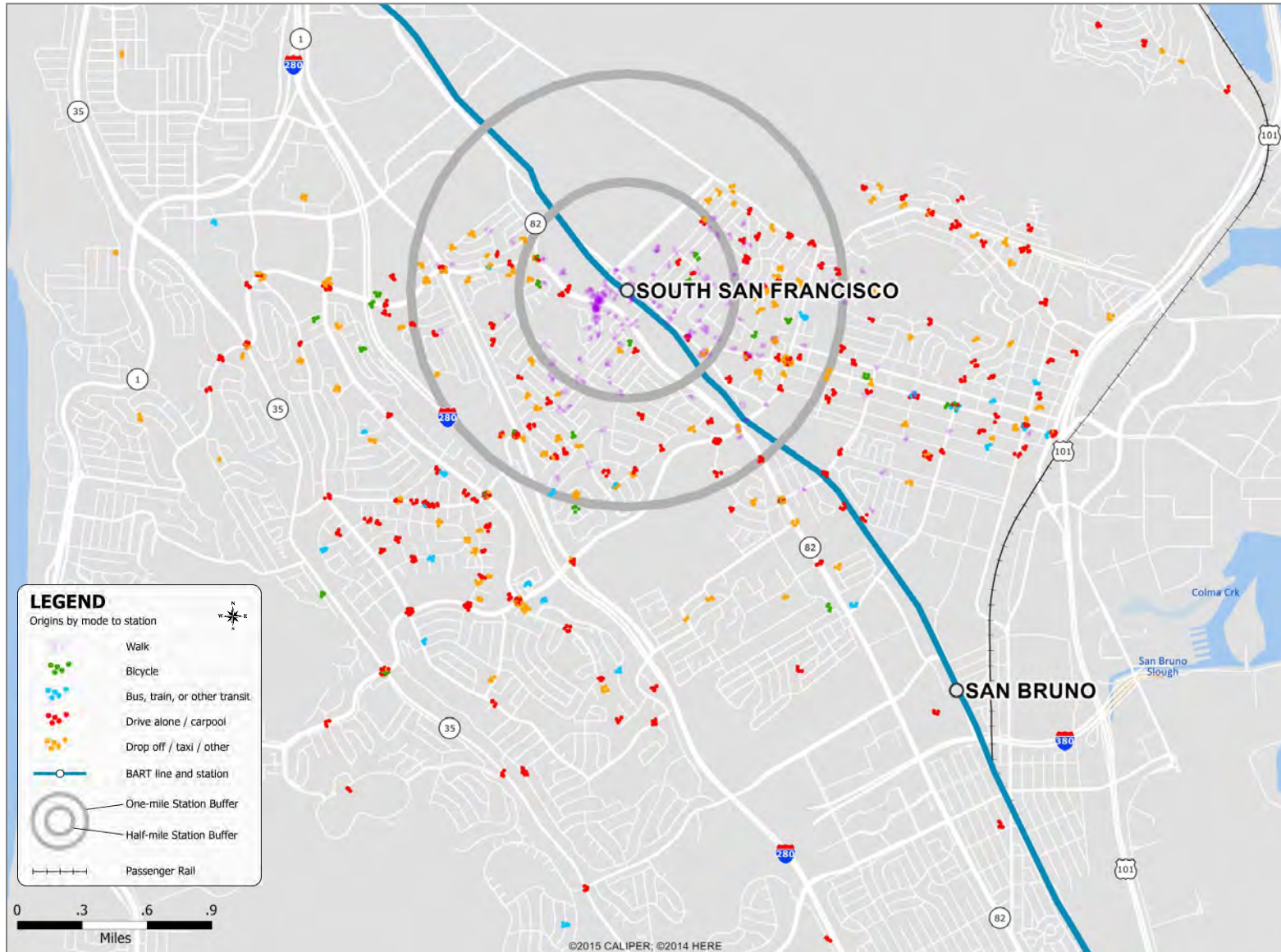


# South Hayward Station: Home Locations of BART Riders by Mode



2015 BART Station Profile Study (weekday). Data are weighted to represent average weekday ridership. Weighted points are scattered around actual origin point. Scattering process may result in points appearing in bodies of water on some maps. The "Drive alone / carpool" category includes motorcycle, and "Drop off / taxi / other" includes app-based ridesharing services like Uber and Lyft.

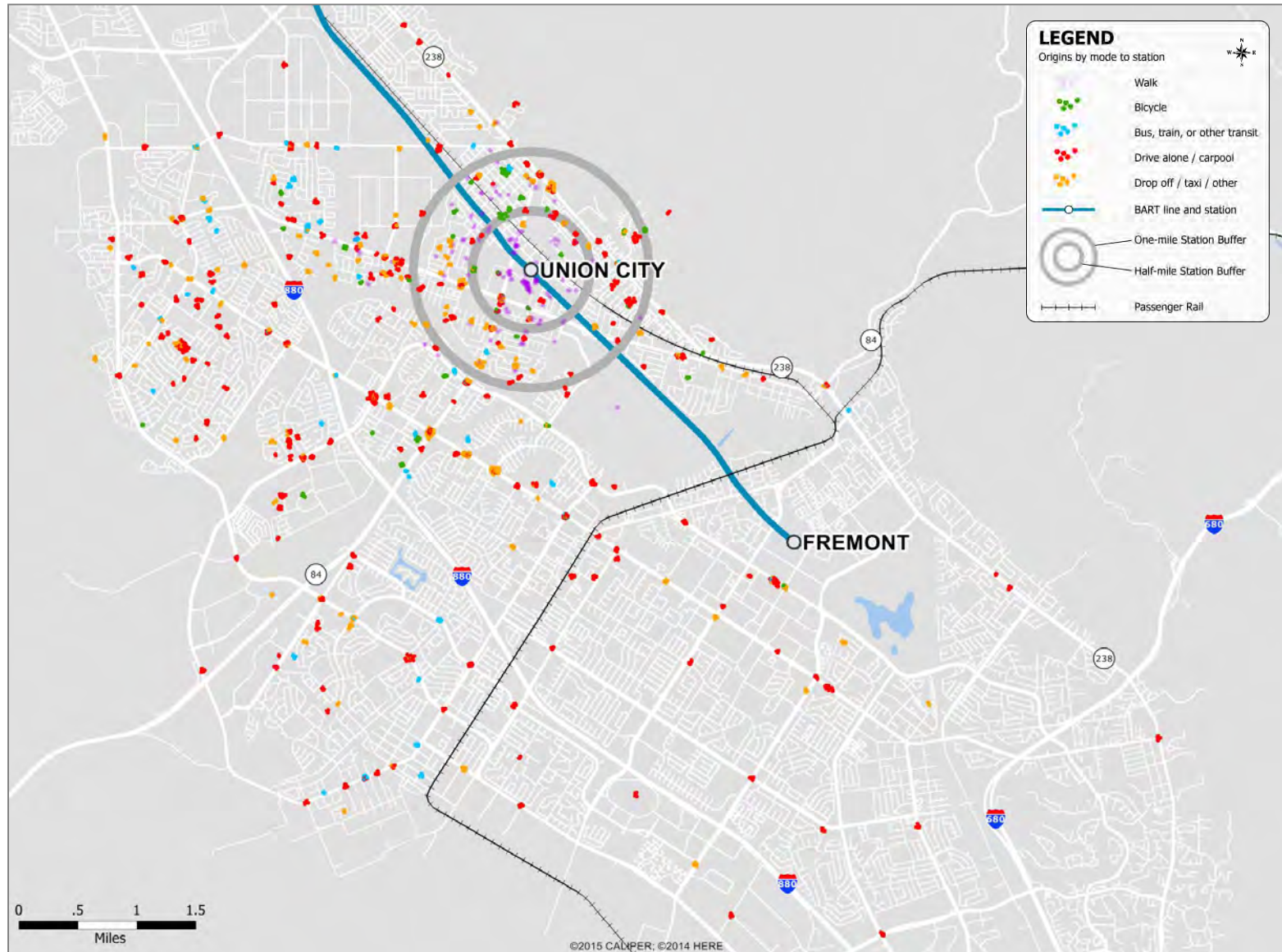
# South San Francisco Station: Home Locations of BART Riders by Mode



2015 BART Station Profile Study (weekday). Data are weighted to represent average weekday ridership. Weighted points are scattered around actual origin point. Scattering process may result in points appearing in bodies of water on some maps. The "Drive alone / carpool" category includes motorcycle, and "Drop off / taxi / other" includes app-based ridesharing services like Uber and Lyft.

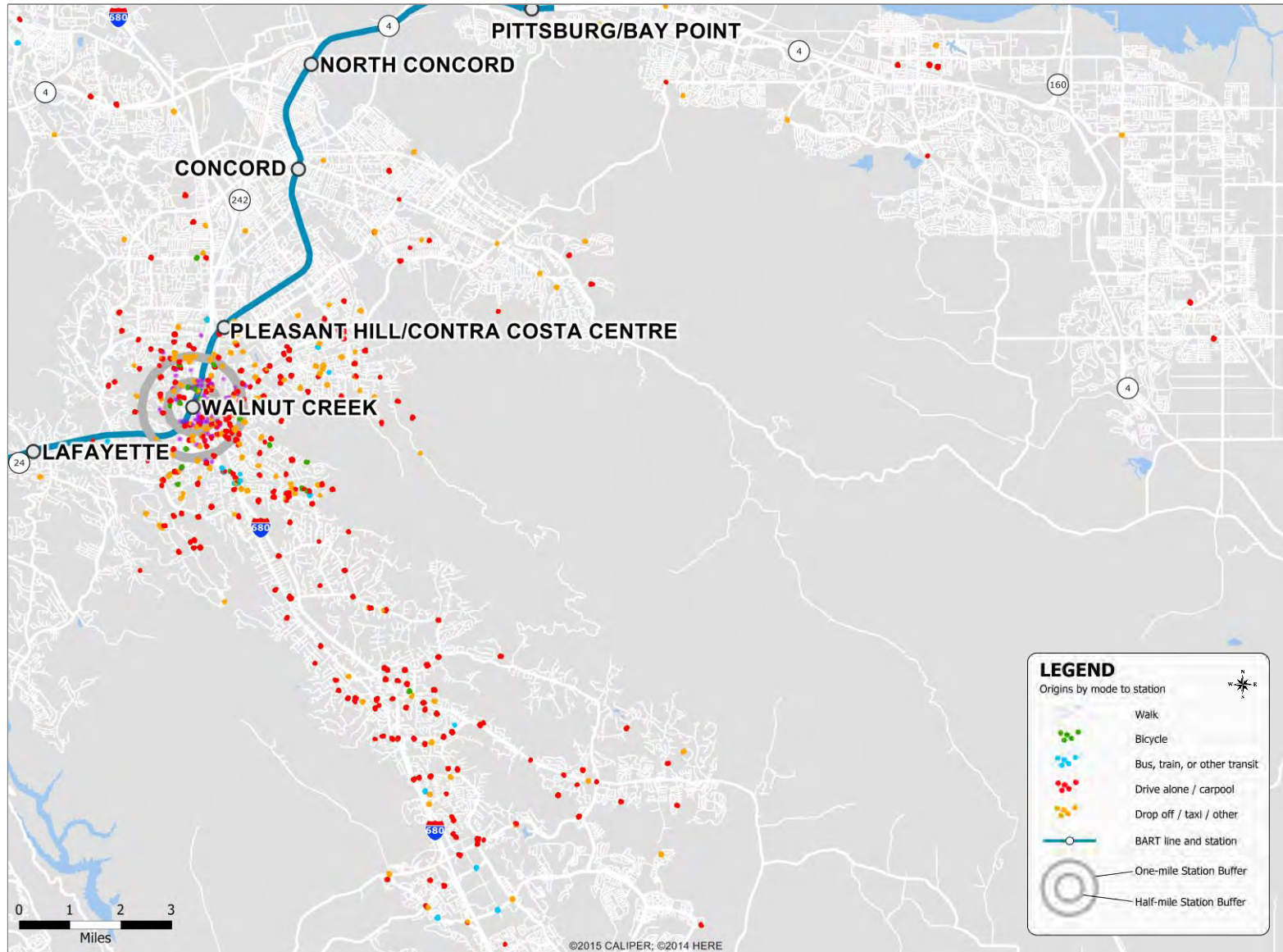


# Union City Station: Home Locations of BART Riders by Mode



2015 BART Station Profile Study (weekday). Data are weighted to represent average weekday ridership. Weighted points are scattered around actual origin point. Scattering process may result in points appearing in bodies of water on some maps. The "Drive alone / carpool" category includes motorcycle, and "Drop off / taxi / other" includes app-based ridesharing services like Uber and Lyft.

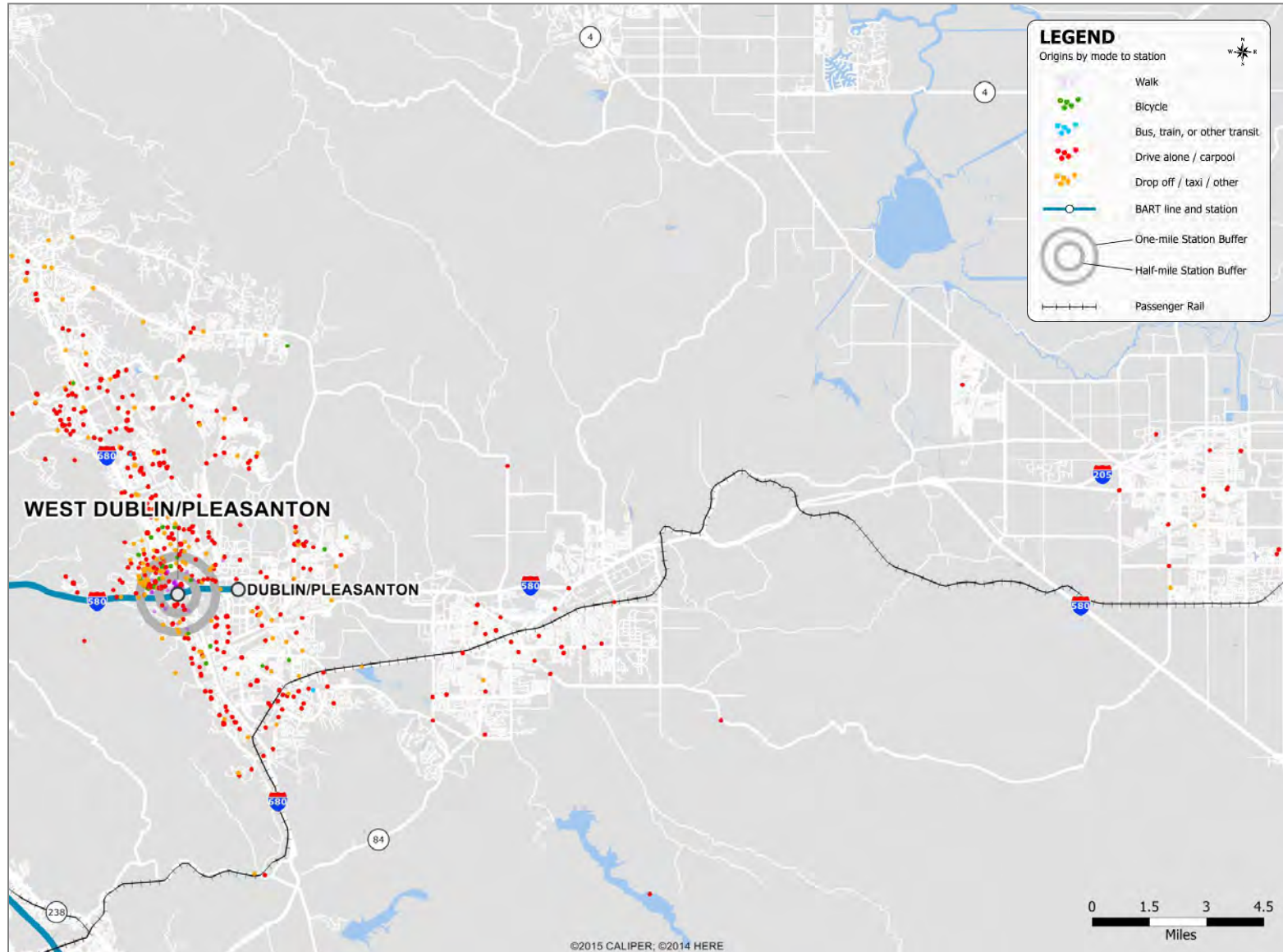
# Walnut Creek Station: Home Locations of BART Riders by Mode



2015 BART Station Profile Study (weekday). Data are weighted to represent average weekday ridership. Weighted points are scattered around actual origin point. Scattering process may result in points appearing in bodies of water on some maps. The "Drive alone / carpool" category includes motorcycle, and "Drop off / taxi / other" includes app-based ridesharing services like Uber and Lyft.

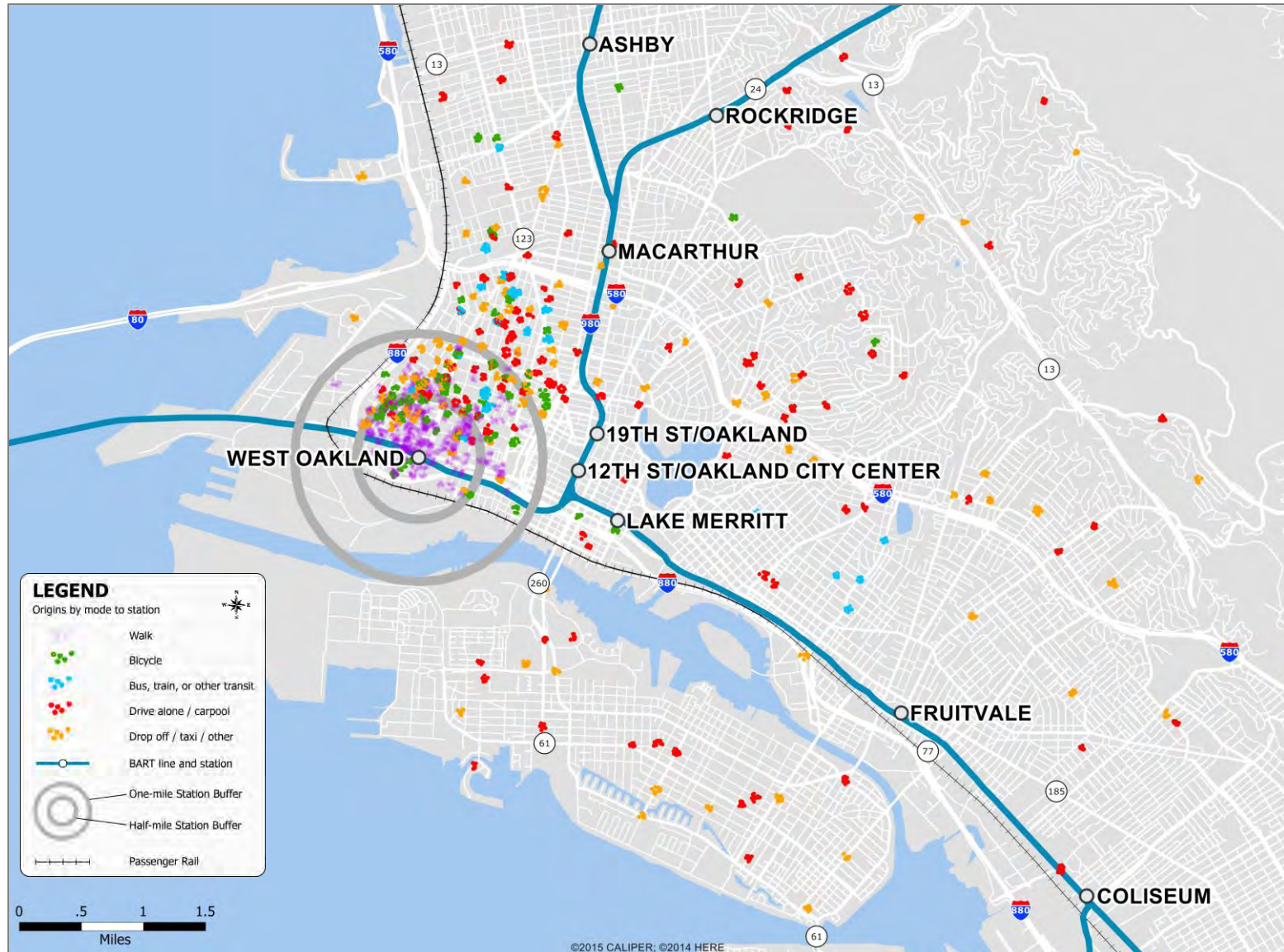


# West Dublin / Pleasanton Station: Home Locations of BART Riders by Mode



2015 BART Station Profile Study (weekday). Data are weighted to represent average weekday ridership. Weighted points are scattered around actual origin point. Scattering process may result in points appearing in bodies of water on some maps. The "Drive alone / carpool" category includes motorcycle, and "Drop off / taxi / other" includes app-based ridesharing services like Uber and Lyft.

# West Oakland Station: Home Locations of BART Riders by Mode



2015 BART Station Profile Study (weekday). Data are weighted to represent average weekday ridership. Weighted points are scattered around actual origin point. Scattering process may result in points appearing in bodies of water on some maps. The "Drive alone / carpool" category includes motorcycle, and "Drop off / taxi / other" includes app-based ridesharing services like Uber and Lyft.