



Earthquake Safety Program Construction Begins at Fruitvale Station

January 19, 2018

Dear Fruitvale Station/Fruitvale Village Community,

As part of BART's systemwide Earthquake Safety Program, **retrofit construction at BART's Fruitvale Station is estimated to begin the week of January 22, 2018.**

The Station will REMAIN OPEN for BART riders during construction. Overall construction work will be performed inside and around the Fruitvale Station, including Fruitvale Village plaza area, starting from the south-end. Activity will take place under the southern end of the BART alignment, located near 35th Avenue. The work will proceed in phases, working from the south end to the north end of the station. Please see the diagram on the next page for the general location of construction. Work areas will be fenced in, and you will see large equipment accessing the site such as dump trucks, drill rigs and lifts. *(Please note that a separate, private, residential construction is also underway on the west side of the station near 35th Avenue.)*

During construction, pedestrian access in and around the station will change periodically. Expect some traffic and parking impacts from time to time. Please watch for additional notices regarding upcoming construction. During construction, your cooperation in proceeding around work areas with caution and watching for signs with directional and safety information is appreciated. Noise and dust will be monitored, and local regulations will be enforced to minimize any inconveniences. A related project to retrofit the Coliseum Station is currently projected to begin in 2019. We apologize for the inconvenience. Our aim is to retrofit BART as quickly as possible, while maintaining BART service.

If you need language assistance services, please call BART's Transit Information Center at (510) 465-2278.

如需語言援助服務，請致電 BART 公共交通資訊中心，電話號碼為 (510) 465-2278.

Si necesita servicios de asistencia de idioma, llame al centro de información de tránsito del BART al (510) 465-2278.

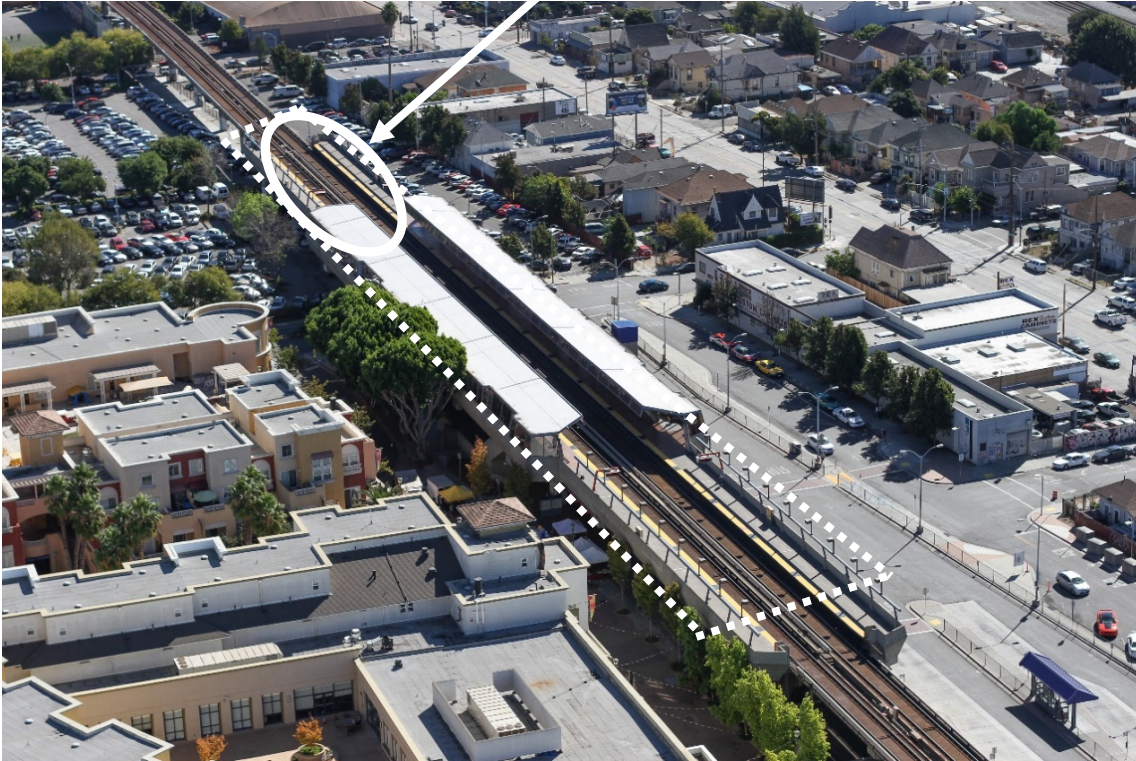
Project Information

☎ Call: (510) 874-7425

✉ Email: earthquakesafety@bart.gov



Earthquake Retrofit Activity -- Construction Work Location



BART EARTHQUAKE SAFETY PROGRAM (PROGRAMA
DE SEGURIDAD CONTRA TERREMOTOS DE BART)
P.O. Box 12688 (LKS-17)
Oakland, CA 94604-2688