



Earthquake Safety Program

Construction Begins at Coliseum Station

June 7, 2018

Dear Coliseum Station Community,

As part of BART's systemwide Earthquake Safety Program, retrofit construction at BART's Coliseum Station is estimated to begin mid-June 2018. Stage 1 work activity will take place under the south-end of the BART alignment, located near 73rd Avenue, parallel to San Leandro Street (See diagram on back.)

The Station will REMAIN OPEN for BART riders during construction. Overall construction work will be performed inside and around Coliseum Station, including the stairwell off San Leandro Street that connects to the pedestrian bridge (Coliseum Walkway). Work areas will be fenced in, and you will see large equipment accessing the site such as dump trucks, drill rigs and lifts. This work may cause some shifting of pedestrian walkways, temporary relocation of parking and delays along San Leandro Street near 73rd Avenue. Stage 1 is expected to last approximately six months.

General work hours are 7 am – 7 pm, Monday through Friday with limited night and emergency work as needed.

Please watch for additional notices regarding upcoming construction. During construction, your cooperation in proceeding around work areas with caution and watching for signs with directional and safety information is appreciated. All necessary measures to monitor noise and dust will be applied, and all regulations and codes will be enforced to minimize any inconveniences. A related project to retrofit the Fruitvale Station is also currently underway.

We apologize for the inconvenience. Our aim is to retrofit BART as quickly as possible, while maintaining BART service.

Project Information

☎ **Call:** (510) 874-7425

✉ **Email:** earthquakesafety@bart.gov

🌐 **Visit:** www.bart.gov/earthquakesafety

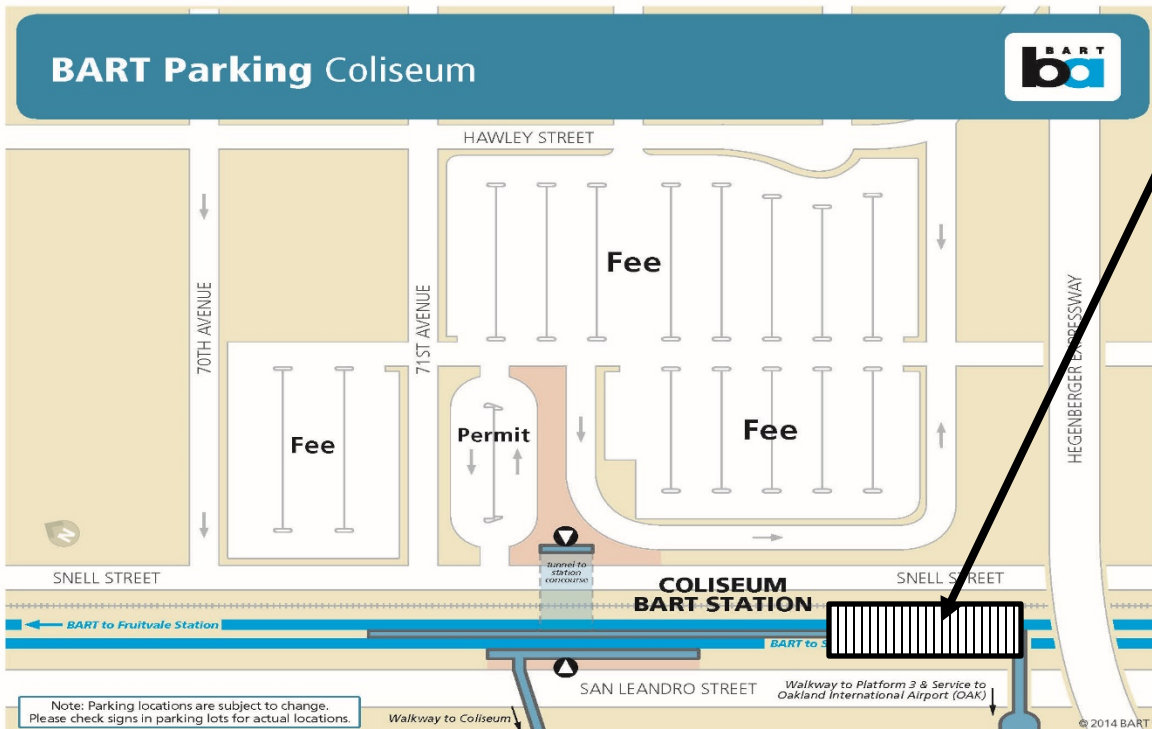
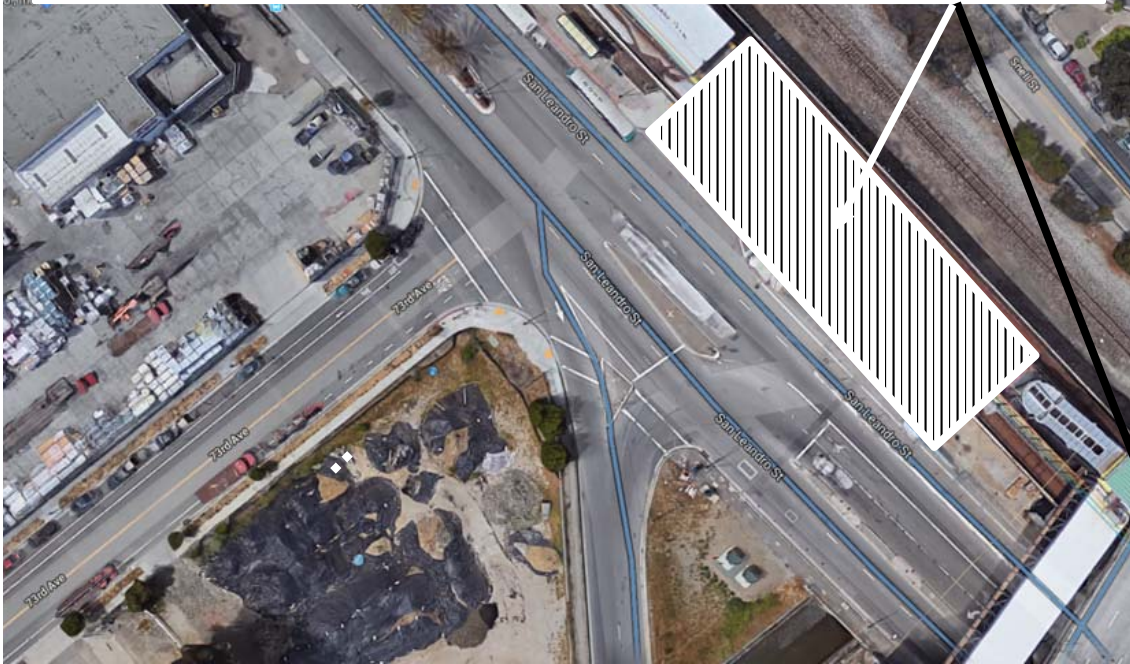
If you need language assistance services, please call (510) 464-6752.

Si necesita servicios de asistencia de idiomas, llame al (510) 464-6752.

如需語言協助服務，請致電 (510) 464-6752。

Earthquake Retrofit Construction Work Area

(Aerial and BART map views of work area)



BART EARTHQUAKE SAFETY PROGRAM
(PROGRAMA DE SEGURIDAD CONTRA TERREMOTOS DE BART)
P.O. Box 12688 (LKS-17)
Oakland, CA 94604-2688