



Safe Routes to BART (SR2B) Grant

Application webinar (June 12, 2020)

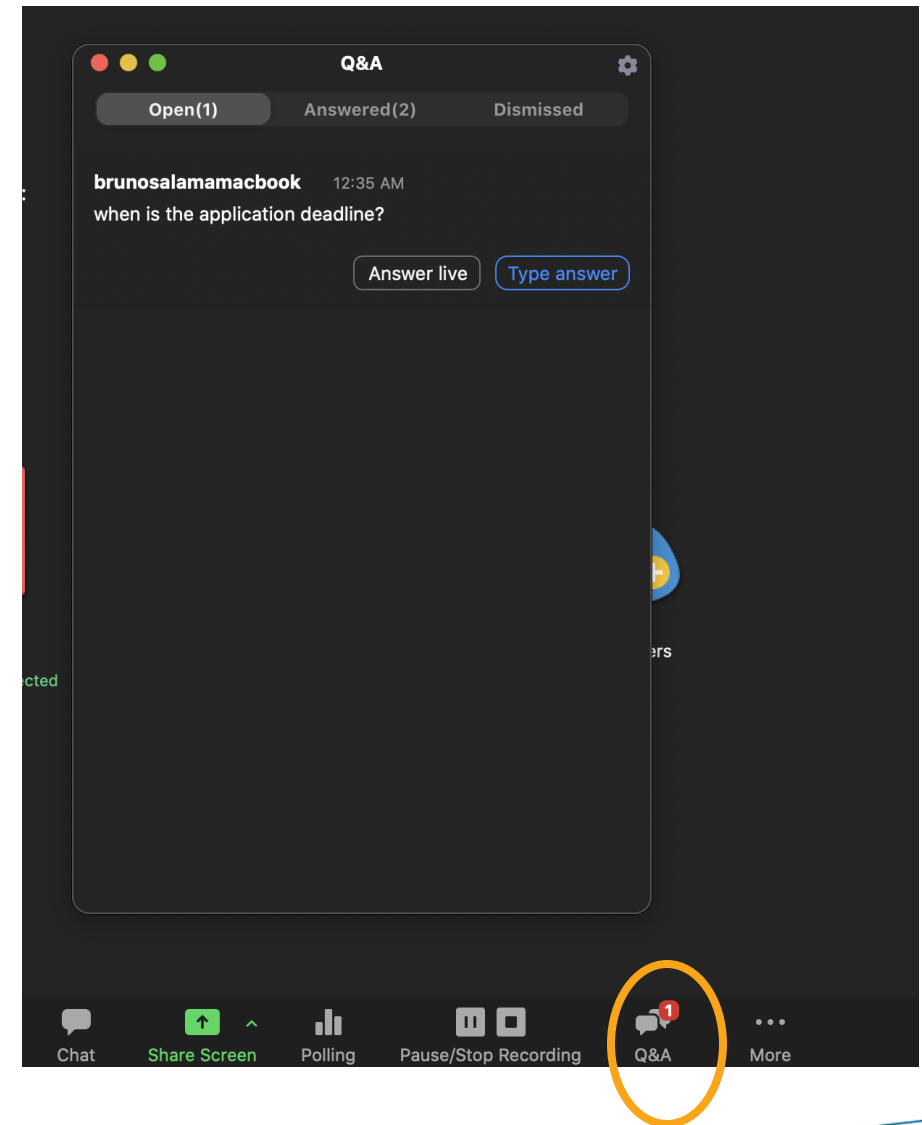


Agenda

Webinar Housekeeping	10:30-10:35
SR2B Program Overview + Q&A	10:35-10:50
Eligibility + Q&A	10:50-11:00
Criteria and Selection Process + Q&A	11:00-11:20
Application process + Q&A	11:20-11:35
Q&A	11:35-12:00

Webinar Housekeeping

- Meeting will be recorded
- Slides and recording will be posted on www.bart.gov/SR2B early next week
- Participants will be muted until called on during Q+A
- Use "Raise Hand" feature
- Q&A Feature vs. Chat
- We will pause after each section for Q+A
- We will try to get to as many questions as possible. If not answered during the webinar:
 - Send to Rachel Factor at sr2b@bart.gov
 - Posted they will be answered in an FAQ section of the www.bart.gov/SR2B



BART Station Access Policy Goals



A. Safer, Healthier, Greener. *Advance the region's safety, public health, and greenhouse gas (GHG) and pollution-reduction goals.*



B. More Riders. *Invest in station access to connect more riders cost effectively, especially where and when BART has available capacity.*



C. More Productive and Efficient. *Manage access investments, programs, and current assets to achieve goals at the least cost.*



D. Better Experience. *Be a better neighbor, and strive for an excellent customer experience, including on the first and last mile of the trip to and from BART stations.*



E. Equitable Services. *Invest in access choices for all riders, particularly those with the fewest choices.*

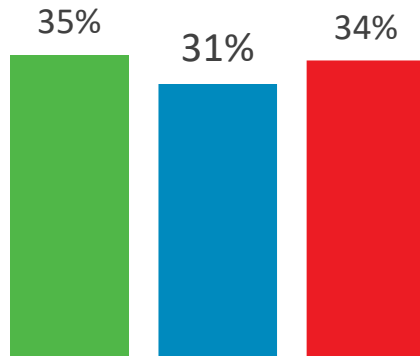


F. Innovation and Partnerships. *Be an innovation leader, and establish durable partnerships with municipalities, access providers, and technology companies.*

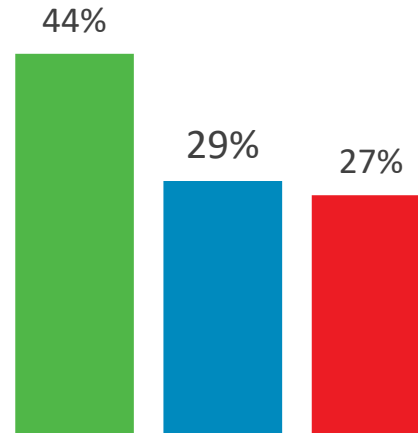
BART Board adopted June 9, 2016

Access Mode Share Targets (home-based trips)

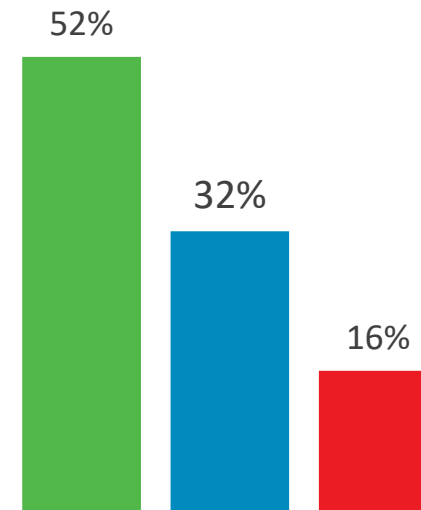
2008 ACCESS
MODE SHARE



2015 ACCESS
MODE SHARE



2025 TARGET
ACCESS MODE SHARE



Active Access: Walk, Bike

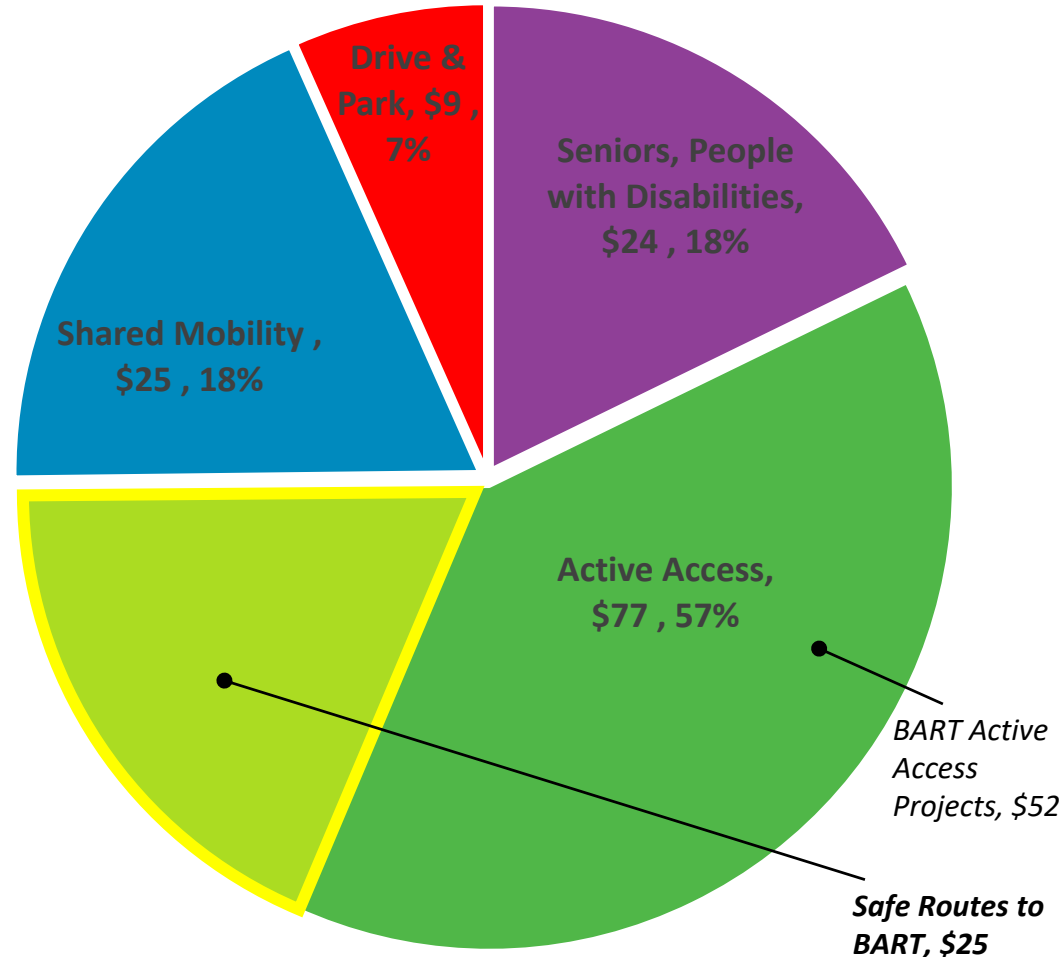
Shared Mobility: Transit, Shuttle, TNC, Drop-Off, Carpool

Drive & Park: Drive Alone

Source: 2008 and 2015 Station Profile Survey Data

Intended Allocation by Mode (\$135M)

- Access program is 4% of \$3.5B Measure RR funds
- Invest to meet 2016 Access Policy objectives
 - Safe, healthier Greener
 - More Riders
 - More Productive and Efficient
 - Better Experience
 - Equitable Services
 - Innovation and Partnerships
- Invest to meet mode share targets
 - Increase active access from 44% to 52%
 - Decrease parking access from 27% to 16%



Safe Routes to BART Program

Overview: Help partner agencies implement active transportation capital projects off BART property to support BART's Access Policy, expand station access choices and make it safer and easier for all riders to use the system.

Program Goals:

1. **Project Readiness:** Deliver near-term, enduring active access improvements to real property that demonstrate a clear nexus to a BART station.
2. **Mode Shift:** Expand opportunities to access BART stations with potential to shift people from driving and parking to walking and biking.
3. **Stakeholder Support:** Collaborate with local partners to create more sustainable communities.
4. **Equitable:** Provide equitable access for disadvantaged communities.
5. **Safety:** Enhance personal safety and security; add to passenger comfort and sense of place.
6. **Complete communities:** Promote Transit-Oriented Development (TOD).
7. **Leverage:** Leverage other funding sources to deliver improvements.

SR2B Schedule

Activity	Date
Launch	5/28/2020
Webinar	6/12/2020
Application Deadline	7/23/2020 @ 2 PM
Project selection	Summer 2020**
Notice of award	Fall 2020**
Execute funding agreements	Fall 2020**

** Specific dates will be provided at a later time.

SR2B Basics

Funding:

- Grant program of up to approximately \$25M
- Number & frequency of cycles: TBD
- First cycle: Around \$5M
- Around \$0.5M to \$1.5M/agreement/cycle
- Funds must be used for **construction phase only (including construction management)**

Number of applications and applicants:

- 1 project submission/BART station/applicant/cycle
- Applicants may co-sponsor a proposed project with one or more agencies
- Applicants may also substitute one station specific application for a multi- station intervention type

Project Sponsor responsibility:

- Project Sponsors are responsible for permitting, environment documentation, construction, and operations & maintenance

SR2B Basics (continued)

Grant awards & agreement:

- Agreement template and exhibits will be posted on www.bart.gov/SR2B at a later date
- Certification that all complementary fund sources are committed to the project
- Small business participation

Reporting & monitoring:

- Initial Project Report (IPR)
- Quarterly Progress Reports

Project evaluation:

- BART will evaluate project impacts

Q&A



Eligibility

Eligible applicants:

- Public agencies from Alameda, Contra Costa & San Francisco counties
- Evidence of demonstrated support
- Funding plan
- Verification of programmed and proposed funding
- Minimum match: 30%
 - Does not include staff time

Eligible projects:

- Located within 3 counties
- Meet SR2B goals
- Minimum of 35% design complete
- Delivery plan (schedule & major milestones)
 - Up to 3.5 years of funding agreement
 - Up to 1.5 years from construction NTP
- Proposed projects may be part of a larger project

Eligible Improvements & Examples



Eligible Costs

Eligible costs:

- Construction only
 - May include Construction Management
- Directly related material, equipment rental
- Fixtures (permanently affixed)
- Labor charges directly related to construction
- Permit fees

Ineligible costs:

- Work conducted prior to funding agreement
- Feasibility and planning studies
- Design
- Operations & maintenance
- Costs not directly related to construction
- Equipment that can be moved (computers, chairs)
- Grant administration

Q&A



Application Evaluation

- Selection committee
 - BART staff
 - External members
- GM approves final grant awards
- Board update

Selection Criteria	Station Access Policy Goals	Weight
Project Readiness	C. More Productive & Efficient	20%
Connectivity and Mode Shift	A. Safer, Healthier, Greener B. More riders D. Better Experience	20%
Customer Experience, Safety and Security	D. Better Experience	15%
Equitable Access	E. Equitable Services	15%
Complete Communities	D. Better Experience B. More riders	10%
Partnerships	F. Innovation & Partnerships	10%
Leveraged Funding	C. More Productive & Efficient	10%

Project Readiness (20%)

What we are looking for:

- Deliver near-term, enduring active access improvements demonstrating a clear nexus to a BART station
- “Shovel ready” projects with final design, but have a construction funding gap
- The project is a permanent improvement that will likely be completed in up to 3.5 years

To score well:

- Proposed projects are ready for construction and will be complete in 1.5 years from NTP
- Environmental review is complete and mitigation strategies are in place

Required documents:

- Appendix B: Cost Estimate, Funding Plan, Budget Narrative & Schedule



Connectivity & Mode Shift (20%)

What we are looking for

- Enhance customer experience through improved connectivity for pedestrians and cyclists to safely access BART stations, with the goal of increasing the number of people who walk and bike to BART

To score well

- Demonstrate potential to shift people to active access
- Demonstrate a potential for a high level of use
- Address a significant gap/barrier
- Significantly extend an existing high-quality pedestrian and/or bike network

Helpful hints

- Applicants are encouraged to use quantitative analysis, mapping and/or other data sets to respond
- Refer to station and access design best practices

Resources

- Street & access design best practices
- Access plans
- Mode shift and demand analysis
- GIS mapping and
- Other data sets



Customer Experience, Safety & Security (15%)

What we are looking for

- Enhance personal safety and security, improve user comfort and sense of place

To score well

- Demonstrate how project addresses a known or community-identified safety or security issue
- Strive to eliminate traffic fatalities and severe injury collisions, meeting the cities' Vision Zero policy goals where applicable
- Make connections to BART simpler or more intuitive, save time for BART patrons

Helpful hints

- Applicants are encouraged to use mapping and/or other data sets to respond

Resources

- Street and access design best practices
- Collision data
- GIS mapping
- Other data sets



Equitable Access (15%)

What we are looking for

- Provide equitable access for disadvantaged communities
 - Disadvantaged communities include but are not limited to or entirely inclusive of low-income households, people of color, immigrants, people with disabilities, people without access to a private vehicle, youth, or senior citizens

To score well

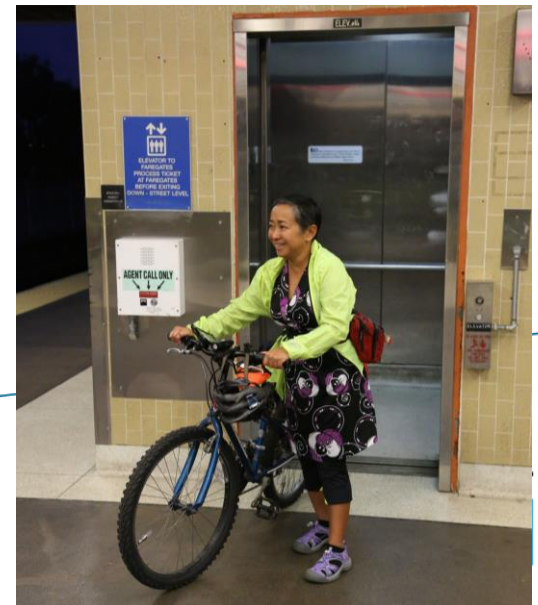
- Proposed project is located in an area where 25.9% or more of households have income levels below 200% of the 2019 Federal Poverty Guidelines
- At a minimum, the applicant must show how the proposed project will improve active access for members of disadvantaged communities

Helpful hints

- BART's demographic mapping and reference tables are essential to answer the first question

Resources

- BART demographic maps and tables in Appendix A
- MTC Communities of Concern
- Other resources



Complete Communities (10%)

What we are looking for

- Promote Transit-Oriented Development (TOD) and complete communities

To score well

- The existing land-use context within a 1/4 mile of the proposed project meets or exceeds key targets established in BART's 2017 TOD Guidelines for density, height, bike and auto parking

OR

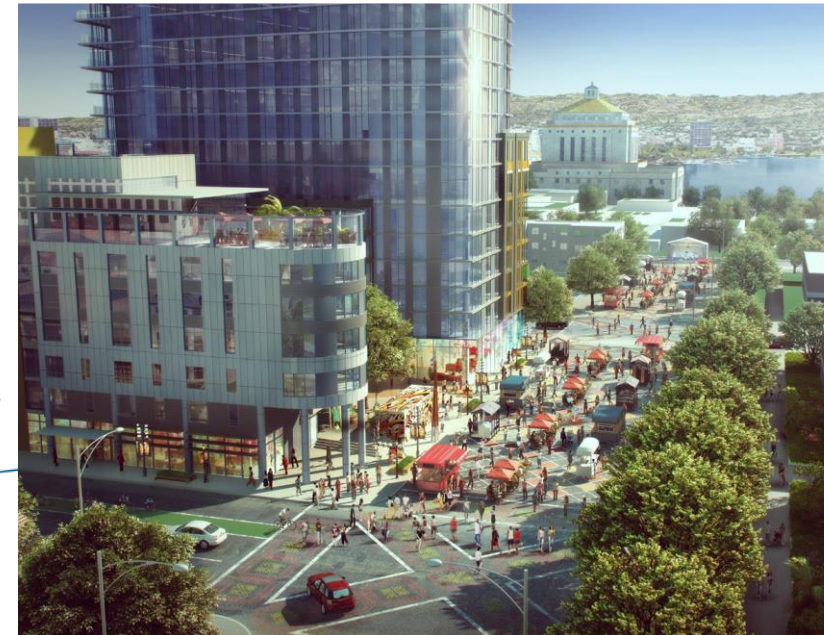
- Show that land use and zoning regulations are under way to support future development of TOD (e.g. station area plans, agreements prioritizing development)

Helpful hints

- BART's 2017 TOD Guidelines is essential to answer questions
- Consult with the Planning, Housing (or similar) departments engaging with BART on the Assembly Bill 2923 work

Resources

- BART's 2017 TOD Guidelines (link in Appendix A)
- General & station areas plans



Partnerships (10%)

What we are looking for

- Projects to show collaboration with local partners to create more sustainable communities

To score well

- Project is high priority, as evidenced by identification in earlier planning documents, and significant and diverse stakeholder engagement and letters of support and/or resolution

Helpful hints

- Include additional letters of support
- If applicable, document with links to plans where proposed project has been identified



Leveraged Funding (10%)

What we are looking for

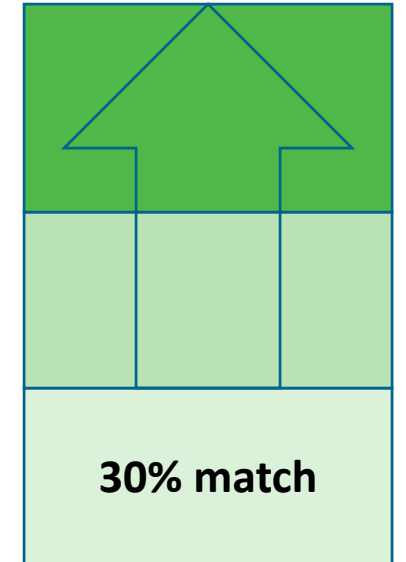
- All funding in place to deliver the project or a realistic plan in place to secure the funding

To score well

- The more funding the project brings to the table, the higher the score it will receive

Required documents

- Appendix B: Cost Estimate, Funding Plan, Budget Narrative & Schedule
- Verification of all programmed and proposed funding in the application



Q&A



Application: Online Submission

- Application packages **must** be submitted to BART electronically through Submittable software by **July 23, 2020**
 - Create a free Submittable account
 - Be sure the email address you use is one that you check regularly
- Need Help?
 - Technical assistance from Submittable via phone, email and chat, listed on the first page of the SR2B submission page.
 - Send your email to Rachel Factor at sr2b@bart.gov for application content questions



Safe Routes to BART (SR2B) Application

Ends on

Welcome! Applying for Safe Routes to BART?

If you are looking for the application form for the SR2B program, you are in the right place. Application packages must be submitted to BART electronically through this website, *Submittable*.

- You will need to create a *free Submittable account* in order to submit to these forms.
- You can save a draft of your work if you would like to finish filling out the form at a later date.
- Questions marked with a red asterisk are required.
- We will follow-up with you about your submission by email. Please be sure the email address you used to sign up for your Submittable Account is one that you check regularly.
- BART is currently accepting project proposals from eligible public agencies in Alameda, Contra Costa and San Francisco counties.
- **The application deadline is July 23rd, 2020 at 2PM.**

For guidance and forms for completing this application, please refer to the "SR2B Grant Program Guidelines for the FY 2020/2021 Cycle" in the [Application Materials Section](#) of [BART's SR2B Call for Projects](#) page. Before diving into the application process, we encourage potential applicants to review all of the materials in the Application Materials section of the grant's [Call for Projects](#) web page. Doing so will give you a sense of what resources and talent the application will require of your agency.

Technical questions? Contact Submittable's Customer Support team at support@submittable.com

Questions about the grant? Contact the Safe Routes to BART team at SR2B@bart.gov

We use Submittable to accept and review our submissions.

Create Your Account

Have An Account? Sign In



Sign Up

Sign In

Welcome!

Create your free Submittable account to get started.

Email

Password

Confirm Password

First name

Last name

Sign Up

 Powered by Submittable

Application: Hot Tips

- Review all relevant materials:
 - SR2B Website
 - SR2B Grant Program Guidelines for the FY 2020/2021 Cycle
 - Appendix A - Screening and Evaluation Criteria
 - Appendix B - Cost Estimate, Funding Plan, Budget Narrative and Schedule
 - Appendix C - Sample Invoice
 - SR2B Grant program addenda
- Note the resources, talent and info needed and plan ahead:
 - Public Works, Transportation, Land Use, Planning, etc
 - Full reproduction of the online application form included in Section 11 in Appendix A - [Screening and Evaluation Criteria](#) of the [SR2B Grant Program Guidelines](#).
 - Necessary documentation (letters, proof of right-of-way control, etc.)
 - You can save a draft of your work and complete at later date(s)
 - Questions marked with a red asterisk (*) are required. Submittable will flag and prevent you from final submission if missed or skipped.

Application Content

1. Eligibility Self Review
2. Applicant Info
3. Project Info
4. Project Readiness

Other Criteria-Specific Questions and Documentation

5. Connectivity and Mode Shift
6. Customer Experience, Safety and Security
7. Equitable Access
8. Complete Communities
9. Partnerships
10. Supplemental Documents- required and optional
11. Certification of application by Authorized Representative of Applicant Agency

Application Content: Documentation

Documentation	Required	Details
Map(s) of project area	X	PDF format only, 3 file limit
35% (minimum) design set drawings of the proposed project	X	PDF format only, 5 file limit
Other relevant project graphics and photographs		PDF format only, 5 file limit
Letter of Commitment or Resolution	X	PDF format only, 1 file limit
Letter of Support from an active transportation citizen's committee or advocacy organization	X (if applicable)	PDF format only, 1 file limit
Letter of Funding Verification	X	PDF format only, 1 file limit
Proof of Right of Way Control	X	PDF format only, 1 file limit
Environmental Approvals	X (if applicable)	PDF format only, 1 file limit
Plans	X (if applicable)	PDF format only, 1 file limit
Additional Letters of Support		PDF format only, 10 file limit
Any Additional Information		PDF, XLS, 10 file limit

Q&A



