

# **BART Transit Operations Facility and Lake Merritt Station Plaza**

# agenda

## **1. Welcome!**

- a. Introductions
- b. TOD Update
- c. Artist Update

## **2. Plaza and Transit Operations Facility Project Design Presentation**

## **3. Detailed Design Discussion**

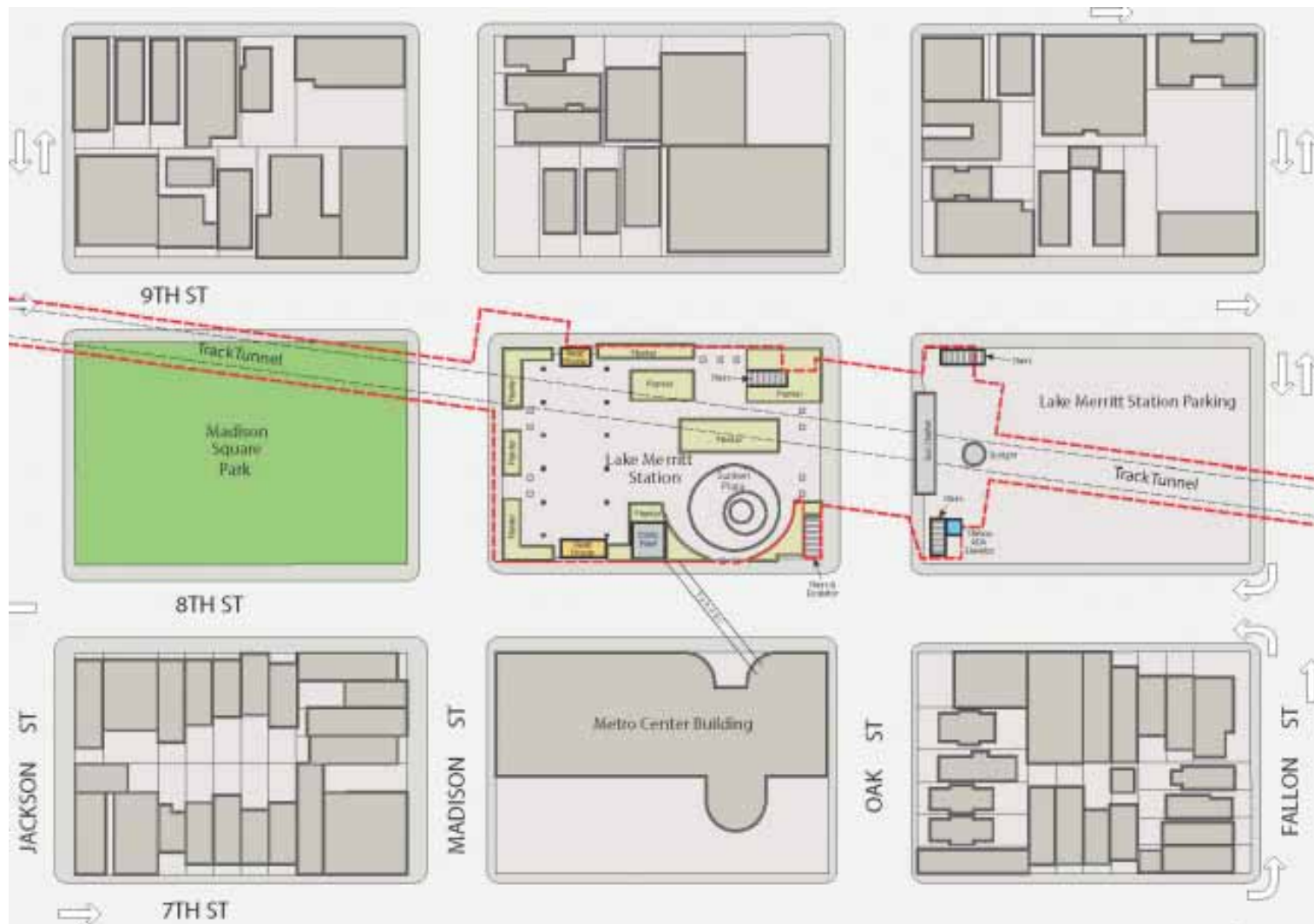
- a. Plaza Elements
- b. Building Facade and Retail
- c. Streets

## **4. Summary and Next Steps**

# landscape

# context plan

## BART



# today's plan

AECOM

## program key

1 central community plaza (15,000 sq ft)

2 sculptural shade canopy

3 public bike station

4 go bike parking

5 access to concourse

6 community terraces

7 central axis

8 bioretention planters

9 raised planters with native plant mix

10 public bike lockers

11 sculptural seating

12 access ramp

13 retail wrap

14 security planters

15 loading zone

16 cafe terrace

17 bus stop

18 short term TOF bike parking (in building)

19 operable bollards

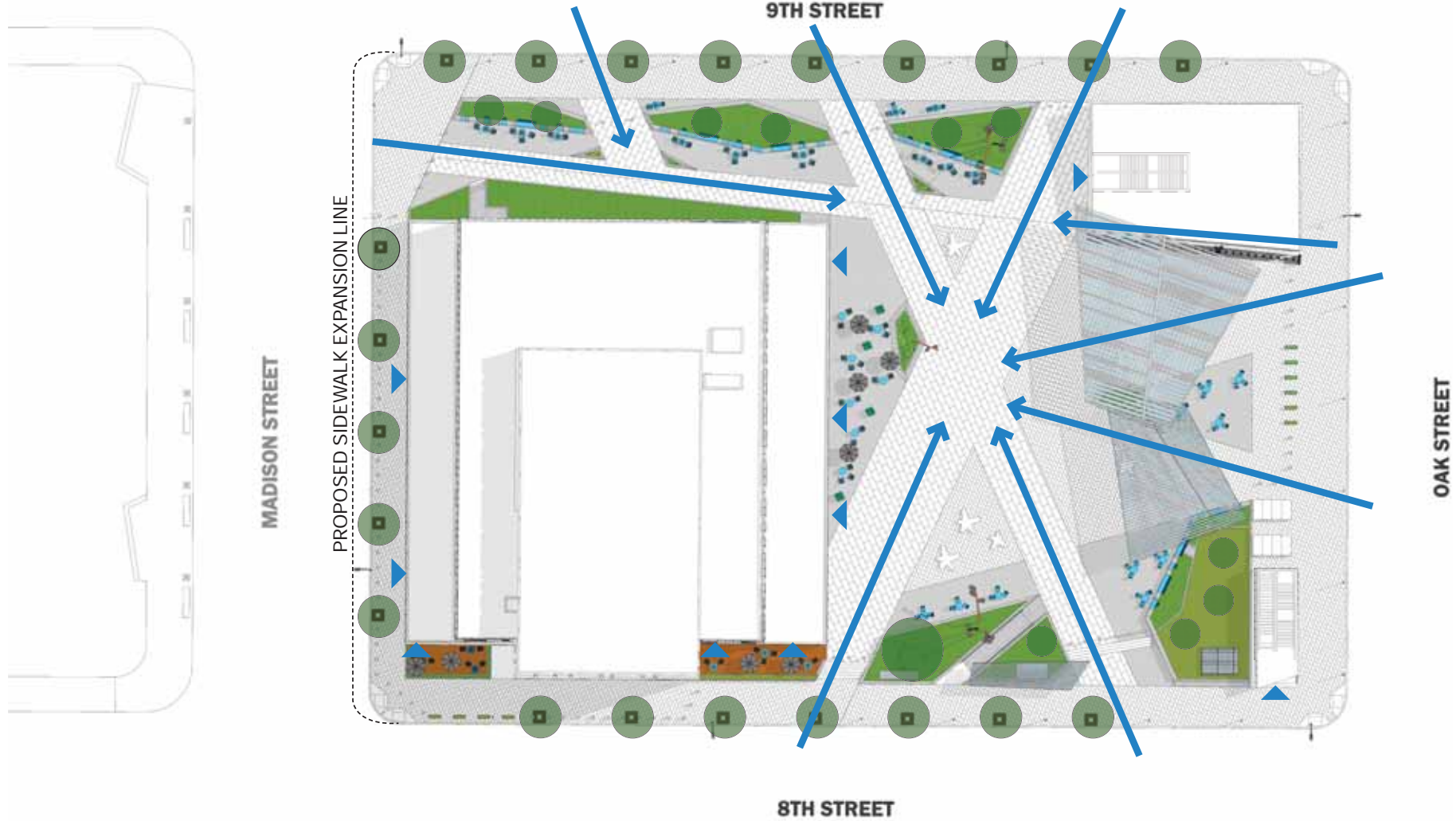
20 fixed bollards

▲ entry/exit



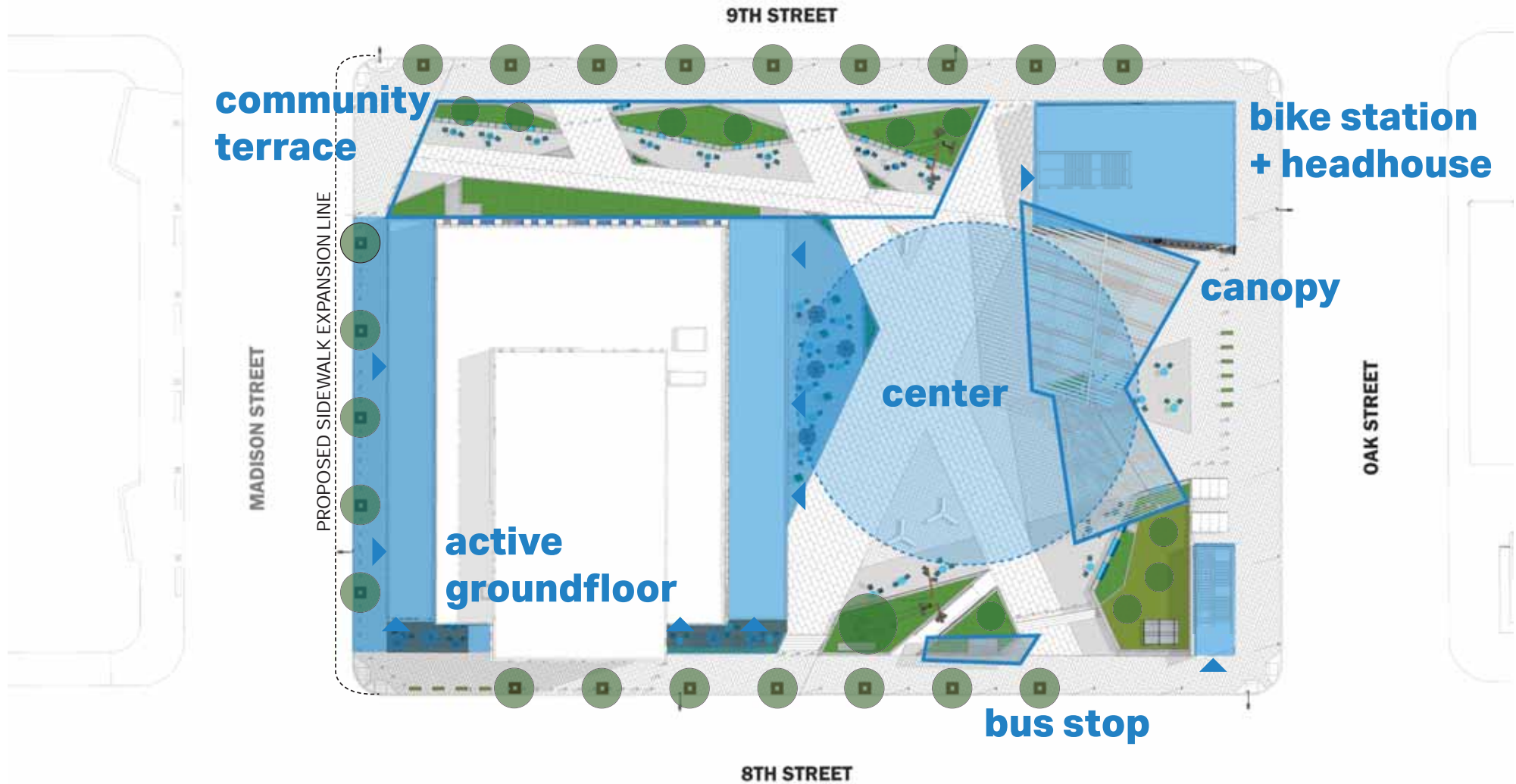
# place

adaptable community gathering place



# plaza

vibrant active zones





# plaza

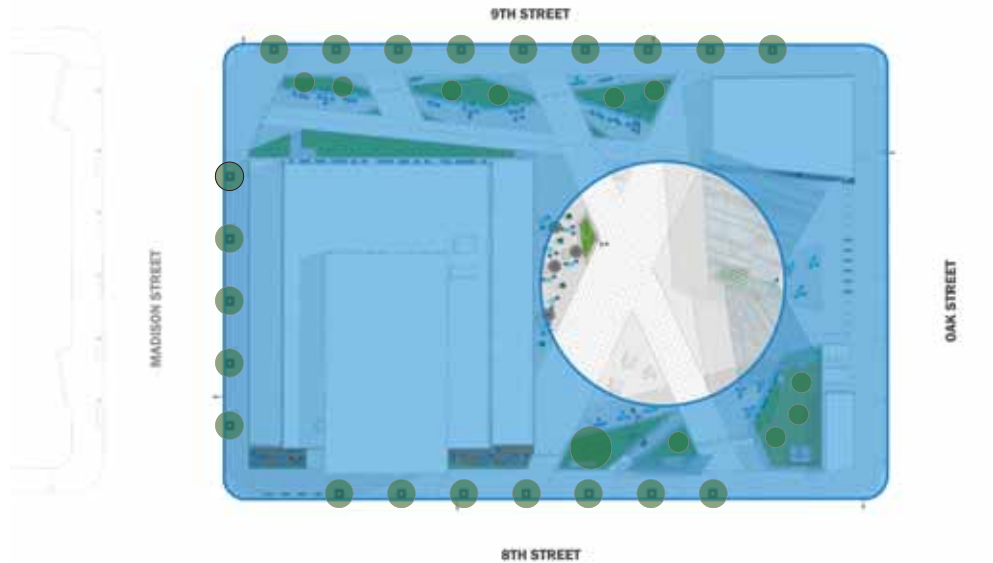


bird's eye view labeled with main zones of plaza



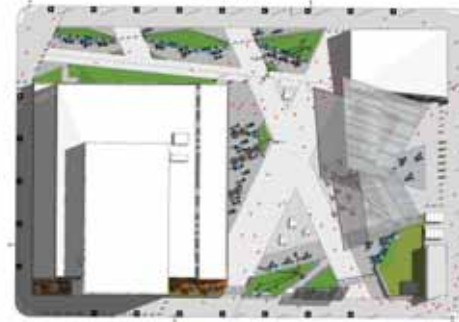
# center

flexible space for various events

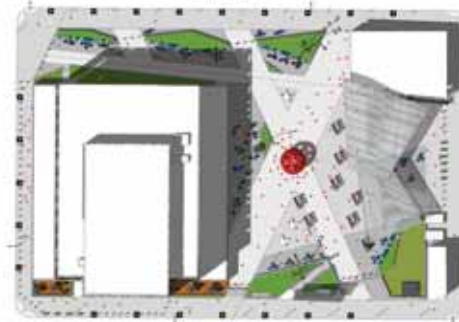


precedent images

informal activities

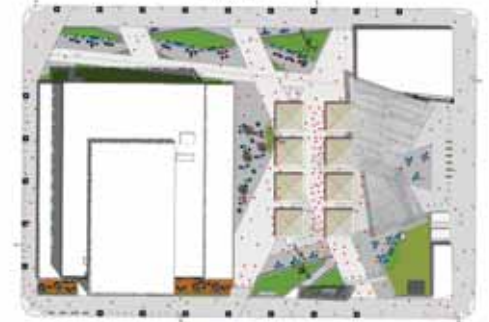


performance

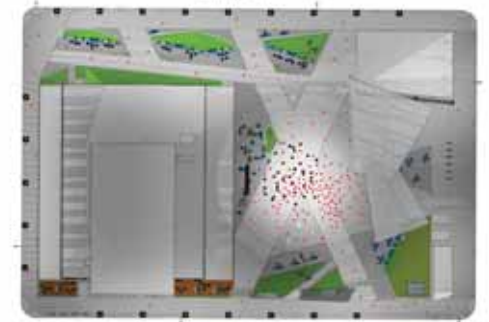


event test fits

festival



movie night



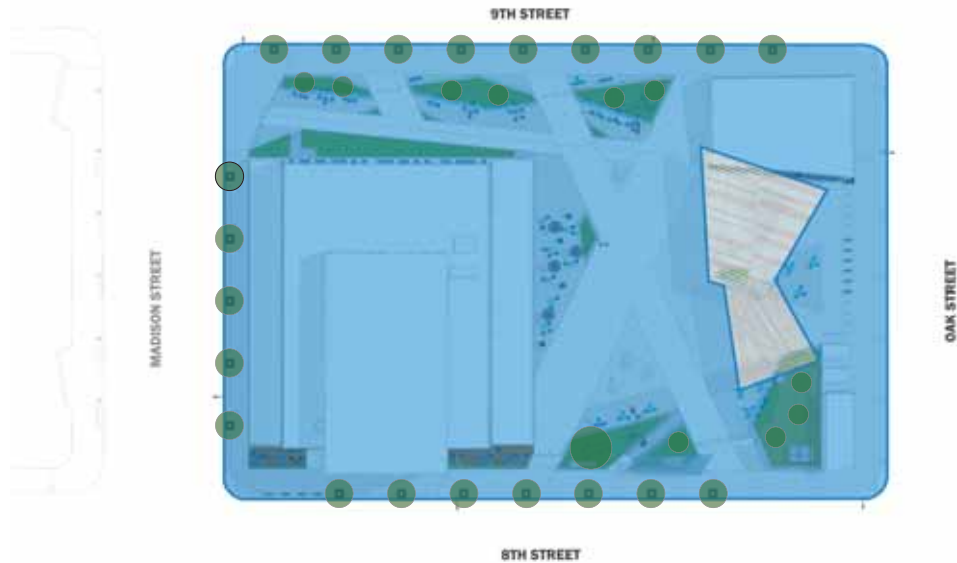
# center



view from 8th street showing active central plaza space

# canopy

canopy provides shade for group activities

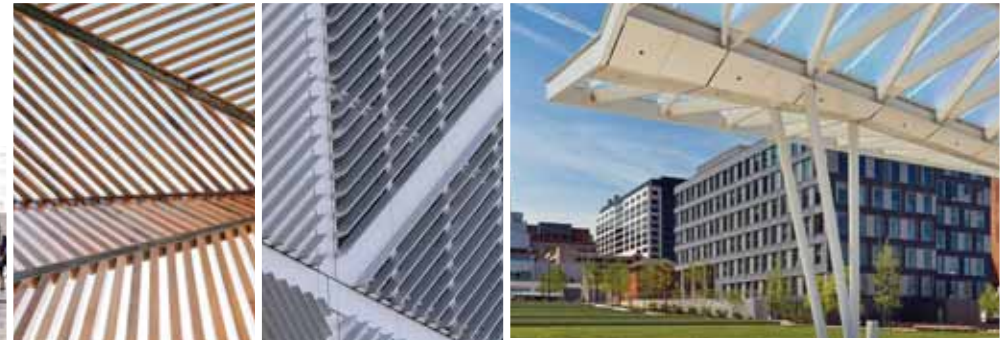


character images

kinetic



linear



canopy infill details (kinetic vs. linear)



# canopy



view from Oak street showing an informal group activity under the canopy

# bike station + headhouses

secure bike storage



precedent images



Berkeley bike station



# bike station + headhouses

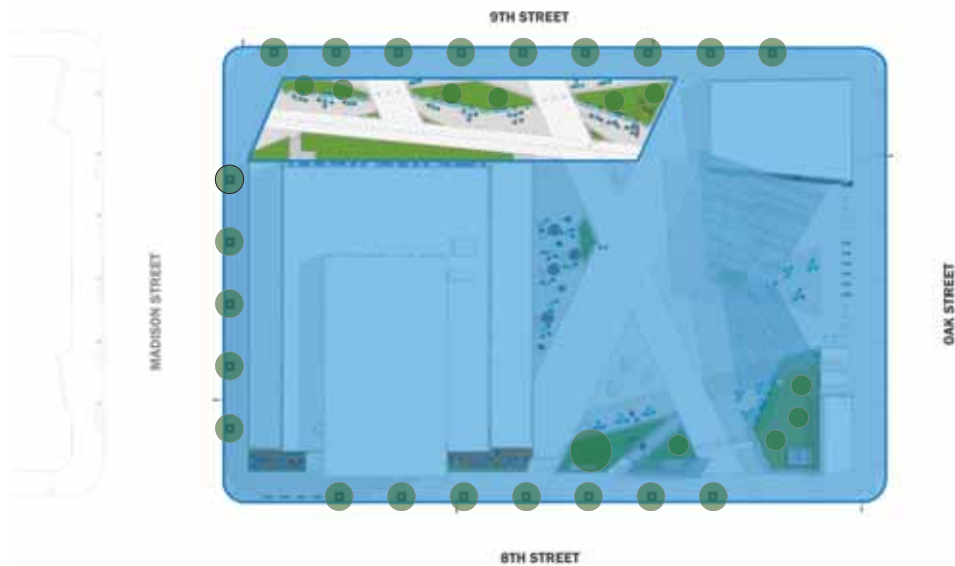


view from Oak street showing outside of bike station and headhouse to BART



# community terrace

quiet area with game tables, seating and lush planting



character images



furnishing + streetscape

# community terrace

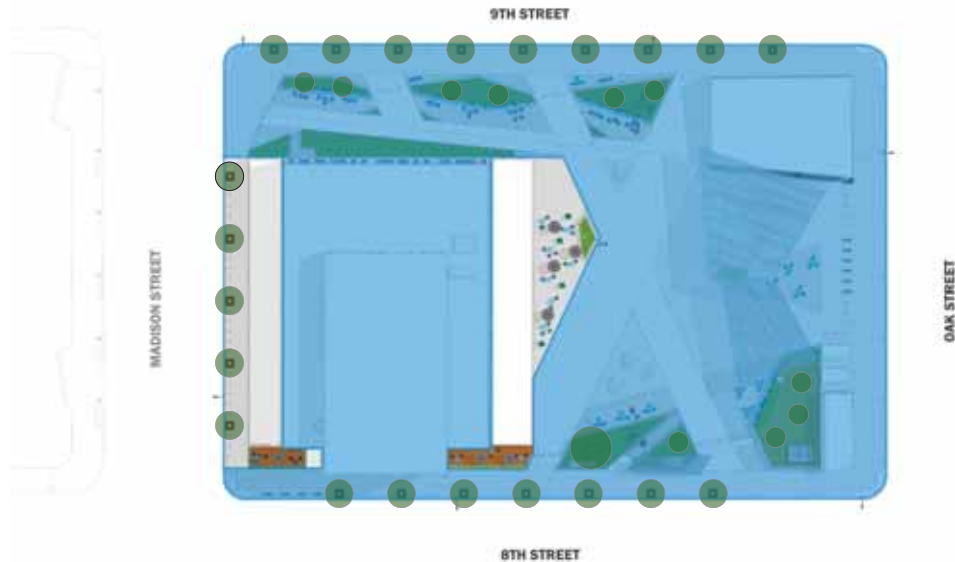


view from 9th street headhouse showing game tables, seating, and planters



# active ground floor

shopping, dining and learning experience



arts/cultural space



shops



cafes



coworking spaces



precedent images

character images

# active ground floor



view from 8th street looking north showing retail, café seating, and central plaza area



# bus stop



view of bus stop along 8th street showing shade

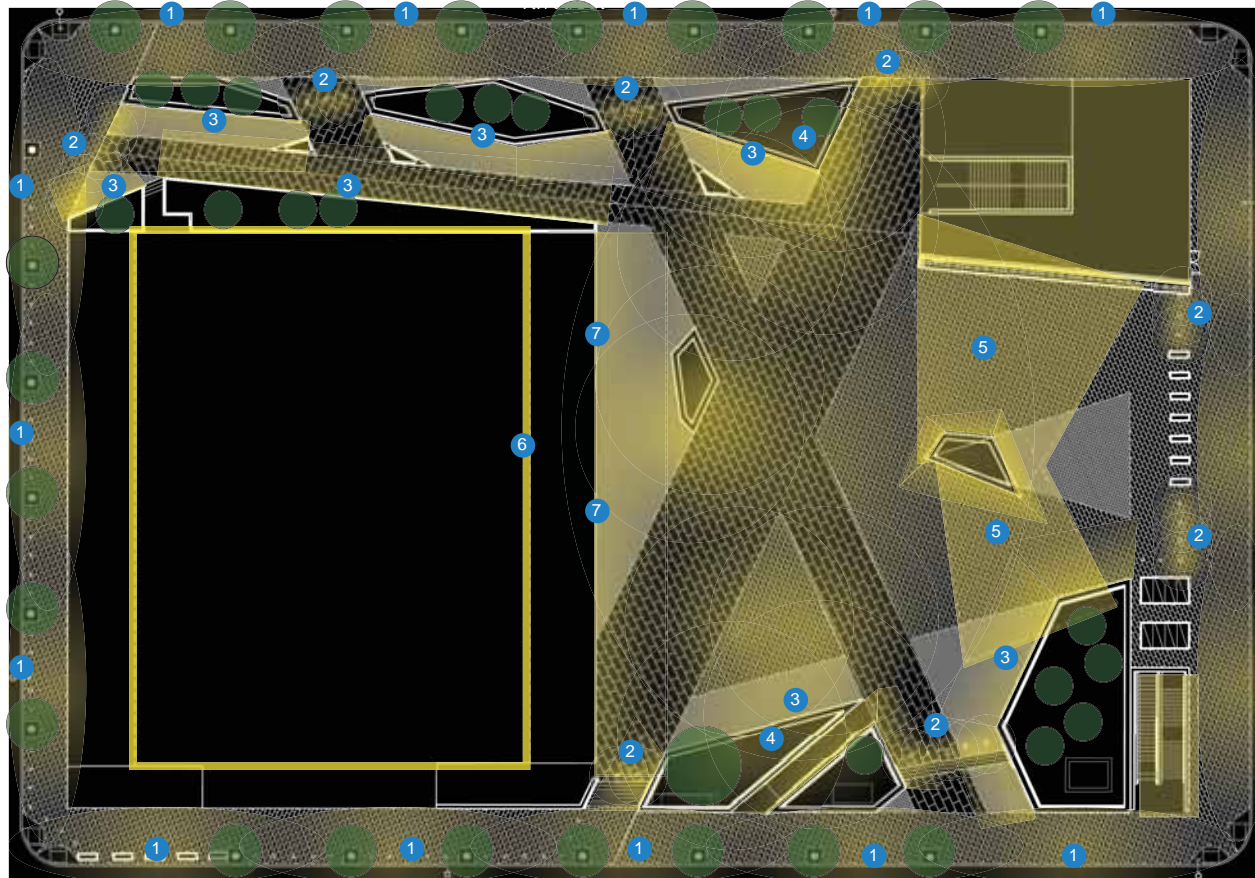
**\*potential for wayfinding to be integrated with vent structure**

# lighting

creating an inviting, safe, and flexible public space

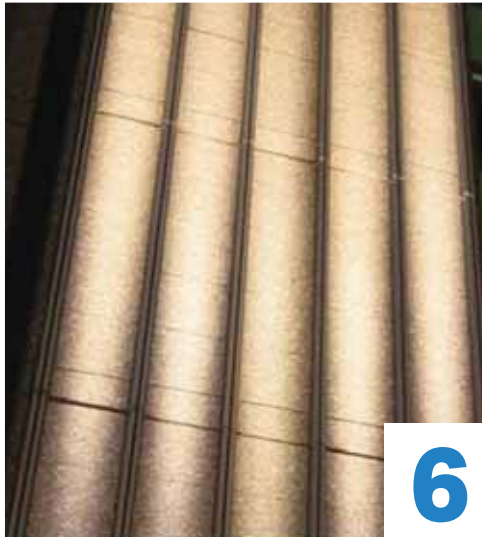
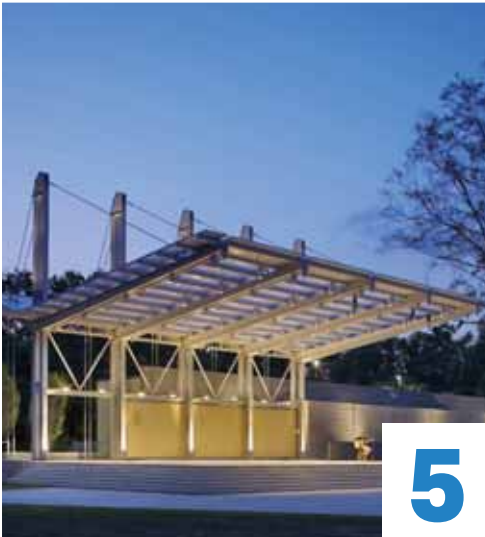
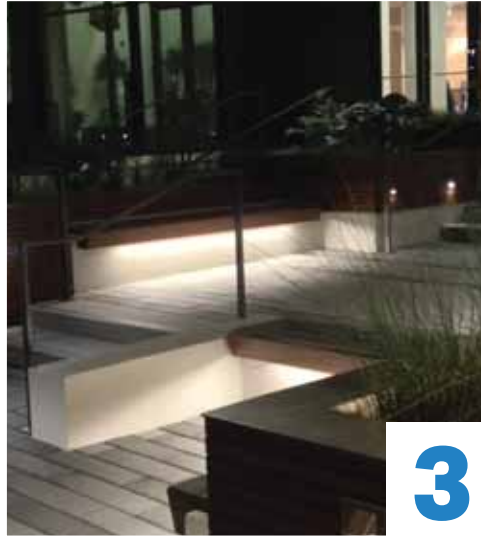
## legend

- 1 pedestrian perimeter lights
- 2 bollard lights
- 3 planter path lights
- 4 sculptural pole lights
- 5 canopy integrated lights
- 6 facade illumination
- 7 retail edge lights





# lighting



BART TOF and Lake Merritt Station Plaza








Working Group Meeting #4

11-08-2018

# sustainability

## trees, shrubs and groundcover

### legend

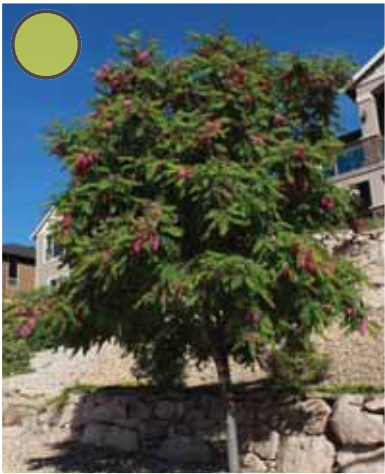
-  *Robinia* 'Purple Robe'  
Purple Robe Locust  
On Grade, In Bioretention
-  *Gleditsia triacanthos* var. *inermis* 'Shademaster'  
Shademaster Locust  
On Structure
-  *Cercis occidentalis*  
Western Redbud  
Small Accent Tree
-  *Arctostaphylos* 'Dr. Hurd'  
Dr. Hurd Manzanita  
Small Accent Tree
-  3 Options:  
dependent on availability at time  
of construction, see page 24  
Large Specimen Tree (On Structure)
-  Mixed Planting  
Bioretention Treatment Area
-  Mixed Planting  
Raised Planter





# sustainability

## trees + (some) planting



-  *Robinia* 'Purple Robe'  
Purple Robe Locust
-  *Gleditsia triacanthos* var. *inermis* 'Shademaster'  
Shademaster Locust
-  *Cercis occidentalis*  
Western Redbud
-  *Arctostaphylos* 'Dr. Hurd'  
Dr. Hurd Manzanita
-  Mixed Planting  
Bioretention Treatment Area
-  Mixed Planting  
Raised Planter





# sustainability



## large specimen tree



*Platanus racemosa*  
California Sycamore



*Ginkgo biloba* 'Autumn Gold'  
Maidenhair Tree



*Acer macrophyllum*  
Bigleaf Maple



- 
- \* CALIFORNIA NATIVE
  - \* ALAMEDA COUNTY CLEAN WATER PLANT LIST
  - \* SIMILAR TO BART APPROVED TREE: PLATANUS ACERFOLIA 'YARWOOD'

- \* DROUGHT TOLERANT
- \* ATTRACTS BUTTERFLIES
- \* ATTRACTS HUMMINGBIRDS

- 
- \* CALIFORNIA NATIVE
  - \* ALAMEDA COUNTY CLEAN WATER PLANT LIST

- \* DROUGHT TOLERANT

# community

accommodate a diverse community



BART TOF and Lake Merritt Station Plaza

Working Group Meeting #4

11-08-2018



# plan

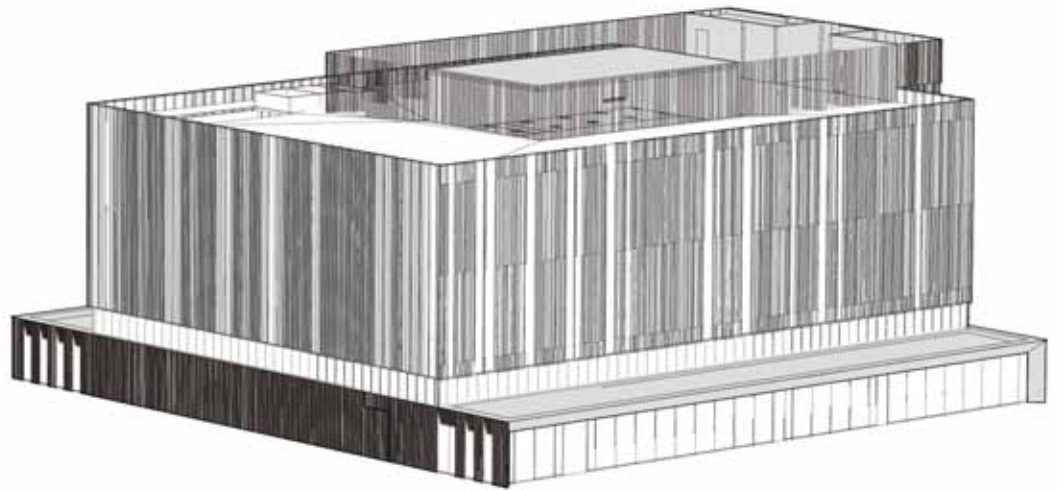




**architecture**

# building massing

- **An optimized plaza-level retail layout results in an increased 'activating perimeter'.**
- **A reconfigured TOF layout has allowed for a facade design with significant amounts of glazing, creating a welcoming and transparent enclosure.**



# facade strategy

## goals

- An architectural approach that relates to BART's mission, Oakland's civic context and the character of the local community.
- A 'floating', transparent box, glowing at night.
- Balancing 'eyes-on-the-plaza' with the need for a secure work environment.
- Warm and inviting.
- Provide daylight to workspaces, where appropriate.
- Integration of architecture with headhouse & canopy design.
- Responsive to Title 24 energy conservation requirements.
- Ease of maintenance & durability.





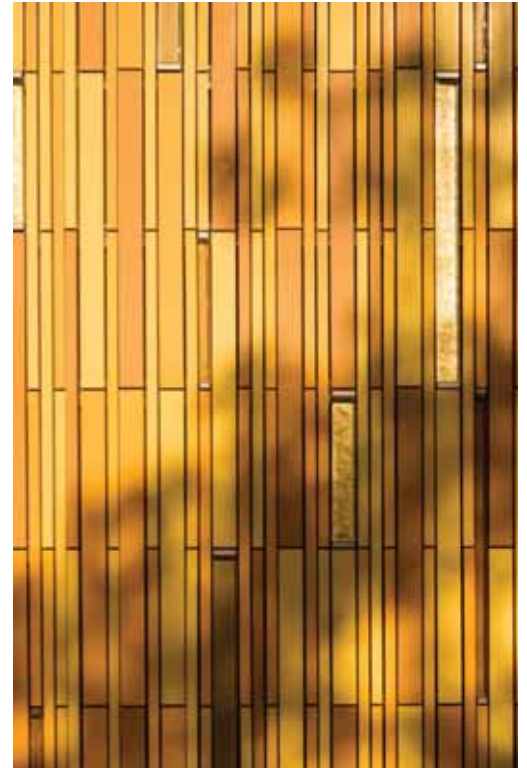
# material palette

traditional and local reference: terracotta



# **material palette**

## **contemporary glazed terracotta**



# building facade

daylight, transparency, 'eyes on the plaza'





# building facade

Madison Park approach



# building facade

view from 8th St



# building facade

## view from plaza

