

# LAKE MERRITT BART STATION

Transit Operations Facility & Plaza Design

Working Group #2



merge  
conceptual design

rh<sup>aa</sup>  
LANDSCAPE ARCHITECTURE + PLANNING

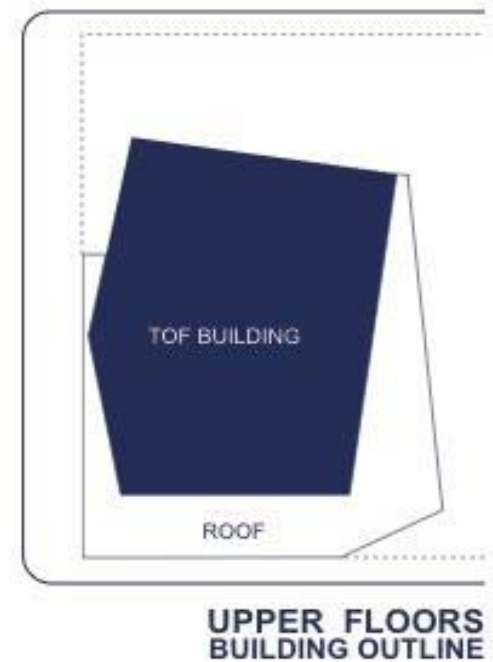
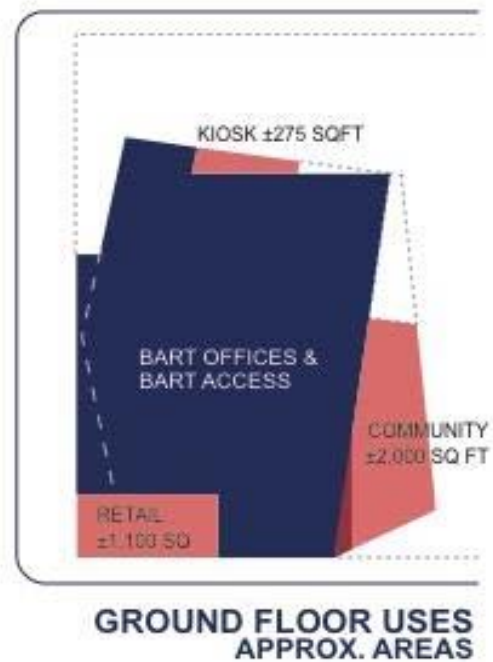
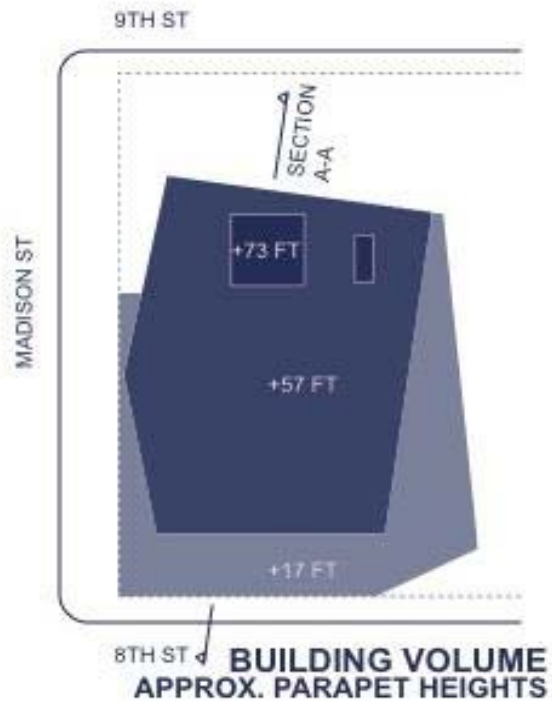
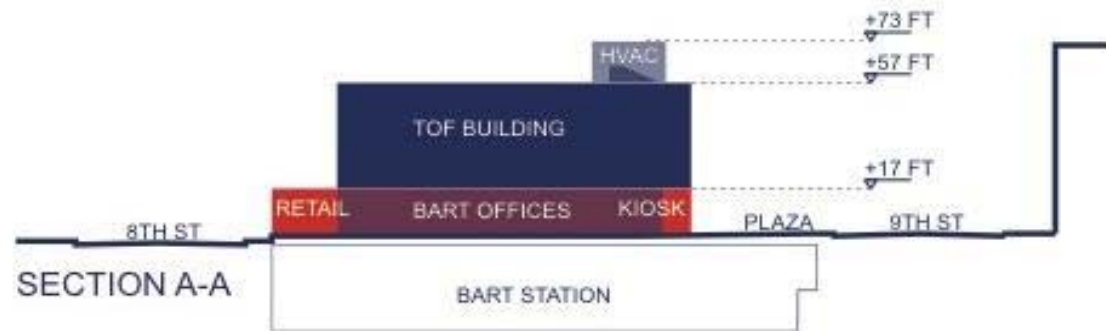
# SUMMARY OF KEY FEEDBACK

- Create / Enhance visual corridors into plaza, and from plaza to surrounding context/features
- Create / Enhance physical access to the plaza
- Connect all 3 blocks / Laney to Chinatown – visual and physical connections
- Catalyze / Activate the public realm
- Create open space for large group activities and community use
- Include gatherings spaces for users of all ages
- Including benches for sitting and playing games
- Develop consistent streetscape design and wayfinding
- Provide shade / Protection from sun and rain
- Implement crosswalks improvements
- Design Building as activating asset in plaza

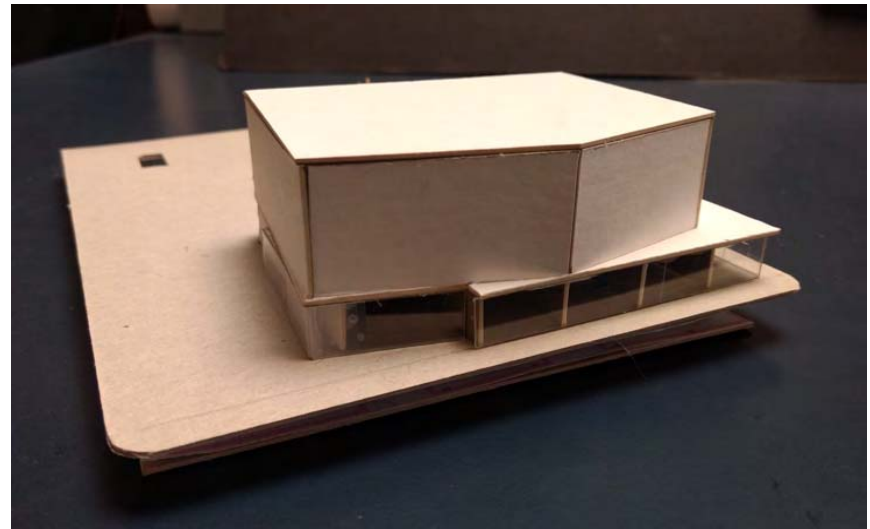
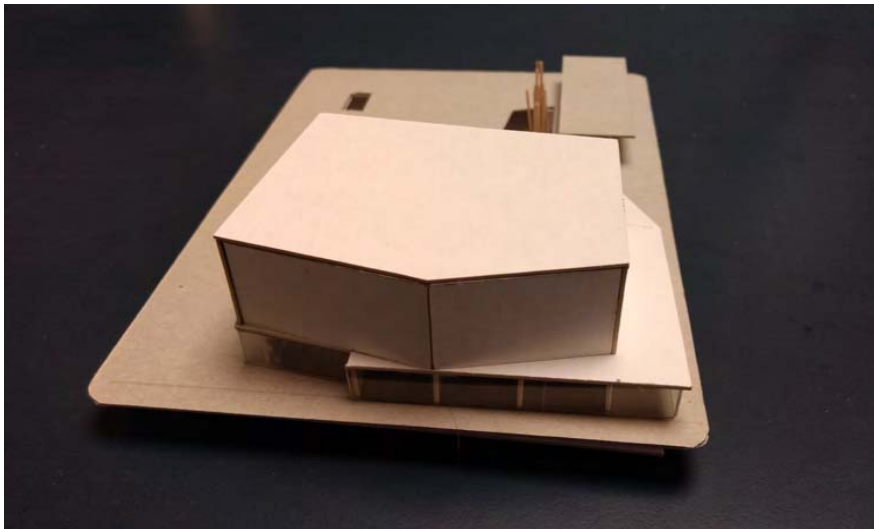
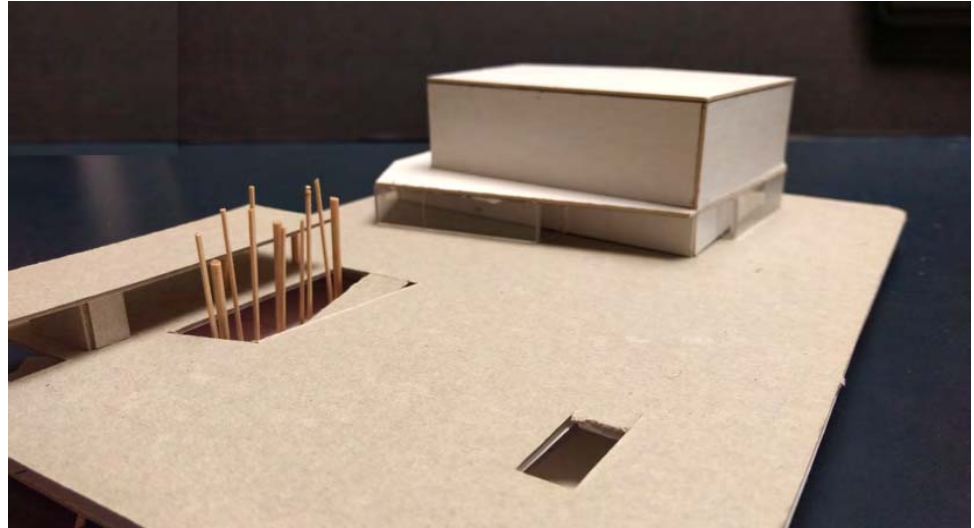
# GOALS

- **Catalyze & Activate**
- **Connect & Integrate**
- **Safe & Welcoming**

# BUILDING MASSING



# BUILDING MODEL





# CONCEPT 1 SURFACE



# CONCEPT 1 MODEL VIEWS





# CONCEPT 1 MODEL VIEWS

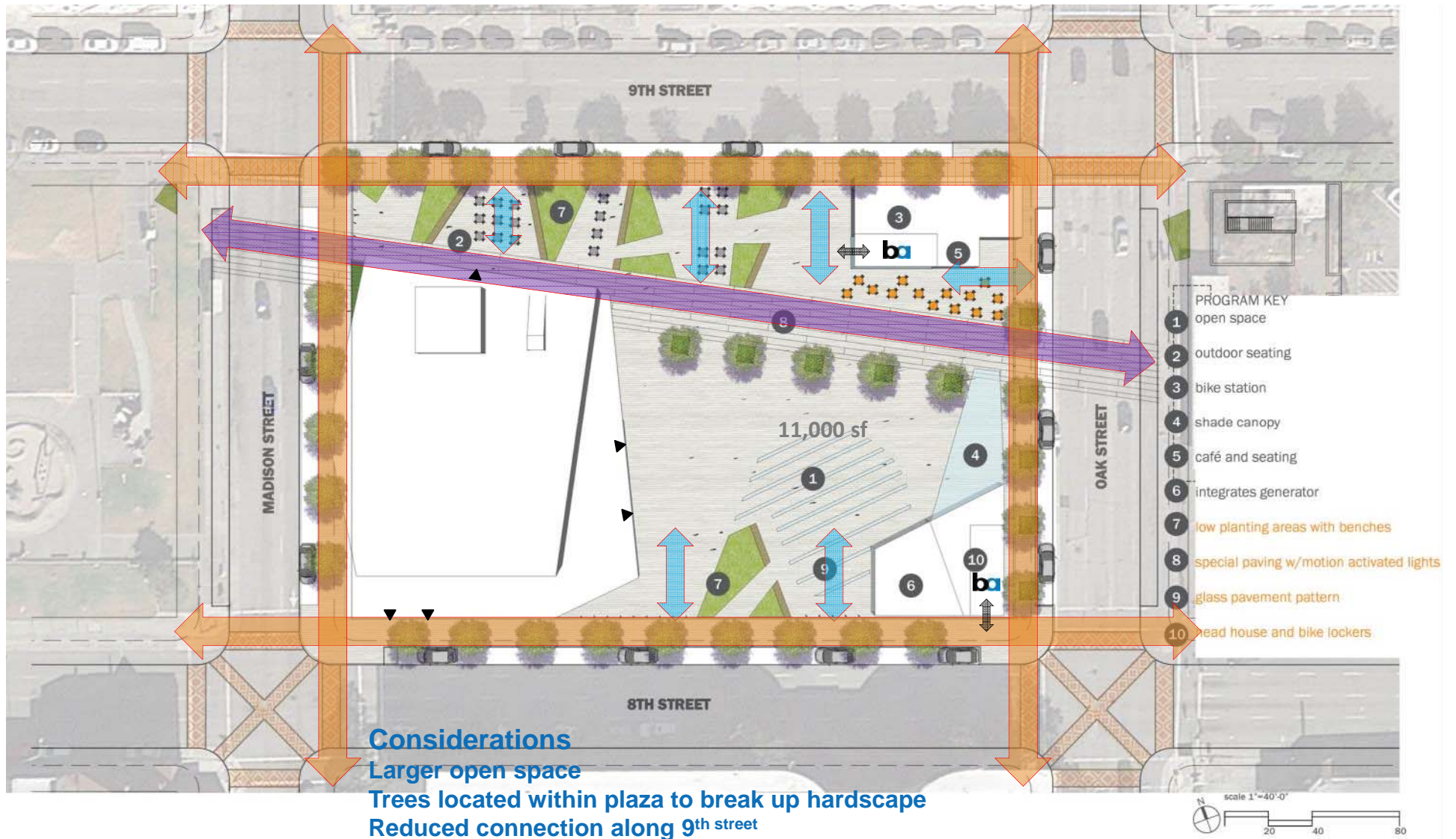




# CONCEPT 1 MODEL VIEWS



# CONCEPT 1 CIRCULATION





# CONCEPT 1 IMAGES





# CONCEPT 2 ROOMS





# CONCEPT 2 MODEL VIEWS



# CONCEPT 2 MODEL VIEWS

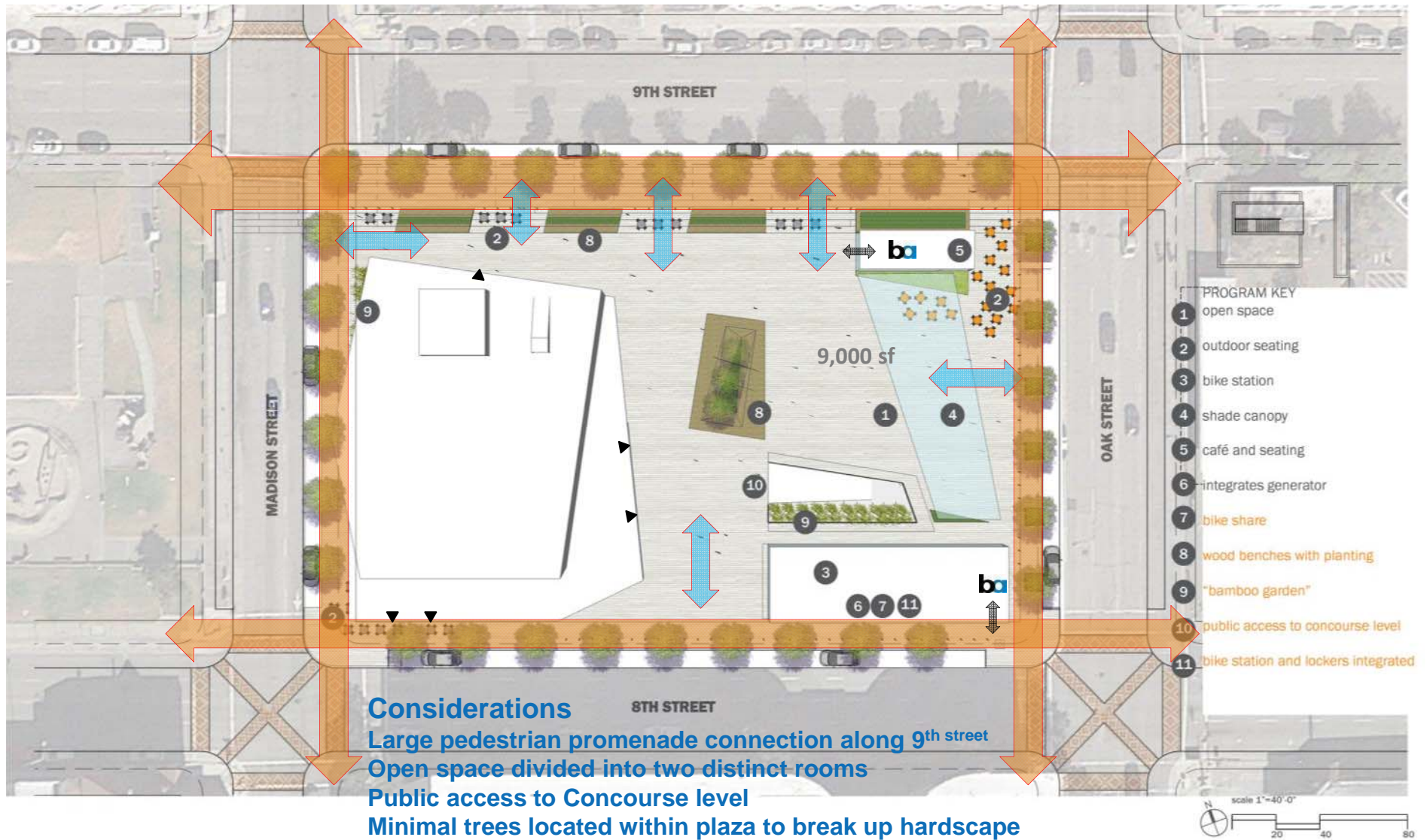




# CONCEPT 2 MODEL VIEWS



# CONCEPT 2 CIRCULATION





# CONCEPT 2 IMAGES





# CONCEPT 3 FOLDS



# CONCEPT 3 MODEL VIEWS





# CONCEPT 3 MODEL VIEWS

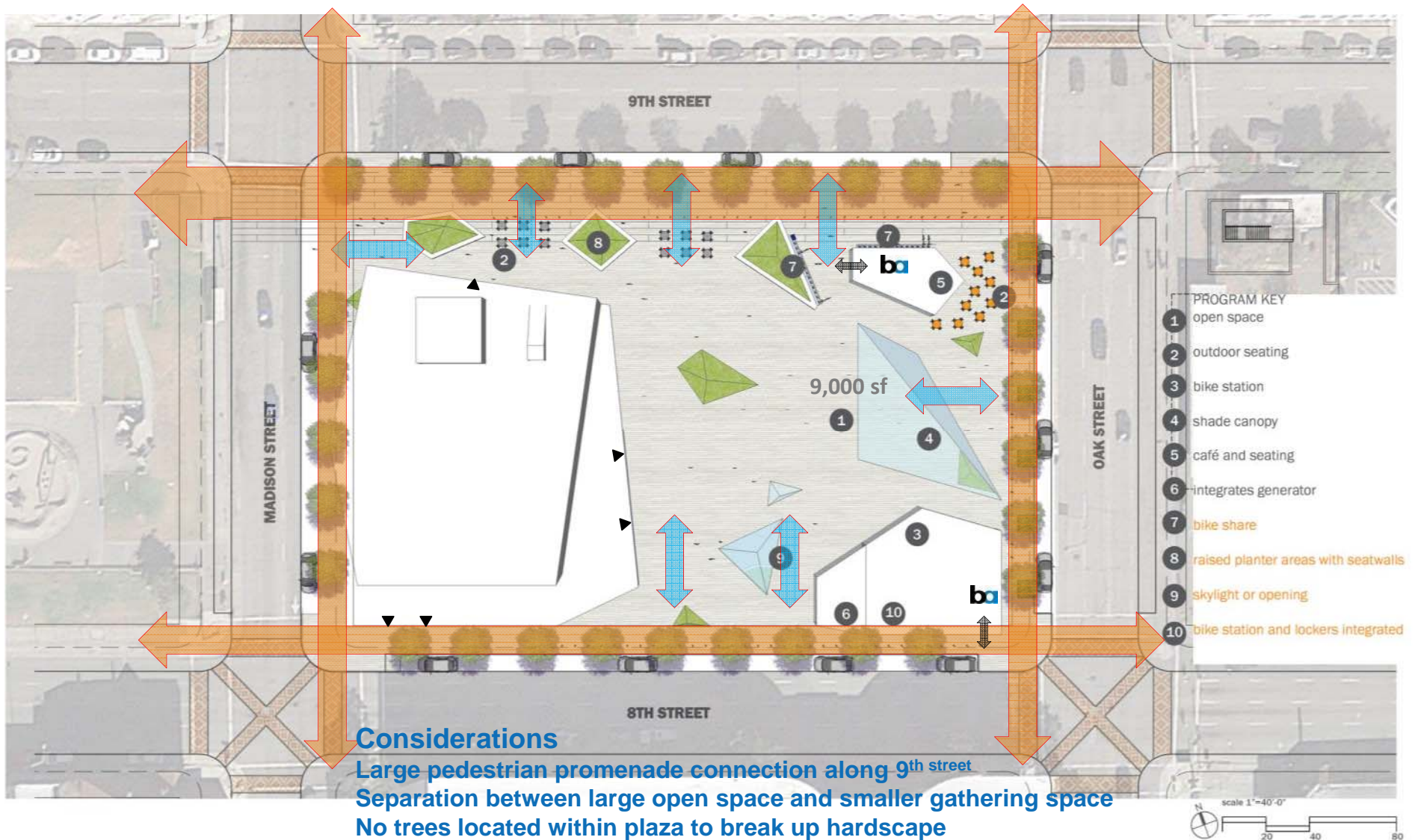




# CONCEPT 3 MODEL VIEWS



# CONCEPT 3 CIRCULATION



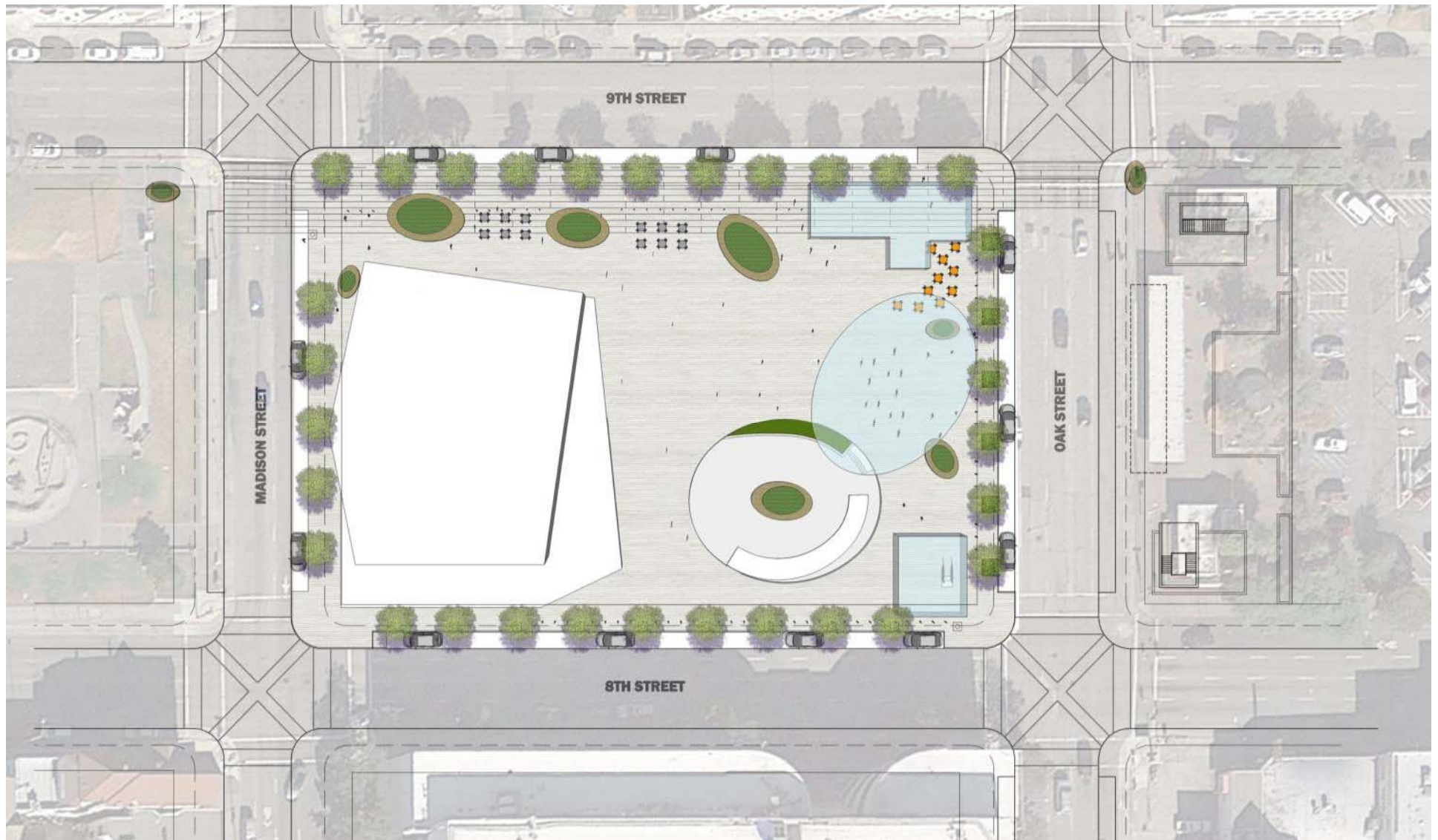


# CONCEPT 3 IMAGES





# CONCEPT STUDY – OPEN ROOF





# LOCAL EXPRESSIONS





# POTENTIAL INSPIRATIONS





# COMMUNITY OPEN HOUSE

- Feedback on Plaza Elements/Alternatives
  - Today – narrow options for more streamlined alternatives
  - What other input should we seek?
- Open House with Stations
- Translation/Interpretation
  - Chinese (Cantonese & Mandarin)
  - Vietnamese
  - Spanish
- Tentative Date: Wednesday May 10, 3-7pm
- Location: MetroCenter

**End of Slideshow**