

SAN FRANCISCO BAY AREA RAPID TRANSIT DISTRICT
300 Lakeside Drive, P. O. Box 12688, Oakland, CA 94604-2688

NOTICE OF SPECIAL MEETING AND AGENDA
BOARD OF DIRECTORS

November 22, 2011
9:00 a.m.

President Franklin has called a Special Meeting of the Board of Directors on Tuesday, November 22, 2011, at 9:00 a.m. The Special Meeting will be held in the Board Room, Kaiser Center 20th Street Mall – Third Floor, 344 20th Street, Oakland, California.

The purpose of the Special Board Meeting is to consider and take such action as the Board may desire in connection with:

1. Roll Call and Pledge of Allegiance.
2. Public Comment on Item 3 Only.
3. Redistricting of Election Districts: Proposed Redistricting Plans.* For information.

Kenneth A. Duron
District Secretary

Please refrain from wearing scented products (perfume, cologne, after-shave, etc.) to this meeting, as there may be people in attendance susceptible to environmental illnesses.

BART provides services/accommodations upon request to persons with disabilities and individuals who are limited English proficient who wish to address BART Board matters. A request must be made within one and five days in advance of a Board meeting, depending on the service requested. Please contact the District Secretary's Office at (510) 464-6083 for information.

November 15, 2011

SAN FRANCISCO BAY AREA RAPID TRANSIT DISTRICT

MEMORANDUM

TO: Board of Directors **DATE:** November 15, 2011
FROM: District Secretary
SUBJECT: Redistricting of Election Districts: Proposed Redistricting Plans

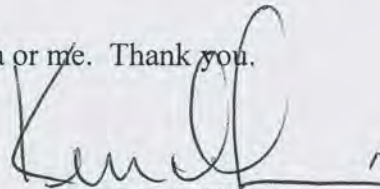
In accordance with the requirements of the District Act and based upon the population data resulting from the 2010 United States Census, the Board of Directors started the process to redistrict the election districts of the District with the ratification of the appointment of the Redistricting Ad Hoc Committee. A consultant, Sandi Polka Consulting, was engaged to assist in adjusting of the District's election district boundaries.

In addition to items on the agenda at public meetings of the Board of Directors and on the District website, ten public meetings were conducted throughout the District as described in Ms. Polka's memorandum (attached) affording the opportunity for members of the public in each election district to provide input.

The consultant developed maps and tables depicting the current election districts for presentation and to the Board and the public. Comments were received at the public meetings, through email, and in interviews with Directors. The consultant has developed two alternative maps for consideration by the Board of Directors and the public.

The enclosed material describing the proposed redistricting plans will be available for public review on the District's website and through the Office of the District Secretary. The current schedule includes presenting the final proposed election districts to the Board of Directors at the December 1 Regular Board Meeting.

Should you have any questions please contact Ms. Polka or me. Thank you.


Kenneth A. Duron

Attachments

cc: Board Appointed Officers
Deputy General Manager

November 15, 2011

To: BART Board of Directors

Fr: Sandi Polka/Polka Consulting and David Ely/Compass Demographics

Re: Summary of 2011 Redistricting Process

2011 Redistricting of BART Election Districts

The 2011 process of redistricting BART election districts has been guided by traditional redistricting principles and options for new districts have been developed with particular attention to the unique character of the San Francisco Bay Area. There has been an extensive effort to encourage public participation and particular care has been taken to maintain communities of interest.

Community Meetings

The Board of Directors conducted ten informational community meetings to provide an opportunity for public input on the redrawing of the nine BART election districts. There were ten meetings between October 3 and October 13, 2011. The meetings were held in Richmond, Pittsburg, Oakland, Fremont, San Leandro, Lafayette, Livermore, and in San Francisco in the Mission, Chinatown and Bayview neighborhoods.

At each meeting there were presentations on the Redistricting process and the population deviation from the ideal of the current districts. Participants were briefed on traditional redistricting criteria and asked about their communities of interest. They were given local district maps and the population of communities and neighborhoods. These materials are available on the District website.

Outreach

In order to maximize community involvement in the redistricting process, BART staff conducted extensive outreach prior to the community meetings. To accommodate a wide range of participants, the meetings were held at various times of the day, both in the evening and during the lunch hour, and at a variety of locations. At least one meeting was held in each of the nine election districts.

The outreach effort included a multilingual notice in English, Spanish, Chinese, Korean and Vietnamese which was sent to Bay Area wide media, city and county elected officials, BART's database of Community Based Organizations and BART email distribution lists. There were also station notifications through BART Times newsletter and the Destination Sign System. BART's Community Relations staff visited community leaders to invite them to the meetings and engaged CBOs in choosing the locations for our meetings and in publicizing the meetings to their constituents.

Documentation of outreach efforts is available from the Office of the District Secretary. The meeting handouts are available on the BART website for download. An audio recording of each meeting is also available from the Office of the District Secretary. Translation services were available at each meeting.

Meetings with Directors

As directed, we met with each Director individually to get your input on drawing your new district. We found your input on the communities of your districts very helpful in developing options.

Proposed Redistricting Plans

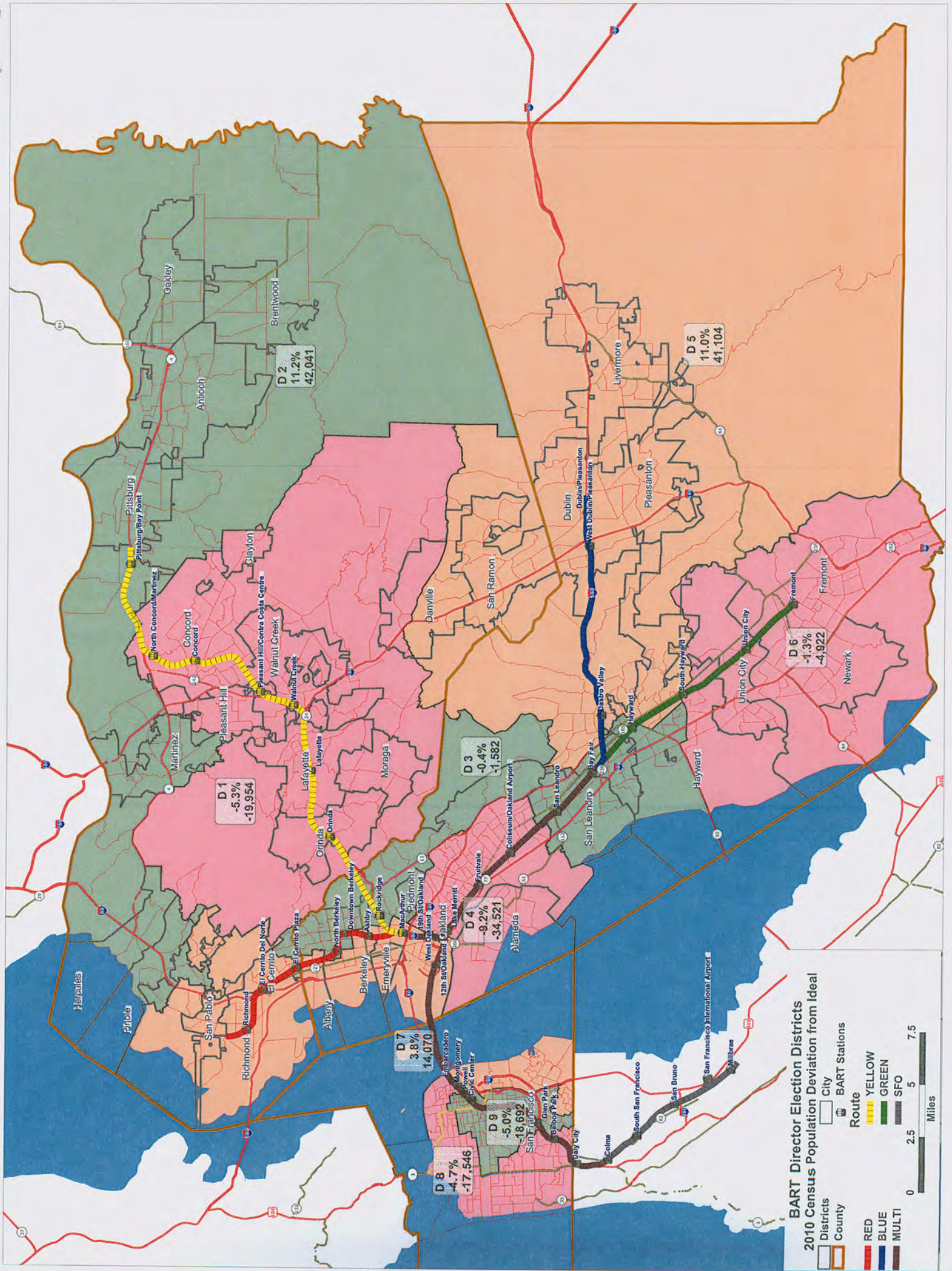
After public input and in consultation with the Board of Directions we developed two options which we will present to you at your November 22, 2011 hearing.

In this packet you will find maps and data for each of the two options:

Option A makes significant changes. This plan removes District 5 from Contra Costa County and rotates the balance of the districts to make them more compact.

Option B is a minimal change plan which equalizes population with local adjustments.

We look forward to the November 22 discussion.

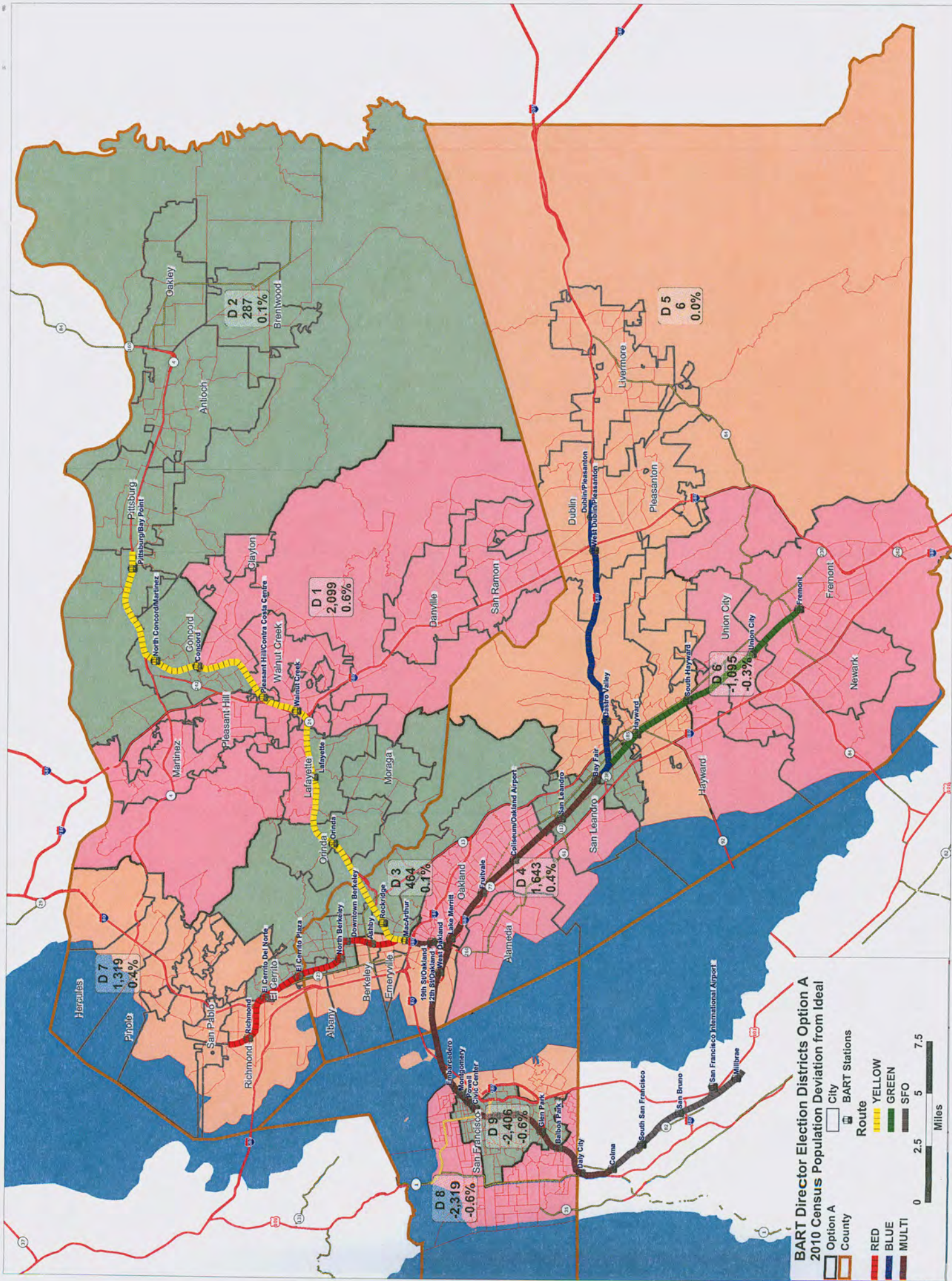


2010 Census Population by District and City

DISTRICT	NAME	POP	Share	City Pop
1	Clayton	10897	100.0%	10897
1	Concord	122062	100.0%	122067
1	Danville	13306	31.7%	42039
1	Lafayette	23893	100.0%	23893
1	Moraga	16016	100.0%	16016
1	Orinda	17643	100.0%	17643
1	Pleasant Hill	31215	94.2%	33152
1	Walnut Creek	64173	100.0%	64173
1	Uninc. Contra Costa	54678	34.2%	159785
2	Antioch	102372	100.0%	102372
2	Brentwood	51481	100.0%	51481
2	Concord	5	0.0%	122067
2	Hercules	24060	100.0%	24060
2	Martinez	35824	100.0%	35824
2	Oakley	35432	100.0%	35432
2	Pinole	18390	100.0%	18390
2	Pittsburg	63264	100.0%	63264
2	Pleasant Hill	1937	5.8%	33152
2	Uninc. Contra Costa	83113	52.0%	159785
3	Berkeley	79086	70.2%	112580
3	Hayward	63836	44.3%	144186
3	Oakland	63124	16.2%	390724
3	Piedmont	10667	100.0%	10667
3	San Leandro	84950	100.0%	84950
3	Uninc. Alameda	65515	46.4%	141266
3	Uninc. Contra Costa	5077	3.2%	159785
4	Alameda	73812	100.0%	73812
4	Oakland	265504	68.0%	390724
5	Dublin	46036	100.0%	46036
5	Hayward	37662	26.1%	144186
5	Livermore	80968	100.0%	80968
5	Pleasanton	70285	100.0%	70285
5	Uninc. Alameda	75702	53.6%	141266
5	Danville	28733	68.3%	42039
5	San Ramon	72148	100.0%	72148
5	Uninc. Contra Costa	3407	2.1%	159785

2010 Census Population by District and City

DISTRICT	NAME	POP	Share	City Pop
6	Fremont	214089	100.0%	214089
6	Hayward	42688	29.6%	144186
6	Newark	42573	100.0%	42573
6	Union City	69516	100.0%	69516
6		49	0.0%	141266
7	Albany	18539	100.0%	18539
7	Berkeley	33494	29.8%	112580
7	Emeryville	10080	100.0%	10080
7	Oakland	62096	15.9%	390724
7	El Cerrito	23549	100.0%	23549
7	Richmond	103701	100.0%	103701
7	San Pablo	29139	100.0%	29139
7	Uninc. Contra Costa	13510	8.5%	159785
7	San Francisco	93799	11.6%	805235
8	San Francisco	356291	44.2%	805235
9	San Francisco	355145	44.1%	805235



Option A

- City
- County

Route

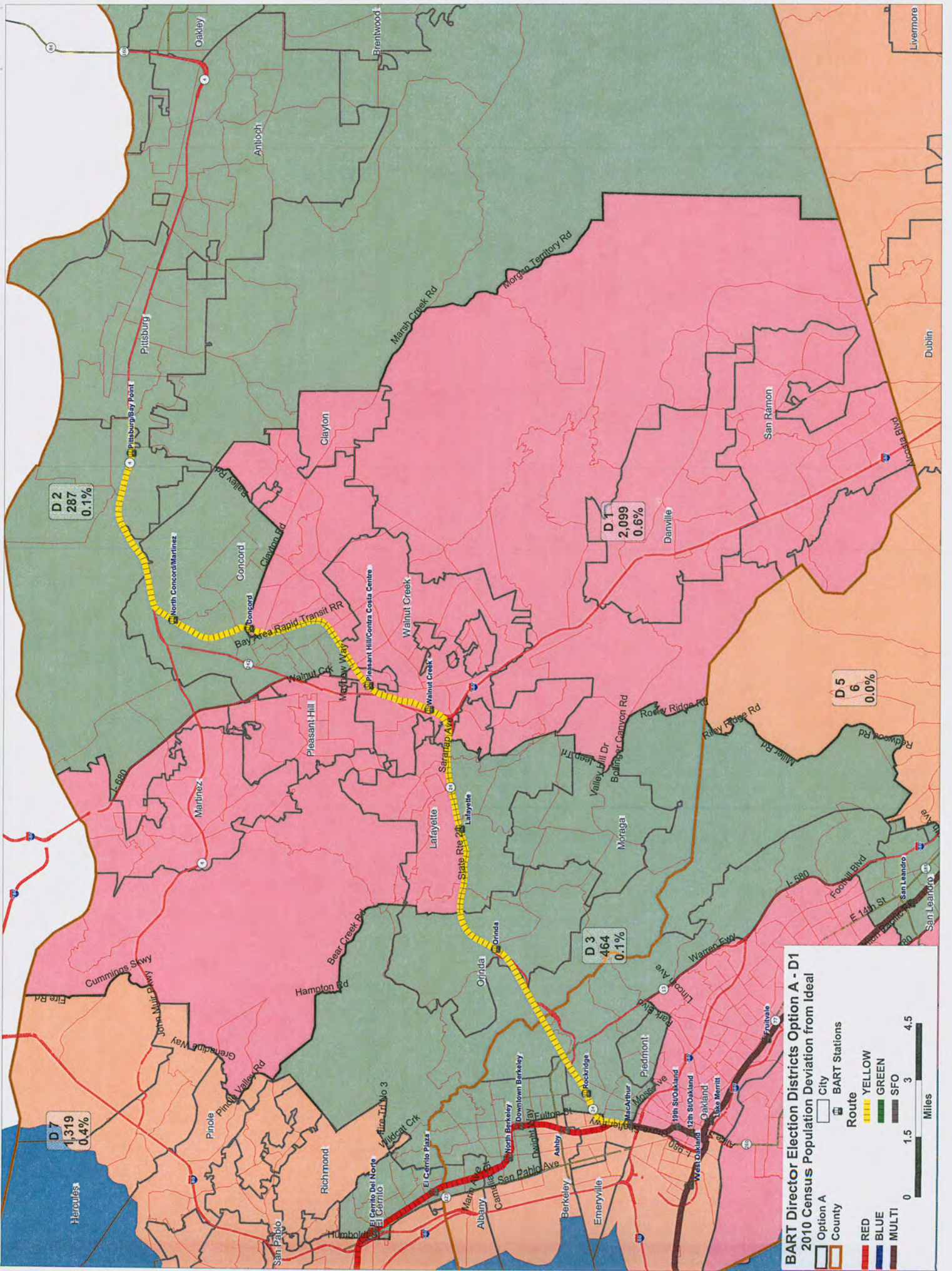
- RED
- BLUE
- MULTI
- YELLOW
- GREEN
- SFO

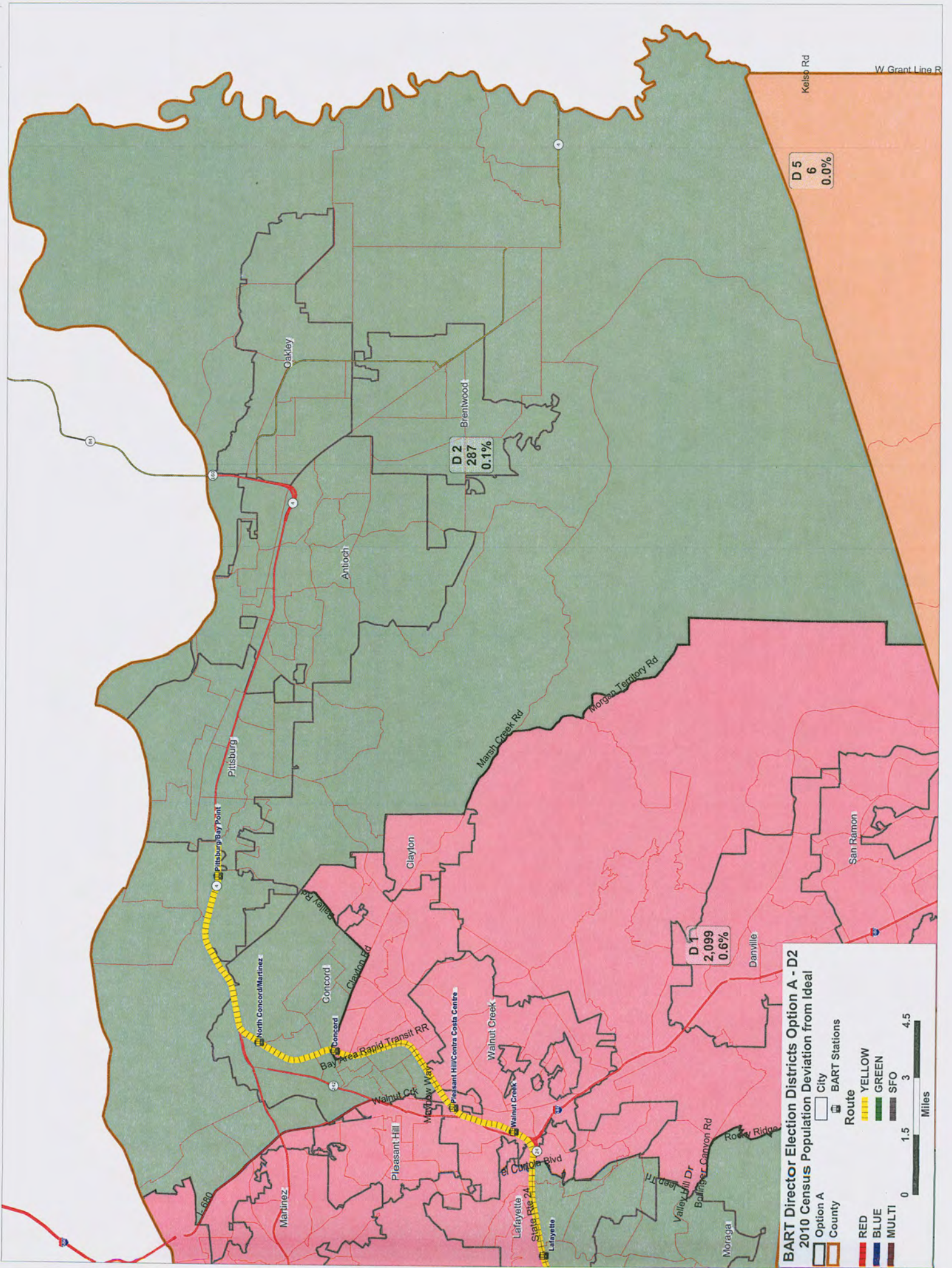
BART Stations

- San Francisco International Airport
- San Bruno
- San Francisco
- Colma
- San Bruno
- San Francisco
- San Bruno
- San Francisco International Airport

Miles

0 2.5 5 7.5



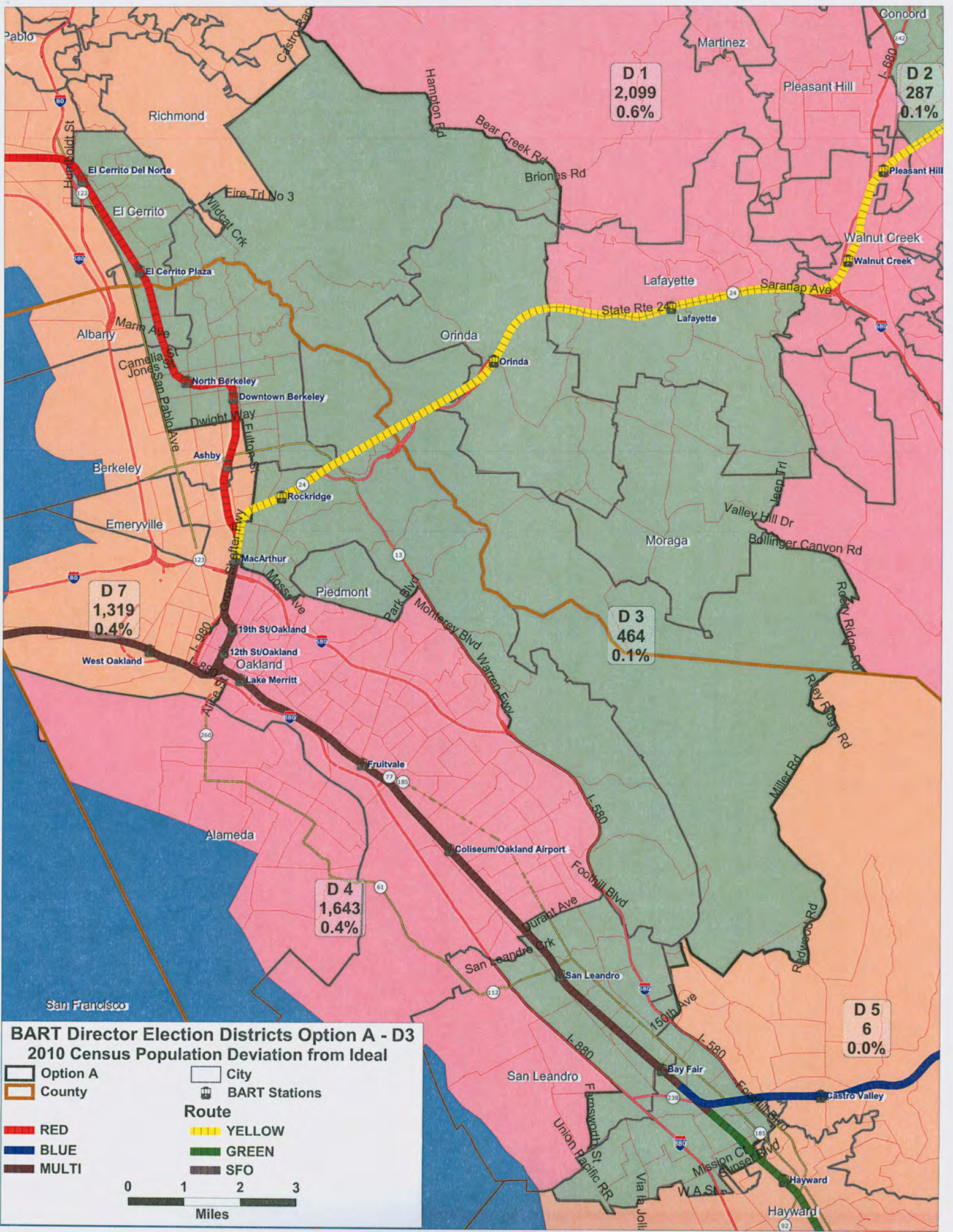


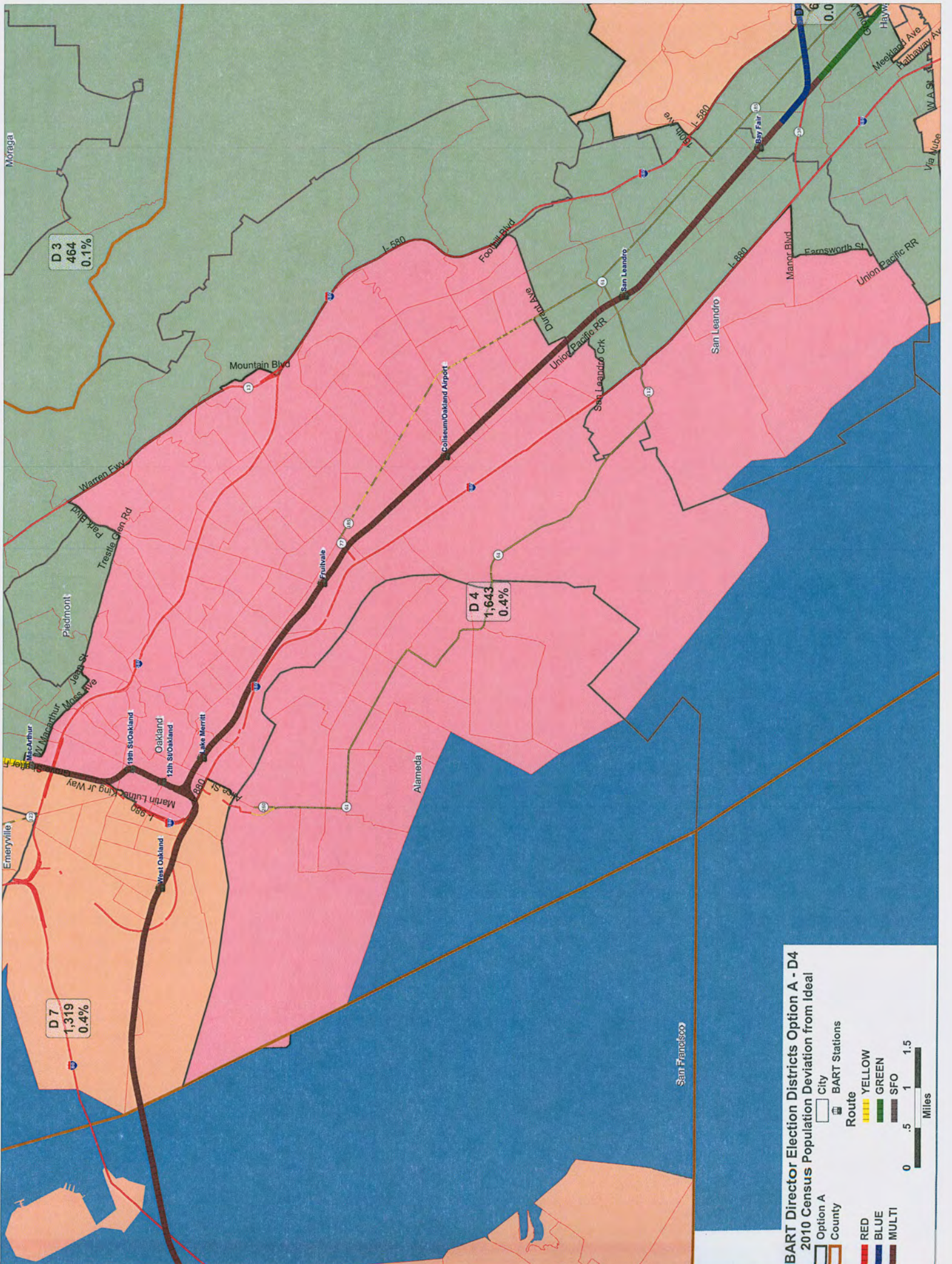
Legend

- Option A
- County
- City
- BART Stations
- Route**
- YELLOW
- GREEN
- SFO
- MULTI

Scale

0 1.5 3 4.5 Miles

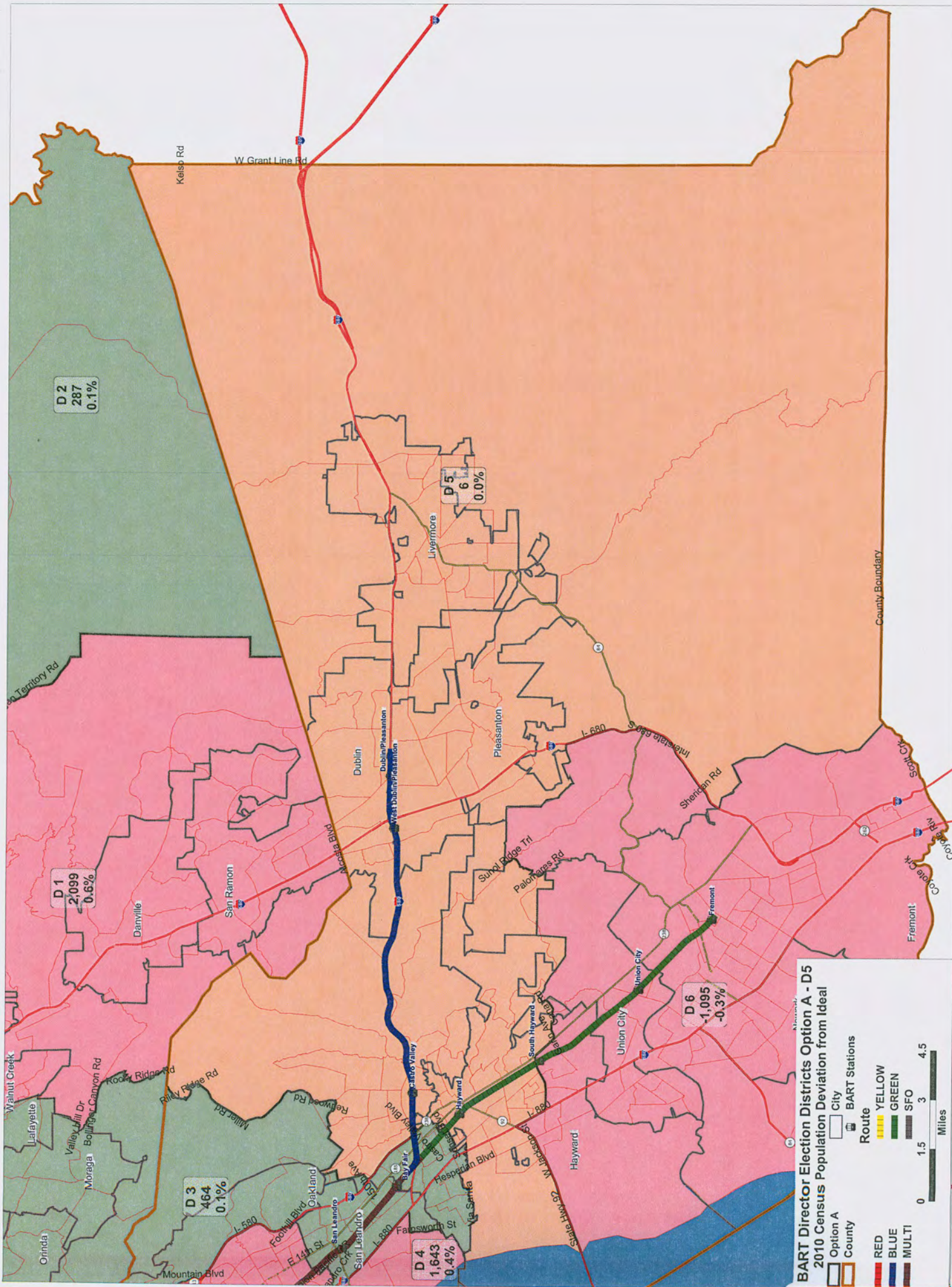




BART Director Election Districts Option A - D4
 2010 Census Population Deviation from Ideal

	Option A		City		BART Stations
	County				
	RED		YELLOW		GREEN
	BLUE		SFO		
	MULTI				

0 0.5 1 1.5 Miles



BART Director Election Districts Option A - D5
 2010 Census Population Deviation from Ideal

Option A
 County

Route
 SFO SFO SFO

BART Stations

Legend:
 RED
 BLUE
 MULTI

Scale:
 0 1.5 3 4.5 Miles

D 2
 287
 0.1%

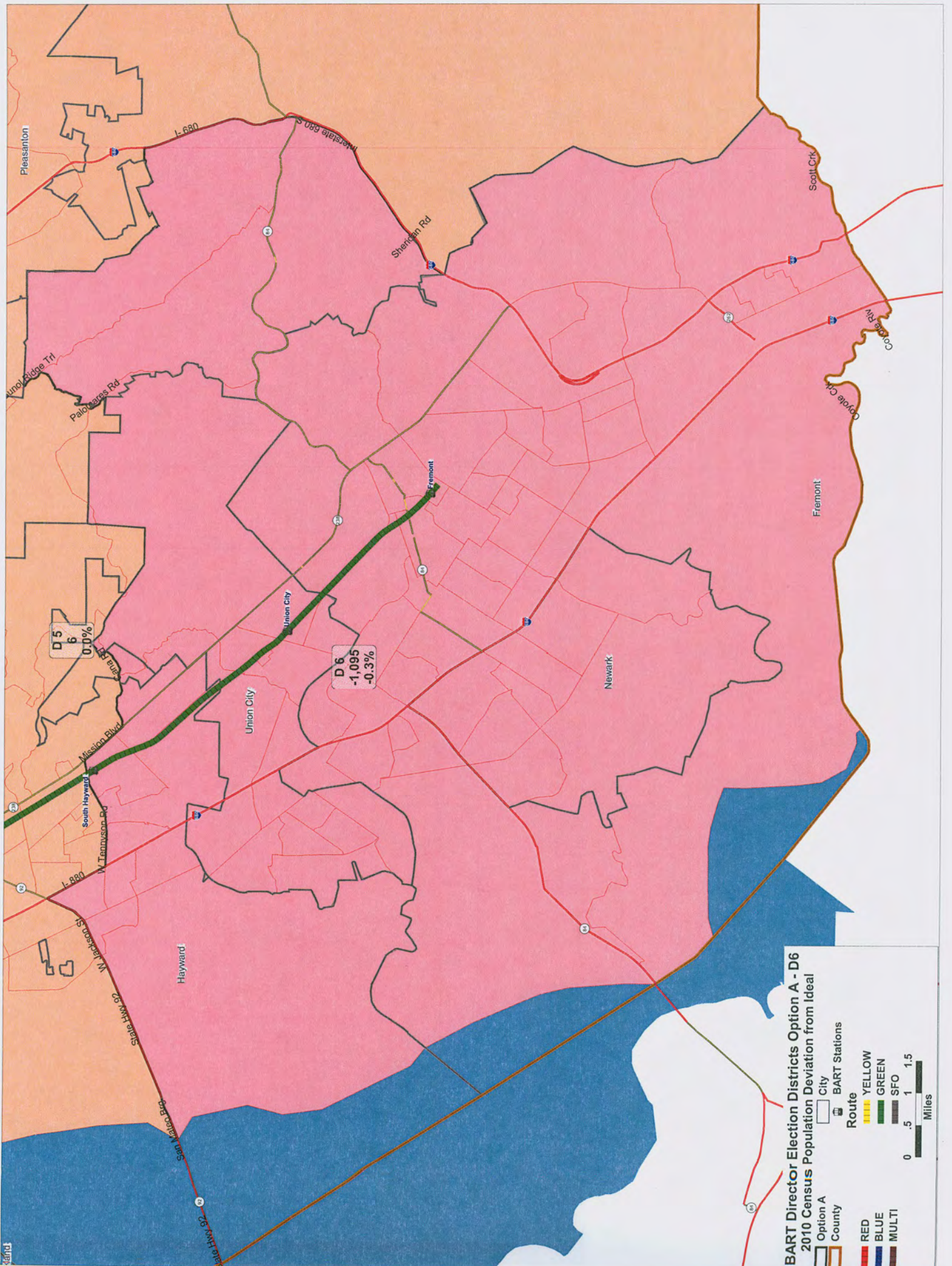
D 1
 2,099
 -0.6%

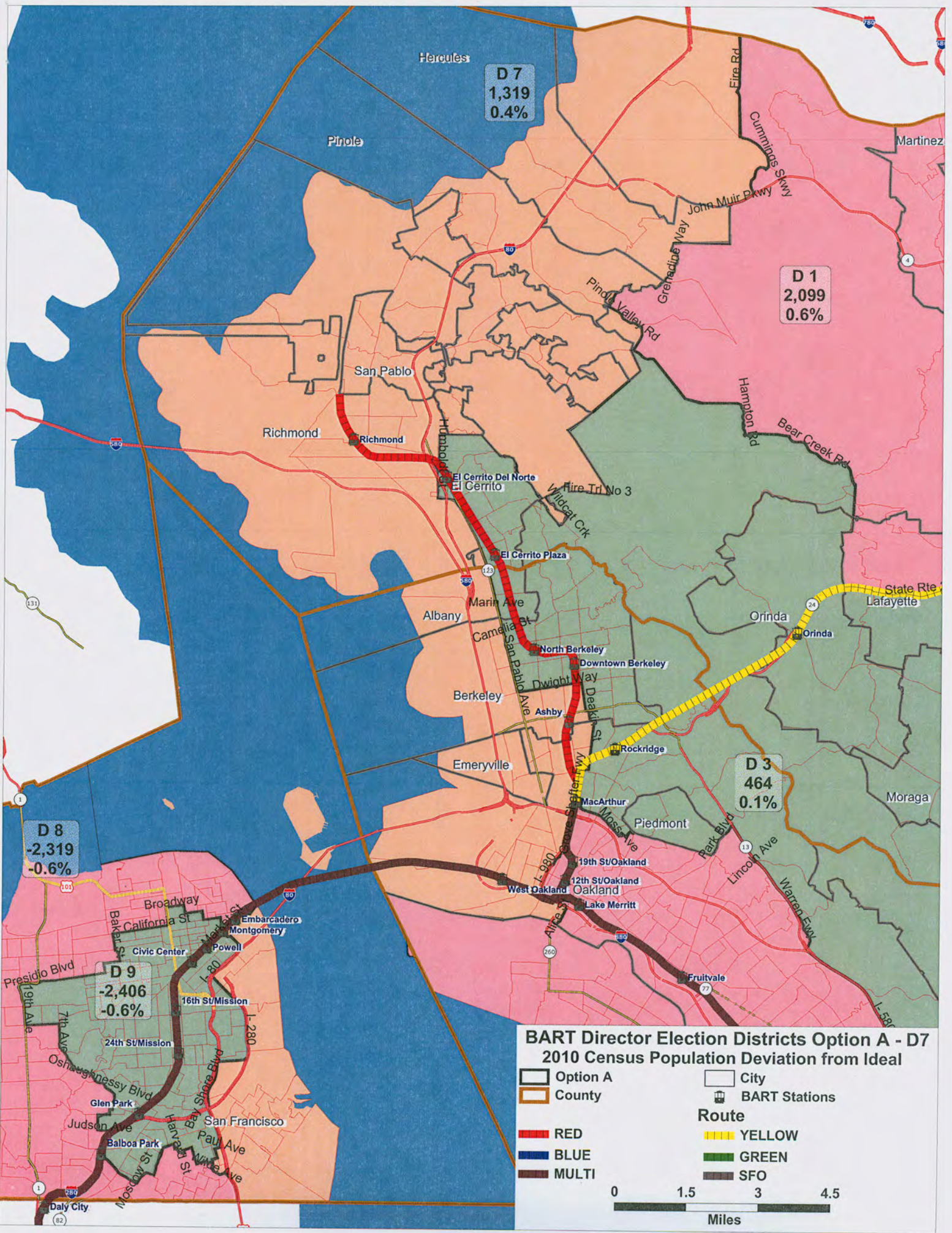
D 3
 464
 0.1%

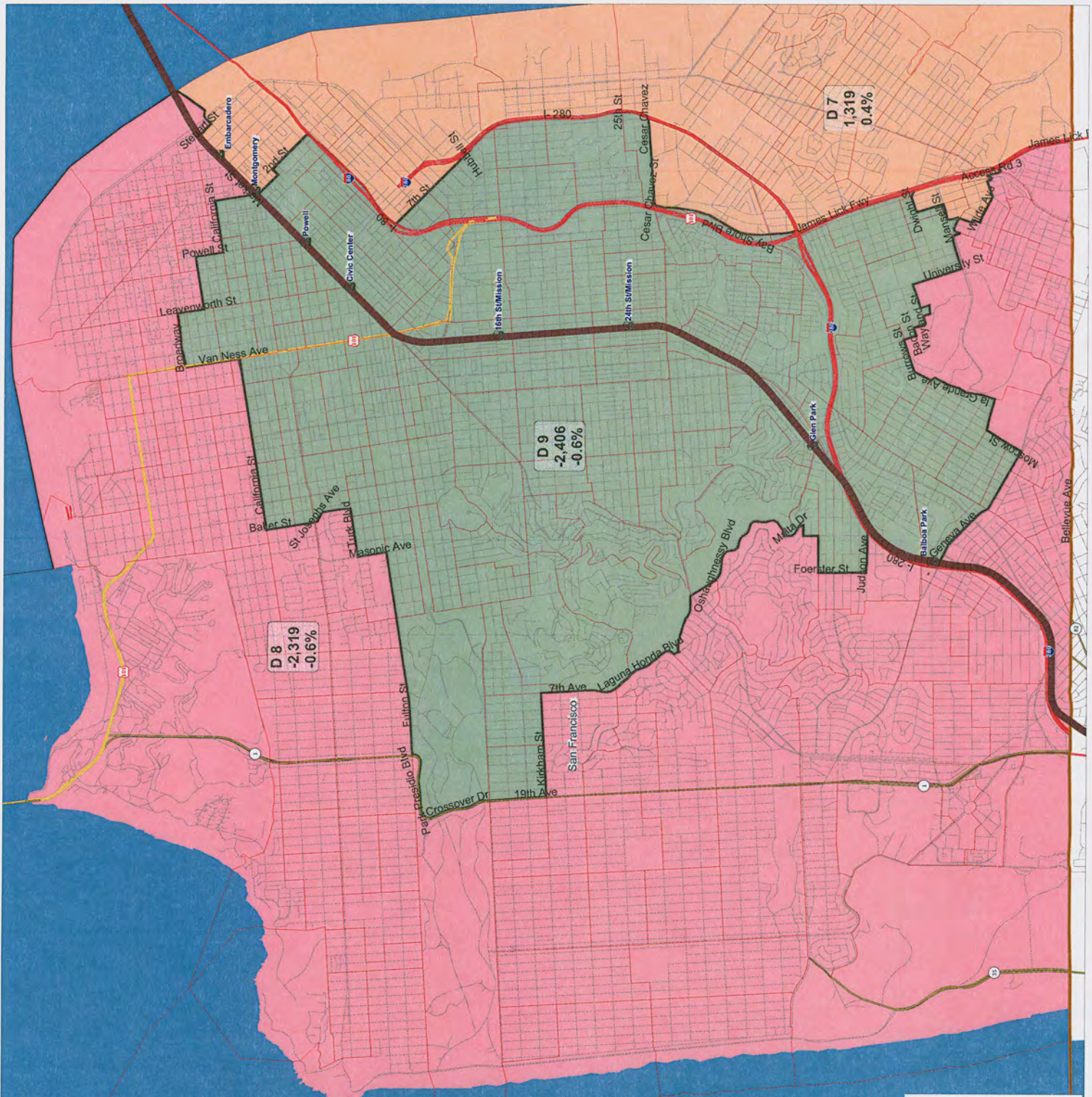
D 4
 1,643
 0.4%

D 5
 6
 0.0%

D 6
 1,095
 -0.3%







BART Director Election Districts Option A - D8
 2010 Census Population Deviation from Ideal

Option A
 County


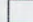








Route
 RED
 BLUE
 MULTI

City
 BART Stations

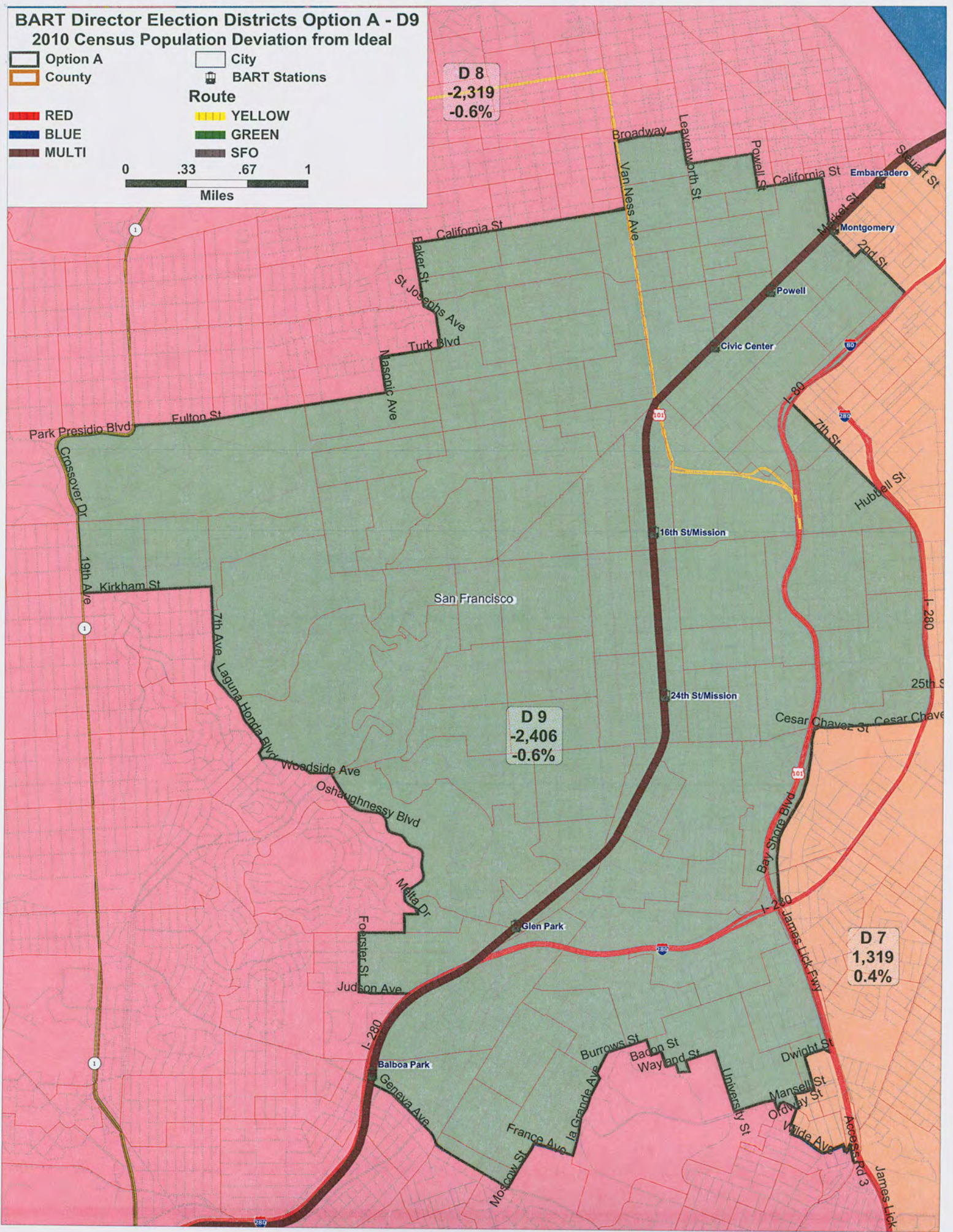
Legend
 YELLOW
 GREEN
 SFO

Miles
 0 .33 .67 1

BART Director Election Districts Option A - D9
2010 Census Population Deviation from Ideal

	Option A		City
	County		BART Stations
Route			
	RED		YELLOW
	BLUE		GREEN
	MULTI		SFO

0 .33 .67 1
Miles

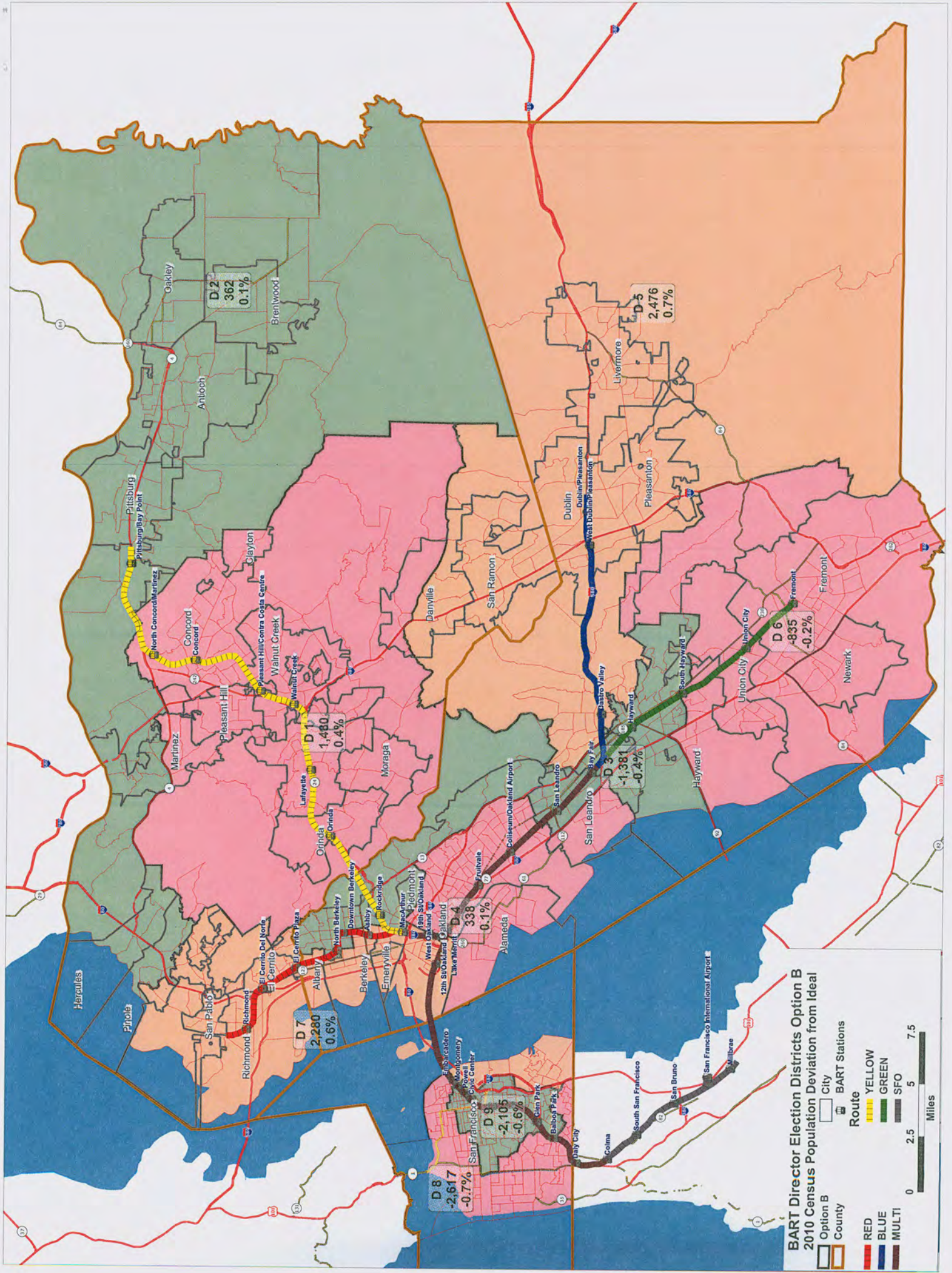


2010 Census Population by **Option A** District and City

DISTRICT	NAME	POP	Share	City Pop
1	Clayton	10897	100.0%	10897
1	Concord	48888	40.1%	122067
1	Danville	42039	100.0%	42039
1	Lafayette	8428	35.3%	23893
1	Martinez	35824	100.0%	35824
1	Pleasant Hill	33152	100.0%	33152
1	San Ramon	72148	100.0%	72148
1	Walnut Creek	64173	100.0%	64173
1	Uninc. Contra Costa	60387	37.8%	159785
2	Antioch	102372	100.0%	102372
2	Brentwood	51481	100.0%	51481
2	Concord	73179	59.9%	122067
2	Oakley	35432	100.0%	35432
2	Pittsburg	63264	100.0%	63264
2	Uninc. Contra Costa	48396	30.3%	159785
3	Albany	10818	58.4%	18539
3	Berkeley	85987	76.4%	112580
3	Oakland	66432	17.0%	390724
3	Piedmont	10667	100.0%	10667
3	San Leandro	61645	72.6%	84950
3	Uninc. Alameda	62334	44.1%	141266
3	El Cerrito	21835	92.7%	23549
3	Lafayette	15465	64.7%	23893
3	Moraga	16016	100.0%	16016
3	Orinda	17643	100.0%	17643
3	Uninc. Contra Costa	5459	3.4%	159785
4	Alameda	73812	100.0%	73812
4	Oakland	278363	71.2%	390724
4	San Leandro	23305	27.4%	84950
5	Dublin	46036	100.0%	46036
5	Hayward	98387	68.2%	144186
5	Livermore	80968	100.0%	80968
5	Pleasanton	70285	100.0%	70285
5	Uninc. Alameda	78167	55.3%	141266

2010 Census Population by **Option A** District and City

DISTRICT	NAME	POP	Share	City Pop
6	Fremont	214089	100.0%	214089
6	Hayward	45799	31.8%	144186
6	Newark	42573	100.0%	42573
6	Union City	69516	100.0%	69516
6	Uninc. Alameda	765	0.5%	141266
7	Albany	7721	41.6%	18539
7	Berkeley	26593	23.6%	112580
7	Emeryville	10080	100.0%	10080
7	Oakland	45929	11.8%	390724
7	El Cerrito	1714	7.3%	23549
7	Hercules	24060	100.0%	24060
7	Pinole	18390	100.0%	18390
7	Richmond	103701	100.0%	103701
7	San Pablo	29139	100.0%	29139
7	Uninc. Contra Costa	45543	28.5%	159785
7	San Francisco	62286	7.7%	805235
8	San Francisco	371518	46.1%	805235
9	San Francisco	371431	46.1%	805235



Option B

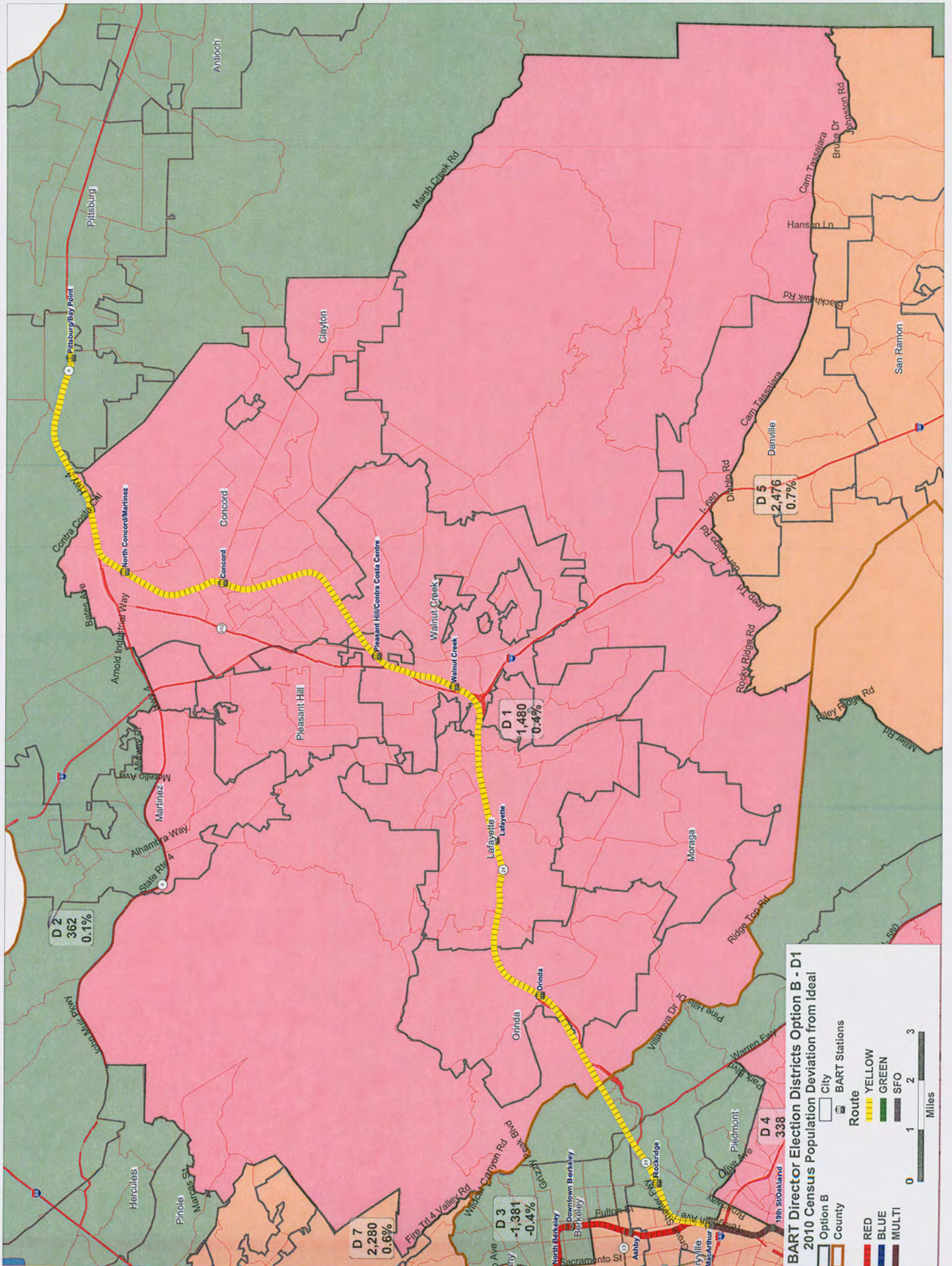
- City
- County
- BART Stations

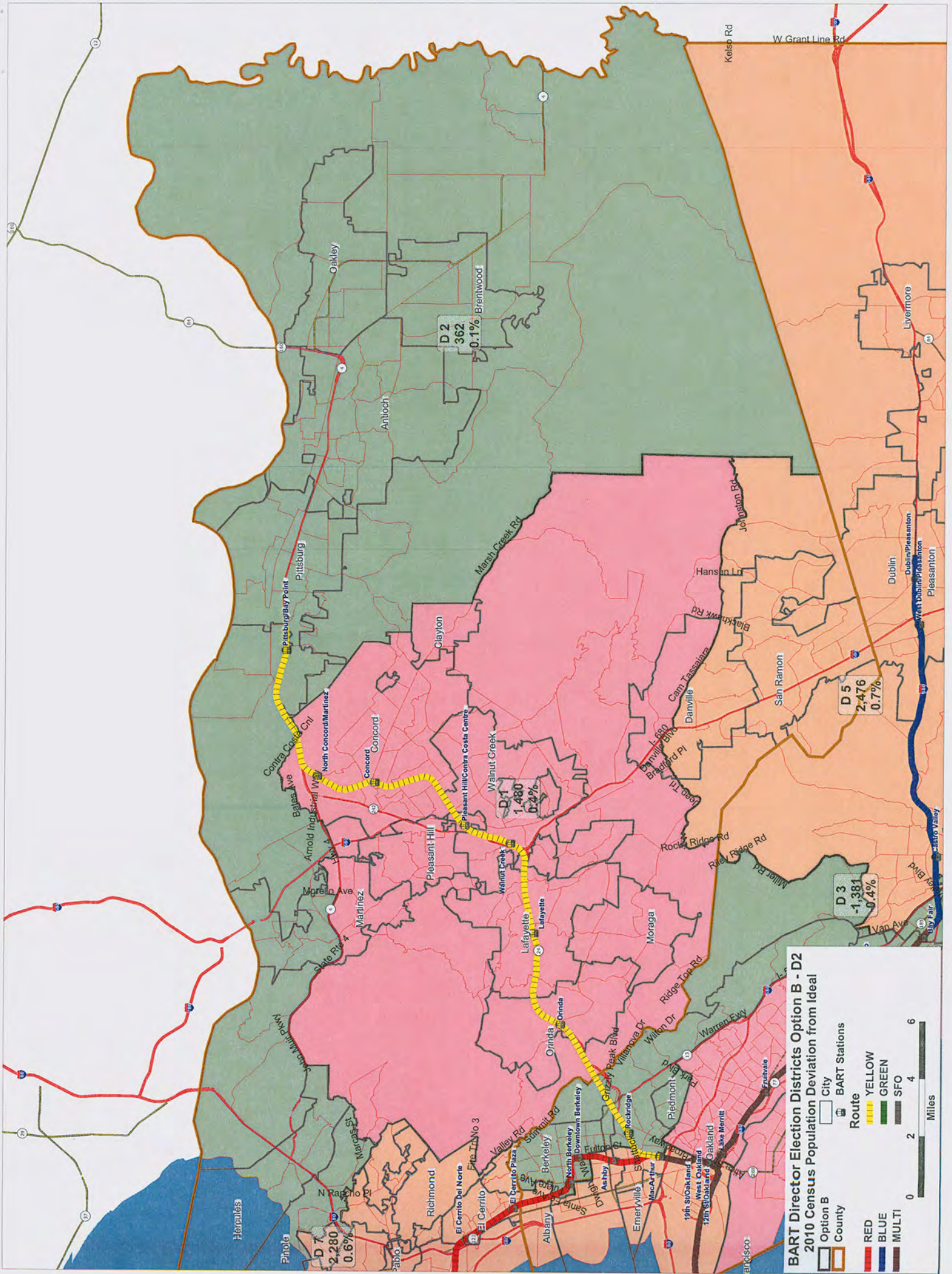
Route

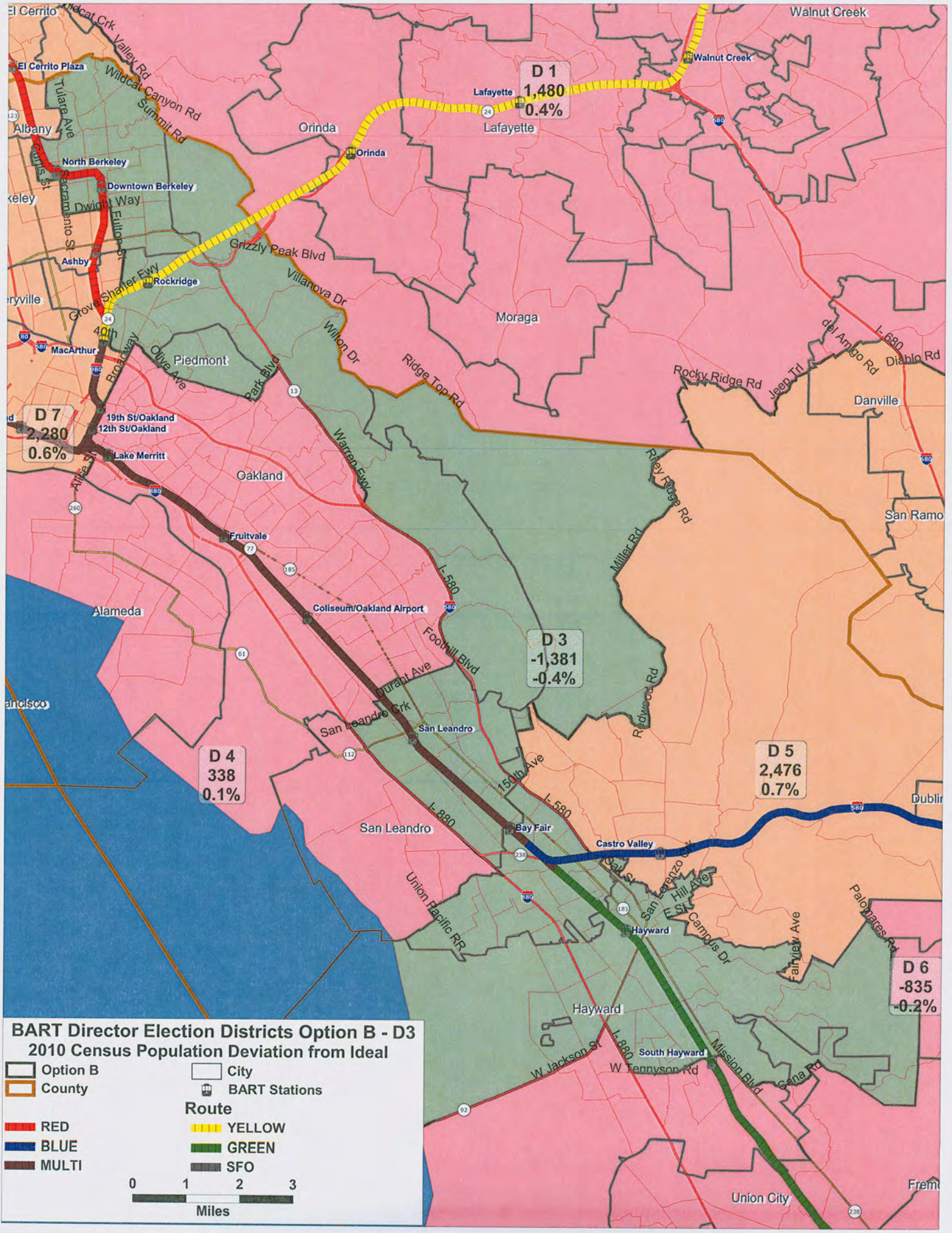
- RED
- BLUE
- MULTI
- YELLOW
- GREEN
- SFO

Miles

0 2.5 5 7.5



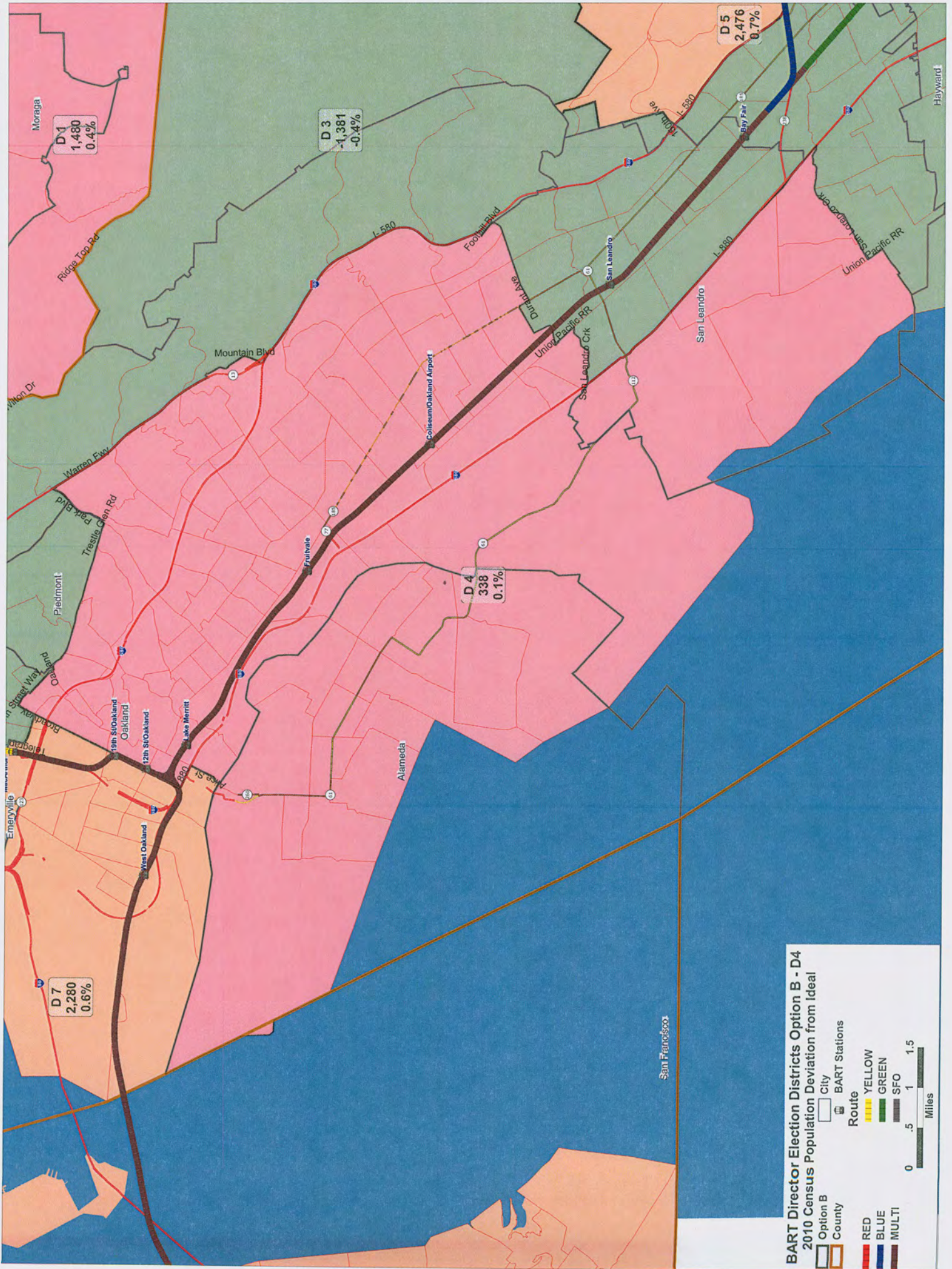




BART Director Election Districts Option B - D3
2010 Census Population Deviation from Ideal

	Option B		City
	County		BART Stations
Route			
	RED		YELLOW
	BLUE		GREEN
	MULTI		SFO

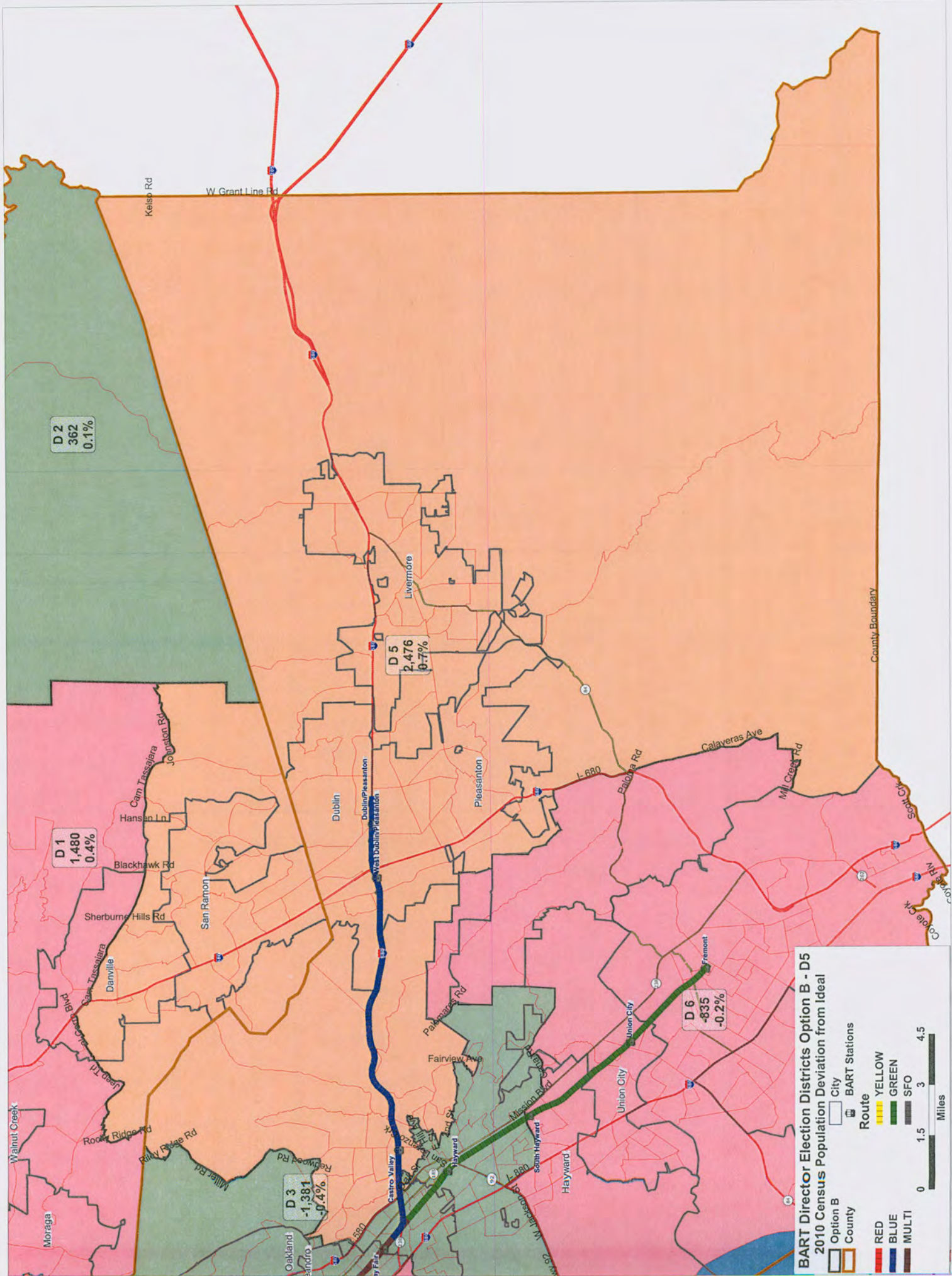
0 1 2 3
Miles



BART Director Election Districts Option B - D4
 2010 Census Population Deviation from Ideal

	Option B		City
	County		BART Stations
	RED		YELLOW
	BLUE		GREEN
	MULTI		SFO

0 0.5 1 1.5 Miles



BART Director Election Districts Option B - D5
 2010 Census Population Deviation from Ideal

Option B

- City
- County

BART Stations

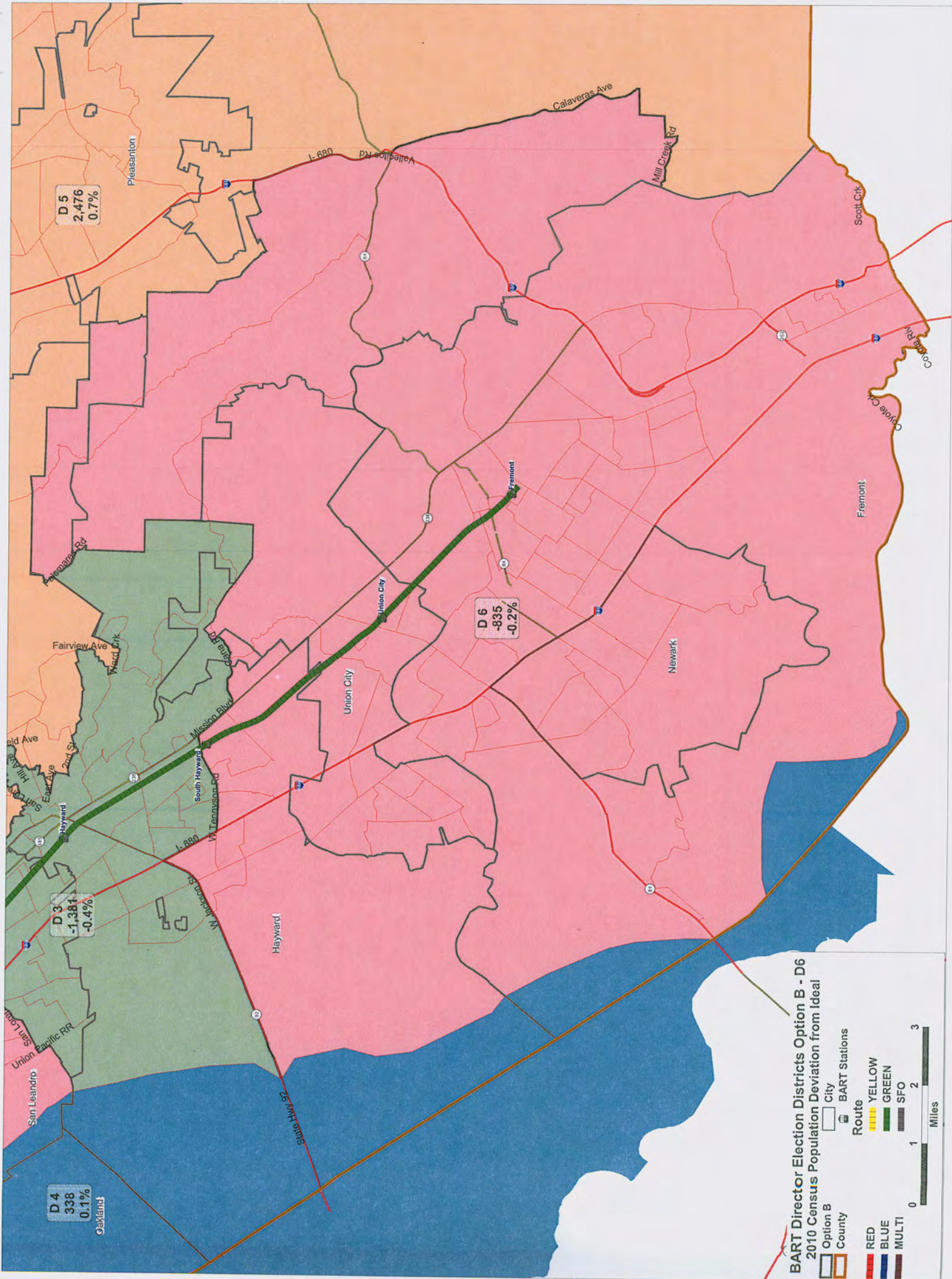
- City
- County

Route

- RED
- BLUE
- MULTI
- YELLOW
- GREEN
- SFO

Miles

0 1.5 3 4.5



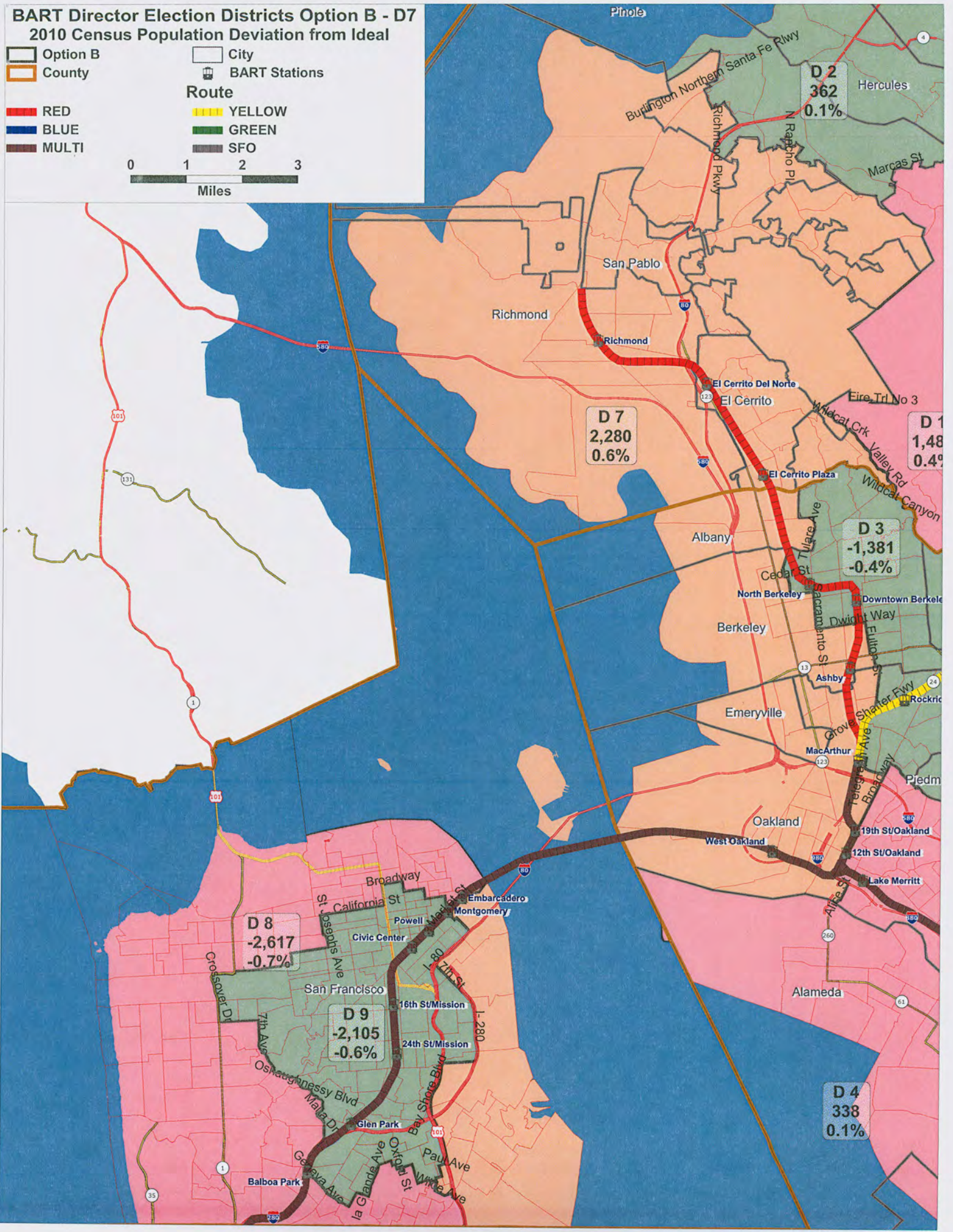
BART Director Election Districts Option B - D7

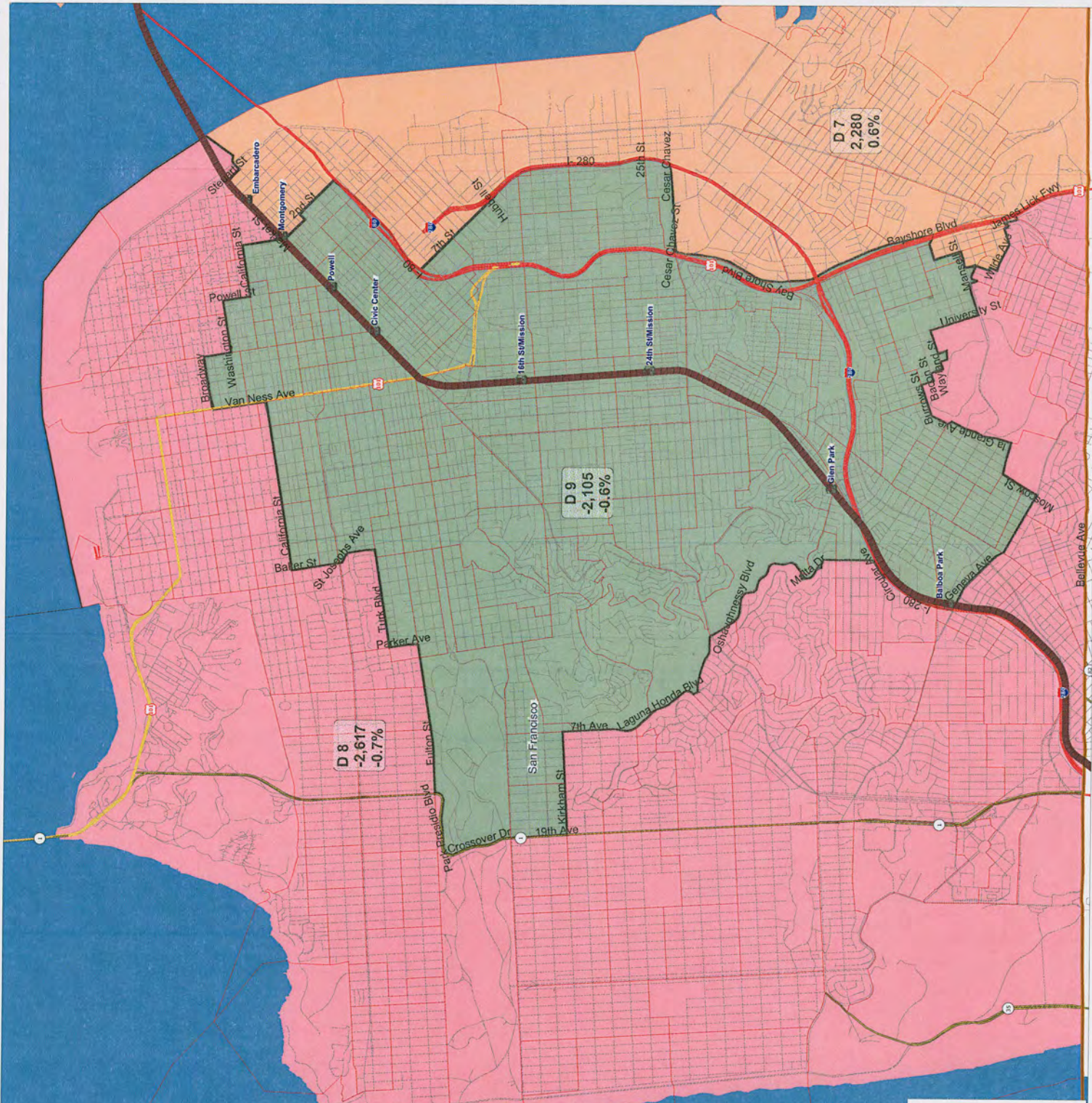
2010 Census Population Deviation from Ideal

Option B
 County
 City
 BART Stations
Route
 RED
 BLUE
 YELLOW
 GREEN
 SFO
 MULTI

0 1 2 3

 Miles





D 7
2,280
0.6%

D 9
-2,105
-0.6%

D 8
-2,617
-0.7%

BART Director Election Districts Option B - D8
 2010 Census Population Deviation from Ideal

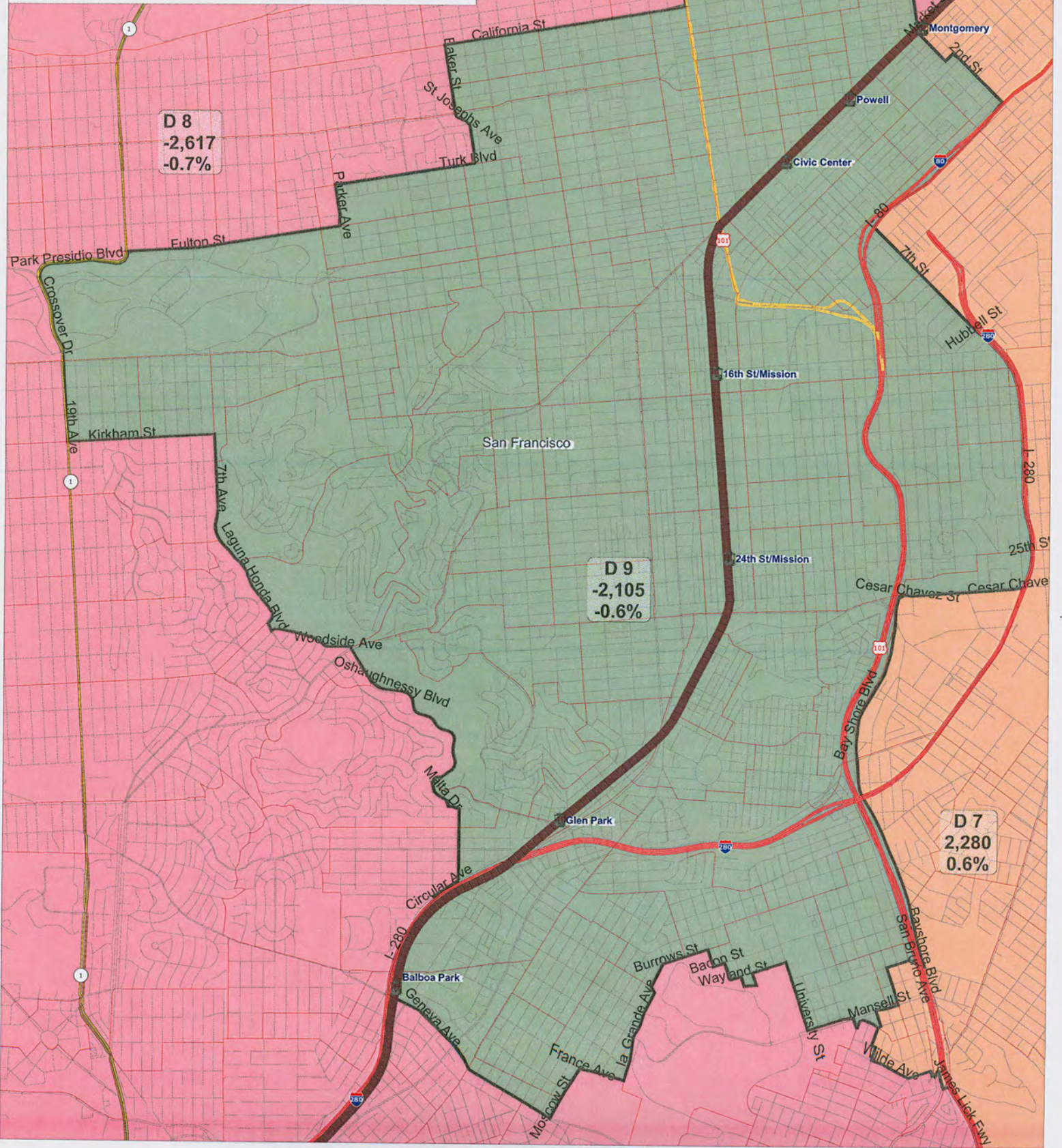
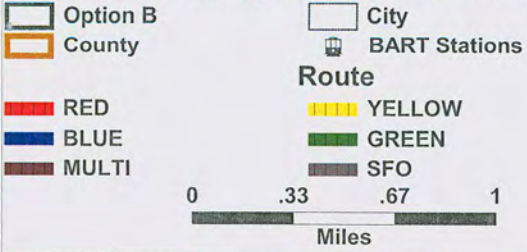
	City
	County
	RED
	BLUE
	MULTI
	YELLOW
	GREEN
	SFO
	67
	1

Route

BART Stations

Miles
 0 .33 .67 1

BART Director Election Districts Option B - D9 2010 Census Population Deviation from Ideal



2010 Census Population by **Option B** District and City

DISTRICT	NAME	POP	Share	City Pop
1	Clayton	10897	100.0%	10897
1	Concord	122067	100.0%	122067
1	Danville	13306	31.7%	42039
1	Lafayette	23893	100.0%	23893
1	Martinez	19370	54.1%	35824
1	Moraga	16016	100.0%	16016
1	Orinda	17643	100.0%	17643
1	Pleasant Hill	33152	100.0%	33152
1	Walnut Creek	64173	100.0%	64173
1	Uninc. Contra Costa	54800	34.3%	159785
2	Antioch	102372	100.0%	102372
2	Brentwood	51481	100.0%	51481
2	Hercules	24060	100.0%	24060
2	Martinez	16454	45.9%	35824
2	Oakley	35432	100.0%	35432
2	Pinole	18390	100.0%	18390
2	Pittsburg	63264	100.0%	63264
2	Uninc. Contra Costa	62746	39.3%	159785
3	Berkeley	79071	70.2%	112580
3	Hayward	98377	68.2%	144186
3	Oakland	63159	16.2%	390724
3	Piedmont	10667	100.0%	10667
3	San Leandro	55667	65.5%	84950
3	Uninc. Alameda	65515	46.4%	141266
4	Alameda	73812	100.0%	73812
4	Oakland	271080	69.4%	390724
4	San Leandro	29283	34.5%	84950
5	Dublin	46036	100.0%	46036
5	Livermore	80968	100.0%	80968
5	Pleasanton	70285	100.0%	70285
5	Uninc. Alameda	74736	52.9%	141266
5	Danville	28733	68.3%	42039
5	San Ramon	72148	100.0%	72148
5	Uninc. Contra Costa	3407	2.1%	159785

2010 Census Population by **Option B** District and City

DISTRICT	NAME	POP	Share	City Pop
6	Fremont	214089	100.0%	214089
6	Hayward	45809	31.8%	144186
6	Newark	42573	100.0%	42573
6	Union City	69516	100.0%	69516
6	Uninc. Alameda	1015	0.7%	141266
7	Albany	18539	100.0%	18539
7	Berkeley	33509	29.8%	112580
7	Emeryville	10080	100.0%	10080
7	Oakland	56485	14.5%	390724
7	El Cerrito	23549	100.0%	23549
7	Richmond	103701	100.0%	103701
7	San Pablo	29139	100.0%	29139
7	Uninc. Contra Costa	38832	24.3%	159785
7	San Francisco	62283	7.7%	805235
8	San Francisco	371220	46.1%	805235
9	San Francisco	371732	46.2%	805235